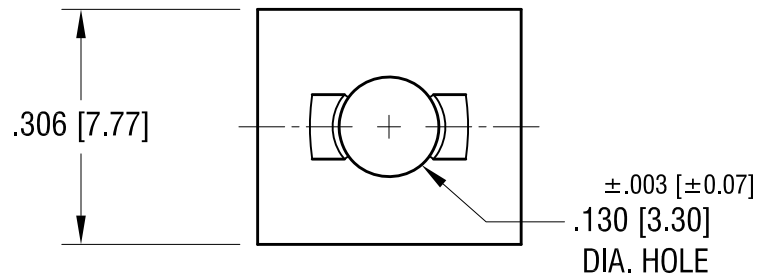
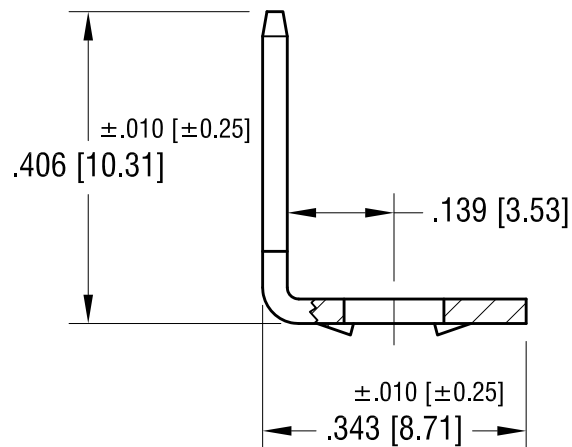
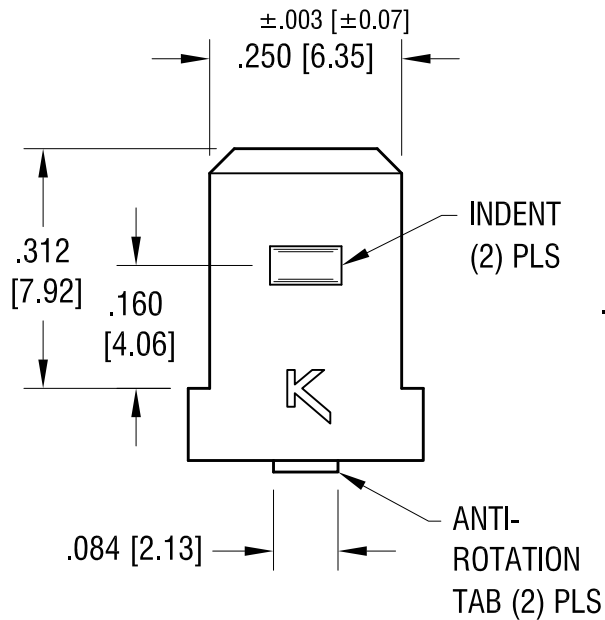
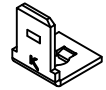


ACTUAL SIZE



|         |                          |      |
|---------|--------------------------|------|
| 8.21.12 | CHANGE AS PER ECN 12-110 | B    |
| 9.4.03  | CHANGE AS PER ECN 03-063 | A    |
| DATE    | DESCRIPTION              | REV. |

| KEYSTONE ELECTRONICS CORP.                                     |                 |        |         |
|----------------------------------------------------------------|-----------------|--------|---------|
| www.keyelco.com • NEW HYDE PARK, NY 11040 • Tel (516) 328-7500 |                 |        |         |
| PART NAME                                                      |                 |        |         |
| .250 QUICK-FIT TERMINAL                                        |                 |        |         |
| MATERIAL                                                       |                 |        |         |
| .032 [0.81] TH'K BRASS                                         |                 |        |         |
| FINISH                                                         |                 | DRN BY | DATE    |
| BRIGHT BRASS                                                   |                 | BOONE  | 4.30.82 |
|                                                                |                 | APP'D  | SCALE   |
|                                                                |                 | LN     | 4X      |
| TOLERANCES                                                     | INCH [MM]       | CODE   | DWG NO. |
| DECIMAL                                                        | ± .005 [± 0.13] | C      | 1256    |
| ANGULAR                                                        | ± 1°            |        |         |
| UNLESS OTHERWISE SPECIFIED                                     |                 |        |         |

# Mouser Electronics

Authorized Distributor

Click to View Pricing, Inventory, Delivery & Lifecycle Information:

[Keystone Electronics:](#)

[1256](#)