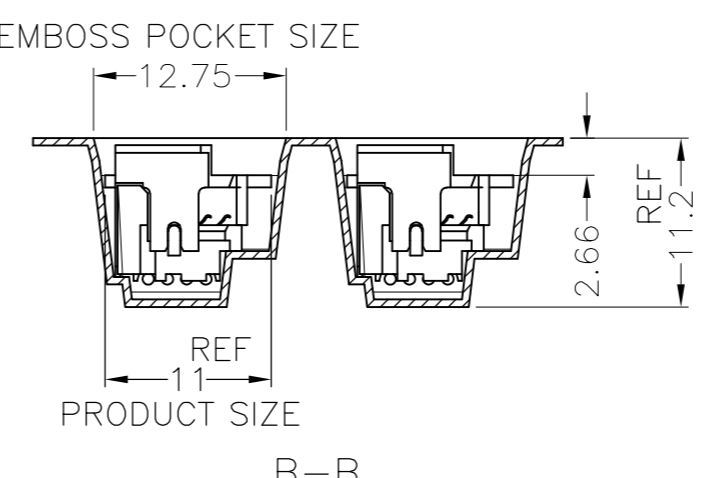
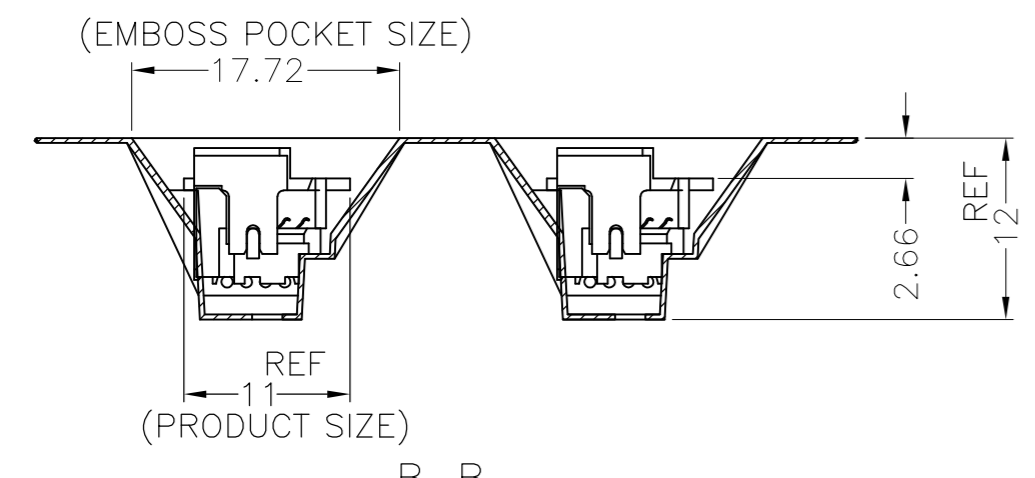
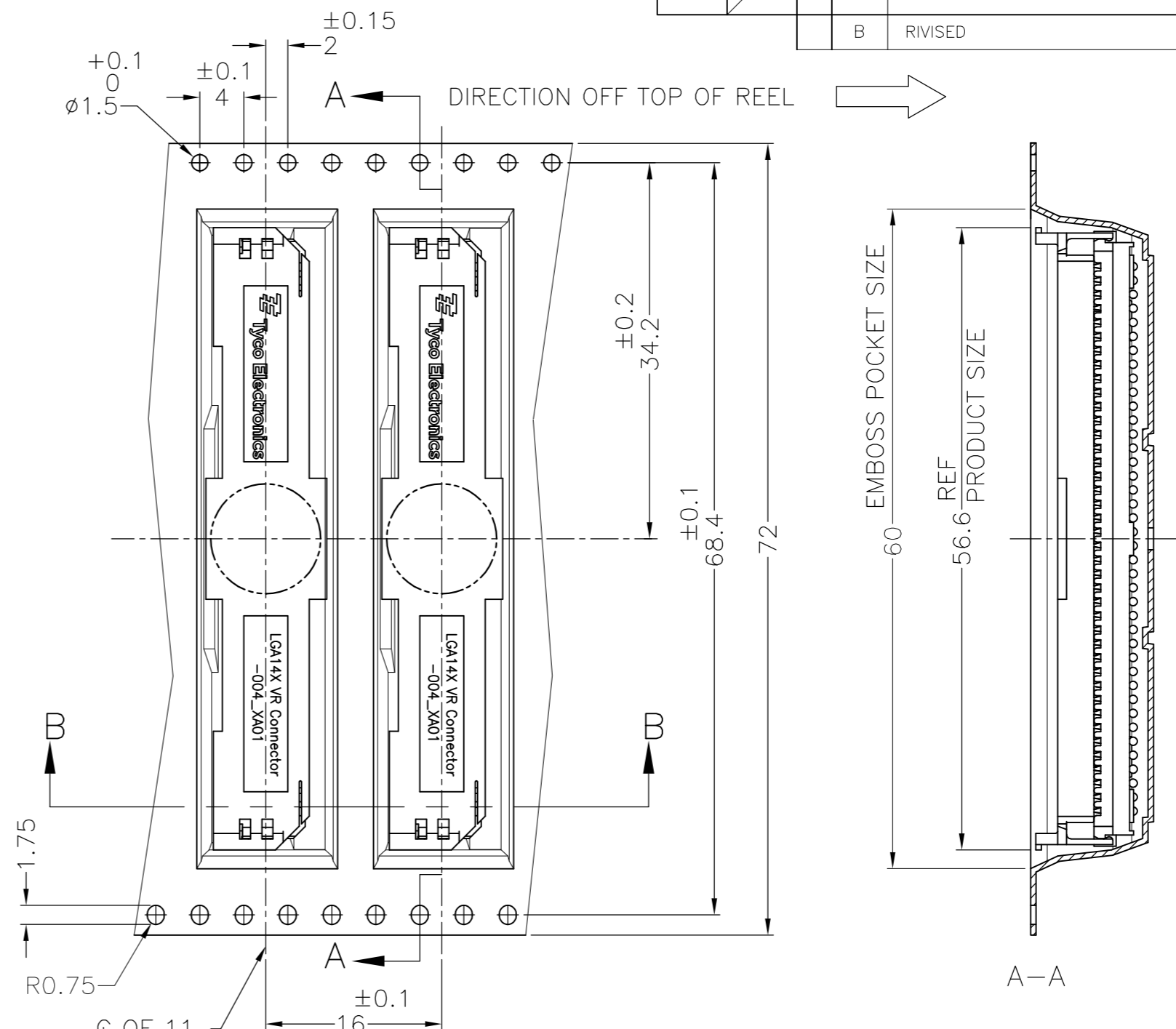
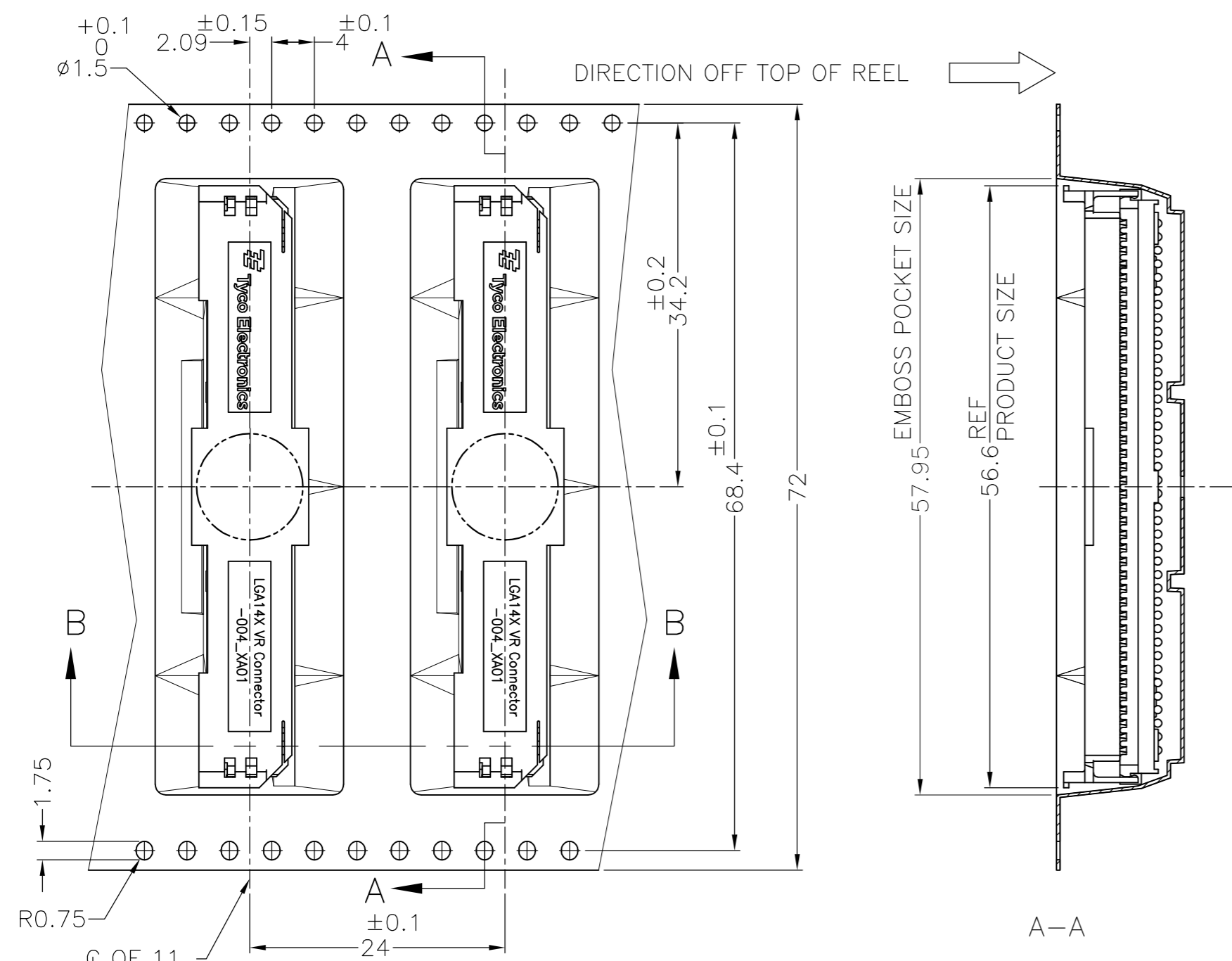
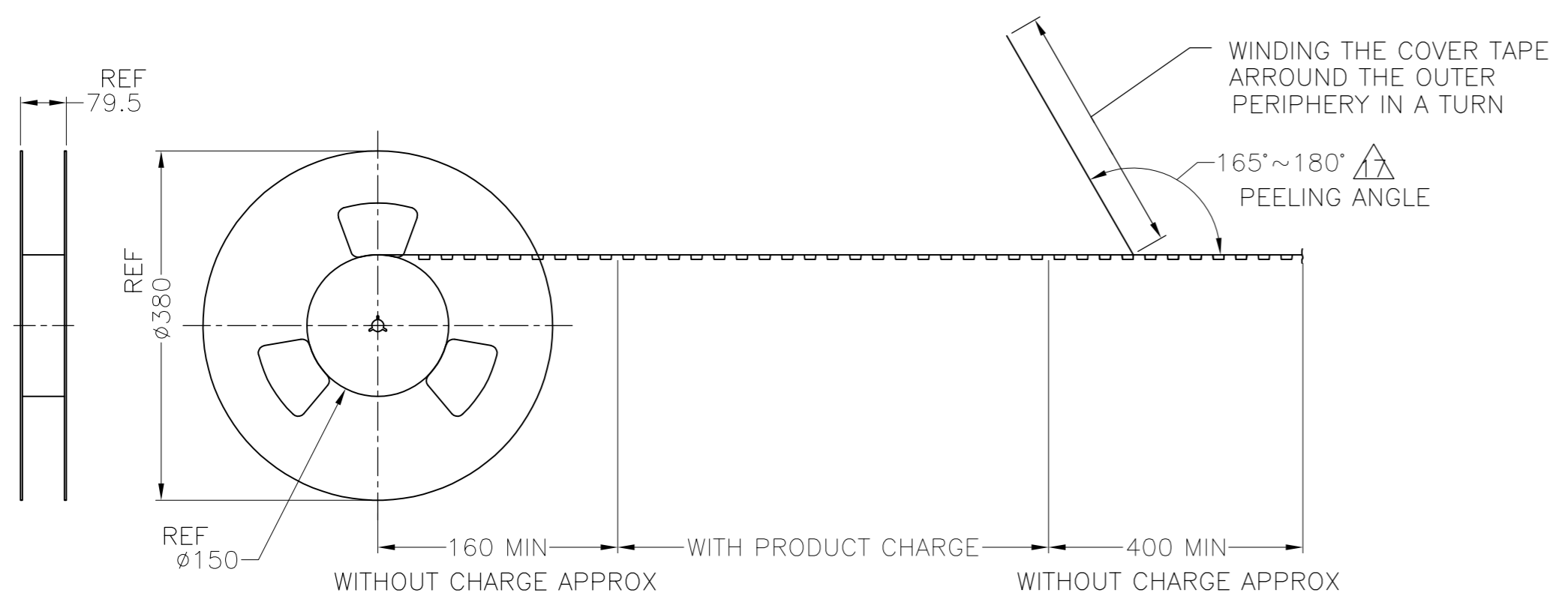


LOC		DIST		REVISIONS			
P	LTR	DESCRIPTION	DATE	DWN	APVD		
B		REVISED	10NOV11	H.K	T.N		



1761122-1,-2 AS SHOWN

1761122-3 AS SHOWN

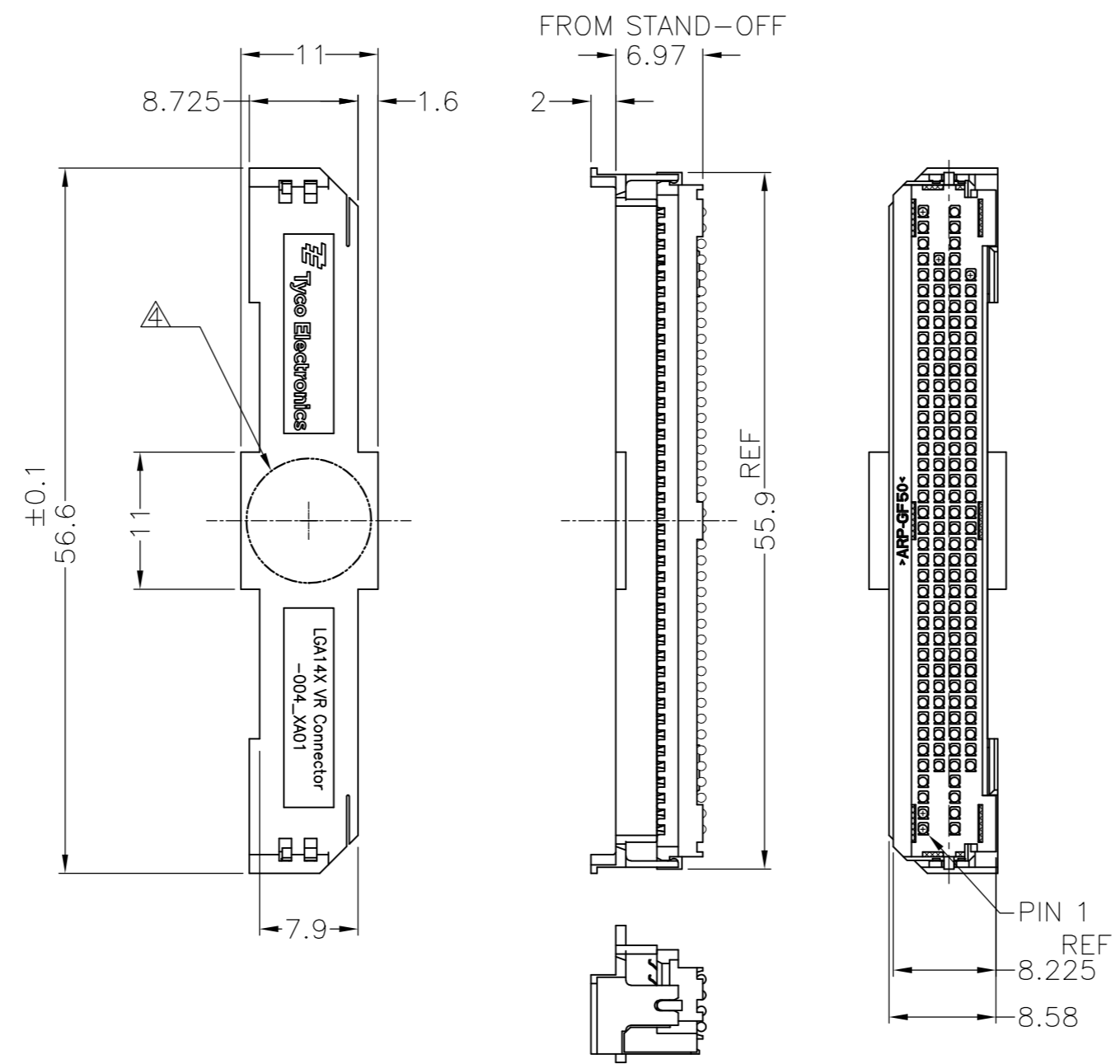


LEAD-FREE	1761122-3	450 / REEL
EUTECTIC 63Sn/37Pb	1761122-2	300 / REEL
LEAD-FREE	1761122-1	300 / REEL
SOLDER BALL	PART NUMBER	QUANTITY

THIS DRAWING IS A CONTROLLED DOCUMENT.		DWN T.TOKUNAGA 09MAR2009	TE TE Connectivity	
DIMENSIONS: mm		CHK H.TAGUCHI 09MAR2009		
TOLERANCES UNLESS OTHERWISE SPECIFIED:		APVD T.NAKASHIMA 09MAR2009	NAME	
6 PLG ± ±0.3		PRODUCT SPEC		SMT LGA SOCKET 145 POSITION ASSEMBLY
1 PLG ± ±1°		108-78431		
2 PLG ± ±1°		APPLICATION SPEC		SIZE
3 PLG ± ±		114-5440		CAGE CODE
4 PLG ± ±		WEIGHT 2.8g		DRAWING NO
MATERIAL		CUSTOMER DRAWING		RESTRICTED TO
FINISH		SCALE NTS		SHEET 1 of 4
		C=1761122		REV B

THIS DRAWING IS UNPUBLISHED. RELEASED FOR PUBLICATION - 20 .
 © COPYRIGHT 20 By Tyco Electronics JAPAN G.K. ALL RIGHTS RESERVED.

LOC		DIST		REVISIONS			
P	LTR	DESCRIPTION	DATE	DWN	APVD		
-	-	SEE SHEET 1	-	-	-		

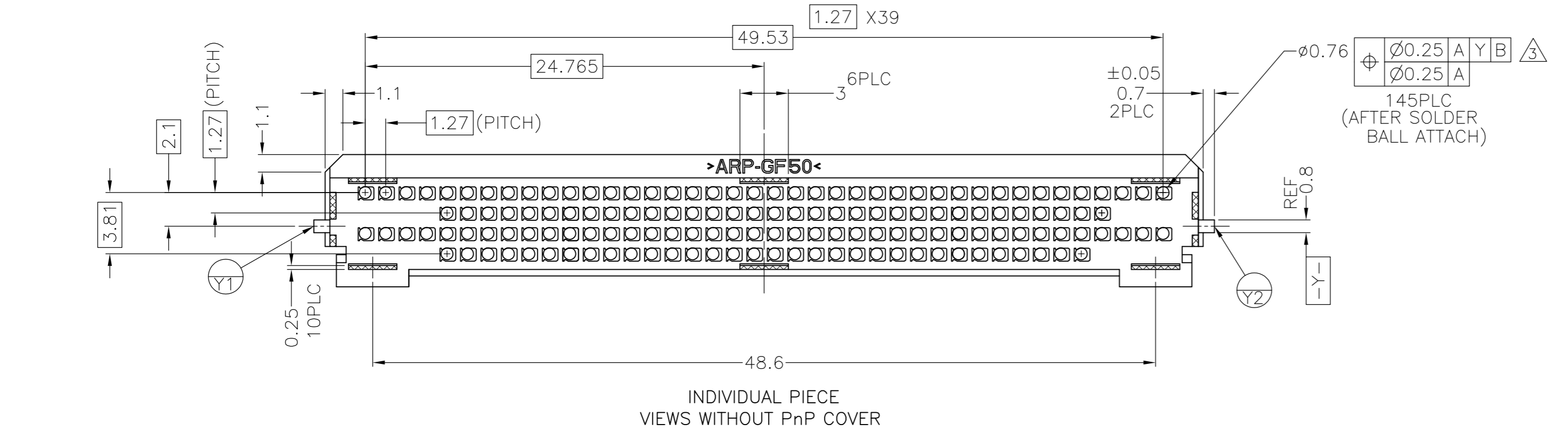
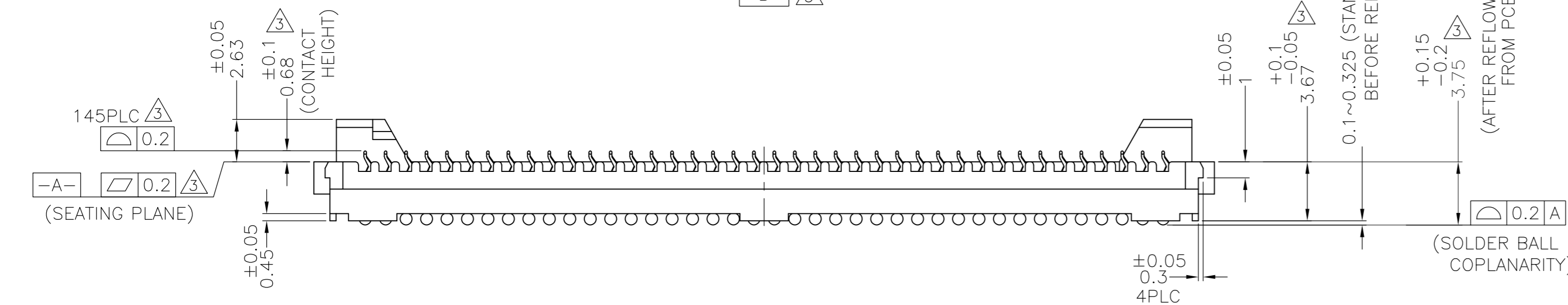
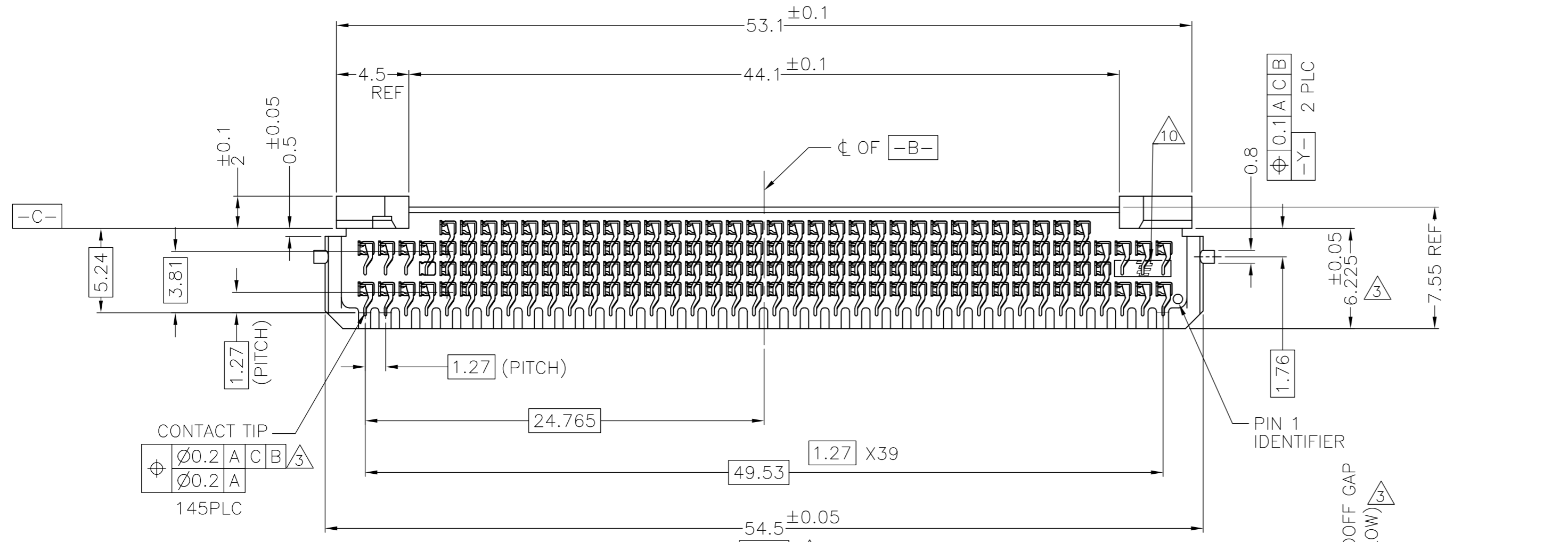


INDIVIDUAL PIECE
VIEWS WITH PnP COVER

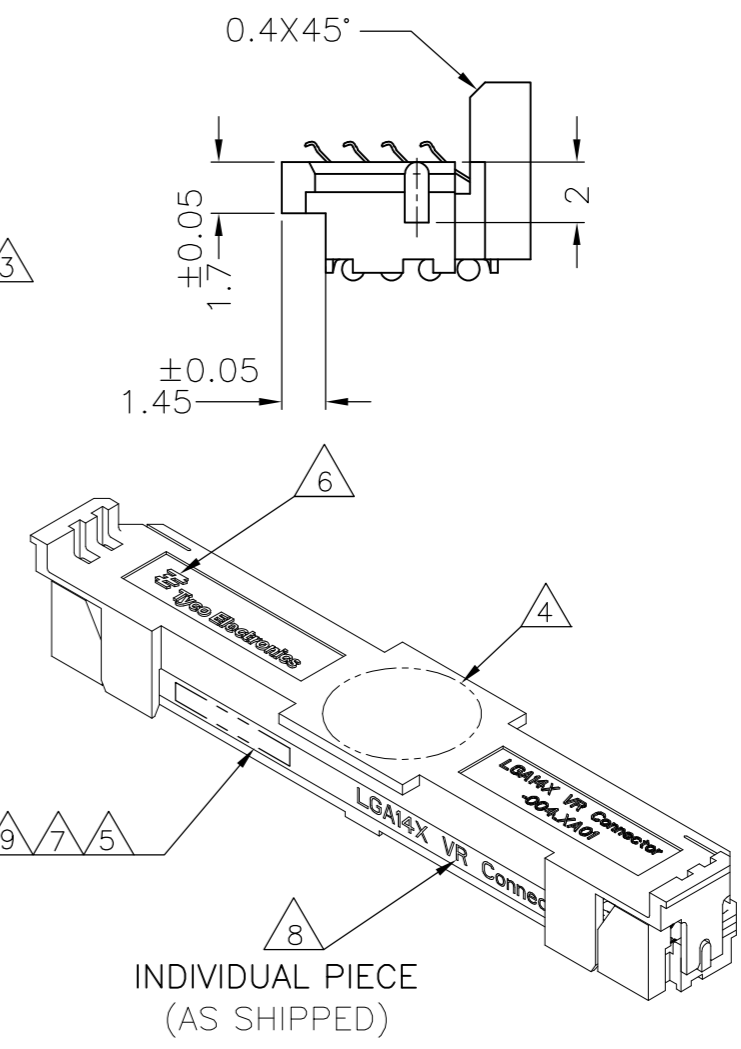
THIS DRAWING IS A CONTROLLED DOCUMENT.		DWN				
DIMENSIONS: mm		CHK				
TOLERANCES UNLESS OTHERWISE SPECIFIED: 0 PLC ± ±0.3 1 PLC ± ±1° 2 PLC ± ±1° 3 PLC ± ±1° 4 PLC ± ±1° ANGLES ±		APVD				
MATERIAL		PRODUCT SPEC				
FINISH		APPLICATION SPEC	NAME SMT LGA SOCKET 145 POSITION ASSEMBLY			
WEIGHT		WEIGHT	SIZE	CAGE CODE	DRAWING NO	RESTRICTED TO
CUSTOMER DRAWING		SCALE	A2	00779	C=1761122	-
		SHEET	NTS	2	of 4	REV B

THIS DRAWING IS UNPUBLISHED. RELEASED FOR PUBLICATION - 20 .
 © COPYRIGHT 20 By Tyco Electronics JAPAN G.K. ALL RIGHTS RESERVED.

LOC	DIST	REVISIONS					
		P	LTR	DESCRIPTION	DATE	DWN	APVD
J		-	-	SEE SHEET 1	-	-	-



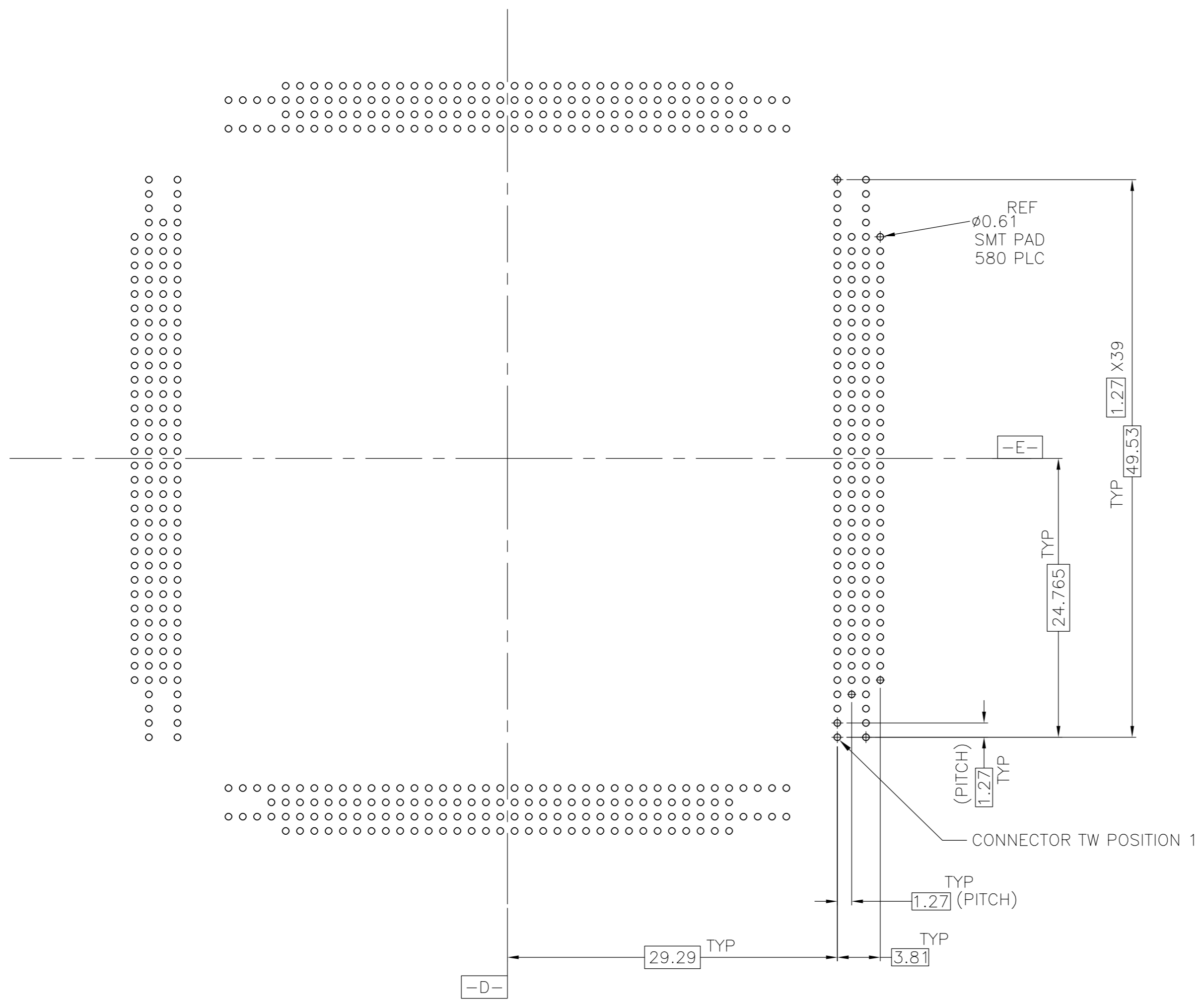
- 1 MATERIAL:
HOUSING : HIGH TEMPERATURE THERMOPLASTIC, UL 94V-0
CONTACT : COPPER ALLOY
SOLDER BALLS : SEE TABLE
- 2 FINISH:
CONTACT : 0.76µm MIN GOLD OVER 1.27µm MIN NICKEL IN CONTACT MATING ZONE
- 3 CTF DIMENSIONS
- 4 AREA TO SUPPORT THE VACUUM TYPE PICK AND PLACE HIGH VOLUME MANUFACTURING SYSTEM
- 5 LOT NUMBER INDICATED IN THIS AREA.
- 6 TE LOGO INDICATED IN THIS AREA.
- 7 SOLDER BALL TYPE INDICATED IN THIS AREA
"LF" TEXT FOR LEAD FREE SOLDER
NO TEXT FOR TIN-LEAD SOLDER.
- 8 PRODUCT ID INDICATED IN THIS AREA
- 9 INTEL CONCEPT BOM NUMBER INDICATED IN THIS AREA



THIS DRAWING IS A CONTROLLED DOCUMENT.		DWN	TE Connectivity			
DIMENSIONS: mm		CHK				NAME
TOLERANCES UNLESS OTHERWISE SPECIFIED:		APVD	SMT LGA SOCKET			
6 PLC ± ±0.13 1 PLC ± ±1° 2 PLC ± ±1° 3 PLC ± ±1° 4 PLC ± ±1° ANGLES ±		PRODUCT SPEC	145 POSITION ASSEMBLY			
MATERIAL		APPLICATION SPEC	SIZE	CAGE CODE	DRAWING NO	RESTRICTED TO
FINISH		WEIGHT	A2	00779	C=1761122	-
		CUSTOMER DRAWING	SCALE	SHEET	REV	
			4:1	3 of 4	B	

THIS DRAWING IS UNPUBLISHED. RELEASED FOR PUBLICATION - 20 .
 © COPYRIGHT 20 By Tyco Electronics JAPAN G.K. ALL RIGHTS RESERVED.

LOC		DIST		REVISIONS			
P	LTR	DESCRIPTION	DATE	DWN	APVD		
-	-	SEE SHEET 1	-	-	-		



VR BOARD LAYOUT (REFERENCE)
 QUAD ASSEMBLY
 SHOWN FROM TOP

FOR GENERAL BOARD DESIGN, PLEASE REFER TO THE THERMAL AND MECHANICAL DESIGN GUIDELINES(TMDG) PROVIDED BY INTEL CORPORATION

THIS DRAWING IS A CONTROLLED DOCUMENT.		DWN		
DIMENSIONS: mm		CHK		
TOLERANCES UNLESS OTHERWISE SPECIFIED:		APVD	NAME	
0 PLC ± ±0.13 1 PLC ± ±1° 2 PLC ± ±1° 3 PLC ± ±1° 4 PLC ± ±1° ANGLES ±		PRODUCT SPEC	SMT LGA SOCKET 145 POSITION ASSEMBLY	
MATERIAL		APPLICATION SPEC	SIZE	CAGE CODE
FINISH		WEIGHT	A2	00779
		CUSTOMER DRAWING	DRAWING NO	RESTRICTED TO
		SCALE	C=1761122	-
		NTS	SHEET	REV
		4 OF 4	B	

1761122

Mouser Electronics

Authorized Distributor

Click to View Pricing, Inventory, Delivery & Lifecycle Information:

[TE Connectivity:](#)

[1761122-2](#)