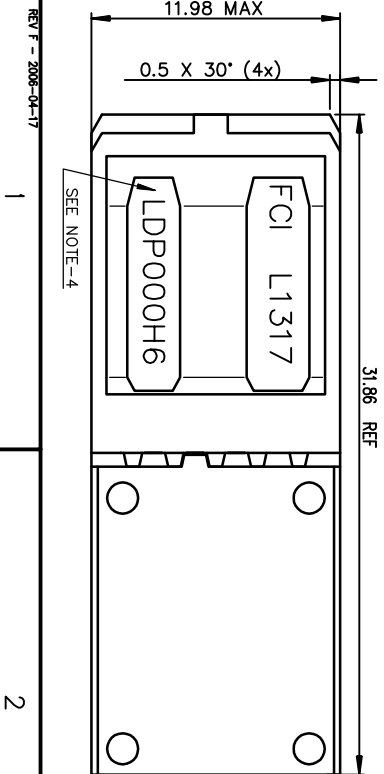




- NOTE-1: NORMINATIVE REF = IEC-61076-4-104
 NOTE-2: ONE CENTER PEG FOR HOLD DOWN FORCE
 NOTE-3: CODING RECESS FOR 8MM EXTENDED KEYS
 NOTE-4: PRODUCT MARKING = PRODUCT NUMBER + BATCH CODE + FCI
 FOR 1 MODULE SIZE/END OF PART NUMBER ONLY
 NOTE-6: CENTRAL WALL WITH END REAR SUPPORT
 NOTE-7: PACKAGING IN TRAY + COVER
 IF SUFFIX "P" IS ADDED IN P/N PACKAGING IS IN TRAYS
 BUT CONNECTOR MARKING IS WITHOUT "P"
 EXAMPLE: HM1XXXXXXXXXXH6P, MARKED HM1XXXXXXXXXXH6

GENERAL CHARACTERISTICS AND ROHS INFORMATIONS:
 SEE PRODUCT SPECIFICATION GS-12-445



rev	ech no	dr	date
G	LS06-0097	LSO	2006/07/12
H	LS07-0184	MLE	2007/07/25
J	DC09-0359	Cenh	2009/11/18
K	DG10-0231	Cenh	2010/06/18
L	DG-010291	Qndf	2012/02/14

www.fciconnect.com			surface		tolerance std		projection		mm	
			ISO 1302		ISO 406 ISO 1101					
			TOLERANCES UNLESS OTHERWISE SPECIFIED							
Dr	CHAMPION	1994/04/05	ANGULAR		±0.1		size		Scale	
Eng	De-Feng Qin	2012/02/14	LINEAR		±0.1		A3		4:1	
Chr	Flornie Zeng	2012/02/14	0.0x ± 2°		0.0xx		ECN			
Appr	PM Zheng	2012/02/14	Product family		±0.1		METRAL		Spec ref -	
METRAL RA HEADER WB			0		C-8626-0150		Rev.			
CONVERGED 4x6 CTS-PF-PUSH PEG			g		CUSTOMER		sheet 1 of 2		L	
FCI			catalog no		-					

TIN LEAD PART NUMBER

PART NUMBER / CONTACT LOADING										
DIM-P ±0.10				P/N AND PERFORMANCE LEVEL				SP. N°		
ROW-A	ROW-B	ROW-C	ROW-D							
5.00	5.00	5.00	5.00		HM1L41ADP000H6P					
5.75	5.75	5.75	5.75		HM1L41LDP000H6P					
6.50	6.50	6.50	6.50		HM1L41BDP000H6P					
6.50	5.00	5.00	5.00		HM1L41BDP000H6P					
6.50	5.75	5.75	6.50		HM1L41IDP000H6P					
5.00	5.00	6.50	5.00		HM1L41ZDP110H6P					110
5.00	5.75	6.50	5.00		HM1L41ZDP430H6P					430
5.00	5.75	5.00	5.00		HM1L41ZDP448H6P					448
5.75	5.00	5.00	5.00		HM1L41ZDP009H6P					009
5.75	6.50	5.75	5.00		HM1L41ZDP424H6P					424
6.50	5.75	6.50	5.75		HM1L41ZDP037H6P					037
6.50	5.75	5.00	5.75		HM1L41ZDP102H6P					102
6.50	6.50	6.50	5.75		HM1L41ZDP135H6P					135
6.50	8.00	6.50	5.75		HM1L41ZDP329H6P					329
6.50	5.75	5.75	5.75		HM1L41ZDP369H6P					369

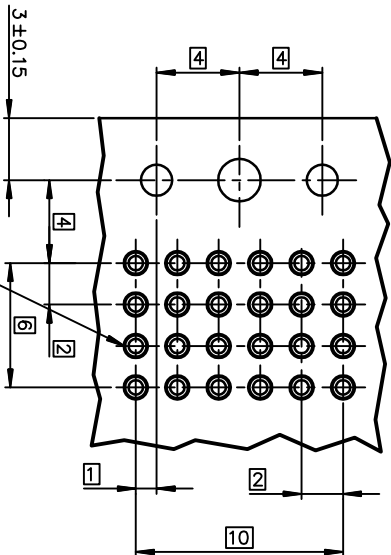
LEAD FREE PART NUMBER

PART NUMBER / CONTACT LOADING										SP. N°
DIM-P ±0.10				P / N AND PERFORMANCE LEVEL						
ROW-A	ROW-B	ROW-C	ROW-D							
5.00	5.00	5.00	5.00		HM1L41ADP000H6PLF					
5.75	5.75	5.75	5.75		HM1L41LDP000H6PLF					
6.50	6.50	6.50	6.50		HM1L41IDP000H6PLF					
6.50	5.00	5.00	5.00		HM1L41BDP000H6PLF					
6.50	5.75	5.75	6.50		HM1L41CDP000H6PLF					
5.00	5.00	6.50	5.00		HM1L41ZDP110H6PLF				110	
5.00	5.75	6.50	5.00		HM1L41ZDP430H6PLF				430	
5.00	5.75	5.00	5.00		HM1L41ZDP448H6PLF				448	
8.00	8.00	8.00	8.00		HM1L41NDP000H6PLF					
5.00	5.00	5.00	5.00		HM1L41ADP001H6PLF					
5.75	5.00	5.00	5.00		HM1L41ZDP009H6PLF				009	
5.75	6.50	5.75	5.00		HM1L41ZDP424H6PLF				424	
6.50	5.75	6.50	5.75		HM1L41ZDP037H6PLF				037	
6.50	5.75	5.00	5.75		HM1L41ZDP102H6PLF				102	
6.50	6.50	6.50	5.75		HM1L41ZDP135H6PLF				135	
6.50	8.00	6.50	5.75		HM1L41ZDP329H6PLF				329	
6.50	5.75	5.75	5.75		HM1L41ZDP369H6PLF				369	

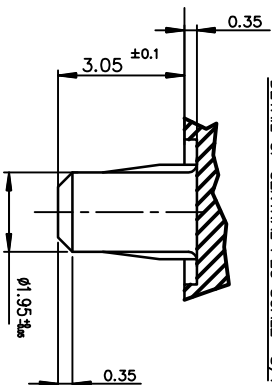
STANDARD MATING LENGTHS = 5.75 (AND 5.00-6.50)

REV F - 2006-04-17

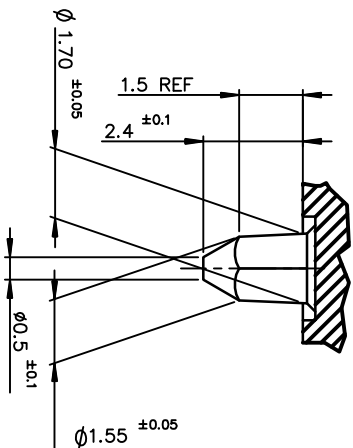
RECOMMENDED PCB LAYOUT



DETAIL OF CENTRAL PEG SCALE 8/1



DETAIL OF LOCATING PEGS (2x) SCALE 8/1

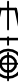
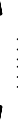


HM1L41ADP001H6PLF
SELECTIVE CONTACT LOADING
NOTE: *-*POSITION LOADED

OTHERS INFORMATIONS,SEE DRW 8626-0150-1

European Views

rev	ech no	dr	date
L	-	-	-
-	-	-	-
-	-	-	-
-	-	-	-
-	-	-	-
-	-	-	-
-	-	-	-

www.fciconnect.com				surface ISO 1302		tolerance std ISO 406 ISO 1101		projection 		mm 		
				TOLERANCES UNLESS OTHERWISE SPECIFIED								
Dr	CHAMPION	1994/04/05	ANGULAR		LINEAR		0.X		±0.1		size A3	Scale 4/1
Eng	De-Feng Qin	2012/02/14					0.XX		±0.1			
Chr	Flame Zeng	2012/02/14	0.XX ±2				0.XXX		±0.1		ECN	
Appr	PM Zheng	2012/02/14	Product family						METRAL		Spec ref -	

Mouser Electronics

Authorized Distributor

Click to View Pricing, Inventory, Delivery & Lifecycle Information:

[FCI / Amphenol:](#)

[HM1L41ADP000H6PLF](#) [HM1L41CDP000H6PLF](#) [HM1L41DDP000H6PLF](#) [HM1L41LDP000H6PLF](#)
[HM1L41ZDP424H6PLF](#)