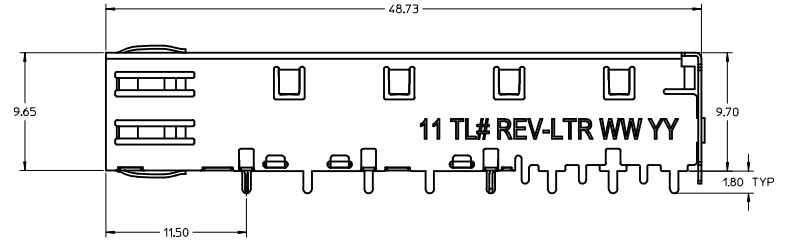
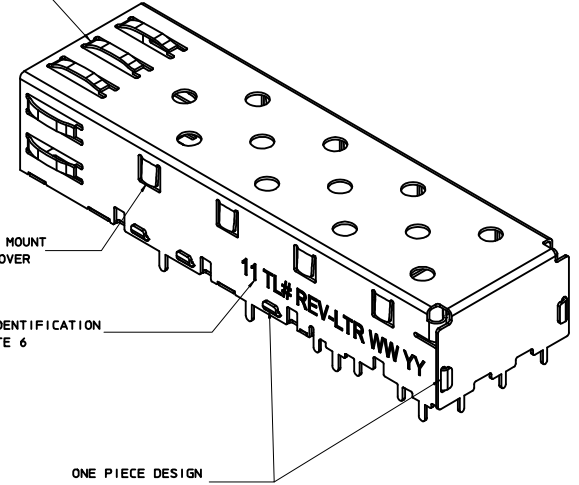


SPRING FINGER GASKET WITH TWO POINTS OF CONTACT. COMPLIES WITH (SFP) MSA BOARD AND BEZEL LOCATIONS.

TABS USED TO MOUNT LIGHT PIPE COVER

CAGE IDENTIFICATION SEE NOTE 6

ONE PIECE DESIGN SECURELY FASTENED

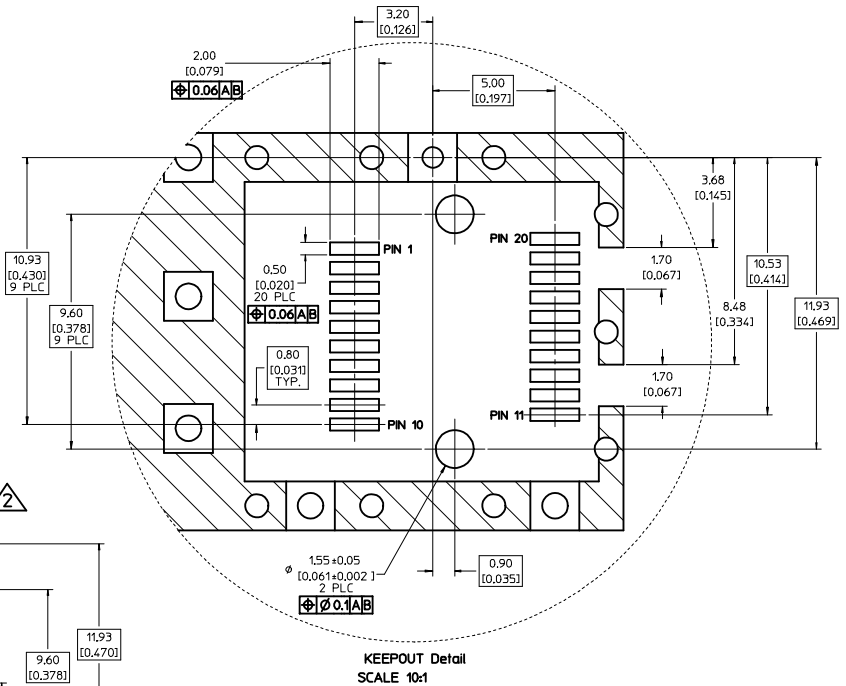
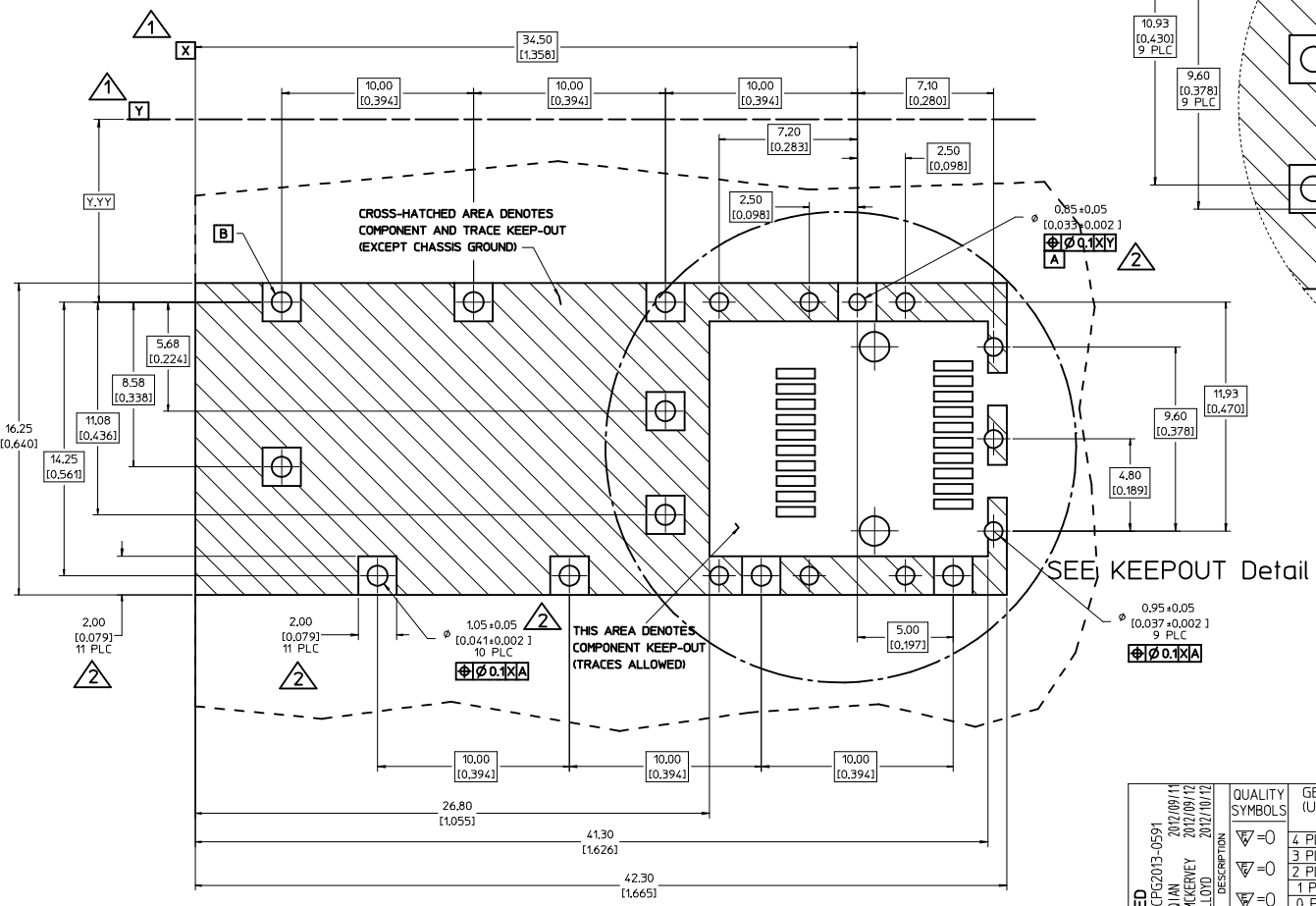


NOTES:

1. THIS CAGE IS FOR SINGLE SIDED USE ONLY.
2. CAN BE USED WITH THE FOLLOWING LIGHT PIPE PART NUMBERS:  
747260001 - LIGHT PIPE FROM BACK TO TOP (REFER TO DOCUMENT SD-74726-001)  
747260002 - LIGHT PIPE FROM SIDE TO TOP (REFER TO DOCUMENT SD-74726-002)
3. MATERIAL: COPPER ALLOY
4. PLATING: MATTE TIN
5. LEAD FREE, NO ROHS EXEMPTIONS
6. IDENTIFICATION IS STAMPED AS SHOWN ON RIGHT SIDE OF CAGE  
LAST TWO DIGITS OF PART NUMBER  
TOOLING NUMBER  
REV LETTER OF CAGE  
WW: WEEK OF THE YEAR PER ISO 8601  
YY: LAST TWO DIGITS OF THE YEAR, FOR EXAMPLE 2013 - 13  
EXAMPLE: 11 2 A 03 12

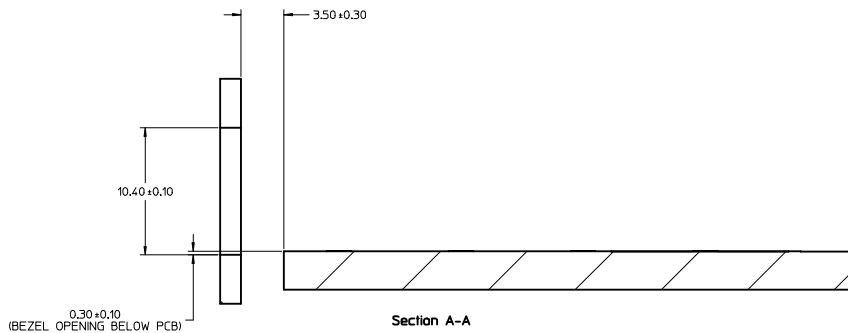
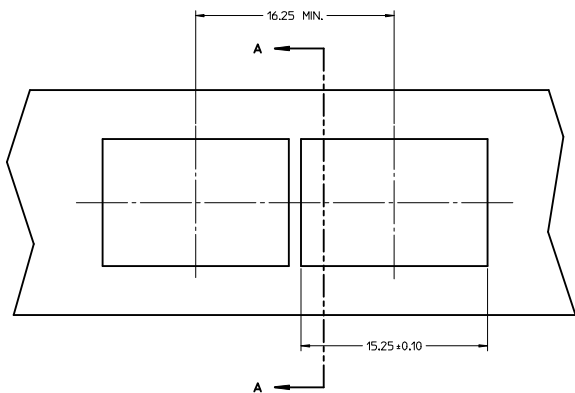
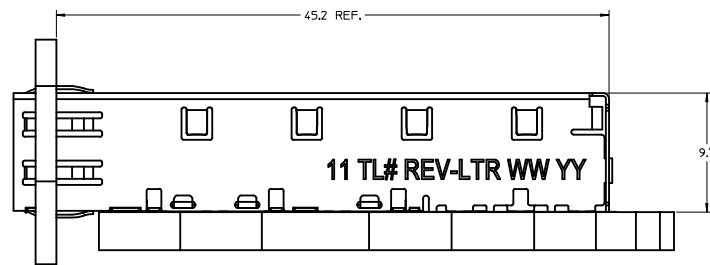
REVISED EC NO: CPG2013-0591 DRAWN BY: CHKOMCKERVEY CHECKED BY: APPR: K LLOYD DATE: 2012/09/11 DATE: 2012/10/12	QUALITY SYMBOLS	GENERAL TOLERANCES (UNLESS SPECIFIED)	DIMENSION STYLE	SCALE	DESIGN UNITS	THIRD ANGLE PROJECTION
	$\nabla=0$ 4 PLACES ± --- ± --- $\nabla=0$ 3 PLACES ± --- ± --- $\nabla=0$ 2 PLACES ± 0.13 ± --- $\nabla=0$ 1 PLACE ± 0.25 ± --- $\nabla=0$ 0 PLACE ± ± ---	mm INCH	MM ONLY	5:1	METRIC	
			DRAWN BY: MMCKERVEY DATE: 2011/07/25	TITLE: 1X1 SFP TAPE AND REEL		
			CHECKED BY: K LLOYD DATE: 2012/01/05	APPROVED BY: K LLOYD DATE: 2012/01/05		
		ANGULAR ± 1 ° DRAFT WHERE APPLICABLE MUST REMAIN WITHIN DIMENSIONS	MATERIAL NO: 747370111	DOCUMENT NO: SD-74737-0111	SHEET NO: 1 OF 5	
			THIS DRAWING CONTAINS INFORMATION THAT IS PROPRIETARY TO MOLEX INCORPORATED AND SHOULD NOT BE USED WITHOUT WRITTEN PERMISSION			

- DATUM AND BASIC DIMENSIONS ESTABLISHED BY CUSTOMER.
- PADS AND VIAS ARE CHASSIS GROUND.
- HOLE LAYOUT SHOWN IS FOR SINGLE SIDED MOUNTING ONLY.
- CONNECTOR PAD LAYOUT PER SFP MSA, WILL ACCOMODATE MOLEX CONNECTOR SERIES 74441 OR EQUIVALENT.



<b>REVISED</b> EC NO: CPG2013-0591 DRAWN BY: DRWINFOJIAN 2012/09/11 CHECKED BY: CHYKMMCKERVEY 2012/09/12 APPROVED BY: KLLLOYD 2012/10/12	QUALITY SYMBOLS	GENERAL TOLERANCES (UNLESS SPECIFIED)	DIMENSION STYLE	SCALE	DESIGN UNITS	THIRD ANGLE PROJECTION
	▽=0	4 PLACES ± ---	MM ONLY	5:1	METRIC	☉
	▽=0	3 PLACES ± 0.13				
	▽=0	2 PLACES ± 0.25				
		0 PLACE ± ±				
		ANGULAR ± 1°				
		DRAFT WHERE APPLICABLE MUST REMAIN WITHIN DIMENSIONS				
			DRAWN BY: MCKERVEY DATE: 2011/07/25			
			CHECKED BY: DATE:			
			APPROVED BY: KLLLOYD DATE: 2012/01/05			
			MATERIAL NO: 747370111			
			DOCUMENT NO: SD-74737-0111			
						SHEET NO. 2 OF 5

20 19 18 17 16 15 14 13 12 11 10 9 8 7 6 5 4 3 2 1



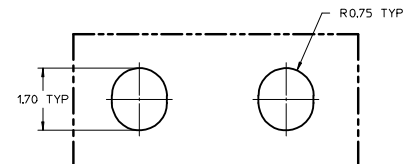
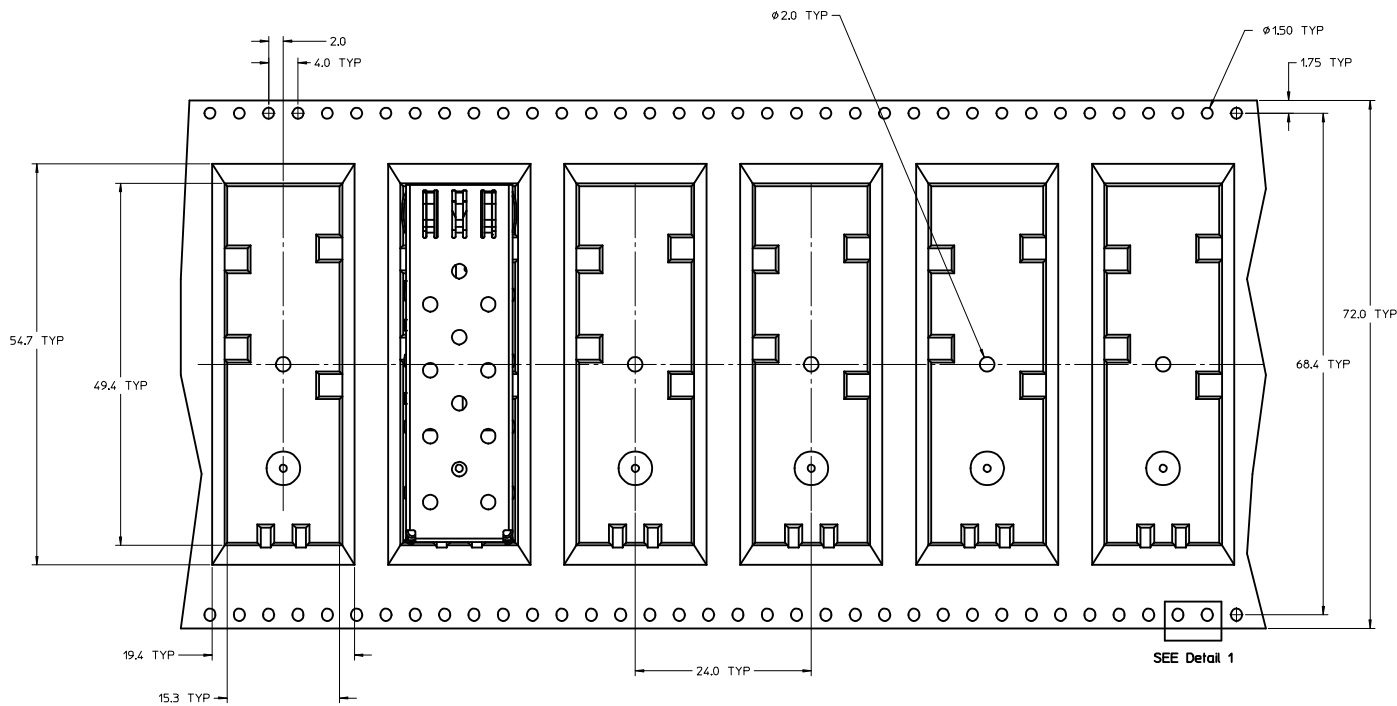
<b>REVISED</b> EC NO: CPG2013-0591 DORNFELIAN 2012/09/11 CHYOMCKERVEY 2012/09/12 APPR:KLLOYD 2012/10/12	QUALITY SYMBOLS ▽=0 ▽=0 ▽=0	GENERAL TOLERANCES (UNLESS SPECIFIED)		DIMENSION STYLE <b>MM ONLY</b>	SCALE <b>5:1</b>	DESIGN UNITS <b>METRIC</b>	THIRD ANGLE PROJECTION		
		4 PLACES ± --- ± --- 3 PLACES ± --- ± --- 2 PLACES ± 0.13 ± --- 1 PLACE ± 0.25 ± --- 0 PLACE ± ±	mm INCH	DRAWN BY MMCKERVEY	DATE 2011/07/25	TITLE <b>1X1 SFP TAPE AND REEL</b>			
		DRAFT WHERE APPLICABLE MUST REMAIN WITHIN DIMENSIONS		APPROVED BY KLLOYD	DATE 2012/01/05	MATERIAL NO. <b>747370111</b>			
				ANGULAR ± 1 °		DOCUMENT NO. <b>SD-74737-0111</b>	SHEET NO. <b>3 OF 5</b>		

**molex**

THIS DRAWING CONTAINS INFORMATION THAT IS PROPRIETARY TO MOLEX INCORPORATED AND SHOULD NOT BE USED WITHOUT WRITTEN PERMISSION

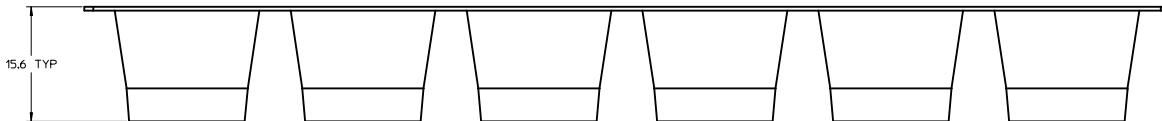
19 18 17 16 15 14 13 12 11 10 9 8 7 6 5 4 3 2 1

20 19 18 17 16 15 14 13 12 11 10 9 8 7 6 5 4 3 2 1



Detail 1  
Scale 15:1

TAPE FEED DIRECTION →



<b>REVISED</b> EEC NO: CPG2013-0591 2012/09/11 DORWEN/JOAN CHYK/MCKERVEY APPR:K.LLOYD 2012/10/12 REV DESCRIPTION	QUALITY SYMBOLS ∇=0 ∇=0 ∇=0		GENERAL TOLERANCES (UNLESS SPECIFIED) <table border="1"> <thead> <tr> <th></th> <th>mm</th> <th>INCH</th> </tr> </thead> <tbody> <tr> <td>4 PLACES</td> <td>±0.13</td> <td>±0.005</td> </tr> <tr> <td>3 PLACES</td> <td>±0.25</td> <td>±0.010</td> </tr> <tr> <td>2 PLACES</td> <td>±0.38</td> <td>±0.015</td> </tr> <tr> <td>1 PLACE</td> <td>±0.51</td> <td>±0.020</td> </tr> <tr> <td>0 PLACE</td> <td>±0.64</td> <td>±0.025</td> </tr> </tbody> </table>			mm	INCH	4 PLACES	±0.13	±0.005	3 PLACES	±0.25	±0.010	2 PLACES	±0.38	±0.015	1 PLACE	±0.51	±0.020	0 PLACE	±0.64	±0.025	DIMENSION STYLE <b>MM ONLY</b>		SCALE <b>3:1</b>		DESIGN UNITS <b>METRIC</b>		THIRD ANGLE PROJECTION	
		mm	INCH																											
	4 PLACES	±0.13	±0.005																											
	3 PLACES	±0.25	±0.010																											
2 PLACES	±0.38	±0.015																												
1 PLACE	±0.51	±0.020																												
0 PLACE	±0.64	±0.025																												
DRAWN BY MCKERVEY			DATE 2011/07/25			TITLE <b>1X1 SFP TAPE AND REEL</b>																								
CHECKED BY K.LLOYD			DATE 2012/01/05			MATERIAL NO. <b>747370111</b>																								
APPROVED BY K.LLOYD			DATE 2012/01/05			DOCUMENT NO. <b>SD-74737-0111</b>																								
DRAFT WHERE APPLICABLE MUST REMAIN WITHIN DIMENSIONS			ANGULAR ± 1 °			SHEET NO. <b>4 OF 5</b>																								

**molex**

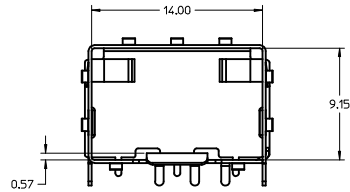
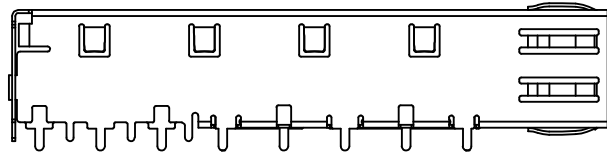
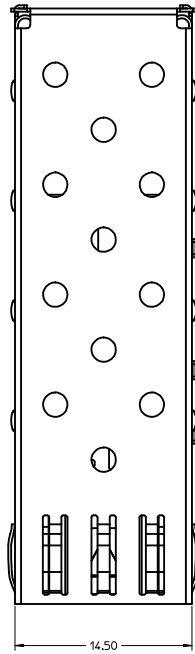
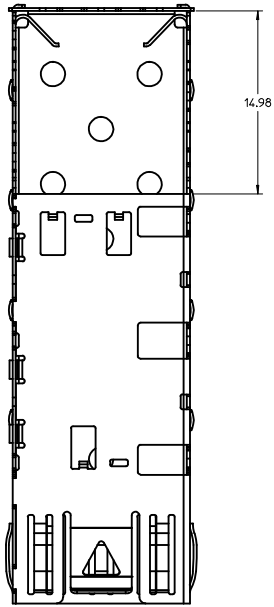
THIS DRAWING CONTAINS INFORMATION THAT IS PROPRIETARY TO MOLEX INCORPORATED AND SHOULD NOT BE USED WITHOUT WRITTEN PERMISSION

19 18 17 16 15 14 13 12 11 10 9 8 7 6 5 4 3 2 1

DATE	REV	DESCRIPTION
2011-07-25	1	PRE-RELEASE
2011-12-05	A	INITIAL RELEASE; PART IDENTIFICATION CHANGED [SHT1]; TAPE CHANGED TO TWO LAYER BOTTOM [SHT4]; CHANGED HOLE SPACING TO 68.4MM [SHT4]; ADDED DETAIL VIEW 1 [SHT4];
2012-01-05	A1	REMOVED 8.58 AND REPLACED WITH 0.57 [SHT1]; ADDED 0.30±0.10 [SHT3]; CORRECTED ARROW APPEARANCE [SHT4]
2012-08-08	C	DIM 1.80 UPDATED TO 1.80 TYP [SHT 1]. SECTION LINE MOVED [SHT 3], UPDATED ALL VIEWS [SHT4], UPDATED 15.1 TYP TO 15.3 TYP [SHT4], UPDATED 49.1 TYP TO 49.4 TYP [SHT4], UPDATED 14 TYP TO 15.6 TYP [SHT 4]
2012-09-12	D	UPDATED TRAY REEL CONE HEIGHT [SHT 4]

REVISED IEC NO: CPG2013-0591 D DRAWN BY: CHYKMMCKERVEY APPR: KLLLOYD	2012/09/11 2012/09/12 2012/10/12	QUALITY SYMBOLS ∇=0 ∇=0 ∇=0	GENERAL TOLERANCES (UNLESS SPECIFIED)		DIMENSION STYLE <b>MM ONLY</b>	SCALE <b>5:1</b>	DESIGN UNITS <b>METRIC</b>	THIRD ANGLE PROJECTION
			4 PLACES ± mm INCH 3 PLACES ± --- ± --- 2 PLACES ± 0.13 ± --- 1 PLACE ± 0.25 ± --- 0 PLACE ± ±	DRAWN BY: MMCKERVEY DATE: 2011/07/25	TITLE <b>1X1 SFP TAPE AND REEL</b>			
			ANGULAR ± 1 ° DRAFT WHERE APPLICABLE MUST REMAIN WITHIN DIMENSIONS	CHECKED BY: KLLLOYD DATE: 2012/01/05	MATERIAL NO. <b>747370111</b>	DOCUMENT NO. <b>SD-74737-0111</b>	SHEET NO. <b>5 OF 5</b>	
			SIZE <b>D</b> THIS DRAWING CONTAINS INFORMATION THAT IS PROPRIETARY TO MOLEX INCORPORATED AND SHOULD NOT BE USED WITHOUT WRITTEN PERMISSION					



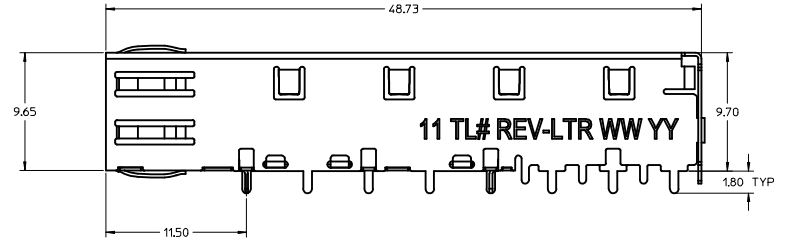
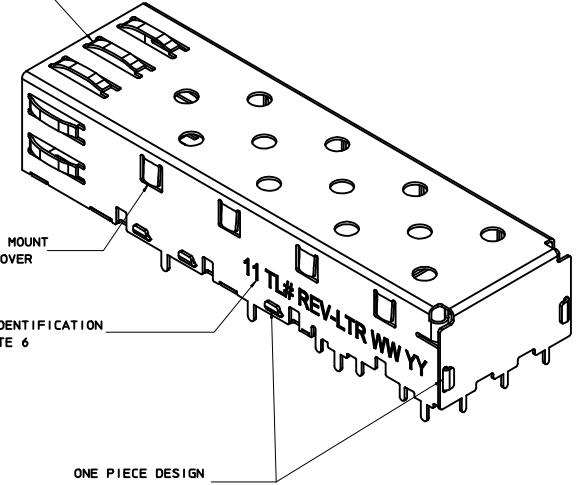


SPRING FINGER GASKET WITH TWO POINTS OF CONTACT. COMPLIES WITH (SFP) MSA BOARD AND BEZEL LOCATIONS.

TABS USED TO MOUNT LIGHT PIPE COVER

CAGE IDENTIFICATION SEE NOTE 6

ONE PIECE DESIGN SECURELY FASTENED

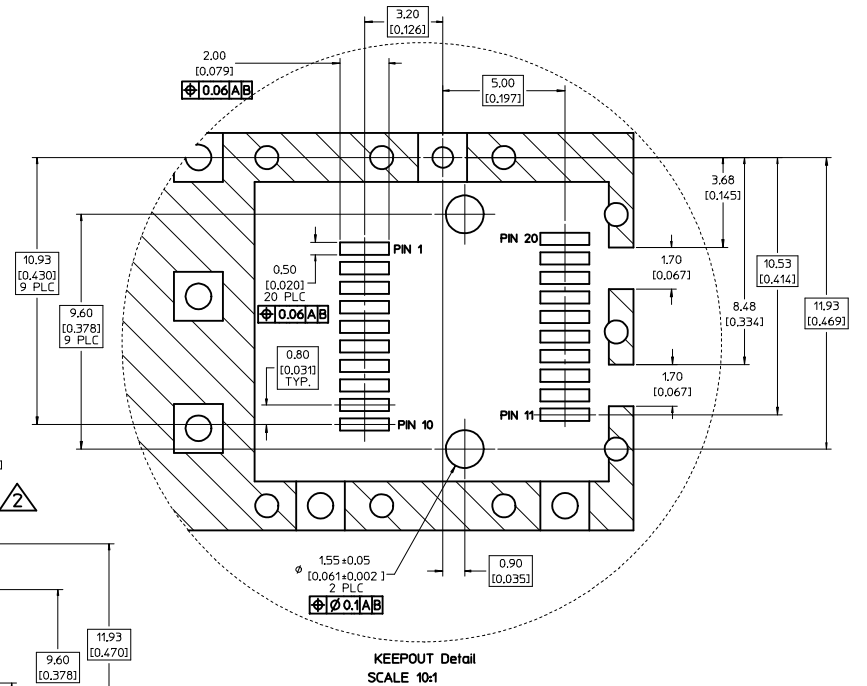
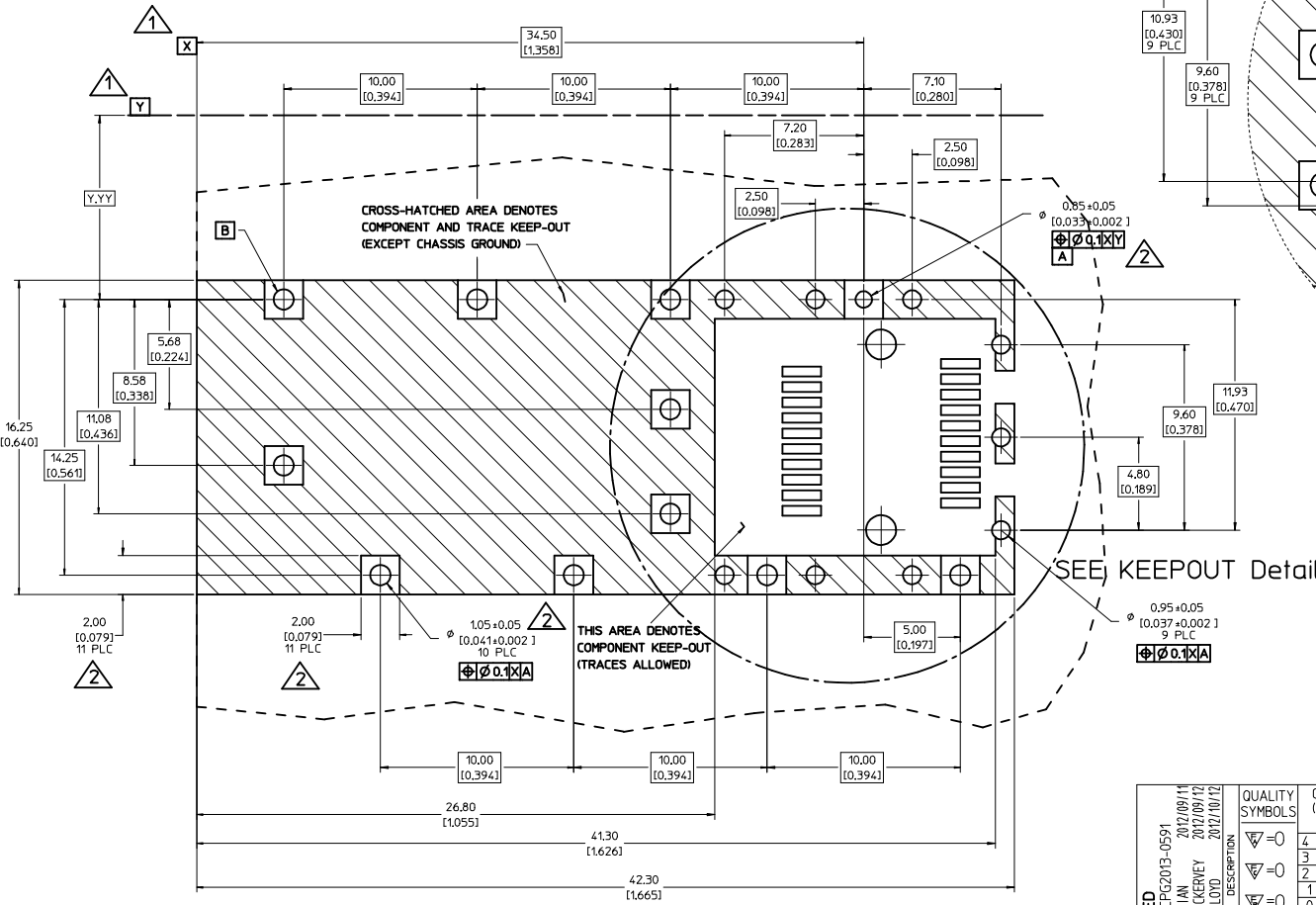


**NOTES:**

1. THIS CAGE IS FOR SINGLE SIDED USE ONLY.
2. CAN BE USED WITH THE FOLLOWING LIGHT PIPE PART NUMBERS:  
 747260001 - LIGHT PIPE FROM BACK TO TOP (REFER TO DOCUMENT SD-74726-001)  
 747260002 - LIGHT PIPE FROM SIDE TO TOP (REFER TO DOCUMENT SD-74726-002)
3. MATERIAL: COPPER ALLOY
4. PLATING: MATTE TIN
5. LEAD FREE, NO ROHS EXEMPTIONS
6. IDENTIFICATION IS STAMPED AS SHOWN ON RIGHT SIDE OF CAGE  
 LAST TWO DIGITS OF PART NUMBER  
 TOOLING NUMBER  
 REV LETTER OF CAGE  
 WW: WEEK OF THE YEAR PER ISO 8601  
 YY: LAST TWO DIGITS OF THE YEAR, FOR EXAMPLE 2013 - 13  
 EXAMPLE: 11 2 A 03 12

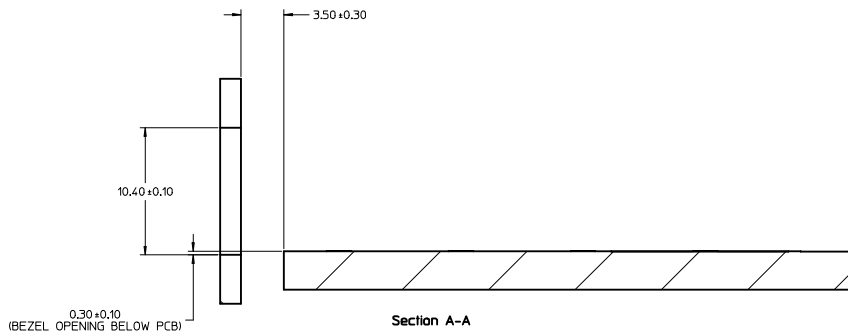
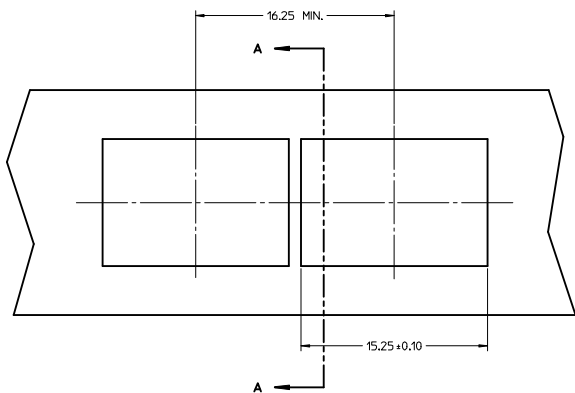
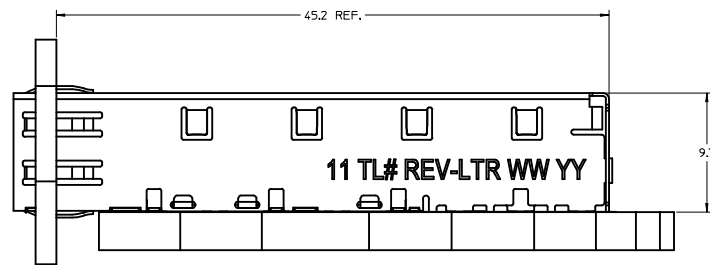
REVISED EC NO: CPG2013-0591 D DRAWN BY: CHOKOMCKERVEY 2012/09/11 2012/09/12 APPROVED BY: APPR:K LLOYD 2012/10/12	QUALITY SYMBOLS	GENERAL TOLERANCES (UNLESS SPECIFIED):	DIMENSION STYLE	SCALE	DESIGN UNITS	THIRD ANGLE PROJECTION	
	∇=0 ∇=0 ∇=0	4 PLACES ± --- INCH 3 PLACES ± --- INCH 2 PLACES ± 0.13 INCH 1 PLACE ± 0.25 INCH 0 PLACE ± INCH	MM ONLY	5:1	METRIC	DRAWN BY: DATE MMCKERVEY 2011/07/25 CHECKED BY: DATE APPROVED BY: DATE K LLOYD 2012/01/05	TITLE 1X1 SFP TAPE AND REEL
	ANGULAR ± 1 ° DRAFT WHERE APPLICABLE MUST REMAIN WITHIN DIMENSIONS	MATERIAL NO.	DOCUMENT NO.	SHEET NO. 1 OF 5			
	SIZE D	747370111	SD-74737-0111	molex THIS DRAWING CONTAINS INFORMATION THAT IS PROPRIETARY TO MOLEX INCORPORATED AND SHOULD NOT BE USED WITHOUT WRITTEN PERMISSION			

- 1 DATUM AND BASIC DIMENSIONS ESTABLISHED BY CUSTOMER.
- 2 PADS AND VIAS ARE CHASSIS GROUND.
- 3 HOLE LAYOUT SHOWN IS FOR SINGLE SIDED MOUNTING ONLY.
- 4 CONNECTOR PAD LAYOUT PER SFP MSA, WILL ACCOMODATE MOLEX CONNECTOR SERIES 74441 OR EQUIVALENT.



<b>REVISED</b> EC NO: CPG2013-0591 DRAWN BY: DWINFOJIAN 2012/09/11 CHECKED BY: CHKOMCKERVEY 2012/09/12 APPROVED BY: KLLLOYD 2012/10/12 DESCRIPTION:	QUALITY SYMBOLS	GENERAL TOLERANCES (UNLESS SPECIFIED)	DIMENSION STYLE	SCALE	DESIGN UNITS	THIRD ANGLE PROJECTION	
	$\nabla=0$ $\nabla=0$ $\nabla=0$	4 PLACES ± --- 3 PLACES ± 0.13 2 PLACES ± 0.25 1 PLACE ± ± 0 PLACE ± ±	mm INCH --- ± --- ± 0.13 ± --- ± 0.25 ± --- ± ±	MM ONLY	5:1	METRIC	THIRD ANGLE PROJECTION
		ANGULAR ± 1 ° DRAFT WHERE APPLICABLE MUST REMAIN WITHIN DIMENSIONS	DRAWN BY: MMCKERVEY DATE: 2011/07/25 CHECKED BY: DATE:				TITLE: 1X1 SFP TAPE AND REEL
			APPROVED BY: KLLLOYD DATE: 2012/01/05 MATERIAL NO: 747370111 DOCUMENT NO: SD-74737-0111				
						SHEET NO. 2 OF 5	

20 19 18 17 16 15 14 13 12 11 10 9 8 7 6 5 4 3 2 1



<b>REVISED</b> EC NO: CPG2013-0591 DORNFELIAN 2012/09/11 CHYOMCKERVEY 2012/09/12 APPR:KLLOYD 2012/10/12	QUALITY SYMBOLS ▽=0 ▽=0 ▽=0	GENERAL TOLERANCES (UNLESS SPECIFIED)		DIMENSION STYLE <b>MM ONLY</b>	SCALE <b>5:1</b>	DESIGN UNITS <b>METRIC</b>	THIRD ANGLE PROJECTION
		4 PLACES ± --- ± --- 3 PLACES ± --- ± --- 2 PLACES ± 0.13 ± --- 1 PLACE ± 0.25 ± --- 0 PLACE ± ±	mm INCH ± --- ± --- ± 0.13 ± --- ± 0.25 ± --- ± ±	DRAWN BY MMCKERVEY	DATE 2011/07/25	TITLE <b>1X1 SFP TAPE AND REEL</b>	MATERIAL NO. <b>747370111</b> DOCUMENT NO. <b>SD-74737-0111</b>
DRAFT WHERE APPLICABLE MUST REMAIN WITHIN DIMENSIONS		ANGULAR ± 1 °		APPROVED BY KLLOYD	DATE 2012/01/05	SHEET NO. <b>3 OF 5</b>	
THIS DRAWING CONTAINS INFORMATION THAT IS PROPRIETARY TO MOLEX INCORPORATED AND SHOULD NOT BE USED WITHOUT WRITTEN PERMISSION							

19 18 17 16 15 14 13 12 11 10 9 8 7 6 5 4 3 2 1





DATE	REV	DESCRIPTION
2011-07-25	1	PRE-RELEASE
2011-12-05	A	INITIAL RELEASE; PART IDENTIFICATION CHANGED [SHT1]; TAPE CHANGED TO TWO LAYER BOTTOM [SHT4]; CHANGED HOLE SPACING TO 68.4MM [SHT4]; ADDED DETAIL VIEW 1 [SHT4];
2012-01-05	A1	REMOVED 8.58 AND REPLACED WITH 0.57 [SHT1]; ADDED 0.30±0.10 [SHT3]; CORRECTED ARROW APPEARANCE [SHT4]
2012-08-08	C	DIM 1.80 UPDATED TO 1.80 TYP [SHT 1]. SECTION LINE MOVED [SHT 3], UPDATED ALL VIEWS [SHT4], UPDATED 15.1 TYP TO 15.3 TYP [SHT4], UPDATED 49.1 TYP TO 49.4 TYP [SHT4], UPDATED 14 TYP TO 15.6 TYP [SHT 4]
2012-09-12	D	UPDATED TRAY REEL CONE HEIGHT [SHT 4]

<b>REVISED</b> IEC NO: CPG2013-0591 DRAWN BY: CHYDMMCKERVEY APPR: K LLOYD	2012/09/11	2012/09/12	2012/10/12	QUALITY SYMBOLS ∇=0 ∇=0 ∇=0	GENERAL TOLERANCES (UNLESS SPECIFIED) mm INCH 4 PLACES ± --- ± --- 3 PLACES ± --- ± --- 2 PLACES ± 0.13 ± --- 1 PLACE ± 0.25 ± --- 0 PLACE ± ±	DIMENSION STYLE <b>MM ONLY</b>	DRAWN BY DATE MMCKERVEY 2011/07/25	SCALE <b>5:1</b>	DESIGN UNITS <b>METRIC</b>	THIRD ANGLE PROJECTION
	CHECKED BY DATE K LLOYD 2012/01/05		TITLE <b>1X1 SFP TAPE AND REEL</b>							
	APPROVED BY DATE K LLOYD 2012/01/05									
	MATERIAL NO. <b>747370111</b>									
DRAFT WHERE APPLICABLE MUST REMAIN WITHIN DIMENSIONS		DOCUMENT NO. <b>SD-74737-0111</b>		SHEET NO. <b>5 OF 5</b>						



THIS DRAWING CONTAINS INFORMATION THAT IS PROPRIETARY TO MOLEX INCORPORATED AND SHOULD NOT BE USED WITHOUT WRITTEN PERMISSION