

LOC	DIST	REVISIONS					
		P	LTR	DESCRIPTION	DATE	DWN	APVD
-	-		A	NEW RELEASE	24OCT2008	CR	DO

1. PART NUMBER CHANGES AND/OR DESIGN CHANGES AFFECTING INTERCHANGEABILITY REQUIRE PRIOR TYCO ELECTRONICS APPROVAL AND AUTHORIZATION BY REVISION TO THIS DRAWING
2. ITEMS PROVIDED TO THIS SPECIFICATION TO BE PERMANENTLY IDENTIFIED PER THE FOLLOWING IDENTIFIER LABEL

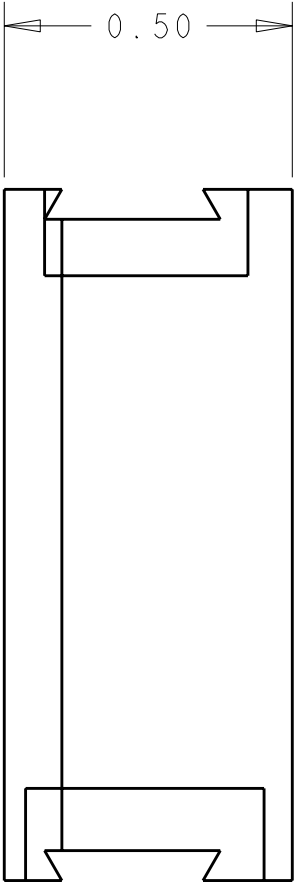
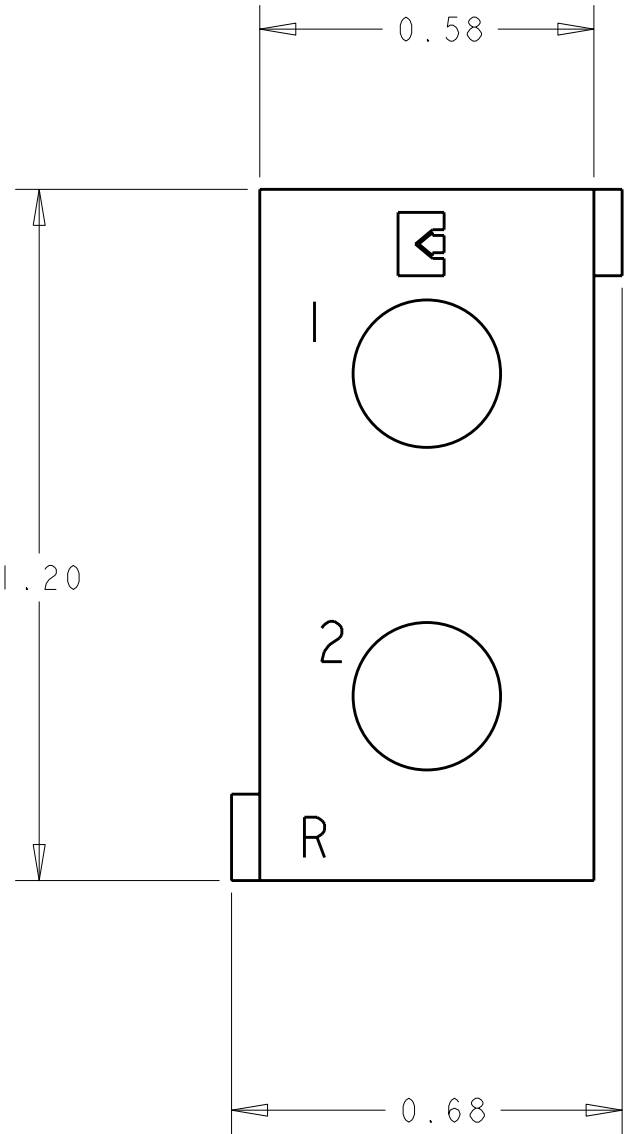
TYCO ELECTRONICS P/N

XXXXXXXX-X

DATE CODE (e.g. 0106)


XXXX

YEAR1WEEK1



ELCON

DOMINO

THIS DRAWING IS A CONTROLLED DOCUMENT FOR TYCO ELECTRONICS CORPORATION IT IS SUBJECT TO CHANGE AND THE CONTROLLING ENGINEERING ORGANIZATION SHOULD BE CONTACTED FOR THE LATEST REVISION.		DWN C. ROHLER 24OCT2008	 Tyco Electronics Tyco Electronics Harrisburg, PA 17105-3608		
		CHK D. ORRIS 24OCT2008			
		APVD M. PERCHERKE 24OCT2008	NAME HOUSING, PIN MODULE R DOMINO		
		PRODUCT SPEC -			
		APPLICATION SPEC -	SIZE		RESTRICTED TO -
		WEIGHT -	A300779C-6648515		
		CUSTOMER DRAWING	SCALE 3:1		SHEET 1 OF 1
					REV A

Mouser Electronics

Authorized Distributor

Click to View Pricing, Inventory, Delivery & Lifecycle Information:

[TE Connectivity:](#)

[6648515-1](#)