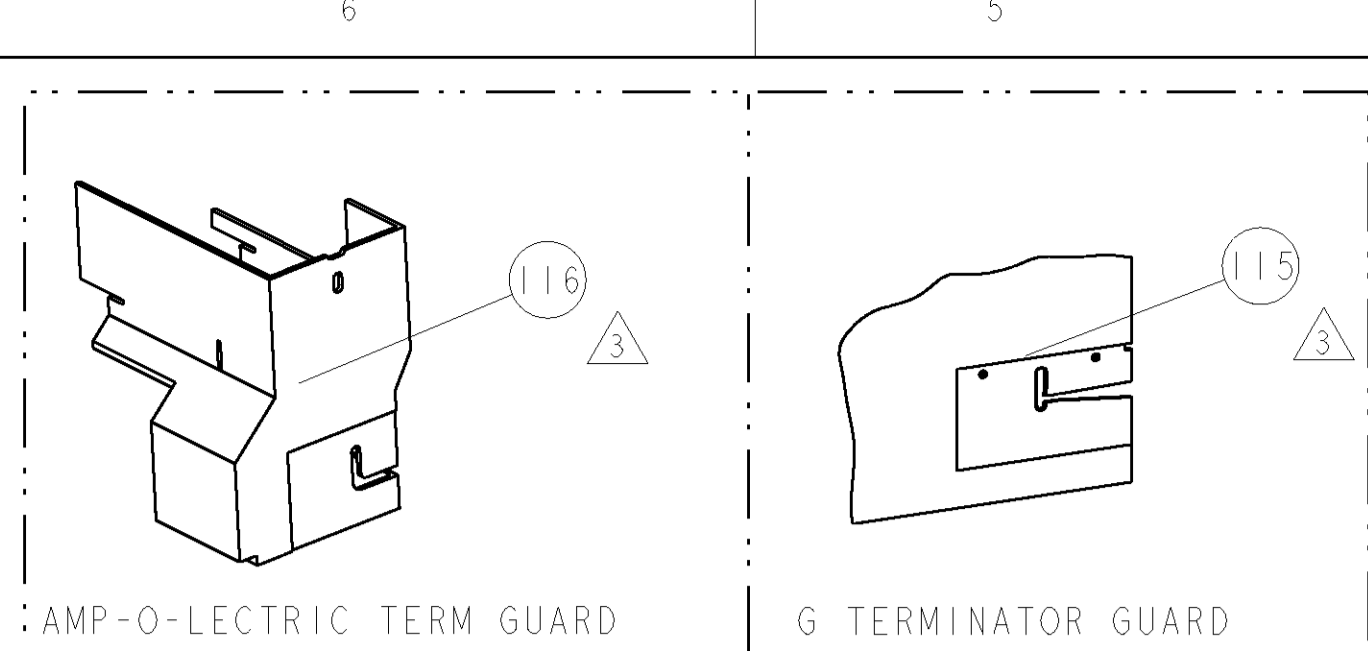


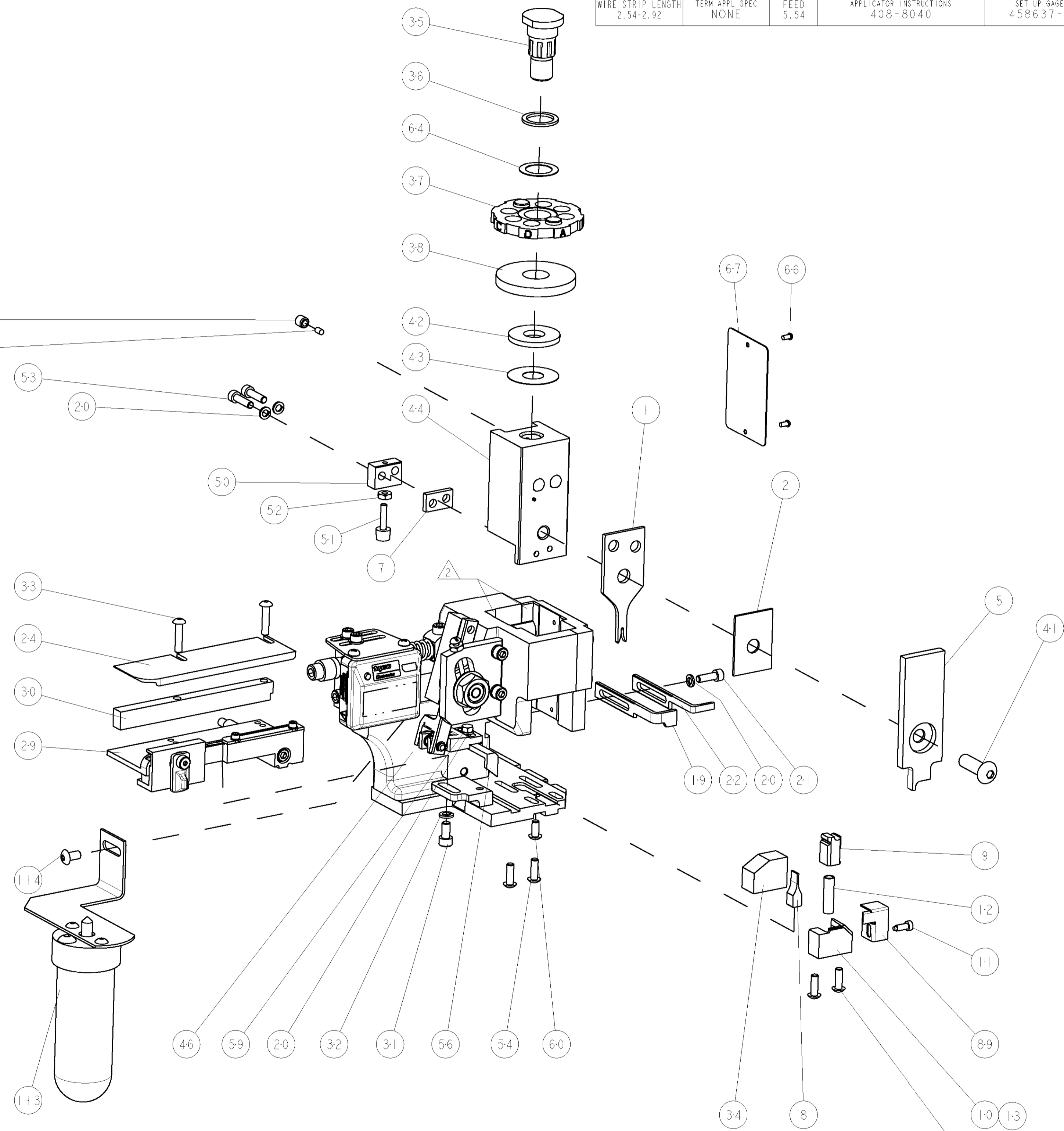
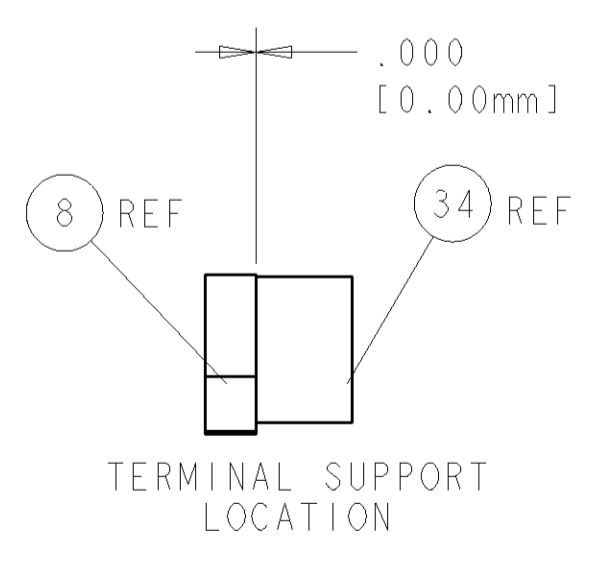
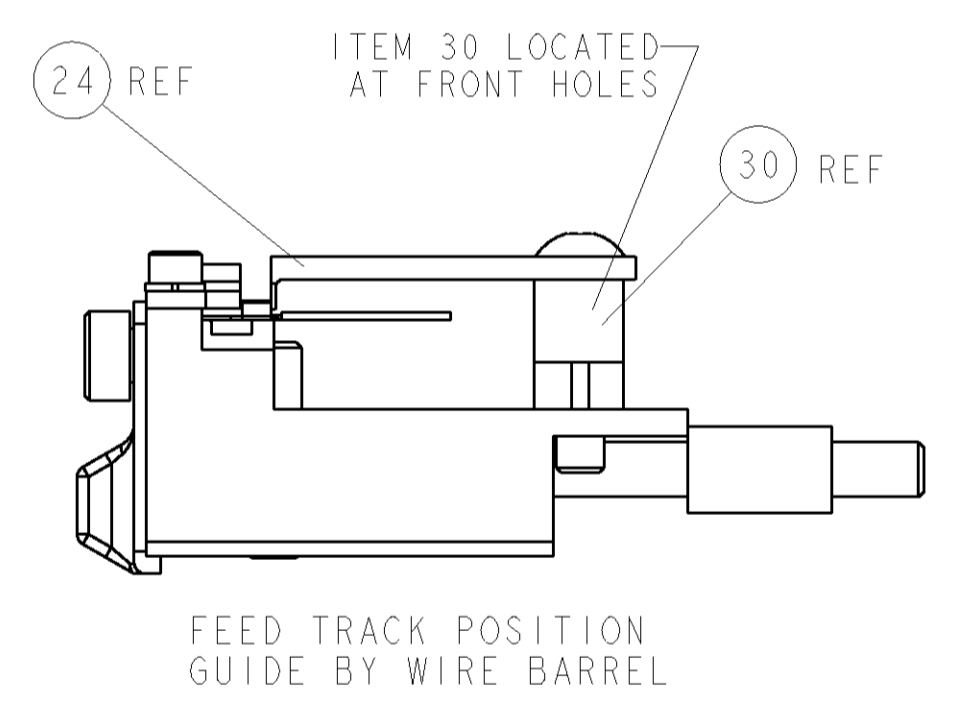
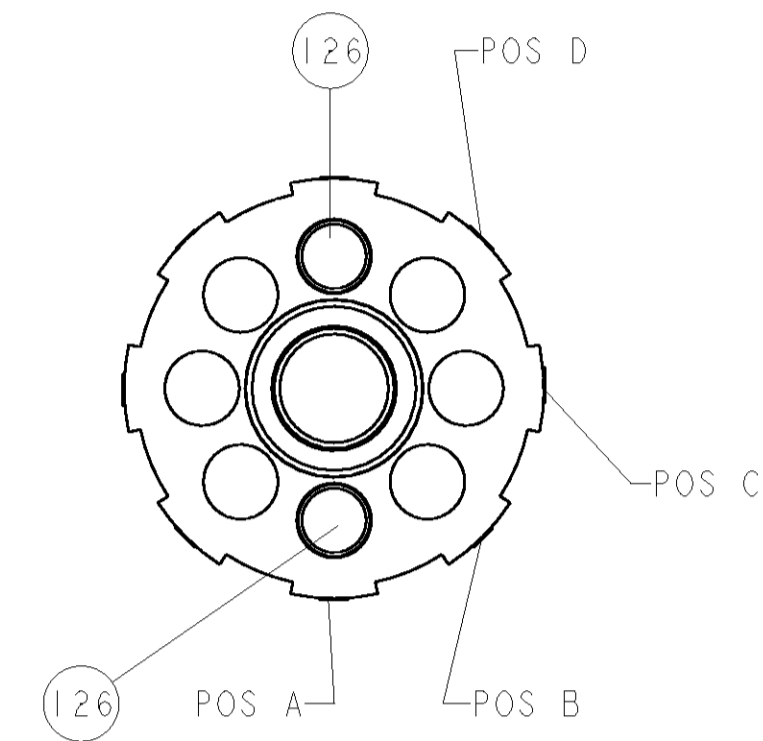
PART NUMBER	REV	FIRST USED	POWER UNIT	FEED TYPE	DESCRIPTION
1852527-1	A	122500-1	LEADMAKER	POST FEED	CUTS CARRIER
1852527-2	A	565435-5	BENCH MODEL K	PRE FEED	CUTS CARRIER
1852527-3	A	354500-1	BENCH MODEL G	PRE FEED	CUTS CARRIER
1852527-6	A	122500-1	LEADMAKER	POST FEED	CONTINUOUS CARRIER
7-1852527-7	A	-	-	-	SPARE PARTS



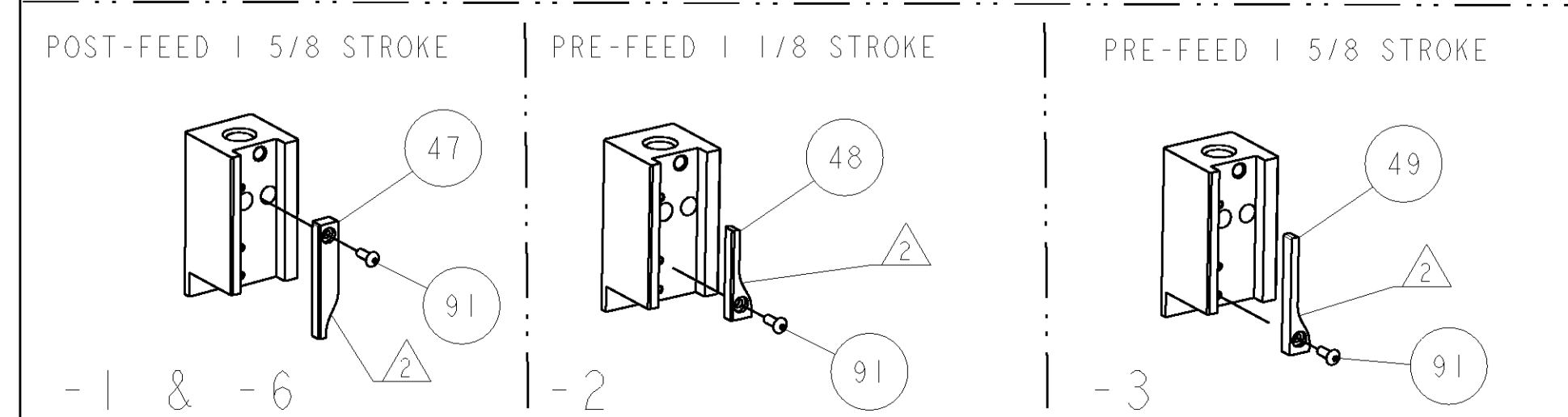
TERMINAL NAME: 1.50x0.80 SENSOR TAB			
TE PN	-	AMP TERMINAL - AMP CRIMP SPECS	
184437	-	PAD LTR	CRIMP HEIGHT
-	-	A	.89±0.05mm [.035±.002]
-	-	B	-
-	-	C	-
-	-	D	-
-	-	CRIMP	SIZE
-	-	WIRE	1.07mm [.042]
-	-	INSUL	TYPE
-	-	FEED	30 AWG
WIRE STRIP LENGTH	2.54-2.92	TERM APPL SPEC	NONE
APPLICATOR INSTRUCTIONS		SET UP GAGE	
408-8040		458637-1	

LOC	DIST	REV	DESCRIPTION	DATE	DWN	APPR
A	66	A	RELEASED	10SEP2007	BH	BH

- △ RECOMMENDED SPARE PARTS
- △ GREASE LIGHTLY
- △ GUARD MUST BE IN PLACE WHEN OPERATING APPLICATOR IN A BENCH MACHINE



-	2	2	2	2	-	3-354779-6	PIN, WIRE DISC, .3170	126
-	-	-	REF	-	..	455749-1	GUARD WINDOW	116
-	-	-	REF	-	..	679532-1	INSERT, GUARD	115
-	-	-	1	-	-	2-21002-6	SCR, BTN SKT HD CAP 10-32 X .375	114
-	-	-	1	-	..	1-465184-0	LUBRICATOR ASSY	113
-	1	1	1	1	-	1-21002-7	SCR, BTN SKT HD CAP 6-32 X .375	91
-	1	1	1	1	-	318563-1	GUARD, FRONT CHIP	89
-	1	1	1	1	-	4088040	SF APPL INST 408-8040	72
-	1	1	1	1	-	217238-1	GENERAL INSTRUCTION PKG	71
-	1	1	1	1	-	461264-1	PLATE, IDENTIFICATION	67
-	2	2	2	2	-	21017-2	SCREW, DRIVE	66
-	1	1	1	1	-	986950-1	WASHER, FLAT PRECISION	64
-	1	1	1	1	-	21009-2	SCR, SET, SELF LOCKING 1/4-20 X .250	63
-	1	1	1	1	-	22733-8	SCR, BHSC, SELF-LOCKING, 8-32 X .375	60
-	1	1	1	1	-	2-22603-0	SCR, HEX HD CAP 8-32 X .312	59
-	1	1	1	1	-	4-694433-9	FEED PAWL	56
-	4	4	4	4	-	2-21002-2	SCR, BTN SKT HD CAP 8-32 X .500	54
-	2	2	2	2	-	2-21000-8	SCR, SKT HD CAP 8-32 X .625	53
-	1	1	1	1	-	21018-5	NUT, HEX, REG 6-32	52
-	1	1	1	1	-	811242-2	BUMPER, HOLD DOWN	51
-	1	1	1	1	-	690753-1	SPACER, TONKER	50
-	-	-	1	-	..	690602-6	CAM, PRE FEED, 1 5/8	49
-	-	-	1	-	..	690602-5	CAM, PRE FEED, 1 1/8	48
-	-	-	1	-	-	690501-4	CAM, POST FEED, 1 5/8	47
-	1	1	1	1	-	459456-1	APPL. BASIC SUB ASSY (SIDE WISE MOCA)	46
-	1	1	1	1	-	690191-1	PLUG, NYLON	45
-	1	1	1	1	-	455673-1	RAM, SIDE FEED	44
-	1	1	1	1	-	690125-1	SHIM SUB-ASSY	43
-	1	1	1	1	-	1-690124-4	WASHER, RAM (.120)	42
-	1	1	1	1	-	7-21002-9	SCR, BTN SKT HD CAP 5/16-24 X 1.00	41
-	1	1	1	1	-	690223-2	SPACER, INS.	38
-	1	1	1	1	-	354777-1	WIRE DISC, ASSEMBLY	37
-	1	1	1	1	-	22480-5	SPRING, COMPRESSION	36
-	1	1	1	1	-	690212-1	POST, RAM	35
-	1	1	1	1	-	690786-3	TERMINAL SUPPORT	34
-	2	2	2	2	-	2-21002-4	SCR, BTN SKT HD CAP 8-32 X .750	33
-	1	1	1	1	-	21024-5	WASHER, SPRG LOCK, REG NO 10	32
-	1	1	1	1	-	3-21000-4	SCR, SKT HD CAP 10-32 X .375	31
-	1	1	1	1	-	1320908-9	SPACER, STRIP GUIDE	30
-	1	1	1	1	-	1633091-1	ASSEMBLY, STRIP GUIDE	29
-	1	1	1	1	-	1320928-1	PLATE, STRIP GUIDE	24
-	1	1	1	1	-	690472-2	STRIPPER	22
-	1	1	1	1	-	2-21000-7	SCR, SKT HD CAP 8-32 X .500	21
-	4	4	4	4	-	21024-4	WASHER, SPRG LOCK, REG NO 8	20
-	-	-	1	-	-	691353-1	STRIPPER	19
-	1	1	1	1	-	679625-1	SHEAR HOLDER, FRONT (NO CUT)	13
-	1	1	1	1	-	3-22280-3	SPRING, COMPRESSION	12
-	1	1	1	1	-	690461-1	STOP, SHEAR	11
-	-	-	1	-	-	690459-1	SHEAR HOLDER, FRONT	10
-	1	1	1	1	-	462006-1	FLOATING SHEAR, FRONT	9
-	1	1	1	1	-	2-1633382-1	ANVIL, COMBINATION	8
-	1	1	1	1	-	240641-5	SPACER	7
-	-	-	-	-	..	-	-	6
-	1	1	1	1	-	455889-9	DEPRESSOR, SHEAR	5
-	-	-	-	-	..	-	-	4
-	-	-	-	-	..	-	-	3
-	1	1	1	1	-	1-455888-0	SPACER, CRIMPER	2
-	1	1	1	1	-	456401-3	CRIMPER, WIRE PREMIUM	1
-	77	66	63	62	-1 U/M	PART NO	DESCRIPTION	ITEM NO



DIMENSIONS:		TOLERANCES UNLESS OTHERWISE SPECIFIED:	
INCHES	0 PLC ±.001	1 PLC ±.001	2 PLC ±.001
	3 PLC ±.001	4 PLC ±.001	ANGLES ±.001
MATERIAL	FINISH	WEIGHT	SCALE
-	-	-	3:5
CUSTOMER DRAWING		SCALE	SHEET 1 OF 1
APPROVED:		DATE	REV
B. HIGMAN 13AUG2007		10/27/07	A
B. HIGMAN 13AUG2007		APPROVED:	
I. ELBIN 13AUG2007		APPROVED:	
PRODUCT SPEC		RESTRICTED TO	
APPLICATION SPEC		NONE	
MATERIAL		SCALE 3:5	
WEIGHT		SHEET 1 OF 1	
CUSTOMER DRAWING		REV A	

CUSTOMER VIEWABLE ASSEMBLY

Mouser Electronics

Authorized Distributor

Click to View Pricing, Inventory, Delivery & Lifecycle Information:

[TE Connectivity:](#)

[1852527-1](#)