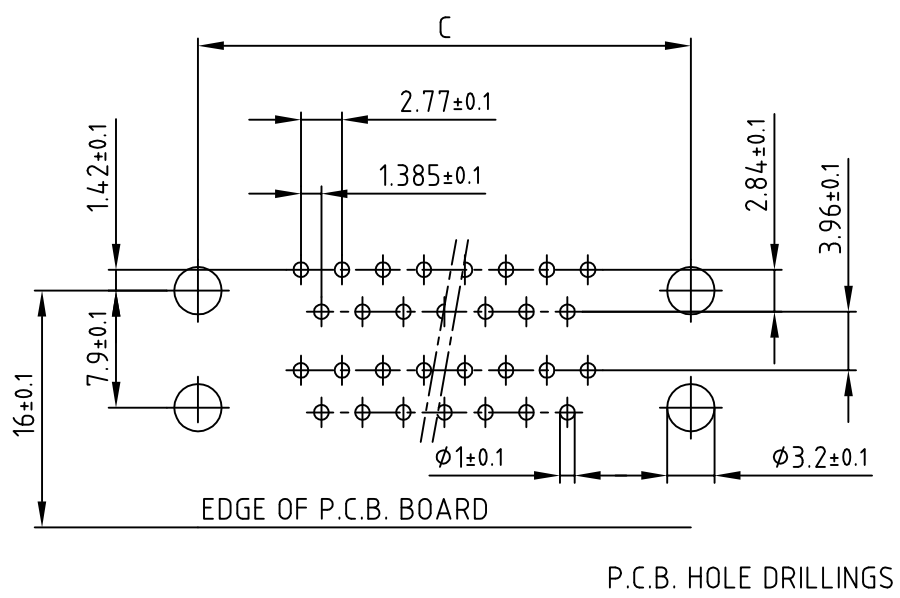
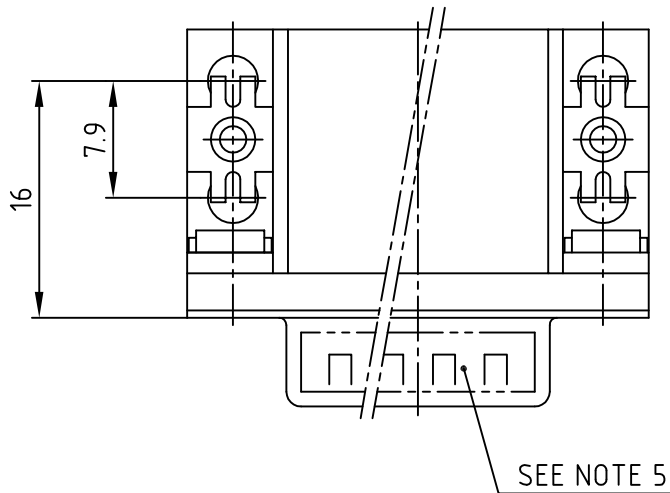
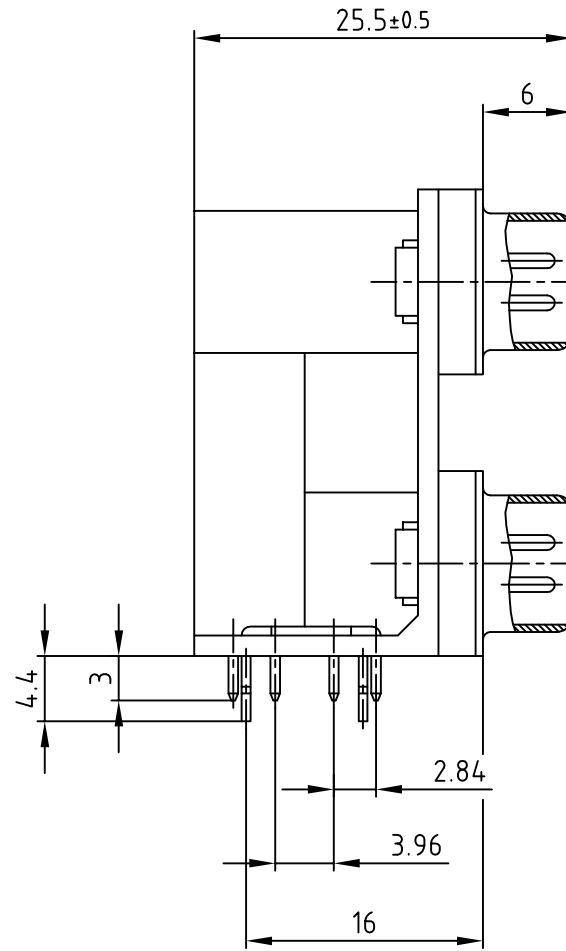
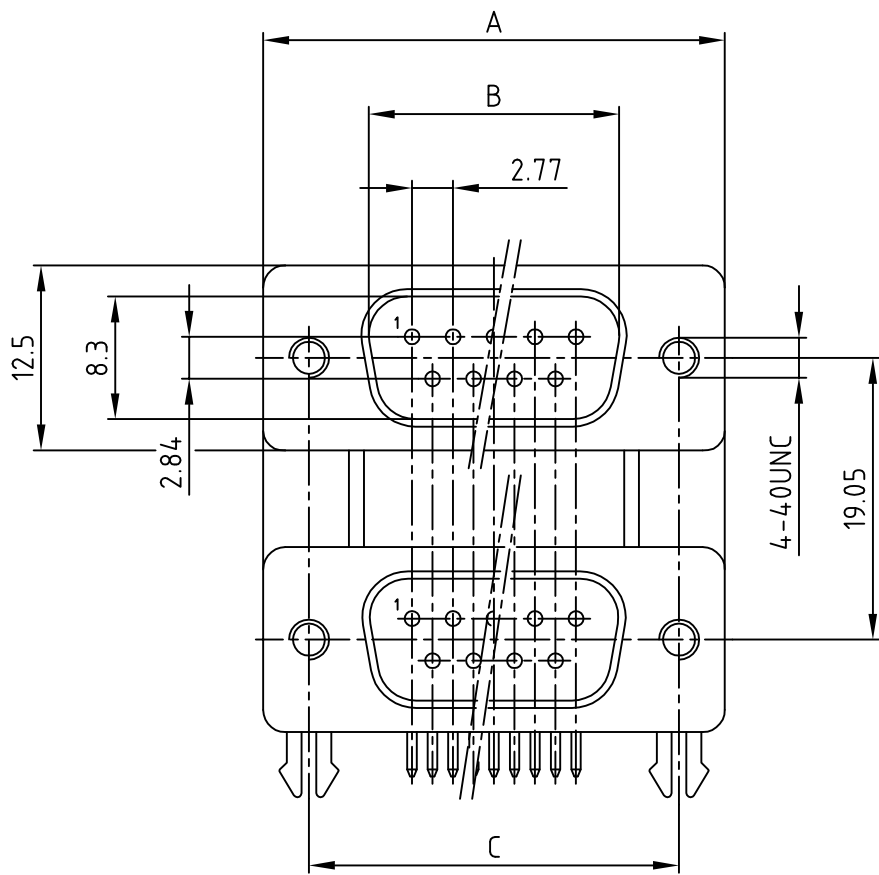


used for: D-SUB DUAL-PORT



| No. of pos. | A | B | C | Part-NO. |
|-------------|-------|-------|-------|--------------|
| 2x 9 | 30.80 | 16.92 | 25.00 | DLS1PP5AN23X |
| 2x15 | 39.20 | 25.25 | 33.30 | DLS2PP5AN23X |
| 2x25 | 53.10 | 38.96 | 47.10 | DLS3PP5AN23X |
| 2x37 | 69.40 | 55.42 | 63.50 | DLS4PP5AN23X |

NOTES:

- METALSHELLS: STEEL; min. 320µ" TIN
- INSULATORS: PBT GF UL 94 V-0, BLACK
- CONTACTS: COPPER ALLOY
PLATING: 8µ" HARD GOLD OVER min. 50µ" NICKEL
- MAXIMUM TORQUE VALUE FOR THREAD: 6" LBS
- CONNECTOR IS PART MARKED: PART-NO. CONEC Y/WW
- = CRITICAL DIMENSION

Directive 2002/95/EC RoHS compliant

| | |
|---|--------|
| APPROVAL # FREIGABE # DEBLOCAGE # AUTOR/ZACION # APPROVAL | |
| CUSTOMER APPROVAL DATE: | |
| NAME: | TITLE: |
| COMPANY NAME: | |
| APPROVAL # FREIGABE # DEBLOCAGE # AUTOR/ZACION # APPROVAL | |

| | | |
|---|-------------|-----------|
| THIS DRAWING MAY NOT BE COPIED OR REPRODUCED IN ANY WAY, AND MAY NOT BE PASSED ON TO A THIRD PARTY WITHOUT WRITTEN PERMISSION. OWNERSHIP AND COPYRIGHT OF CONEC GmbH DO NOT ALTER CAD DRAWING BY HAND | | |
| rev. | description | date name |

| | | | |
|---------------------------|--------|----------------|--|
| tolerance | | dim. in mm | scale: 2:1 |
| | | | material: SEE NOTES |
| 2003 | date | name | D-SUB DUAL-PORT MALE / MALE 2x9pos. - 2x37pos. with 4-40 insert |
| drawn | 12.03. | Parei | |
| appd. | 12.03. | Kühle | |
| norm | | | |
| d-old | | | |
| CONEC [®] | | | dwg no: AutoCAD 2000 |
| | | | 16K1A916 |
| | | | DIN-A 3 sh:1/1 |
| | | | part no: SEE TABLE |

Mouser Electronics

Authorized Distributor

Click to View Pricing, Inventory, Delivery & Lifecycle Information:

[CONEC:](#)

[DLS1PP5AN23X](#) [DLS3PP5AN23X](#)