

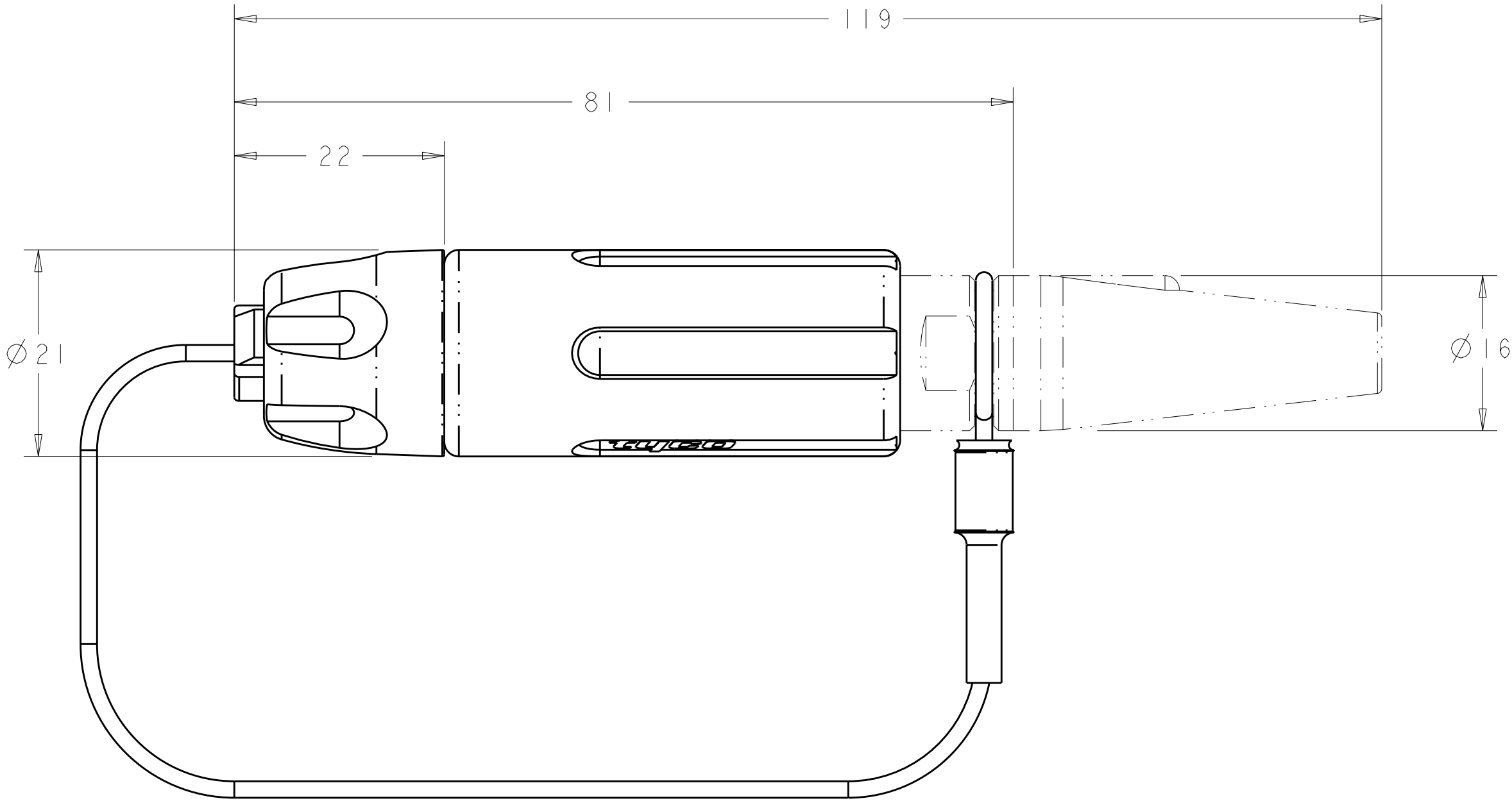
LOC	DIST	REVISIONS					
CE	16	P	LTR	DESCRIPTION	DATE	DWN	APVD
			B	ECR-09-000220	06JAN2009	KG	DW

1. ASSEMBLY SHOWN FOR REFERENCE ONLY.
SHIPPED LOOSE PIECE AS SHOWN ON PAGE 2.
2. ALL ASSEMBLY DIMENSION ARE FOR REFERENCE ONLY.
3. COMPLETE THE CONNECTOR ASSEMBLY BY ADDING EACH OF THE FOLLOWING PRO BEAM MINI KITS:

A. EXPANDED BEAM INSERT ASSEMBLY KIT

B. CABLE ADAPTER KIT, SIZED TO THE CABLE JACKET DIAMETER

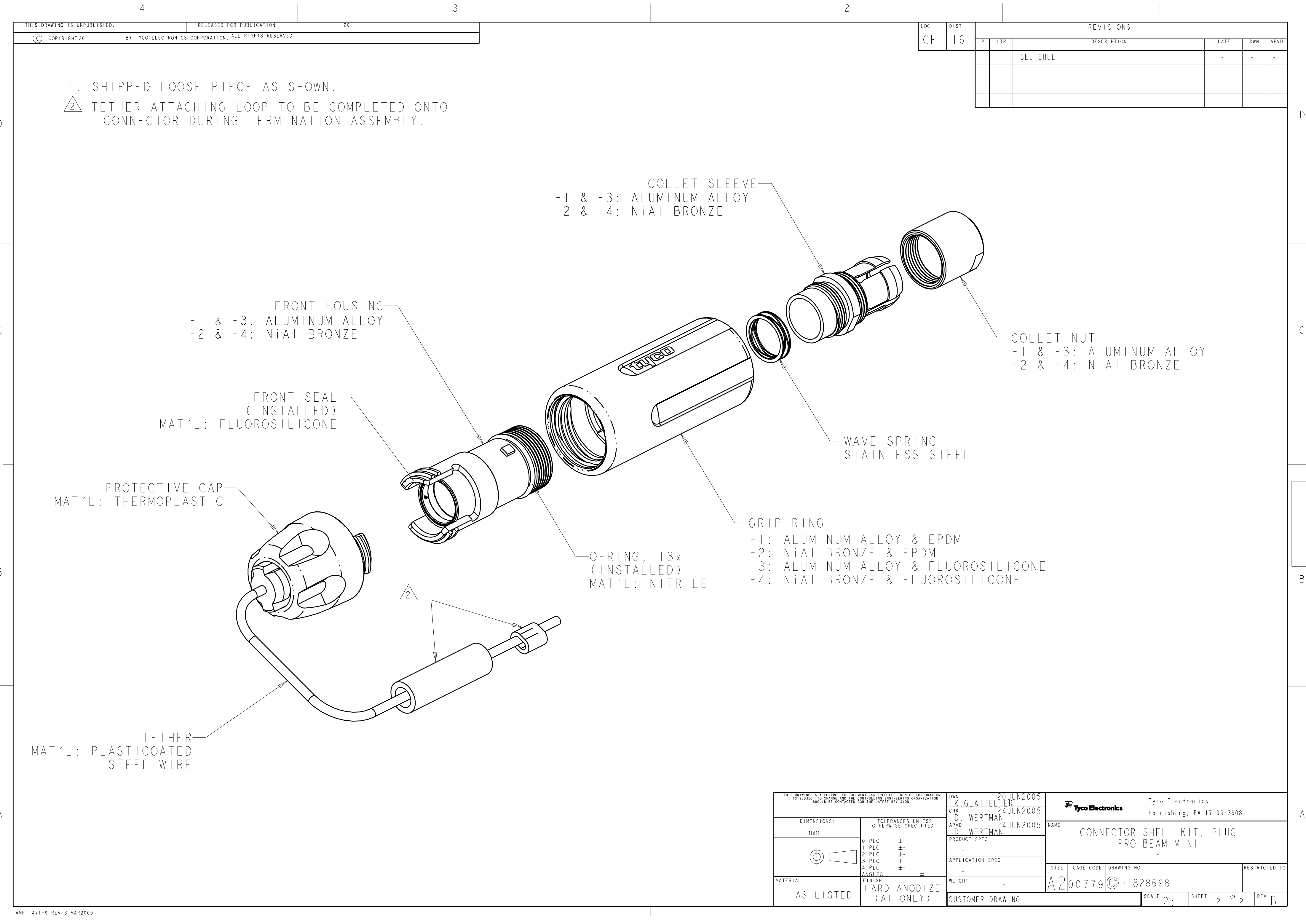
C. FERRULE KIT, ONE PER FIBER
4. THIS PRODUCT HAS NOT COMPLETED VALIDATION TESTING.



SHOWN WITH CABLE ADAPTER KIT INSTALLED
AS PHANTOM LINES FOR VISUAL AND DIMENSIONAL REFERENCE

FLUROSILICONE	NICKEL ALUMINUM BRONZE	1828698-4
	ALUMINUM	1828698-3
EPDM	NICKEL ALUMINUM BRONZE	1828698-2
	ALUMINUM	1828698-1
GRIP RING RUBBER	HOUSING ALLOY	PART NUMBER

THIS DRAWING IS A CONTROLLED DOCUMENT FOR TYCO ELECTRONICS CORPORATION IT IS SUBJECT TO CHANGE AND THE CONTROLLING ENGINEERING ORGANIZATION SHOULD BE CONTACTED FOR THE LATEST REVISION.		DWN K. GLATFELTER 20 JUN 2005	Tyco Electronics Harrisburg, PA 17105-3608			
DIMENSIONS: mm		CHK D. WERTMAN 24 JUN 2005	NAME CONNECTOR SHELL KIT, PLUG PRO BEAM MINI			
TOLERANCES UNLESS OTHERWISE SPECIFIED: 0 PLC ± 1 PLC ± 2 PLC ± 3 PLC ± 4 PLC ± ANGLES ± FINISH HARD ANODIZE (AI ONLY)		APVD D. WERTMAN 24 JUN 2005				
MATERIAL		PRODUCT SPEC -	SIZE A200779		DRAWING NO C-1828698	RESTRICTED TO -
		APPLICATION SPEC -	SCALE 2:1		SHEET 1	OF 2
		WEIGHT -	CUSTOMER DRAWING		REV B	



1. SHIPPED LOOSE PIECE AS SHOWN.
2 TETHER ATTACHING LOOP TO BE COMPLETED ONTO CONNECTOR DURING TERMINATION ASSEMBLY.

LOC	DIST	REVISIONS				
		P	LTR	DESCRIPTION	DATE	APVD
CE	16	-	-	SEE SHEET 1	-	-

THIS DRAWING IS A CONTROLLED DOCUMENT FOR TYCO ELECTRONICS CORPORATION IT IS SUBJECT TO CHANGE AND THE CONTROLLING ENGINEERING ORGANIZATION SHOULD BE CONTACTED FOR THE LATEST REVISION.		DWN K. GLATFELTER 20 JUN 2005	Tyco Electronics Harrisburg, PA 17105-3608	
DIMENSIONS: mm		CHK D. WERTMAN 24 JUN 2005	NAME CONNECTOR SHELL KIT, PLUG PRO BEAM MINI	
TOLERANCES UNLESS OTHERWISE SPECIFIED: 0 PLC ± 1 PLC ± 2 PLC ± 3 PLC ± 4 PLC ± ANGLES ± FINISH HARD ANODIZE (AI ONLY)		APVD D. WERTMAN 24 JUN 2005	SIZE A200779	
MATERIAL AS LISTED		PRODUCT SPEC - APPLICATION SPEC - WEIGHT -	DRAWING NO C-1828698	
		CUSTOMER DRAWING		RESTRICTED TO -
		SCALE 2:1		SHEET 2 OF 2 REV B

Mouser Electronics

Authorized Distributor

Click to View Pricing, Inventory, Delivery & Lifecycle Information:

[TE Connectivity:](#)

[1828698-1](#)