

Fork-type cable lug - C-FCI 2,5/M3,5 - 3240038

Please be informed that the data shown in this PDF Document is generated from our Online Catalog. Please find the complete data in the user's documentation. Our General Terms of Use for Downloads are valid (<http://phoenixcontact.com/download>)



Fork-type cable lug, blue, 1.5 - 2.5 mm², M3,5

Product Features

- The fork-type cable lugs without plastic sleeve feature a hard-soldered neck. In conjunction with the CRIMPFOX-RC ... and CRIMPFOX-RCI ... pliers they can be used to achieve maximum conductor pull-out forces
- The insulated versions are halogen-free and feature "EASY ENTRY" technology



Key Commercial Data

Packing unit	1 pc
Minimum order quantity	100 pc
Weight per Piece (excluding packing)	0.8 g
Custom tariff number	85369010
Country of origin	China

Technical data

Dimensions

Length (b)	22.5 mm
Width (a)	5.7 mm
Maximum stripping length	8 mm
Length of insulation sleeve (c)	11 mm
Inner dimension of the insulating collar (d)	4.5 mm
Inner diameter (f)	3.7 mm
Material thickness (g)	0.8 mm

General

Color	blue
Stripping length	8 mm
Components	Halogen-free

Fork-type cable lug - C-FCI 2,5/M3,5 - 3240038

Technical data

General

Flammability rating according to UL 94	V2
----------------------------------------	----

Standards and Regulations

Flammability rating according to UL 94	V2
----------------------------------------	----

Classifications

eCl@ss

eCl@ss 4.0	27060701
eCl@ss 4.1	27060701
eCl@ss 5.0	27400201
eCl@ss 5.1	27400201
eCl@ss 6.0	27400201
eCl@ss 7.0	27400201
eCl@ss 8.0	27400204

ETIM

ETIM 2.0	EC000005
ETIM 3.0	EC000005
ETIM 4.0	EC001052
ETIM 5.0	EC001052

UNSPSC

UNSPSC 6.01	27113201
UNSPSC 7.0901	27121703
UNSPSC 11	27121703
UNSPSC 12.01	27121703
UNSPSC 13.2	27121703

Approvals

Approvals

Approvals

EAC / EAC

Ex Approvals

Fork-type cable lug - C-FCI 2,5/M3,5 - 3240038

Approvals

Approvals submitted

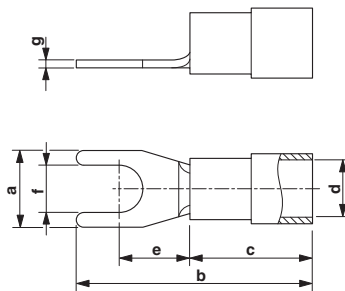
Approval details

EAC

EAC

Drawings

Dimensional drawing



Mouser Electronics

Authorized Distributor

Click to View Pricing, Inventory, Delivery & Lifecycle Information:

Phoenix Contact:

3240038