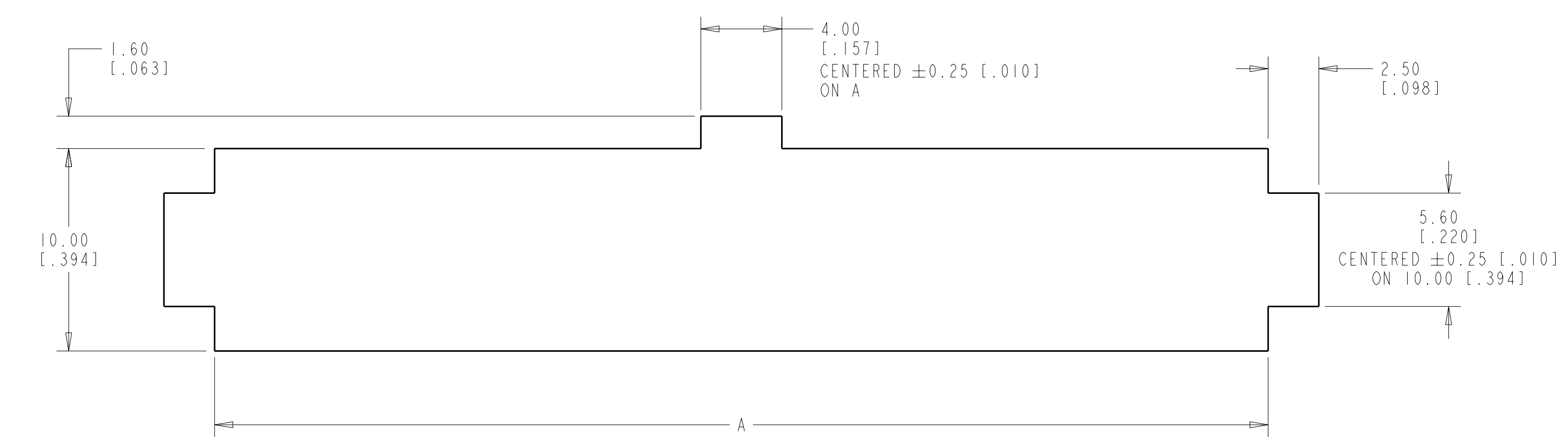
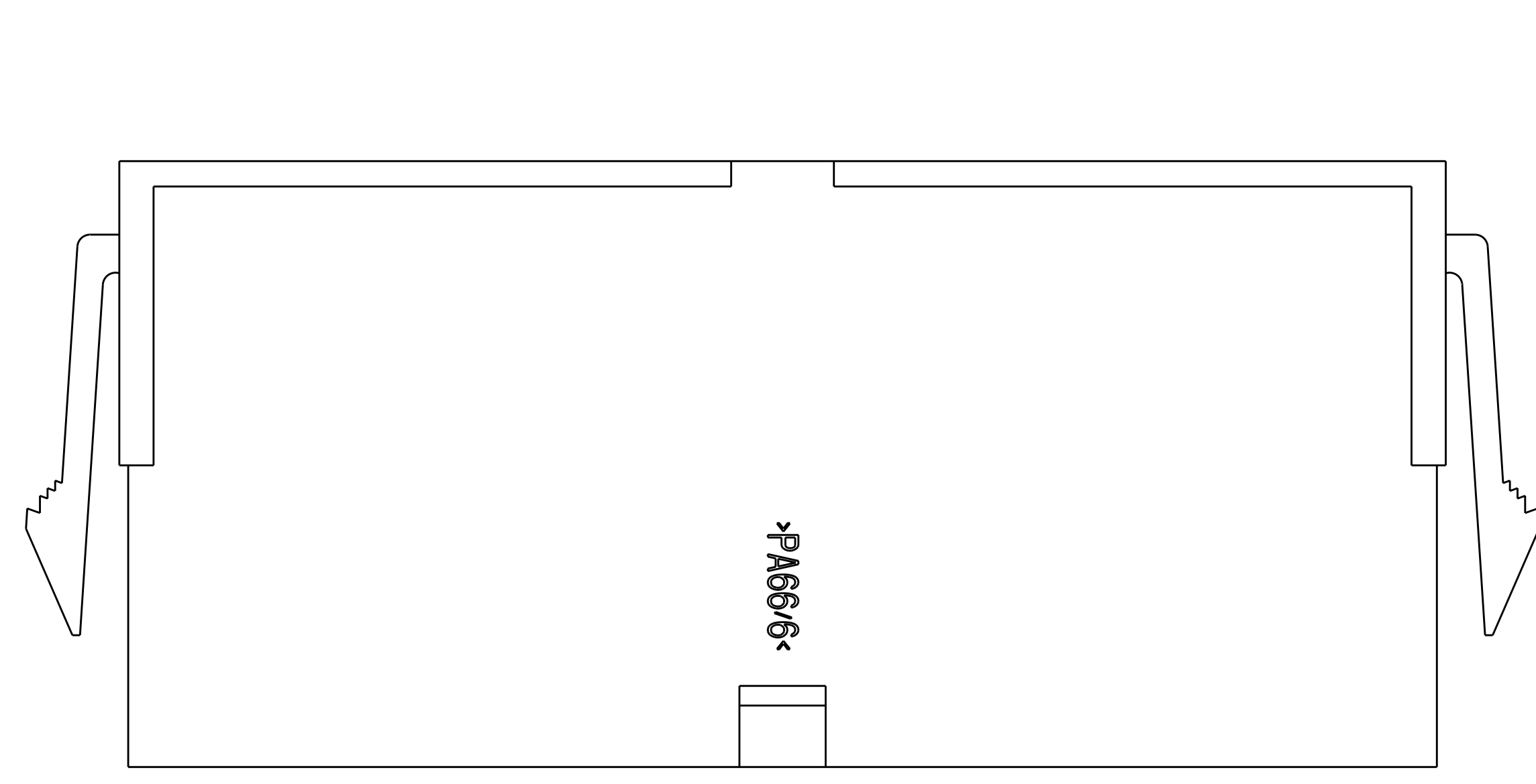
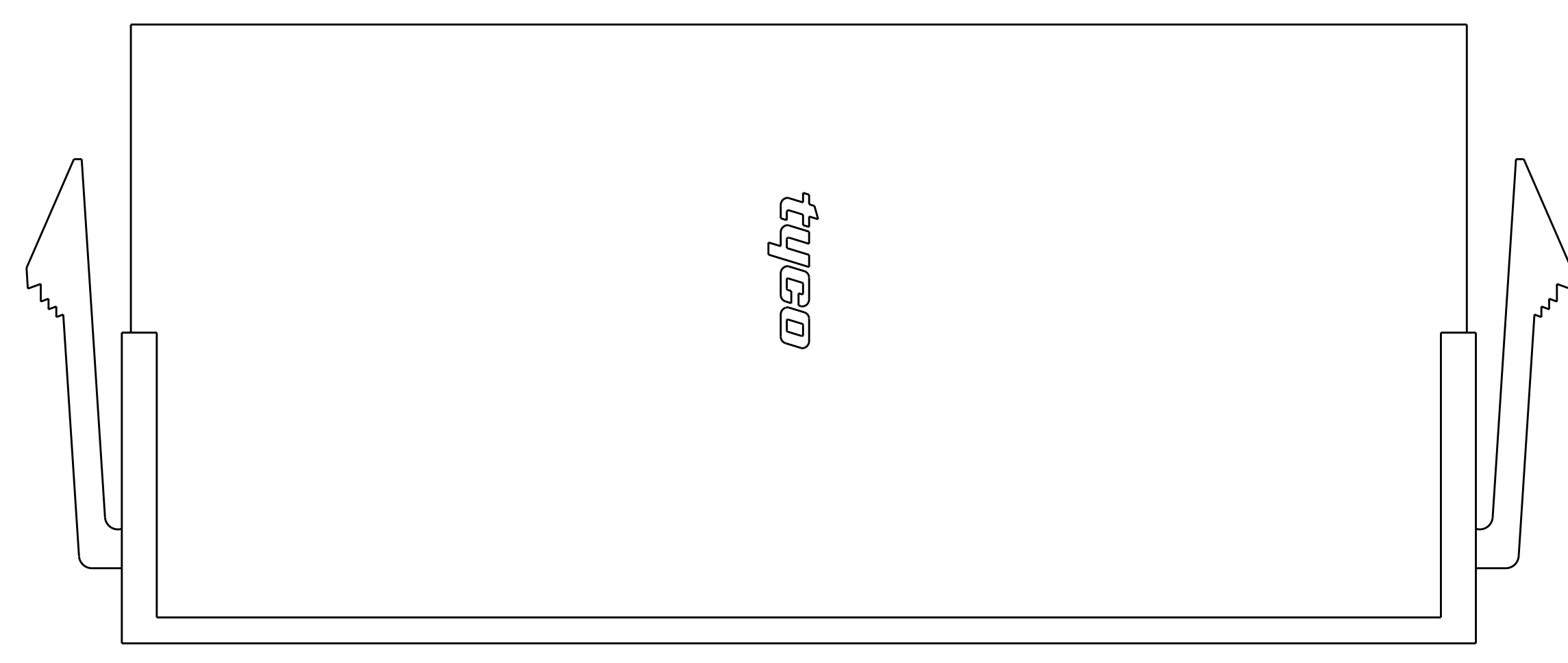
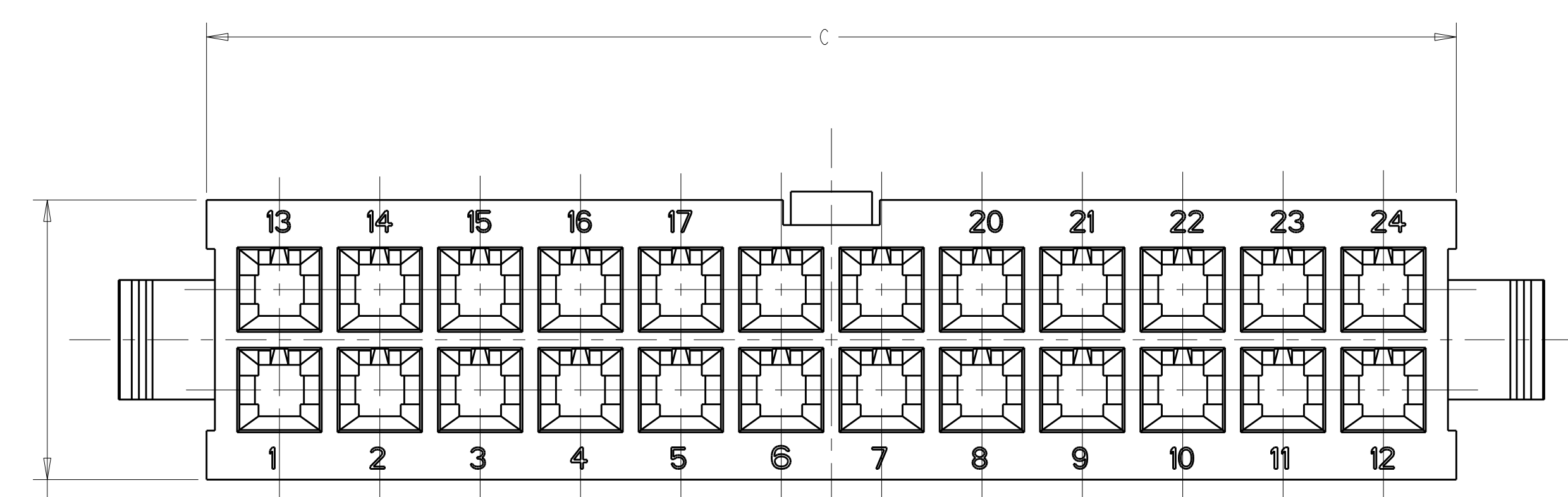
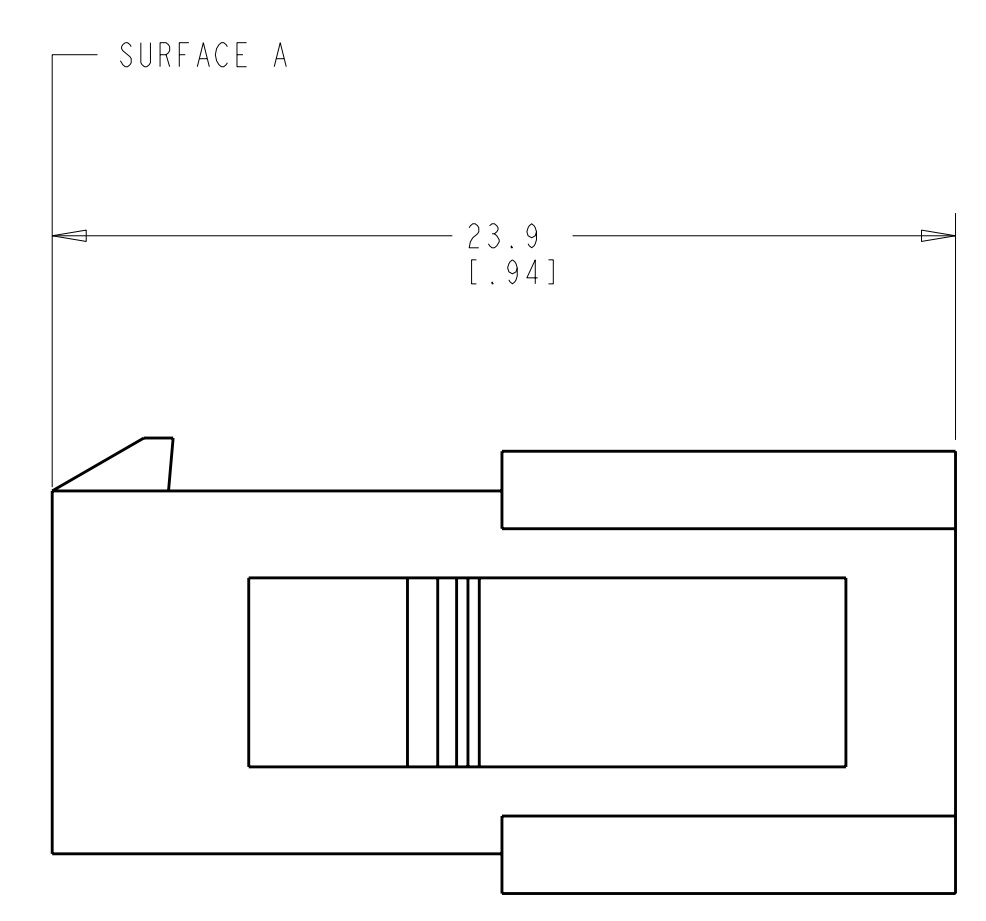
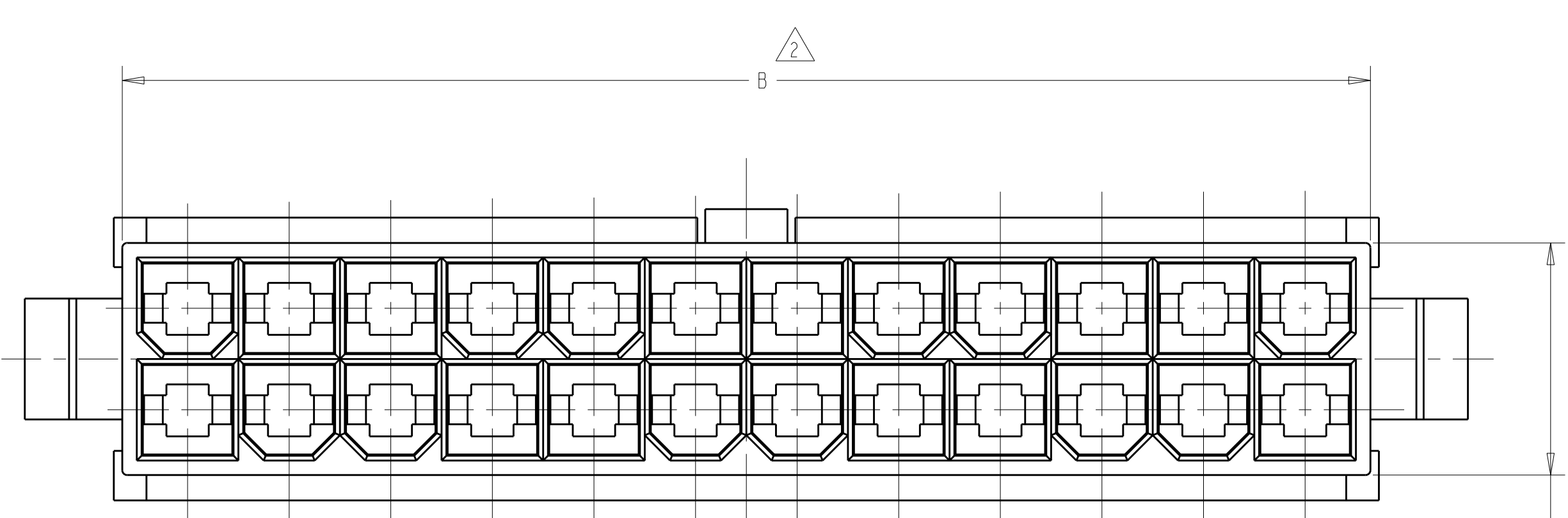


LOC	DIST	REVISIONS			
		REV	DATE	BY	APPV
CM	00	C	REVISED PER ECR-09-023963	11NOV2009	HMR KR



RECOMMENDED CUT OUT
 FOR 2.00 [.079] MAX. THICK PANEL



△ NYLON, UL94V-0, NATURAL (WHITE).

△ DIMENSION TO BE CHECKED AT SURFACE A.

3. DIMENSIONS IN BRACKETS ARE IN INCHES.

4. MALE CONTACTS MUST BE INSERTED SO THAT THE TOP OF THE WIRE AND INSULATION CRIMPS ARE FACING THE SIDE OF THE HOUSING WITH THE LOCKING LATCH.

5. RECOMMENDED MAX. PANEL THICKNESS 2.00 [.079].

6. PANEL MUST BE PUNCHED SO THAT THE HOUSING ENTERS THE PANEL IN THE SAME DIRECTION AS THE PUNCH.

C	B	A	NO. OF POSITIONS	PART NUMBER
52.3[2.059]	51.6[2.032]	52.00[2.047]	24	2-794598-4
48.1[1.894]	47.4[1.866]	47.80[1.882]	22	2-794598-2
43.9[1.728]	43.2[1.701]	43.60[1.717]	20	2-794598-0
39.7[1.563]	39[1.535]	39.40[1.551]	18	1-794598-8
35.5[1.398]	34.8[1.370]	35.20[1.386]	16	1-794598-6
31.3[1.232]	30.6[1.205]	31.00[1.220]	14	1-794598-4
27.1[1.067]	26.4[1.039]	26.80[1.055]	12	1-794598-2
22.9[.902]	22.2[.874]	22.60[.889]	10	1-794598-0
18.7[.736]	18[.709]	18.40[.724]	8	794598-8
14.5[.571]	13.8[.543]	14.20[.559]	6	794598-6
10.3[.406]	9.6[.378]	10.00[.394]	4	794598-4
6.1[.240]	5.4[.213]	5.80[.228]	2	794598-2

DIMENSIONS: mm [INCHES]		TOLERANCES UNLESS OTHERWISE SPECIFIED: 9 PLC ± .2 [.011] 3 PLC ± .1 [.005] 5 PLC ± .1 [.005] 4 PLC ± .1 [.005] ANGLES ± .5° FINISH -		DWN S. HOOVER 11-OCT-2004 CHK D. COLEY 11-OCT-2004 APVD D. COLEY 11-OCT-2004		AMP Incorporated Harrisburg, PA 17105-3608	
MATERIAL: △		METRIC		PRODUCT SPEC: - APPLICATION SPEC: - WEIGHT: -		NAME: PLUG, PANEL MOUNT, 2 TO 24 POSITION, AMP-DUACTM POWER CONNECTOR SIZE: A1 CAGE CODE: 00779 DRAWING NO: C-794598 SCALE: 4:1 SHEET 1 OF 1 REV C	

Mouser Electronics

Authorized Distributor

Click to View Pricing, Inventory, Delivery & Lifecycle Information:

[TE Connectivity:](#)

[794598-6](#)