

## Base strip - GMSTB 2,5/ 7-G - 1766068

Please be informed that the data shown in this PDF Document is generated from our Online Catalog. Please find the complete data in the user's documentation. Our General Terms of Use for Downloads are valid  
(<http://phoenixcontact.com/download>)

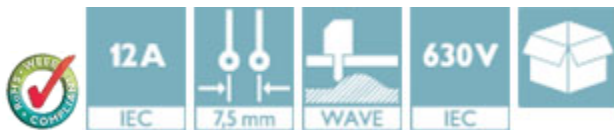
Header, Nominal current: 12 A, Rated voltage (III/2): 630 V, Number of positions: 7, Pitch: 7.5 mm, Color: green,  
Contact surface: Tin, Mounting: Wave soldering




The figure shows a 10-position version of the product

### Product Features

- Versions with threaded flange and 7.62 mm pitch
- Plug-in direction parallel to the PCB
- Headers with angled solder pins for 630 V applications (III/2)



### Key Commercial Data

|                                      |   |
|--------------------------------------|---|
| Packing unit                         | 1 pc  |
| Minimum order quantity               | 50 pc   |
| GTIN                                 | <br>4 017918 032081 |
| Weight per Piece (excluding packing) | 4.11 g  |
| Custom tariff number                 | 85366990  |
| Country of origin                    | Germany   |

### Technical data

#### Dimensions

|                       |         |
|-----------------------|---------|
| Length                | 12 mm   |
| Pitch                 | 7.50 mm |
| Dimension a           | 45 mm   |
| Width                 | 50.7 mm |
| Constructional height | 15 mm   |

## Base strip - GMSTB 2,5/ 7-G - 1766068

### Technical data

#### Dimensions

|                          |          |
|--------------------------|----------|
| Height                   | 18.5 mm  |
| Length of the solder pin | 3.5 mm   |
| Pin dimensions           | 1 x 1 mm |
| Hole diameter            | 1.4 mm   |

#### General

|  |                |
|--|----------------|
| Range of articles                      | GMSTB 2,5/..-G |
| Insulating material group              | I              |
| Rated surge voltage (III/3)            | 6 kV           |
| Rated surge voltage (III/2)            | 6 kV           |
| Rated surge voltage (II/2)             | 6 kV           |
| Rated voltage (III/3)                  | 400 V          |
| Rated voltage (III/2)                  | 630 V          |
| Rated voltage (II/2)                   | 630 V          |
| Connection in acc. with standard       | EN-VDE         |
| Nominal current $I_N$                  | 12 A           |
| Maximum load current                   | 12 A           |
| Insulating material                    | PA             |
| Flammability rating according to UL 94 | V0             |
| Color                                  | green          |
| Number of positions                    | 7              |

#### Standards and Regulations

|  |        |
|--|--------|
| Connection in acc. with standard       | EN-VDE |
|  | CSA    |
| Flammability rating according to UL 94 | V0     |

### Classifications

#### eCl@ss

|            |          |
|------------|----------|
| eCl@ss 4.0 | 272607xx |
| eCl@ss 4.1 | 27260701 |
| eCl@ss 5.0 | 27260701 |
| eCl@ss 5.1 | 27260701 |
| eCl@ss 6.0 | 27260704 |
| eCl@ss 7.0 | 27440402 |
| eCl@ss 8.0 | 27440402 |
| eCl@ss 9.0 | 27440402 |

## Base strip - GMSTB 2,5/ 7-G - 1766068

### Classifications

#### ETIM

|          |          |
|----------|----------|
| ETIM 3.0 | EC001121 |
| ETIM 4.0 | EC002637 |
| ETIM 5.0 | EC002637 |

#### UNSPSC

|               |          |
|---------------|----------|
| UNSPSC 6.01   | 30211810 |
| UNSPSC 7.0901 | 39121409 |
| UNSPSC 11     | 39121409 |
| UNSPSC 12.01  | 39121409 |
| UNSPSC 13.2   | 39121409 |

### Approvals

#### Approvals


#### Approvals


CSA / UL Recognized / VDE Gutachten mit Fertigungsüberwachung / cUL Recognized / IECEx CB Scheme / EAC / EAC / cULus Recognized

#### Ex Approvals

#### Approvals submitted

#### Approval details


|   |       |       |
|---|-------|-------|
| CSA  |       |       |
|   | B     | D     |
| Nominal current I <sub>N</sub>  | 10 A  | 10 A  |
| Nominal voltage U <sub>N</sub>  | 300 V | 300 V |


|   |      |      |
|---|------|------|
| UL Recognized  |      |      |
|   | B    | D    |
| Nominal current I <sub>N</sub>  | 15 A | 10 A |


## Base strip - GMSTB 2,5/ 7-G - 1766068

### Approvals

|                    | B     | D     |
|--------------------|-------|-------|
| Nominal voltage UN | 300 V | 300 V |


|   |       |
|---|-------|
| VDE Gutachten mit Fertigungsüberwachung  |       |
| Nominal current IN  | 12 A  |
| Nominal voltage UN  | 400 V |

| cUL Recognized  |       |       |
|--|-------|-------|
|  | B     | D     |
| Nominal current IN   | 15 A  | 10 A  |
| Nominal voltage UN   | 300 V | 300 V |

|   |       |
|---|-------|
| IECEE CB Scheme  |       |
| Nominal current IN  | 12 A  |
| Nominal voltage UN  | 400 V |

|     |
|-----|
| EAC |
|-----|

|     |
|-----|
| EAC |
|-----|

|  |
|--|
| cULus Recognized  |
|--|

### Accessories

Accessories

Coding element

## Base strip - GMSTB 2,5/ 7-G - 1766068

### Accessories

Coding star - CR-MSTB - 1734401



Coding section, inserted into the recess in the header or the inverted plug, red insulating material

---

### Filler plug

Accessories - MSTB-BL - 1755477



Keying cap, for forming sections, plugs onto header pin, green insulating material

---

### Flange

Accessories - MSTB-BF - 1759981



Mounting flange, for fixing both ends of the header onto the PCB, green insulating material, with M 2 x 14 screws and nuts.

---

### Labeled terminal marker

Marker card - SK 7,5/3,8:FORTL.ZAHLEN - 0804455



Marker card, Card, white, labeled, Horizontal: Consecutive numbers 1 - 10, 11 - 20, etc. up to 91 - 100, Mounting type: Adhesive, for terminal block width: 7.5 mm, Lettering field: 7.5 x 3.8 mm

---

### Additional products

## Base strip - GMSTB 2,5/ 7-G - 1766068

### Accessories

#### Printed-circuit board connector - GMVSTBR 2,5/ 7-ST - 1737754



Plug component, Nominal current: 12 A, Rated voltage (III/2): 630 V, Number of positions: 7, Pitch: 7.5 mm, Connection method: Screw connection with tension sleeve, Color: green, Contact surface: Tin

---

#### Printed-circuit board connector - GMVSTBW 2,5/ 7-ST - 1737864



Plug component, Nominal current: 12 A, Rated voltage (III/2): 630 V, Number of positions: 7, Pitch: 7.5 mm, Connection method: Screw connection with tension sleeve, Color: green, Contact surface: Tin

---

#### Printed-circuit board connector - GMSTB 2,5/ 7-ST - 1766932



Plug component, Nominal current: 12 A, Rated voltage (III/2): 630 V, Number of positions: 7, Pitch: 7.5 mm, Connection method: Screw connection with tension sleeve, Color: green, Contact surface: Tin

---

#### Printed-circuit board connector - GFKC 2,5/ 7-ST-7,5 - 1939468



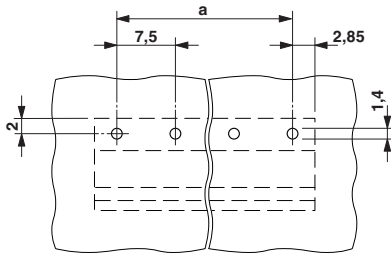
Plug component, Nominal current: 12 A, Rated voltage (III/2): 630 V, Number of positions: 7, Pitch: 7.5 mm, Connection method: Push-in spring connection, Color: green, Contact surface: Tin, COMBICON connectors may only be activated under no load conditions. If for operating reasons small loads must be switched, experimental values are available upon request.

---

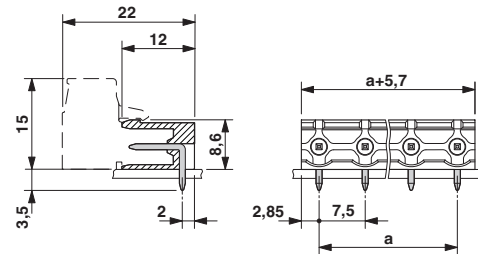
### Drawings

## Base strip - GMSTB 2,5/ 7-G - 1766068

Drilling diagram



Dimensional drawing



# Mouser Electronics

Authorized Distributor

Click to View Pricing, Inventory, Delivery & Lifecycle Information:

Phoenix Contact:

1766068