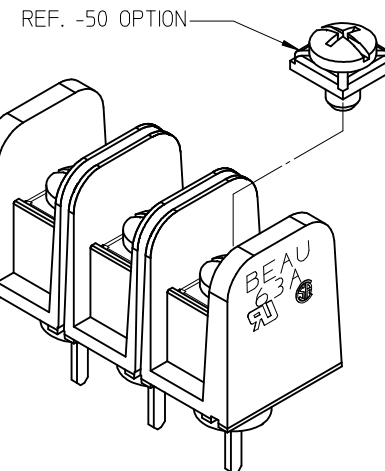
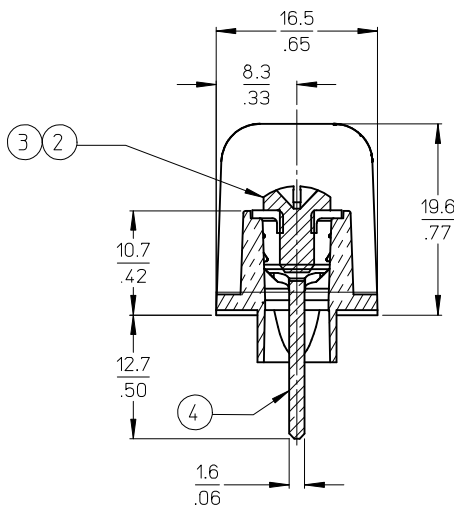


- NOTES:
1. MATERIAL: SEE TABLE
  2. FINISHES: SEE TABLE
  3. PRODUCT SPECIFICATION: NOT REQUIRED
  4. PACKAGING: NOT REQUIRED
  5. MATES WITH: NONE
  6. \*XX\* REFERS TO QTY. OF CIRCUITS
  7. ROHS COMPLIANT



SECTION Z-Z

|      |      |  |                 |                    |
|------|------|--|-----------------|--------------------|
| 4    | XX   | TERMINAL, WIRE WRAP, LONG, #6-32,      | BRASS           | TIN PLATE          |
| 3    | XX   | SCREW/WSHR #6-32X.250 PAN, PH-SL (-50) | STEEL           | ZN, CLEAR CHROMATE |
| 2    | XX   | SCREW #6-32X.250 BHD, PH-SL (STD.)     | STEEL           | ZN, CLEAR CHROMATE |
| 1    | 1    | BARRIER TERMINAL STRIP                 | POLYESTER (PBT) | BLACK              |
| ITEM | QTY. | DESCRIPTION                            | MATERIAL        | FINISH             |

UPDATE MAT. DESCRIP.  
EC NO: WNA2009-0085  
DRWN: JENC INAS 2008/11/25  
CHKD: CYORK 2008/12/15  
APPR: JMACNEIL 2008/12/15

QUALITY SYMBOLS  
▽=0  
▽=0

GENERAL TOLERANCES (UNLESS SPECIFIED)

|          | mm     | INCH    |
|----------|--------|---------|
| 4 PLACES | ± .005 | ± .0005 |
| 3 PLACES | ± .01  | ± .001  |
| 2 PLACES | ± .02  | ± .002  |
| 1 PLACE  | ± .03  | ± .003  |

ANGULAR ± 2 °

DRAFT WHERE APPLICABLE  
MUST REMAIN  
WITHIN DIMENSIONS

DIMENSION STYLE  
MM/IN

DRAWN BY DATE  
R. STONE 2003/03/25

CHECKED BY DATE  
R. KEMP 2003/03/27

APPROVED BY DATE  
P. WALTZ 2003/03/28

MATERIAL NO.  
SEE CHART

SIZE  
B

SCALE  
2:1

DESIGN UNITS  
INCH

THIRD ANGLE PROJECTION

TITLE  
11.13/.438" BTS, 600V  
PC TAIL W/STD TURRET &  
NO MTG ENDS (63A3XX-C)

MOLEX INCORPORATED

DOCUMENT NO.  
SD-38630-006

SHEET NO.  
1 OF 1

# Mouser Electronics

Authorized Distributor

Click to View Pricing, Inventory, Delivery & Lifecycle Information:

Molex:

38630-5408