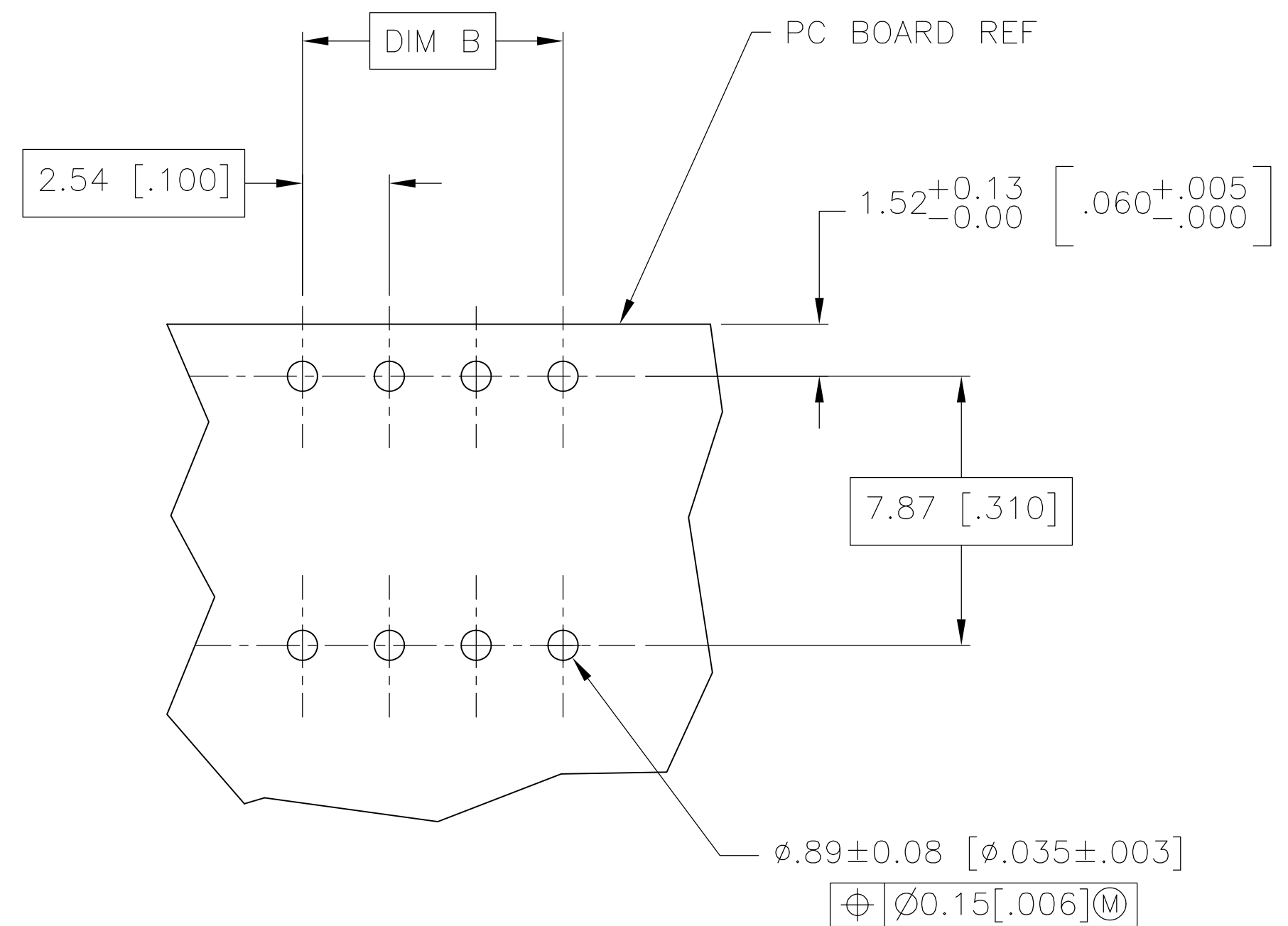
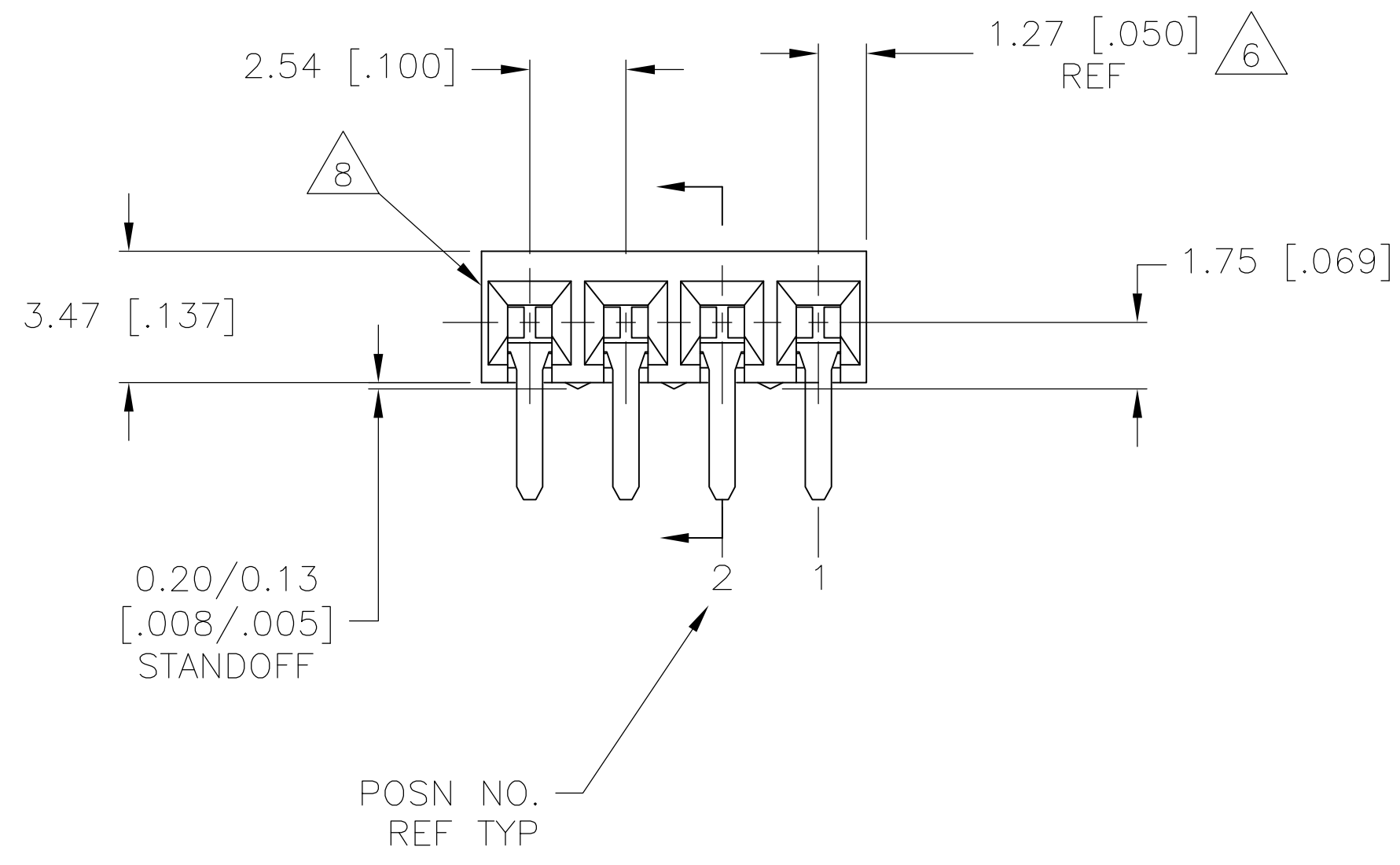
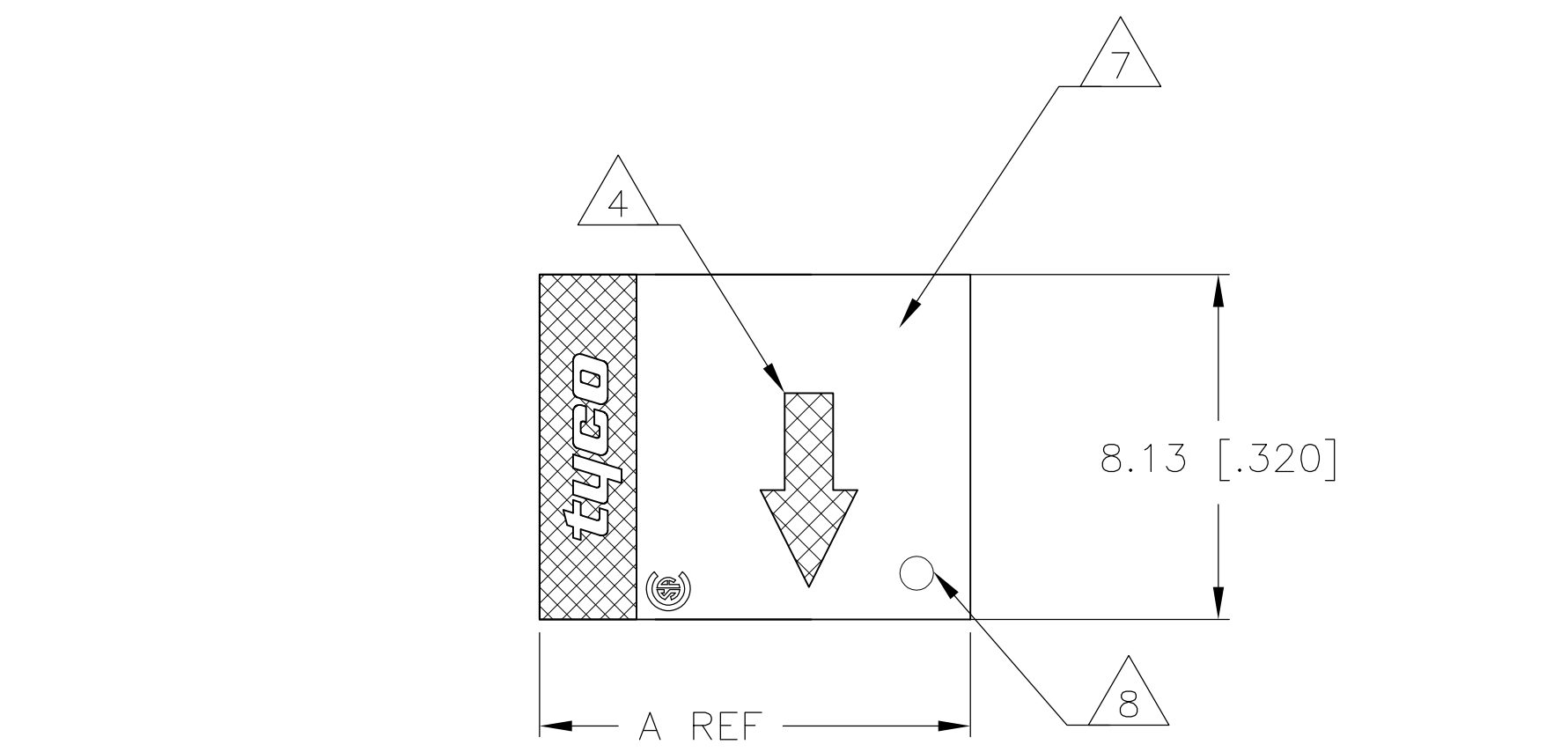


D

C

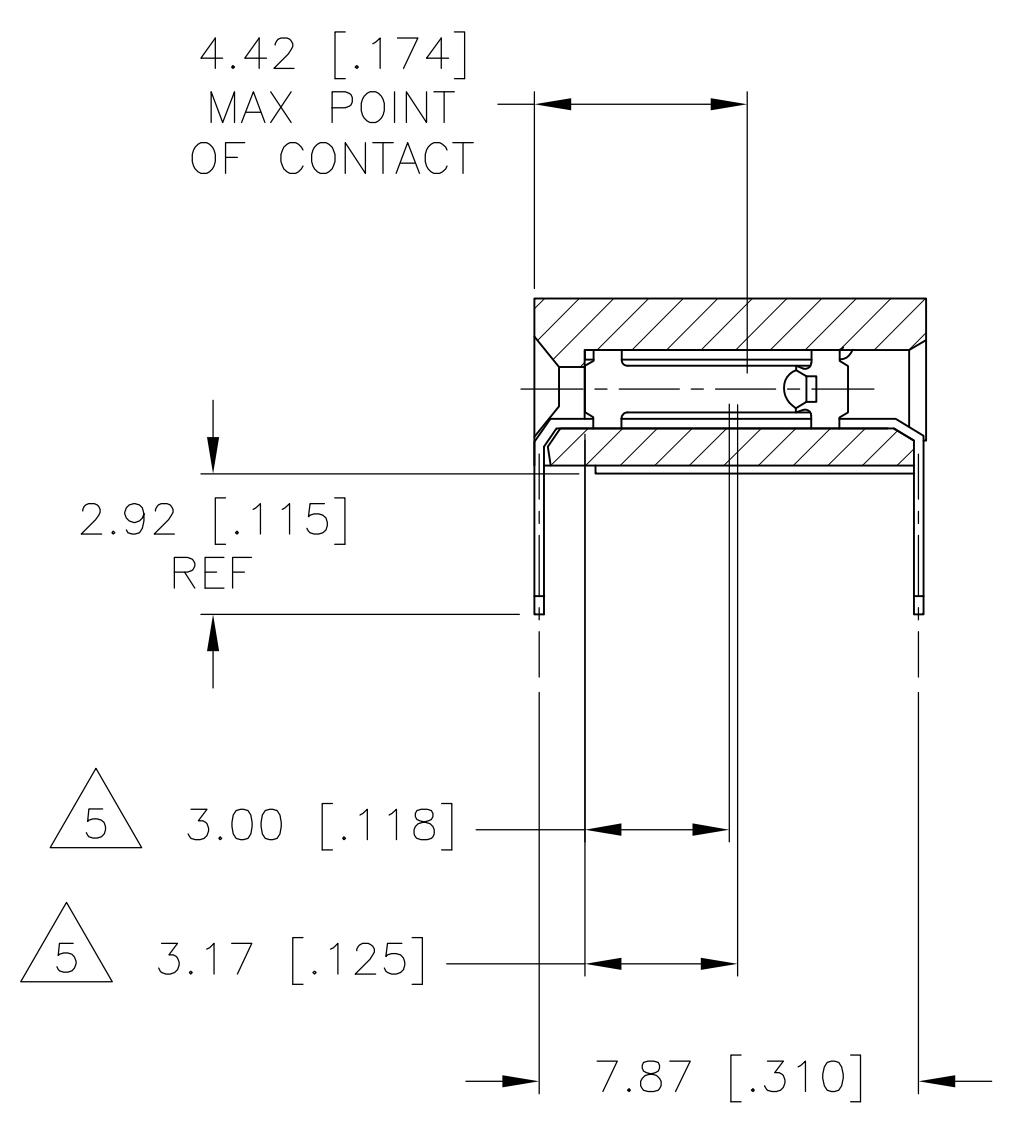
B





A



RECOMMENDED PC BOARD LAYOUT

- 1 HOUSING MATERIAL: GLASS FILLED POLYESTER, COLOR- BLACK
- 2 CONTACT MATERIAL: PHOSPHOR BRONZE
- 3 CONTACT FINISH: 0.00025[.000010] THK DUPLEX PLATED GOLD ON CONTACT AREA, 0.00127[.000050] MIN THK BRIGHT TIN-LEAD OR TIN ON SOLDERLEADS, ALL OVER 0.00127[.000050] NICKEL
- 4 MOLDED IN ARROW DESIGNATES THE MATING FACE OF THE CONNECTOR
- 5 POINT OF MEASUREMENT FOR PLATING THICKNESS OF CONTACT AREA
- 6 DIMENSIONS PERTAIN TO HOUSING CAVITY CENTERLINES
- 7 DATE CODE AND PART NUMBER MARKED IN APPROXIMATE LOCATION SHOWN.
- 8 PIN #1 INDICATOR, WHITE DOT



		17.78[.700]		20.32[.800]		8		1977215-7									
		B		A		NO. OF POSN		ASSEMBLY PART NUMBER									
THIS DRAWING IS A CONTROLLED DOCUMENT.				DWN M. BINNER CHK J. OLSON APVD J. OLSON		01NOV07 01NOV07 01NOV07		Tyco Electronics Corporation Harrisburg, PA 17105									
DIMENSIONS: MM		TOLERANCES, UNLESS OTHERWISE SPECIFIED:		PRODUCT SPEC		NAME											
		0 PLC ± - 1 PLC ± - 2 PLC ± - 3 PLC ± 0.13[.005] 4 PLC ± - ANGLES ± ± -		— — —		AMPMODU MOD II RECEPTACLE ASSEMBLY, HORIZONTAL, .100 CL, SINGLE ROW, CLOSED-ENTRY, SHORT POINT OF CONTACT, END-TO-END STACKABLE											
MATERIAL		FINISH		WEIGHT		SIZE		CAGE CODE		DRAWING NO		RESTRICTED TO					
 				—		A1		00779		C=1977215		—					
CUSTOMER DRAWING						SCALE		5:1		SHEET		1 of 1		REV		A	

Mouser Electronics

Authorized Distributor

Click to View Pricing, Inventory, Delivery & Lifecycle Information:

[TE Connectivity:](#)

[1977215-7](#)