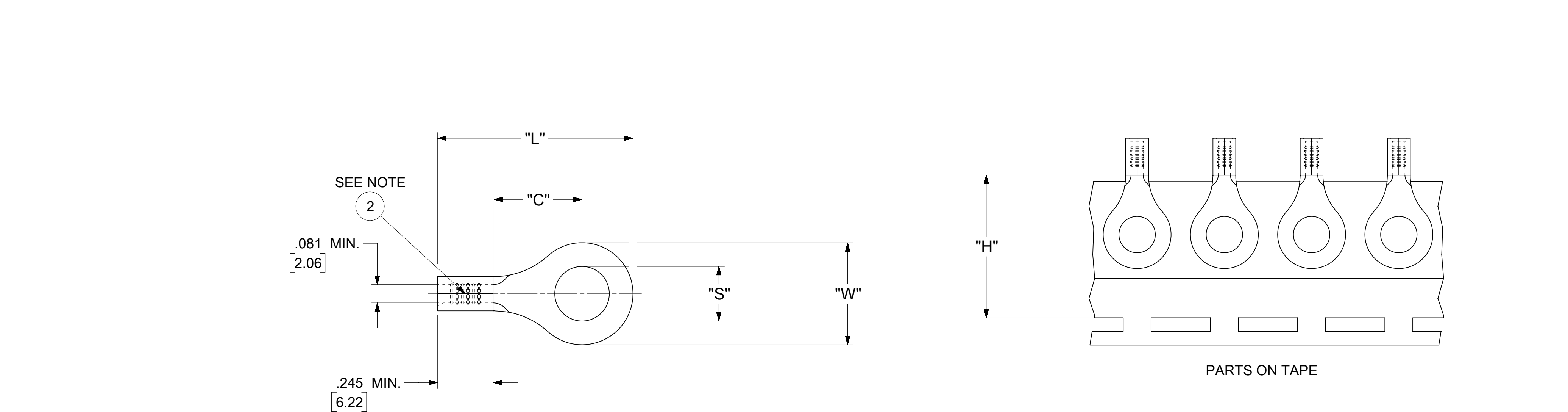


12		11		10		9		8		7		6		5		4		3		2		1	
LOOSE PIECE		TAPE MOUNTED		SPECIFICATIONS																			
MATERIAL NUMBER	ENGINEERING NUMBER	MATERIAL NUMBER	ENGINEERING NUMBER	STUD SIZE	"S" ±.005 [0.13]	"W" ±.010 [0.25]	"C" MIN.	"L" MAX.	"H"	STOCK ±.001 [0.025] THICKNESS													
190560055	B-318-14	---	---	14	.265 [6.73]	.534 [13.56]	.554 [14.07]	1.115 [28.32]	---	.031 [0.79]													
190560057	B-318-38	---	---	38	.390 [9.91]																		
190560059	B-318-56	---	---	56	.328 [8.33]																		
190560063	B-323-04	---	---	4	.119 [3.02]	.250 [6.35]	.209 [5.31]	.639 [16.23]	.980 [24.89]	.031 [0.79]													
190560065	B-323-06	190560067	B-323-06T	6	.146 [3.71]																		
190560068	B-323-08	---	---	8	.173 [4.39]																		
190560070	B-325-10	---	---	10	.198 [5.03]	.467 [11.86]	.388 [9.86]	.916 [23.27]	.980 [24.89]	.031 [0.79]													
190560072	B-325-14	190560074	B-325-14T	14	.265 [6.73]																		
190560075	B-325-56	---	---	56	.328 [8.33]																		
190560102	B-337-04	---	---	4	.119 [3.02]	.312 [7.92]	.285 [7.24]	.730 [18.54]	.980 [24.89]	.031 [0.79]													
190560104	B-337-06	---	---	6	.146 [3.71]																		
190560106	B-337-08	190560108	B-337-08T	8	.173 [4.39]																		
190560109	B-337-10	190560111	B-337-10T	10	.198 [5.03]	.342 [8.69]	.310 [7.87]	.775 [19.69]	---	.031 [0.79]													
190560114	B-339-06	---	---	6	.146 [3.71]																		
190560116	B-339-08	---	---	8	.173 [4.39]																		
190560118	B-339-10	---	---	10	.198 [5.03]																		



NOTES:

1. MATERIAL: COPPER

PLATING: ELECTRO-TIN (.0003 MIN).

2. BRAZED SEAM

3. WIRE SIZE: 16-14 AWG

1.0-2.5 MM²

4. ALL DIMENSIONS IN INCHES/[MM].

5. PARTS ARE ROHS COMPLIANT.

6. DIMS. SHOWN ARE FOR REFERENCE ONLY.

DOCUMENT STATUS	P1	RELEASE DATE	2019/08/05	20:29:44
-----------------	----	--------------	------------	----------

12

11

10

9

8

7

6

5

4

3

2

1

SYMBOLS	THIS DRAWING CONTAINS INFORMATION THAT IS PROPRIETARY TO MOLEX ELECTRONIC TECHNOLOGIES, LLC AND SHOULD NOT BE USED WITHOUT WRITTEN PERMISSION										
	DIMENSION UNITS		SCALE		CURRENT REV DESC: MIGRATION TO ECTR/NX						
	INCH/MM		NTS								
	GENERAL TOLERANCES (UNLESS SPECIFIED)				EC NO: 620952 DRWN: ABENJAMINLW 2019/06/13 CHK'D: GROJAS01 2019/07/19 APPR: JMACNEIL 2019/08/05 INITIAL REVISION: DRWN: JJ 1984/11/28 APPR: JMACNEIL 2019/08/05						
			MM	INCH							
4 PLACES		±	---	±							---
3 PLACES		±	---	±							.005
2 PLACES		±	0.13	±	.01						
1 PLACE		±	0.25	±	---						
0 PLACES		±	---	±	---						
ANGULAR TOL		± 0.5 °		THIRD ANGLE PROJECTION DRAWING SERIES C-SIZE 19056							
DRAFT WHERE APPLICABLE MUST REMAIN WITHIN DIMENSIONS											
				MATERIAL NUMBER SEE TABLE							
				CUSTOMER GENERAL MARKET							
				SHEET NUMBER 1 OF 1							

NOTES:

① MAT'L: COPPER (STOCK TKN $\frac{.031}{.79}$)
PLATING: ELECTRO-TIN (.0003 MIN.)

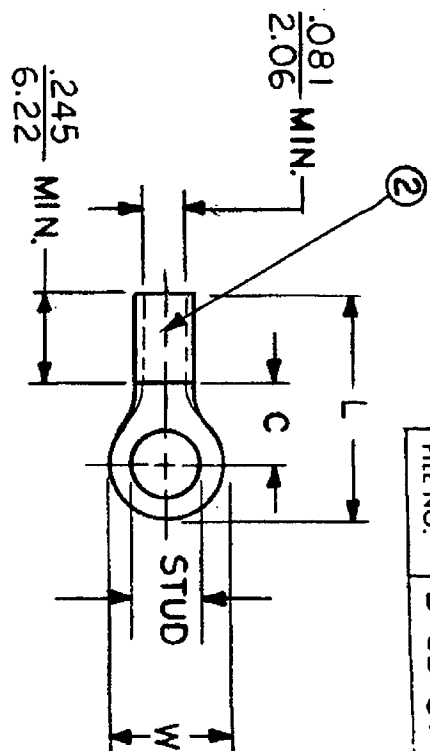
② BRAZED SEAM

STUD SIZES: ($\pm .005$)

02 = .094
04 = .119
06 = .146
08 = .173
10 = .198
14 = .265
56 = .328
38 = .390

"UL" LISTING #E32244
"CSA" LISTING #18689

ALL DIMENSIONS = INCHES
M M



FILE NO.

B-CD-301-01

WIRE SIZE: 16-14 AWG
1.0-2.5 MM²

PART NUMBER	"W" $\pm .010$	"C" MIN.	"L" MAX.	AVAILABLE STUD SIZES
B-318-	$\frac{.534}{13.56}$	$\frac{.554}{14.07}$	$\frac{1.115}{28.32}$	10, 14, 56, 38
B-323-	$\frac{.250}{6.35}$	$\frac{.209}{5.31}$	$\frac{.639}{16.23}$	02, 04, 06, 08
B-325-	$\frac{.467}{11.86}$	$\frac{.388}{9.86}$	$\frac{.916}{23.27}$	10, 14, 56
B-337-	$\frac{.312}{7.92}$	$\frac{.285}{7.24}$	$\frac{.730}{18.54}$	04, 06, 08, 10
B-339-	$\frac{.342}{8.69}$	$\frac{.310}{7.87}$	$\frac{.775}{19.69}$	04, 06, 08, 10
DIMENSIONAL TOLERANCES UNLESS OTHERWISE SPECIFIED REFERENCE SCALE: NTS DATE 11/28/84 DRAWN BY: JJ CHKD. BY: GZ APPRD. BY: TITLE: RING TONGUE TERMINAL VERSAKRIMP 300-SERIES DWG. NO. A CUSTOMER DWG.				

ETC
INCORPORATED
molex

Mouser Electronics

Authorized Distributor

Click to View Pricing, Inventory, Delivery & Lifecycle Information:

Molex:

19056-0219