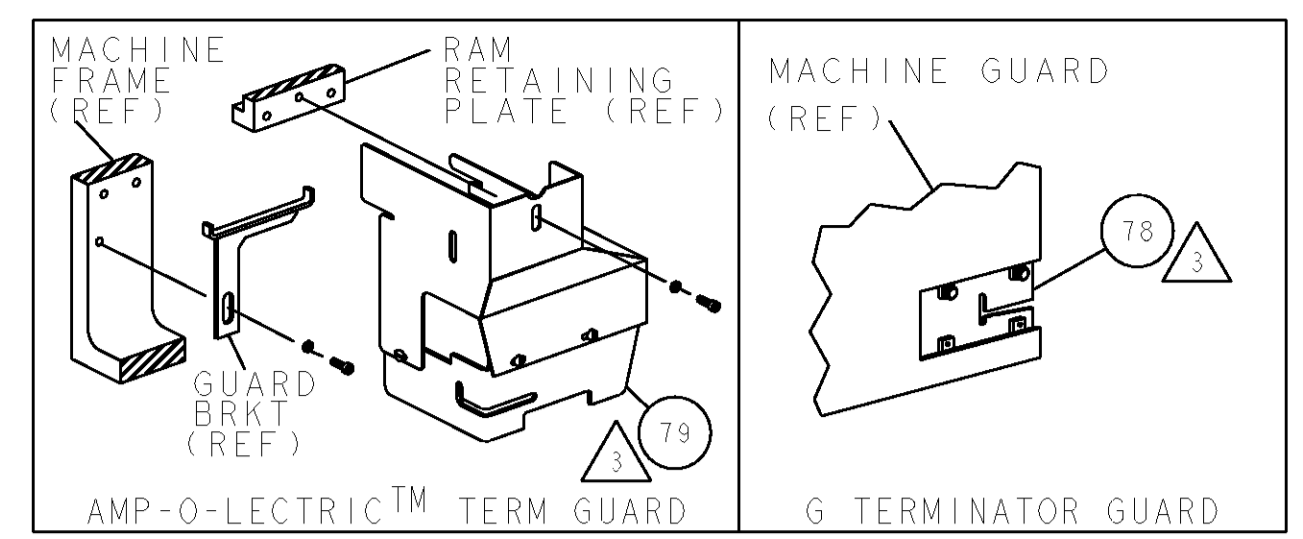


THIS DRAWING IS UNPUBLISHED. RELEASED FOR PUBLICATION

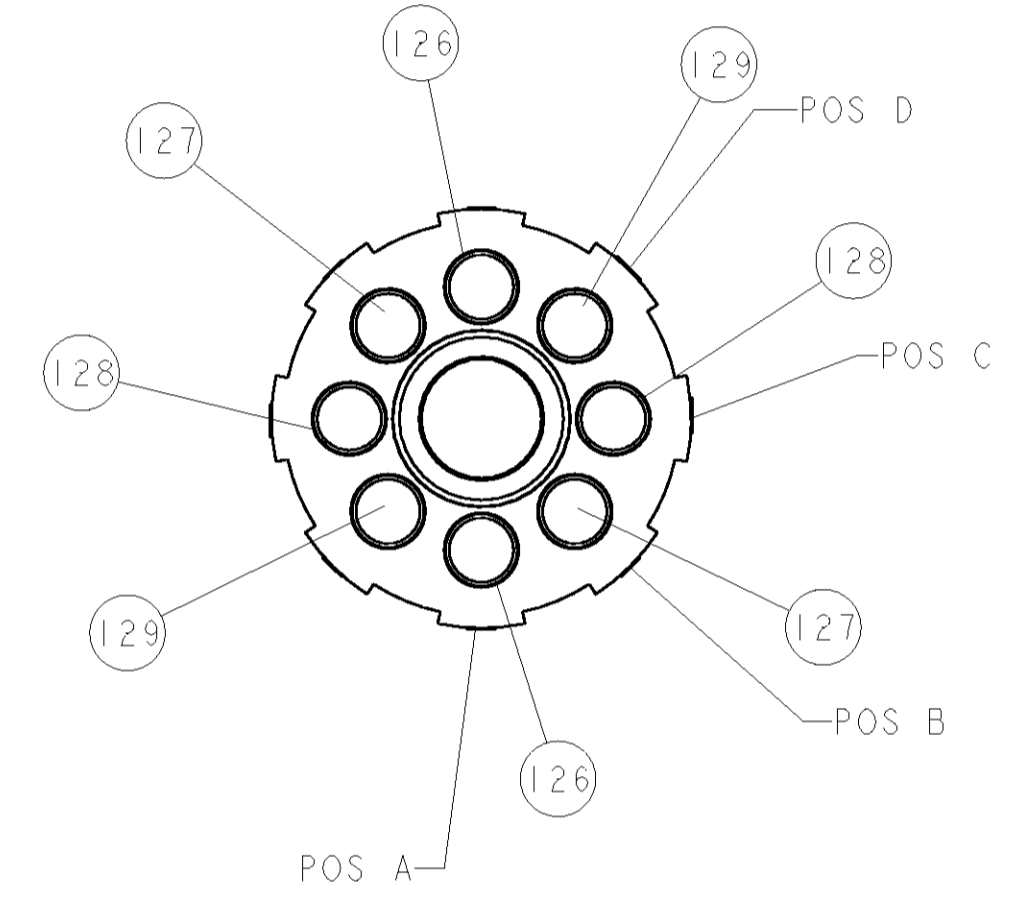
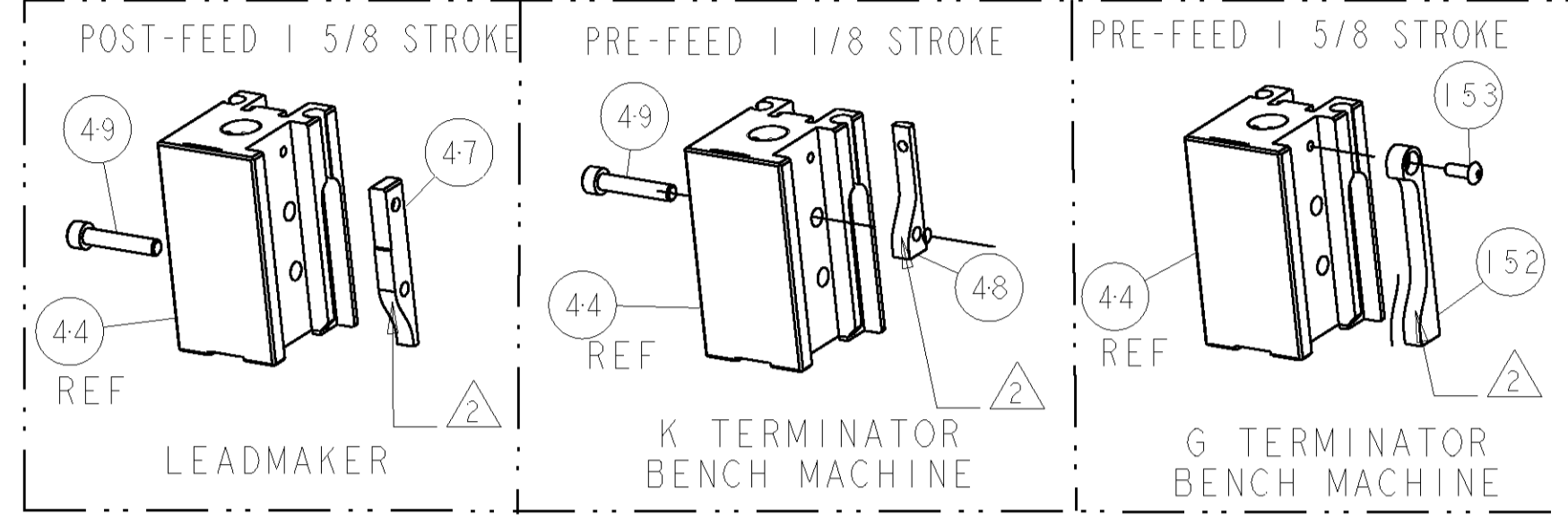
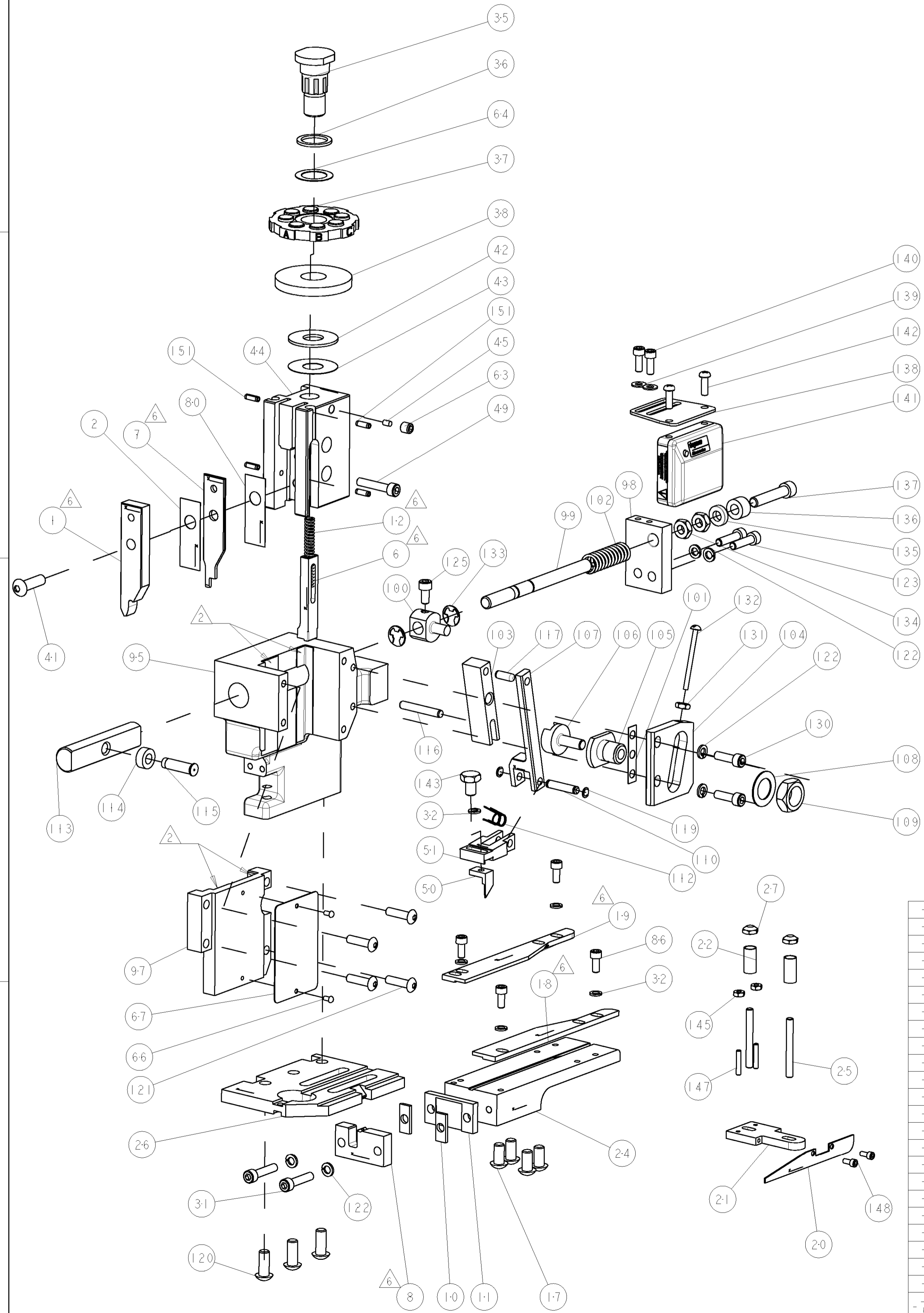
PART NUMBER	REV	FIRST USED	POWER UNIT	FEED TYPE
1852174-1	A	122500-1	LEADMAKER	POST FEED
1852174-2	A	565435-5	BENCH MODEL K	PRE FEED
1852131-3	A	354500-1	BENCH MODEL G	PRE FEED
7-1852174-7	A	-	SPARE PARTS	-



TERMINAL NAME: MALE FLAG

TYCO PN	ARK-LES PN	ARK-LES TERMINAL - AMP CRIMP SPECS
1572885	3000M 3C/	
		CRIMP HEIGHT
		WIRE SIZE
		CRIMP SIZE
		CRIMP TYPE
		CRIMP RANGE
		WIRE
		INSUL
		FEED
		APPL INSTRUCTIONS
		SET UP GAGE

LOC	DIST	REV	DESCRIPTION	DATE	DRN	APPR
A	66		RELEASED	21APR2006	RK	GB



- 1 RECOMMENDED SPARE PARTS
- 2 GREASE LIGHTLY
- 3 GUARD MUST BE IN PLACE WHEN OPERATING APPLICATOR IN A BENCH MACHINE
- 4 MAX CMA 4100; (WIRE STRAND COUNT GREATER THAN 19 NOT RECOMMENDED).
- 5 12 AWG NOT RECOMMENDED; WIRE EXCEEDS MAX CMA OF TERMINAL; WIRE STRANDING WILL OCCUR.
- 6 ITEMS 1, 6, 7, 8, 12, 18, & 19 MUST BE REPOSITIONED AND REALIGNED FOR LEFT HAND FEED TERMINAL.

QTY	REV	DESCRIPTION	ITEM NO				
-	1	1-21002-7 SCR, BTN SKT CAP 6-32 X .375	153				
-	1	453991-1 CAM, PRE FEED, 1/8	152				
-	4	4-21028-9 PIN, SLOTTED SPRING .125 X .375	151				
-	2	2-21000-3 SCR, SKT HD CAP 4-40 X .250	148				
-	2	2-21006-6 SCR, SET, CUP POINT 4-40 X .625	147				
-	2	21018-4 NUT, HEX, REG 4-40	145				
-	1	1-22603-1 SCR, HEX HD CAP, IN	143				
-	2	994991-5 SCREW, OVL HD, M4X12	142				
-	1	1804300-1 ASSEMBLY, APPLICATOR COUNTER	141				
-	2	2-21000-9 SCR, SKT HD CAP 8-32 X .438	140				
-	2	18028-2 WASHER, FLAT, REG M4	139				
-	1	1804303-1 BRACKET, COUNTER MOUNTING	138				
-	1	3-21081-3 SHCS, 1/4-20 X 1.25	137				
-	1	1804299-1 SPACER, MAGNET	136				
-	1	1804310-1 MAGNET, RING	135				
-	2	22593-1 NUT, HEX, JAM .SS	134				
-	2	2-354779-2 RING, RETAIN, EXTERN, 5/16 E-RING	133				
-	1	3-21016-2 SCREW, MACHINE, SLOTTED ROUND HEAD	132				
-	1	21068-5 NUT, HEX, REG 6-32	131				
-	2	2-21000-6 SCR, SKT HD CAP 10-32 X .625	130				
-	2	2-354779-2 PIN, WIRE DISC, .3100	129				
-	2	354779-2 PIN, WIRE DISC, .3000	128				
-	2	7-354778-9 PIN, WIRE DISC, .2890	127				
-77	-3	-2	-1	U/M	PART NO	DESCRIPTION	ITEM NO

-	2	2	2	-	5-354778-1	PIN, WIRE DISC, .2750	126
-	1	1	1	-	3-21000-4	SCR, SKT HD CAP 10-32 X .375	125
-	2	2	2	-	3-21000-7	SCR, SKT HD CAP 10-32 X .750	123
-	4	4	4	-	21024-5	WASHER, SPRG LOCK, REG NO 10	122
-	4	4	4	-	2-21002-9	SCR, BTN SKT HD CAP 10-32 X .750	121
-	3	3	3	-	2-22733-8	SCR, BHSC, SELF-LOCKING, 1/4-20 X .625	120
-	2	2	2	-	21045-3	RING, RETAIN, EXTERN, 3/16 CRESCENT	119
-	1	1	1	-	1-21030-1	PIN, DOWEL .1875 X .500	117
-	1	1	1	-	1-21030-6	PIN, DOWEL .1875 X 1.250	116
-	1	1	1	-	240659-3	PIN, CAM ROLLER	115
-	1	1	1	-	240658-1	ROLLER-CAM	114
-	1	1	1	-	454398-1	ROD, FEED	113
-	1	1	1	-	691499-1	SPRING-FEED FINGER	112
-	1	1	1	-	240624-1	PIN, FEED FINGER	110
-	1	1	1	-	22594-8	NUT, HEX, JAM	109
-	1	1	1	-	458109-1	WASHER, SPECIAL ADJUST PLATE	108
-	1	1	1	-	455679-2	ARM, FEED MACHINING	107
-	1	1	1	-	240626-1	SHAFT-PIVOT AMP-O-MATOR	106
-	1	1	1	-	240633-1	BUSHING	105
-	1	1	1	-	240628-1	PLATE, ADJUSTING	104
-	1	1	1	-	455680-1	LEVER, INTERMEDIATE	103
-	1	1	1	-	4-22284-9	SPRING, FEED RETURN	102
-	1	1	1	-	690517-1	SPACER, ADJ PLATE	101
-	1	1	1	-	240629-1	BLOCK, PIVOT	100
-	-	1	1	-	1804311-1	SCREW, ADJUSTMENT	99
-	1	1	1	-	1804305-2	GUIDE, FEED ROD	98
-	1	1	1	-	454220-9	CAP, RAM, HDD	97
-	1	1	1	-	453736-5	HOUSING, APPLICATOR	95
-	4	4	4	-	2-21000-6	SCR, SKT HD CAP 8-32 X .375	86
-	1	1	1	-	690407-1	SPACER, CRIMPER	80
-	1	1	1	-	455749-1	GUARD WINDOW	79
-	REF	-	-	-	679532-1	INSERT, GUARD	78
-	1	1	1	-	217238-1	GENERAL INSTRUCTION PKG	72
-	1	1	1	-	4088039	EF APPL INST 408-8039	71
-	1	1	1	-	461264-1	PLATE, IDENTIFICATION	67
-	2	2	2	-	21017-2	SCREW, DRIVE	66
-	1	1	1	-	986950-1	WASHER, FLAT PRECISION	64
-	1	1	1	-	21009-2	SCR, SET, SELF LOCKING 1/4-20 X .250	63
-	1	1	1	-	690541-1	HOLDER, FEED FINGER MACHINING	51
-	1	1	1	-	224716-4	PAWL, FEED	50
-	1	1	1	-	3-21000-9	SCR, SKT HD CAP 10-32 X 1.000	49
-	-	1	1	-	690696-1	CAM, PRE FEED, 1/8	48
-	-	1	1	-	238015-1	CAM, POST FEED 1/8	47
-	1	1	1	-	690191-1	PLUG, NYLON	45
-	1	1	1	-	691533-4	RAM, SPECIAL	44
-	1	1	1	-	690125-1	SHIM SUB-ASSY	43
-	1	1	1	-	690124-5	WASHER, RAM (.062)	42
-	1	1	1	-	3-21002-6	SCR, BTN SKT HD CAP 1/4-20 X .875	41
-	1	1	1	-	690223-2	SPACER, INSULATION DISC	38
-	1	1	1	-	354777-1	WIRE DISC, ASSEMBLY	37
-	1	1	1	-	22480-5	SPRING, COMPRESSION	36
-	1	1	1	-	690212-1	POST, RAM	35
-	5	5	5	-	21024-4	WASHER, SPRG LOCK, REG NO 8	32
-	2	2	2	-	3-21000-8	SCR, SKT HD CAP 10-32 X .875	31
-	2	2	2	-	21022-2	NUT, LOCK, HEX, TORQUE, 8-32	27
-	1	1	1	-	455676-4	PLATE, BASE	26
-	2	2	2	-	22354-8	STUD, THREADED	25
-	1	1	1	-	2-458803-0	PLATE, STRIP GUIDE, SLOTTED	24
-	2	2	2	-	21024-5	WASHER, SPRG LOCK, REG NO 10	23
-	2	2	2	-	22281-9	SPRING, COMPRESSION	22
-	1	1	1	-	1-464451-1	ARM, STOCK DRAG	21
-	1	1	1	-	464452-1	DRAG, STOCK	20
-	1	1	1	-	6-458030-4	STRIP GUIDE, REAR	19
-	1	1	1	-	6-458031-4	STRIP GUIDE, FRONT	18
-	4	4	4	-	3-21002-3	SCR, BTN SKT HD CAP 1/4-20 X .500	17
-	1	1	1	-	5-22280-5	SPRING, COMPRESSION	12
-	1	1	1	-	1-240644-2	PLATE, REAR SHEAR	11
-	2	2	2	-	240645-9	SPACER, SHEAR PLATE	10
-	1	1	1	-	1633369-1	ANVIL	8
-	1	1	1	-	1633370-1	BLADE, SLUG	7
-	1	1	1	-	2-692134-6	TERMINAL POSITIONER	6
-	1	1	1	-	690407-1	SPACER, CRIMPER	2
-	1	1	1	-	1633368-1	CRIMPER, WIRE	1

QTY	REV	DESCRIPTION	ITEM NO				
-77	-3	-2	-1	U/M	PART NO	DESCRIPTION	ITEM NO

# Mouser Electronics

Authorized Distributor

Click to View Pricing, Inventory, Delivery & Lifecycle Information:

[TE Connectivity:](#)

[1852174-3](#)