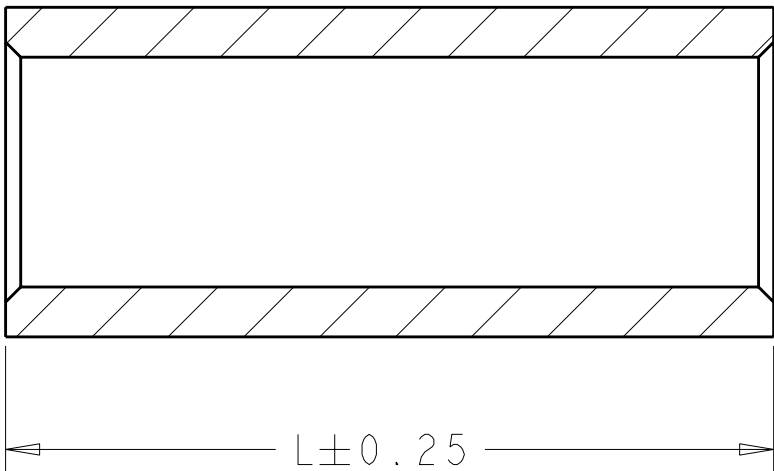
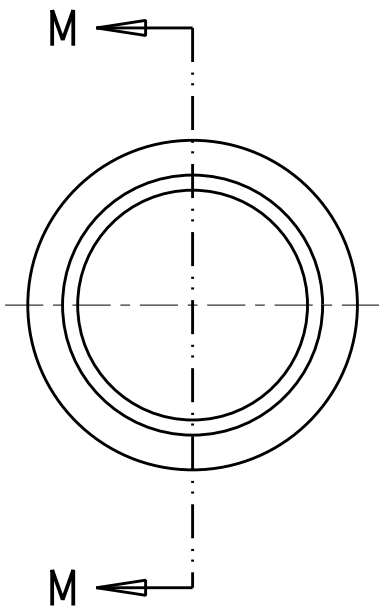


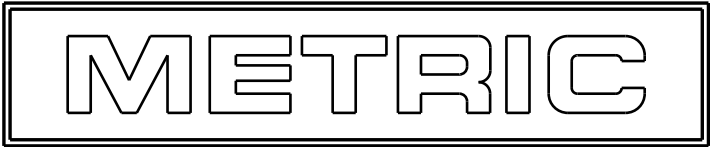
2		1					
LOC	DIST	REVISIONS					
CM	0	P	LTR	DESCRIPTION	DATE	DWN	APVD
			2	REDRAWN - UPDATED	10JUN2003	BY	RW
			0	REVISED PER 0G3B-1056-04	13MAR06	KW	JE



SECTION M-M

28.0	12.2	11.2	#2/0 TO #1/0	350 AMP	1604121-6
25.4	10.9	7.6	#1/0 TO #4 AWG	175 AMP	1604121-5
25.4	10.9	8.6	#1/0 TO #2 AWG	175 AMP	1604121-4
25.4	10.9	9.9	#1/0 TO #1 AWG	175 AMP	1604121-3
25.4	10.9	5.8	#1/0 TO #6 AWG	175 AMP	1604121-2
25.4	10.9	4.8	#1/0 TO #10 AWG	175 AMP	1604121-1
L±0.25 (LENGTH)	ØD±0.1 (O.D.)	ØE±0.1 (I.D.)	REDUCTION RANGE	CONNECTOR SERIES	PART NUMBER
DIMENSIONS			DESCRIPTION		

1. MATERIAL: COPPER
2. PLATING: SILVER



THIS DRAWING IS A CONTROLLED DOCUMENT FOR TYCO ELECTRONICS CORPORATION. IT IS SUBJECT TO CHANGE AND THE CONTROLLING ENGINEERING ORGANIZATION SHOULD BE CONTACTED FOR THE LATEST REVISION.

DIMENSIONS:
mm

MATERIAL

-

TOLERANCES UNLESS OTHERWISE SPECIFIED:

0 PLC ±0.5

1 PLC ±0.13

2 PLC ±0.13

3 PLC ±0.001

4 PLC ±0.001

ANGLES ±

FINISH

-

DWN
Brent D. Yohn
10JUN2003

CHK
R.P.WALTER
10JUN2003

APVD
R.P.WALTER
10JUN2003

PRODUCT SPEC

-

APPLICATION SPEC

-

WEIGHT

-

CUSTOMER DRAWING

tyco
Electronics

Tyco Electronics
Harrisburg, PA 17105-3608

NAME

BUSHING, REDUCING, CRIMP,
AMP POWER SERIES 175 AND 350

SIZE

A3

CAGE CODE

00779

DRAWING NO

C-1604121

RESTRICTED TO

-

SCALE

4:1

SHEET

1

OF

1

REV

0

Mouser Electronics

Authorized Distributor

Click to View Pricing, Inventory, Delivery & Lifecycle Information:

[TE Connectivity:](#)

[1604121-2](#)