

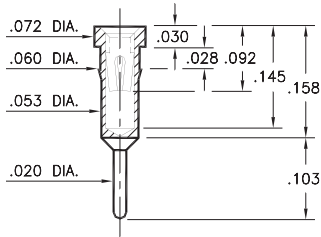
PIN RECEPTACLES

FOR .015" - .025" DIAMETER PINS

4011

4011-0-15-XX-30-XX-04-0

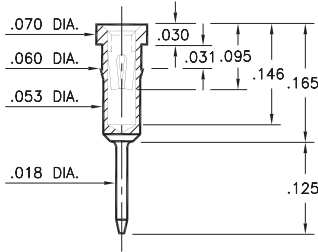
Press-fit in .057 mounting hole



1801

1801-0-15-XX-30-XX-04-0

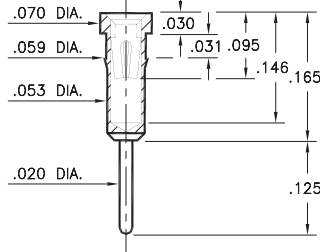
Press-fit in .057 mounting hole.
Shell is Phosphor Bronze Alloy 544 (B2)



1001

1001-0-15-XX-3X-XX-04-0

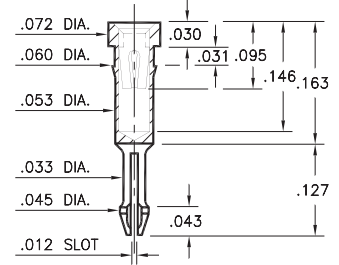
Press-fit in .057 mounting hole



0156

0156-0-18-XX-30-XX-04-0

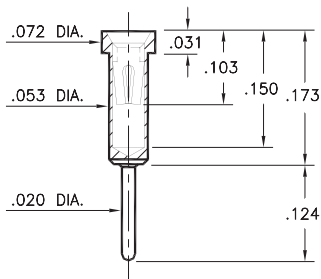
Self-retention socket pin .038 - .043 hole prior to soldering



0255

0255-0-15-XX-30-XX-04-0

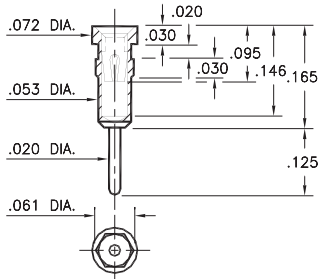
Solder mount in .022 min. mounting hole



1109

1109-0-15-XX-30-XX-04-0

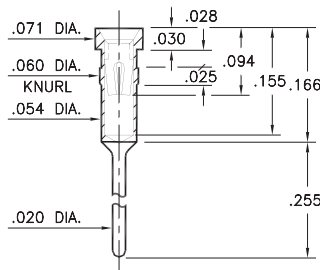
Hex press-fit in .057 plated through-hole



3013

3013-0-15-XX-32-XX-04-0

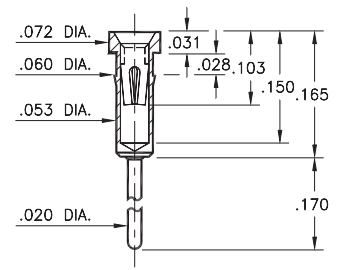
Press-fit in .057 mounting hole



0134

0134-0-15-XX-3X-XX-04-0

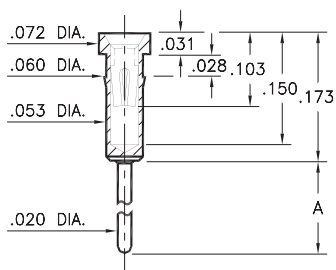
Press-fit in .057 mounting hole



0132/0135

013X-0-15-XX-30-XX-04-0

Press-fit in .057 mounting hole

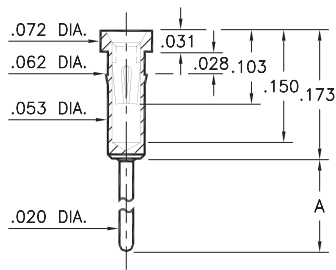


Basic Part Number	Length A
0132-0	.273
0135-0	.183

0133/0147

01XX-0-15-XX-30-XX-04-0

Press-fit in .059 mounting hole



Basic Part Number	Length A
0133-0	.382
0147-0	.563

SPECIFICATIONS:

Shell Material: Brass Alloy 360, 1/2 Hard

Contact Material: Beryllium Copper Alloy 172, HT

Dimensions: Inches

Tolerances On: Lengths: ±.005
Diameters: ±.002
Angles: ± 2°



ORDER CODE: XXXX - X - 15 - XX - XX - XX - 10 - 0

BASIC PART #

SPECIFY SHELL FINISH:

- 01 200 μ" TIN/LEAD OVER NICKEL
- ◆ 80 200 μ" TIN OVER NICKEL (RoHS)
- ◆ 15 10 μ" GOLD OVER NICKEL (RoHS)

SPECIFY CONTACT FINISH:

- 02 100 μ" TIN/LEAD OVER NICKEL
- ◆ 84 100 μ" TIN OVER NICKEL (RoHS)
- ◆ 27 30 μ" GOLD OVER NICKEL (RoHS)

SELECT CONTACT:

#30 or #32 CONTACT (DATA ON PAGE 253)

(For alternate contact choices, see groups B and C on page 248)



Mouser Electronics

Authorized Distributor

Click to View Pricing, Inventory, Delivery & Lifecycle Information:

Mill-Max:

[4011-0-15-01-30-02-04-0](#) [1801-0-15-01-30-02-04-0](#) [1801-0-15-01-30-27-04-0](#) [1001-0-15-15-30-27-04-0](#) [1109-0-15-15-30-27-04-0](#) [1001-0-15-01-30-27-04-0](#) [1109-0-15-01-30-02-04-0](#) [1109-0-15-01-30-27-04-0](#) [1001-0-15-01-32-02-04-0](#) [1001-0-15-01-32-27-04-0](#) [1001-0-15-01-30-02-04-0](#) [0156-0-18-01-30-02-04-0](#) [0156-0-18-01-30-27-04-0](#) [0147-0-15-01-30-02-04-0](#) [0147-0-15-01-30-27-04-0](#) [0135-0-15-01-30-02-04-0](#) [0135-0-15-01-30-27-04-0](#) [0134-0-15-01-32-02-04-0](#) [0134-0-15-01-32-27-04-0](#) [0134-0-15-01-30-02-04-0](#) [0134-0-15-01-30-27-04-0](#) [0133-0-15-01-30-02-04-0](#) [0133-0-15-01-30-27-04-0](#) [0132-0-15-01-30-27-04-0](#) [0132-0-15-15-30-27-04-0](#) [0133-0-15-15-30-27-04-0](#) [0134-0-15-15-30-27-04-0](#) [0134-0-15-15-32-27-04-0](#) [0135-0-15-15-30-27-04-0](#) [0147-0-15-15-30-27-04-0](#) [0156-0-18-15-30-27-04-0](#) [0255-0-15-15-30-27-04-0](#) [1001-0-15-15-32-27-04-0](#) [1801-0-15-15-30-27-04-0](#) [4011-0-15-15-30-27-04-0](#) [1001-0-15-80-30-14-04-0](#) [1801-0-15-00-00-00-04-0](#) [0134-0-15-00-32-00-04-0](#) [0133-0-15-00-00-00-04-0](#) [1001-0-15-00-00-00-04-0](#) [1109-0-15-00-00-00-04-0](#) [0132-0-15-00-00-00-04-0](#) [0147-0-15-00-00-00-04-0](#) [4011-0-15-00-00-00-04-0](#) [0255-0-15-00-00-00-04-0](#) [3013-0-15-00-00-00-04-0](#) [0134-0-15-00-00-00-04-0](#) [0156-0-18-00-00-00-04-0](#) [1001-0-15-00-32-00-04-0](#) [1801-0-15-01-30-14-04-0](#) [1001-0-15-80-32-14-04-0](#) [1109-0-15-01-30-14-04-0](#) [1001-0-15-01-32-14-04-0](#) [0132-0-15-80-30-14-04-0](#) [0134-0-15-80-32-14-04-0](#) [0135-0-15-80-30-14-04-0](#) [0134-0-15-80-30-14-04-0](#) [0156-0-18-01-30-14-04-0](#) [0134-0-15-01-32-14-04-0](#) [0147-0-15-80-30-14-04-0](#) [3013-0-15-01-32-14-04-0](#) [0134-0-15-01-30-14-04-0](#) [0132-0-15-01-30-14-04-0](#) [0147-0-15-01-30-14-04-0](#) [0133-0-15-80-30-14-04-0](#) [0156-0-18-80-30-14-04-0](#) [1109-0-15-80-30-14-04-0](#) [3013-0-15-80-32-14-04-0](#) [0255-0-15-80-30-14-04-0](#) [0135-0-15-01-30-14-04-0](#) [0255-0-15-01-30-14-04-0](#) [0133-0-15-01-30-14-04-0](#) [1801-0-15-80-30-14-04-0](#) [4011-0-15-01-30-14-04-0](#) [4011-0-15-80-30-14-04-0](#)