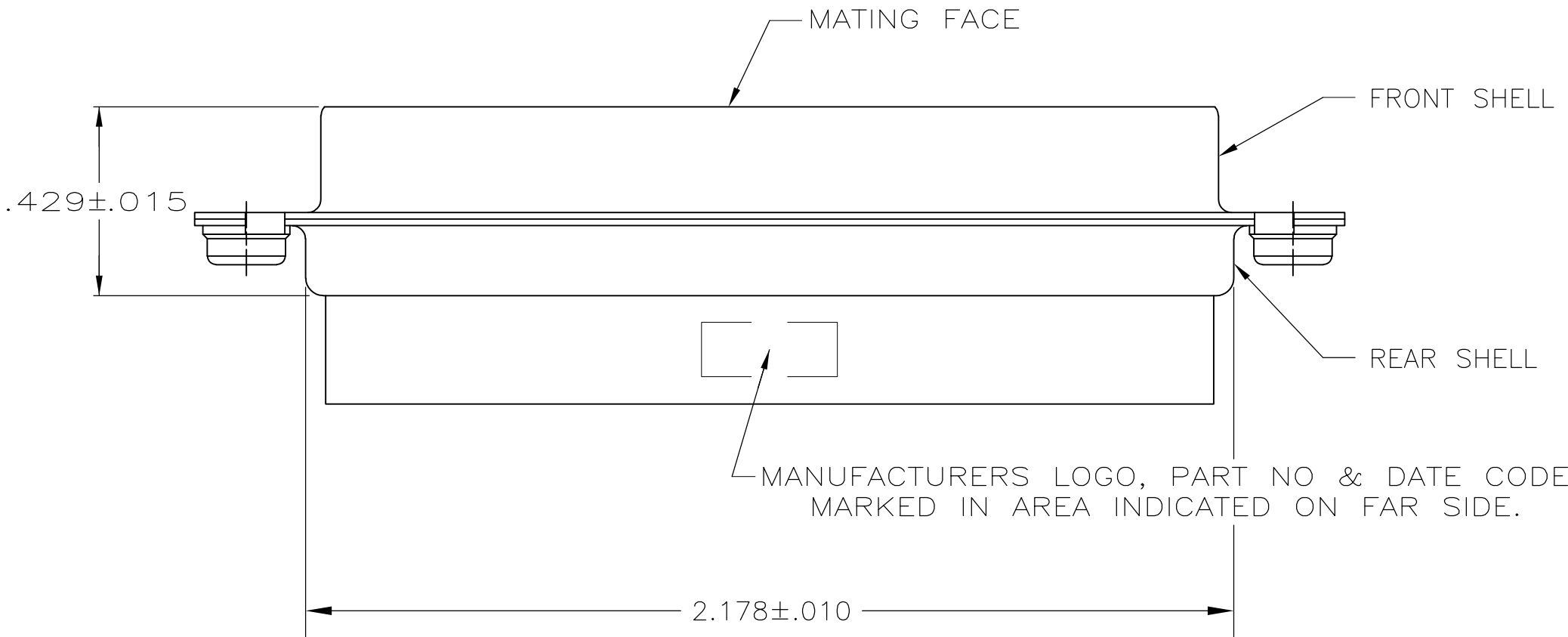
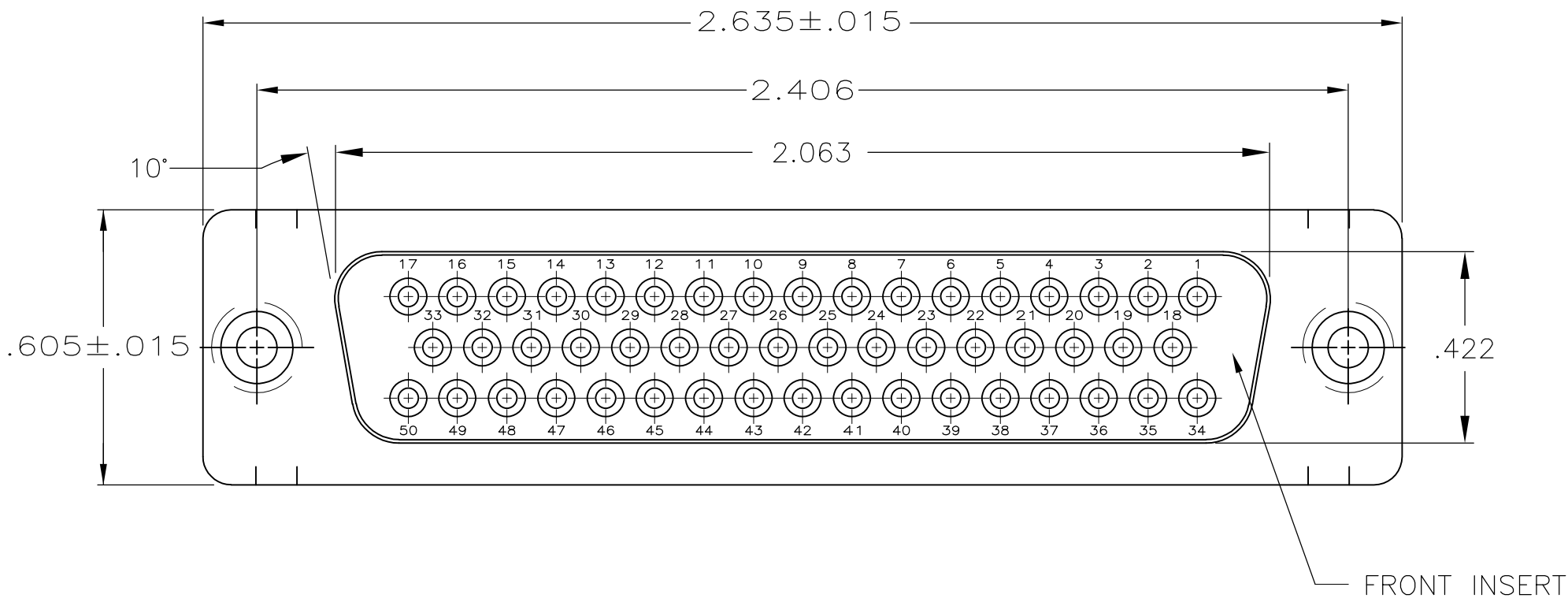
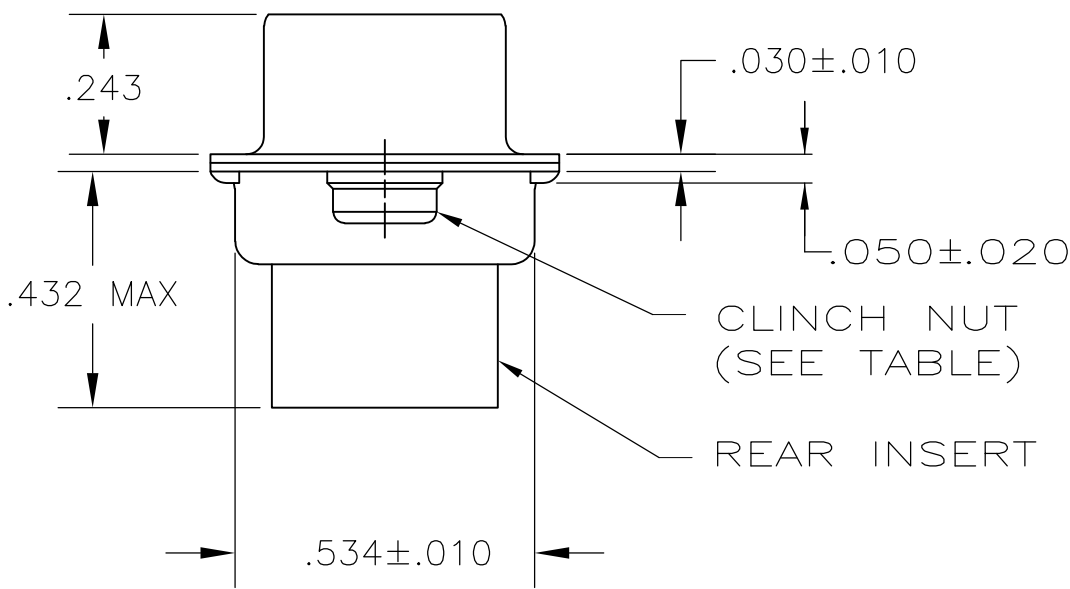


LOC	DIST	REVISIONS					
		P	LTR	DESCRIPTION	DATE	OWN	APVD
GP	00		B	REVISED PER ECO-14-011808	11AUG2014	AP	SB



1. CONNECTOR ACCEPTS SIZE 20 DF SOCKET CONTACTS, RETENTION TINES ARE AN INTEGRAL PART OF INSERT.
2. INSERTS: GLASS-FILLED PBT OR GLASS-FILLED NYLON, UL94V-0 RATED. COLOR: BLACK.
- SHELLS & CLINCH NUTS: CARBON STEEL PER ASTM A109.
3. SHELLS: .000200 MIN TIN OVER .000100 MIN COPPER.
4. BLACK INSERT, ZINC PLATED CLEAR CHROMATE COATING.
5. BLUE INSERT, ZINC PLATED YELLOW CHROMATE COATING.



5	M3	5745884-2
4	4-40	5745884-1
CLINCH NUT FINISH	CLINCH NUT THREAD	PART NO

THIS DRAWING IS A CONTROLLED DOCUMENT.		DWN L. VARELA - 12-21-04	TE Connectivity			
DIMENSIONS: INCHES		CHK J. GERACE 12-21-04				
	TOLERANCES UNLESS OTHERWISE SPECIFIED:		NAME			
	0 PLC $\pm$ -		APVD M. WALMSLEY 12-21-04			
	1 PLC $\pm$ -		PRODUCT SPEC			
	2 PLC $\pm$ -		108-40005			
	3 PLC $\pm$ .005		APPLICATION SPEC			
	4 PLC $\pm$ -		114-40030			
	ANGLES $\pm$ -		WEIGHT -			
	FINISH SHELLS: 2		SIZE A2			
	CLINCH NUTS: SEE TABLE		CAGE CODE 00779			
CUSTOMER DRAWING		SCALE 4:1		SHEET 1 of 1		REV B

# Mouser Electronics

Authorized Distributor

Click to View Pricing, Inventory, Delivery & Lifecycle Information:

[TE Connectivity:](#)

[5745884-2](#)