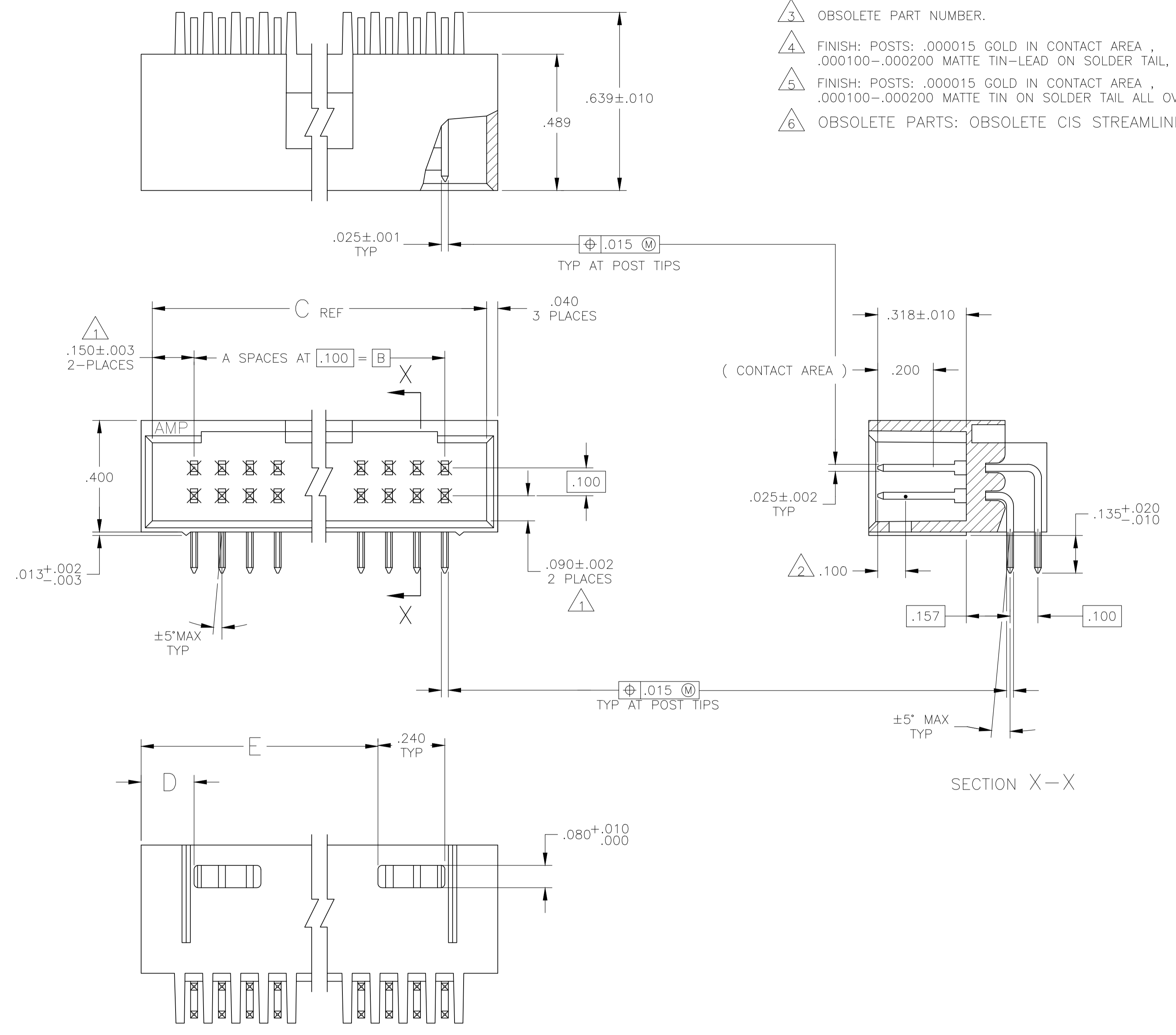
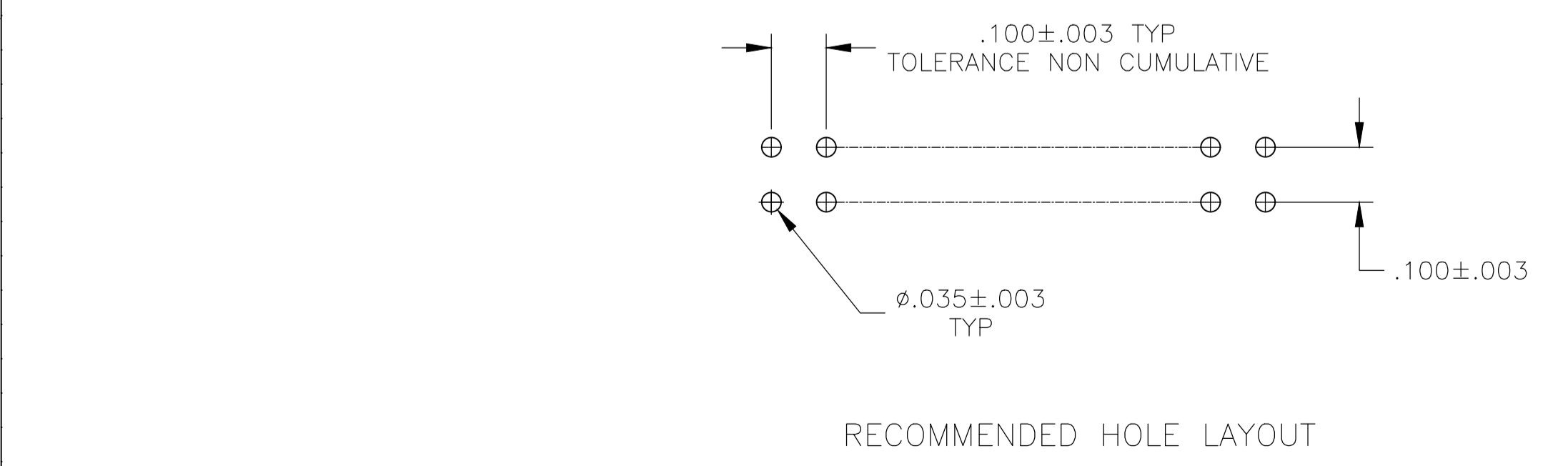


REVISIONS					
REV	DATE	DESCRIPTION	BY	CHK	APPV
H4	08FEB2018	PART STATUS UPDATED IN PART LIST TABLE	SD	PS	

- 1 THE NOTED DIMENSIONS APPLY AT THE INTERSECTION OF THE POST AND HOUSING.
- 2 POINT OF MEASUREMENT FOR PLATING THICKNESS.
- 3 OBSOLETE PART NUMBER.
- 4 FINISH: POSTS: .000015 GOLD IN CONTACT AREA, .000100-.000200 MATTE TIN-LEAD ON SOLDER TAIL, ALL OVER .000050 NICKEL.
- 5 FINISH: POSTS: .000015 GOLD IN CONTACT AREA, .000100-.000200 MATTE TIN ON SOLDER TAIL ALL OVER .000050 NICKEL.
- 6 OBSOLETE PARTS: OBSOLETE CIS STREAMLINING PER D.RENAUD/D.SINISI



REV	DATE	DESCRIPTION	BY	CHK	APPV	PLATING	E	D	C	B	A	NO OF POSN	ASSEMBLY PART NUMBER
6		OBSOLETE											
5	3.490	.190	3.800	3.500	35	72							8-102570-3
5	3.390	.190	3.700	3.400	34	70							8-102570-2
5	3.290	.190	3.600	3.300	33	68							8-102570-1
5	3.190	.190	3.500	3.200	32	66							8-102570-0
5	3.090	.190	3.400	3.100	31	64							7-102570-9
5	2.990	.190	3.300	3.000	30	62							7-102570-8
5	2.890	.190	3.200	2.900	29	60							7-102570-7
5	2.790	.190	3.100	2.800	28	58							7-102570-6
5	2.690	.190	3.000	2.700	27	56							7-102570-5
5	2.590	.190	2.900	2.600	26	54							7-102570-4
5	2.490	.190	2.800	2.500	25	52							7-102570-3
5	2.390	.190	2.700	2.400	24	50							7-102570-2
6	2.290	.190	2.600	2.300	23	48							7-102570-1
5	2.190	.190	2.500	2.200	22	46							7-102570-0
6	2.090	.190	2.400	2.100	21	44							6-102570-9
6	1.990	.190	2.300	2.000	20	42							6-102570-8
5	1.790	.190	2.100	1.800	18	38							6-102570-7
5	1.690	.190	2.000	1.700	17	36							6-102570-6
5	1.590	.190	1.900	1.600	16	34							6-102570-5
6	1.490	.190	1.800	1.500	15	32							6-102570-4
6	1.390	.190	1.700	1.400	14	30							6-102570-3
5	1.290	.190	1.600	1.300	13	28							6-102570-2
5	1.190	.190	1.500	1.200	12	26							6-102570-1
6	1.090	.190	1.400	1.100	11	24							6-102570-0
5	.990	.190	1.300	1.000	10	22							5-102570-9
5	.890	.190	1.200	.900	9	20							5-102570-8
5	---	.490	1.100	.800	8	18							5-102570-7
5	---	.390	1.000	.700	7	16							5-102570-6
5	---	.390	.900	.600	6	14							5-102570-5
5	---	.290	.800	.500	5	12							5-102570-4
5	---	.290	.700	.400	4	10							5-102570-3
5	---	.190	.600	.300	3	8							5-102570-2
5	1.890	.190	2.200	1.900	19	40							5-102570-1
6	3.490	.190	3.800	3.500	35	72							3-102570-3
4	3.390	.190	3.700	3.400	34	70							3-102570-2
4	3.290	.190	3.600	3.300	33	68							3-102570-1
4	3.190	.190	3.500	3.200	32	66							3-102570-0
4	3.090	.190	3.400	3.100	31	64							2-102570-9
4	2.990	.190	3.300	3.000	30	62							2-102570-8
4	2.890	.190	3.200	2.900	29	60							2-102570-7
6	2.790	.190	3.100	2.800	28	58							2-102570-6
6	2.690	.190	3.000	2.700	27	56							2-102570-5
4	2.590	.190	2.900	2.600	26	54							2-102570-4
4	2.490	.190	2.800	2.500	25	52							2-102570-3
4	2.390	.190	2.700	2.400	24	50							2-102570-2
4	2.290	.190	2.600	2.300	23	48							2-102570-1
4	2.190	.190	2.500	2.200	22	46							2-102570-0
6	2.090	.190	2.400	2.100	21	44							1-102570-9
4	1.990	.190	2.300	2.000	20	42							1-102570-8
4	1.790	.190	2.100	1.800	18	38							1-102570-7
4	1.690	.190	2.000	1.700	17	36							1-102570-6
4	1.590	.190	1.900	1.600	16	34							1-102570-5
4	1.490	.190	1.800	1.500	15	32							1-102570-4
6	1.390	.190	1.700	1.400	14	30							1-102570-3
4	1.290	.190	1.600	1.300	13	28							1-102570-2
4	1.190	.190	1.500	1.200	12	26							1-102570-1
4	1.090	.190	1.400	1.100	11	24							1-102570-0
4	.990	.190	1.300	1.000	10	22							102570-9
4	.890	.190	1.200	.900	9	20							102570-8
4	---	.490	1.100	.800	8	18							102570-7
4	---	.390	1.000	.700	7	16							102570-6
4	---	.390	.900	.600	6	14							102570-5
4	---	.290	.800	.500	5	12							102570-4
4	---	.290	.700	.400	4	10							102570-3
4	---	.190	.600	.300	3	8							102570-2
4	1.890	.190	2.200	1.900	19	40							102570-1



THIS DRAWING IS A CONTROLLED DOCUMENT.

APPROVED: R. FEJDT, 21-8-87

DATE: 25-8-87

BY: H. MOLL, 21-8-87

CHK: L. A. MAYER

NAME: HDR ASSY, MOD II SHROUDED .100X.100 C/L 4 SIDES, DR RIGHT ANGLE W/ .025 SQ POSTS

SIZE: A1, CAGE CODE: 00779, DRAWING NO: 102570

WEIGHT: --

MATERIAL: HOUSING: FINE RETICENT THERMOPLASTICS; SOUR: BRASS; POSTS: POS BRONZE

FINISH: SEE TABLE

SCALE: 4:1, SHEET: 1 OF 1, REV: H4

CUSTOMER DRAWING

# Mouser Electronics

Authorized Distributor

Click to View Pricing, Inventory, Delivery & Lifecycle Information:

[TE Connectivity:](#)

[5-102570-2](#)