

MICRO SWITCH

A DIVISION OF MINNEAPOLIS-HONEYWELL REGULATOR COMPANY
PINEBURY, ILLINOIS

FED. MFR. CODE 91929

SWITCH - BASIC

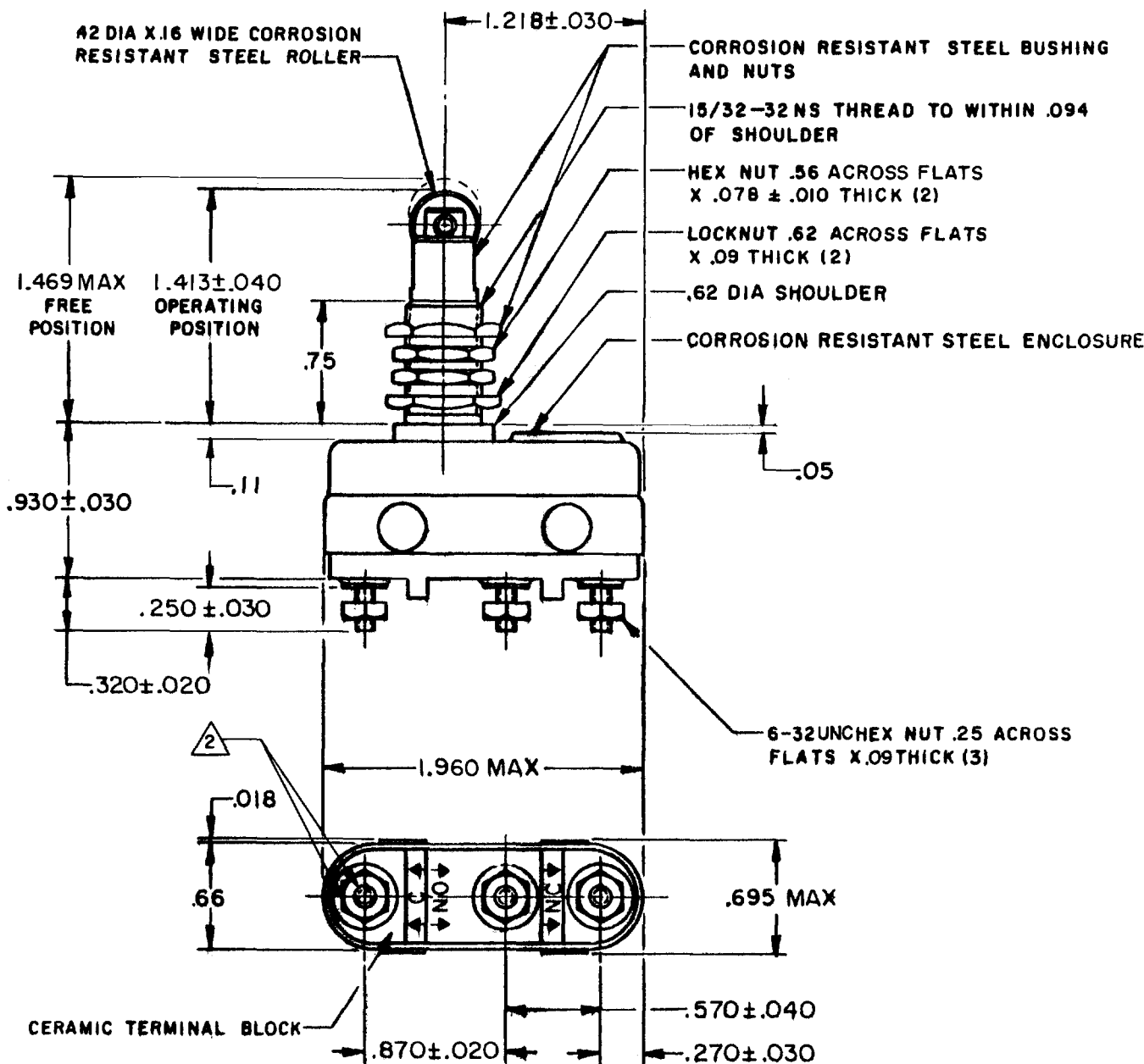
CATALOG LISTING

3HT1

(M) 3HT1
ISSUE 5

CATALOG LISTING		M	3HT1	PAGE 1 OF 1
REPLACES				
RELEASE NO.		DRAWING NUMBER		
ISSUE		15		


CHECK		CHECK		CHECK	
REVISIONS		REVISIONS		REVISIONS	
A	CO16180	5	RER	61	SEP 61
B	CO16367	24	RER	61	NOV 61
C	CO18487	26	LEB	63	SEPT 63
D	CO21919	12	OMW	67	APR 67
E	CO29241	29	RER	71	AUG 71
F	CO32050	17	RER	73	MAY 73
G	CO-36610	11	KSW	76	FEB 76
H	CO 53398	21	CSL	83	JUN 83
J	CO 54474	3	DJS	84	FEB 84
K	CO-92890	7	CSL	98	MAY 98



NOTE-

- 1-SWITCH WILL WITHSTAND TEMPERATURE OF 1000°F MAX
- 2-RECOMMENDED APPLIED TORQUE FOR A 6-32 UNC STAINLESS STEEL TERMINAL IS 10 IN LB MAX. EXCEEDING THIS TORQUE COULD DAMAGE THE SWITCH

THIS DRAWING COVERS A PROPRIETARY ITEM AND IS THE PROPERTY OF MICRO SWITCH, A DIVISION OF MINNEAPOLIS-HONEYWELL REGULATOR CO. THIS DRAWING IS NOT TO BE COPIED OR USED WITHOUT THE APPROVAL OF MICRO SWITCH.

CHARACTERISTICS		ELECTRICAL DATA		SCALE FULL
OPERATING FORCE — — — — 30 OZ MAX		CONTACT ARRANGEMENT S P D T		DO NOT SCALE PRINT
RELEASE FORCE — — — — 6 OZ MIN		L305 3A 1/10HP 125 VAC 2A 1/6HP <u>250</u> VAC 		UNLESS OTHERWISE SPECIFIED DIMENSIONS ARE IN INCHES
DIFFERENTIAL TRAVEL — — — — .010 MAX				TOLERANCES ARE:
OVERTRAVEL — — — — .188 MIN				ONE PLACE (.0) ±.030 TWO PLACE (.00) ±.015 THREE PLACE (.000) ±.005 ANGLES ±
				WEIGHT 2.7 OZ MAX



FORMTEK

DRAWN

RER 5 SEP 61

Mouser Electronics

Authorized Distributor

Click to View Pricing, Inventory, Delivery & Lifecycle Information:

[Honeywell:](#)

[3HT1](#)