

# NSR0320XV6T1

## Schottky Barrier Diode

These Schottky barrier diodes are designed for high current, handling capability, and low forward voltage performance.

### Features

- Low Forward Voltage – 0.35 V (Typ) @  $I_F = 10$  mAdc
- High Current Capability
- These are Pb-Free Devices

### MAXIMUM RATINGS ( $T_J = 125^\circ\text{C}$ unless otherwise noted)

| Rating  | Symbol    | Value       | Unit                       |
|---|-----------|-------------|----------------------------|
| Reverse Voltage   | $V_R$     | 23          | V                          |
| Forward Power Dissipation @ $T_A = 25^\circ\text{C}$<br>Derate above $25^\circ\text{C}$ | $P_F$     | 200<br>2.0  | mW<br>mW/ $^\circ\text{C}$ |
| Forward Current (DC) – Continuous   | $I_F$     | 1           | A                          |
| Forward Current<br>$t = 8.3$ ms Half Sinewave; JEDEC Method                             | $I_F$     | 7.5         | A                          |
| Junction Temperature  | $T_J$     | 125 Max     | $^\circ\text{C}$           |
| Storage Temperature Range   | $T_{stg}$ | -55 to +150 | $^\circ\text{C}$           |

Stresses exceeding Maximum Ratings may damage the device. Maximum Ratings are stress ratings only. Functional operation above the Recommended Operating Conditions is not implied. Extended exposure to stresses above the Recommended Operating Conditions may affect device reliability.

### ELECTRICAL CHARACTERISTICS ( $T_A = 25^\circ\text{C}$ unless otherwise noted)

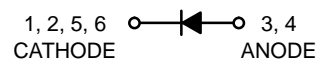
| Characteristic                                       | Symbol | Min | Typ  | Max  | Unit            |
|--|--------|-----|------|------|-----------------|
| Total Capacitance<br>( $V_R = 5.0$ V, $f = 1.0$ MHz) | $C_T$  | –   | 30   | 35   | pF              |
| Reverse Leakage<br>( $V_R = 15$ V)                   | $I_R$  | –   | 10   | 50   | $\mu\text{Adc}$ |
| Forward Voltage<br>( $I_F = 10$ mAdc)                | $V_F$  | –   | 0.24 | 0.27 | Vdc             |
| Forward Voltage<br>( $I_F = 100$ mAdc)               | $V_F$  | –   | 0.30 | 0.35 | Vdc             |
| Forward Voltage<br>( $I_F = 900$ mAdc)               | $V_F$  | –   | 0.45 | 0.50 | Vdc             |



ON Semiconductor®

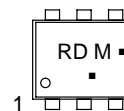
<http://onsemi.com>

## HIGH CURRENT SCHOTTKY BARRIER DIODE



SOT-563  
CASE 463A  
STYLE 5

### MARKING DIAGRAM



RD = Specific Device Code

M = Month Code

▪ = Pb-Free Package

(Note: Microdot may be in either location)

### ORDERING INFORMATION

| Device        | Package  | Shipping†        |
|---------------|----------|------------------|
| NSR0320XV6T1  | SOT-563* | 4000/Tape & Reel |
| NSR0320XV6T1G | SOT-563* | 4000/Tape & Reel |
| NSR0320XV6T5  | SOT-563* | 8000/Tape & Reel |
| NSR0320XV6T5G | SOT-563* | 8000/Tape & Reel |

†For information on tape and reel specifications, including part orientation and tape sizes, please refer to our Tape and Reel Packaging Specification Brochure, BRD8011/D.

\*This package is inherently Pb-Free.

# NSR0320XV6T1

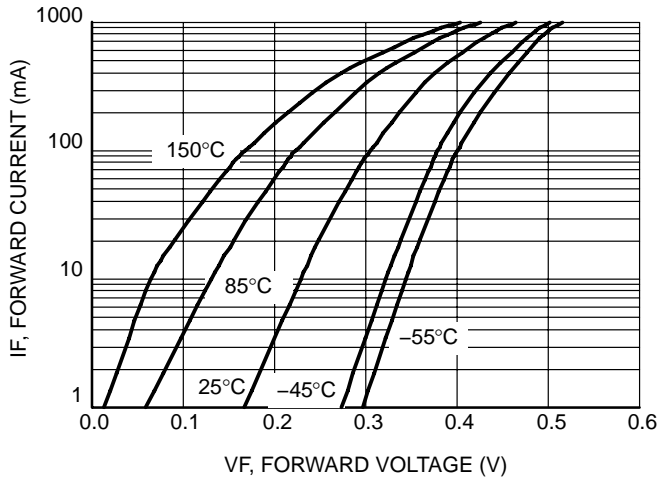


Figure 1. Forward Voltage

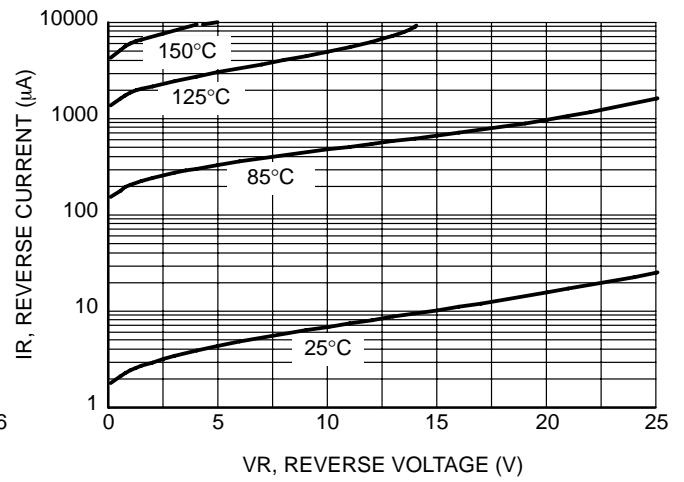


Figure 2. Leakage Current

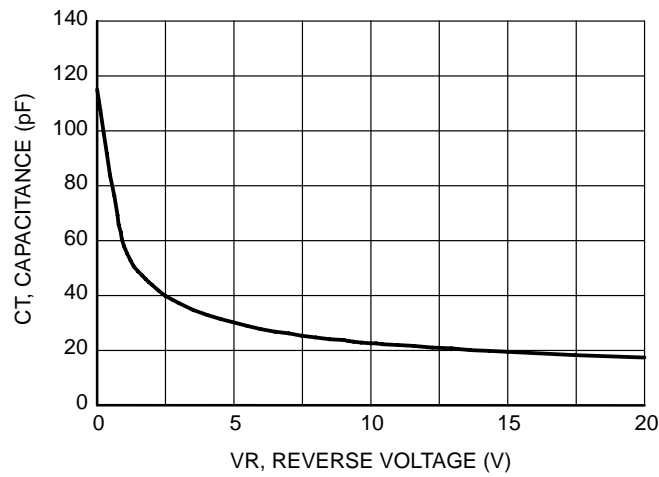
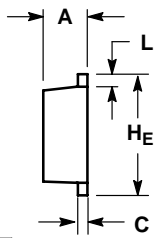
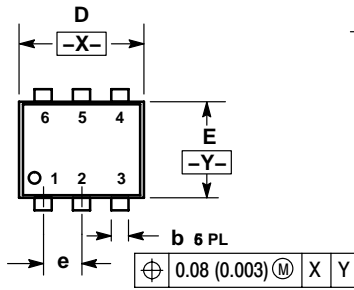


Figure 3. Total Capacitance

# NSR0320XV6T1

## PACKAGE DIMENSIONS

SOT-563, 6 LEAD  
CASE 463A-01  
ISSUE F



### NOTES:

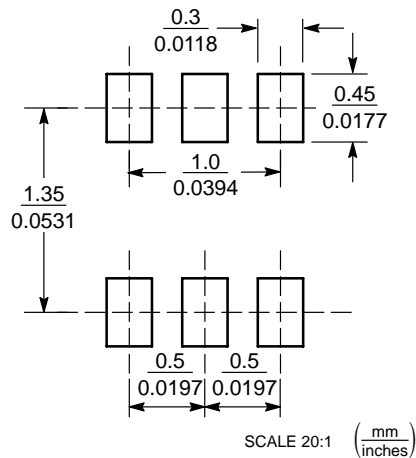
1. DIMENSIONING AND TOLERANCING PER ANSI Y14.5M, 1982.
2. CONTROLLING DIMENSION: MILLIMETERS
3. MAXIMUM LEAD THICKNESS INCLUDES LEAD FINISH THICKNESS. MINIMUM LEAD THICKNESS IS THE MINIMUM THICKNESS OF BASE MATERIAL.

| DIM            | MILLIMETERS |      |      | INCHES   |       |       |
|----------------|-------------|------|------|----------|-------|-------|
|                | MIN         | NOM  | MAX  | MIN      | NOM   | MAX   |
| A              | 0.50        | 0.55 | 0.60 | 0.020    | 0.021 | 0.023 |
| b              | 0.17        | 0.22 | 0.27 | 0.007    | 0.009 | 0.011 |
| C              | 0.08        | 0.12 | 0.18 | 0.003    | 0.005 | 0.007 |
| D              | 1.50        | 1.60 | 1.70 | 0.059    | 0.062 | 0.066 |
| E              | 1.10        | 1.20 | 1.30 | 0.043    | 0.047 | 0.051 |
| e              | 0.5 BSC     |      |      | 0.02 BSC |       |       |
| L              | 0.10        | 0.20 | 0.30 | 0.004    | 0.008 | 0.012 |
| H <sub>E</sub> | 1.50        | 1.60 | 1.70 | 0.059    | 0.062 | 0.066 |

### STYLE 5:

1. CATHODE
2. CATHODE
3. ANODE
4. ANODE
5. CATHODE
6. CATHODE

### SOLDERING FOOTPRINT\*



\*For additional information on our Pb-Free strategy and soldering details, please download the ON Semiconductor Soldering and Mounting Techniques Reference Manual, SOLDERRM/D.

ON Semiconductor and are registered trademarks of Semiconductor Components Industries, LLC (SCILLC). SCILLC reserves the right to make changes without further notice to any products herein. SCILLC makes no warranty, representation or guarantee regarding the suitability of its products for any particular purpose, nor does SCILLC assume any liability arising out of the application or use of any product or circuit, and specifically disclaims any and all liability, including without limitation special, consequential or incidental damages. "Typical" parameters which may be provided in SCILLC data sheets and/or specifications can and do vary in different applications and actual performance may vary over time. All operating parameters, including "Typicals" must be validated for each customer application by customer's technical experts. SCILLC does not convey any license under its patent rights nor the rights of others. SCILLC products are not designed, intended, or authorized for use as components in systems intended for surgical implant into the body, or other applications intended to support or sustain life, or for any other application in which the failure of the SCILLC product could create a situation where personal injury or death may occur. Should Buyer purchase or use SCILLC products for any such unintended or unauthorized application, Buyer shall indemnify and hold SCILLC and its officers, employees, subsidiaries, affiliates, and distributors harmless against all claims, costs, damages, and expenses, and reasonable attorney fees arising out of, directly or indirectly, any claim of personal injury or death associated with such unintended or unauthorized use, even if such claim alleges that SCILLC was negligent regarding the design or manufacture of the part. SCILLC is an Equal Opportunity/Affirmative Action Employer. This literature is subject to all applicable copyright laws and is not for resale in any manner.

### PUBLICATION ORDERING INFORMATION

**LITERATURE FULFILLMENT:**  
Literature Distribution Center for ON Semiconductor  
P.O. Box 5163, Denver, Colorado 80217 USA  
**Phone:** 303-675-2175 or 800-344-3860 Toll Free USA/Canada  
**Fax:** 303-675-2176 or 800-344-3867 Toll Free USA/Canada  
**Email:** orderlit@onsemi.com

**N. American Technical Support:** 800-282-9855 Toll Free  
USA/Canada  
**Europe, Middle East and Africa Technical Support:**  
Phone: 421 33 790 2910  
**Japan Customer Focus Center**  
Phone: 81-3-5773-3850

**ON Semiconductor Website:** [www.onsemi.com](http://www.onsemi.com)

**Order Literature:** <http://www.onsemi.com/orderlit>

For additional information, please contact your local Sales Representative

# Mouser Electronics

Authorized Distributor

Click to View Pricing, Inventory, Delivery & Lifecycle Information:

[ON Semiconductor:](#)

[NSR0320XV6T1G](#) [NSR0320XV6T5G](#) [NSVR0320XV6T1G](#)