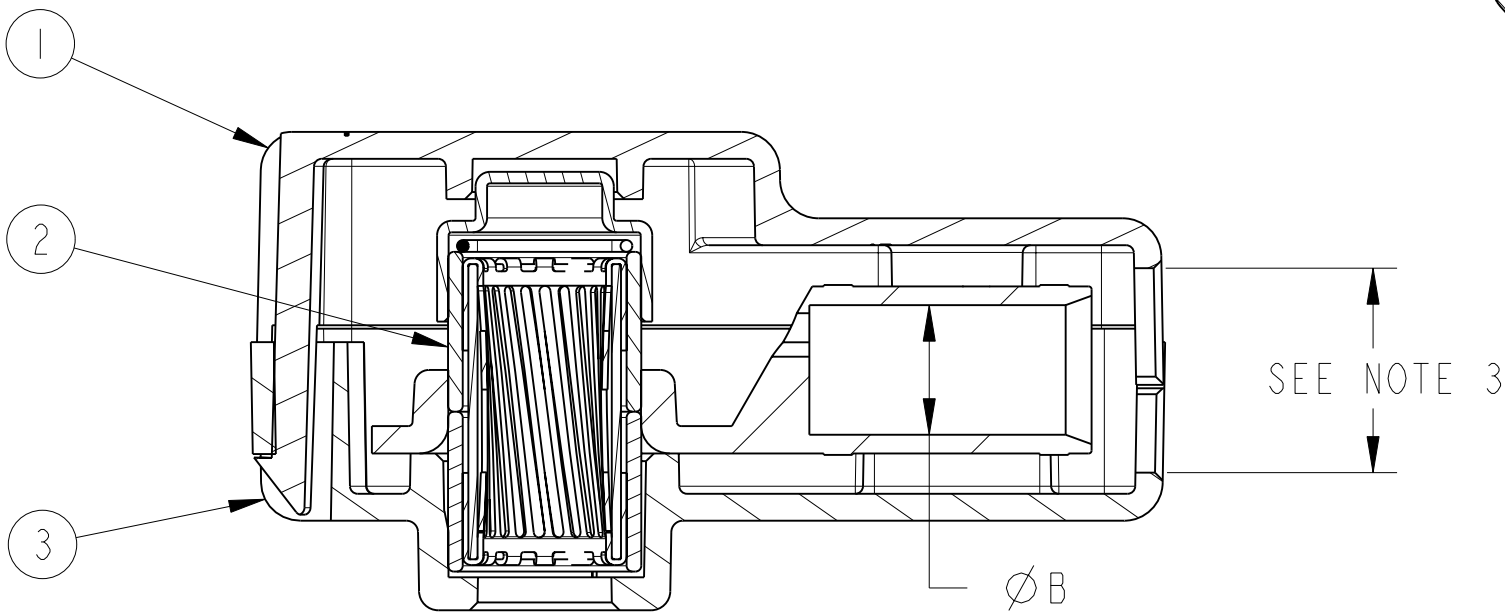
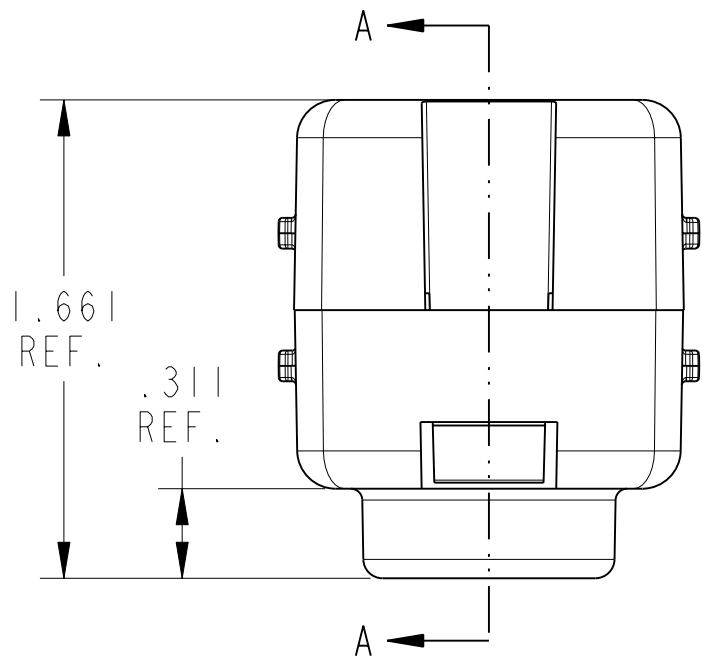
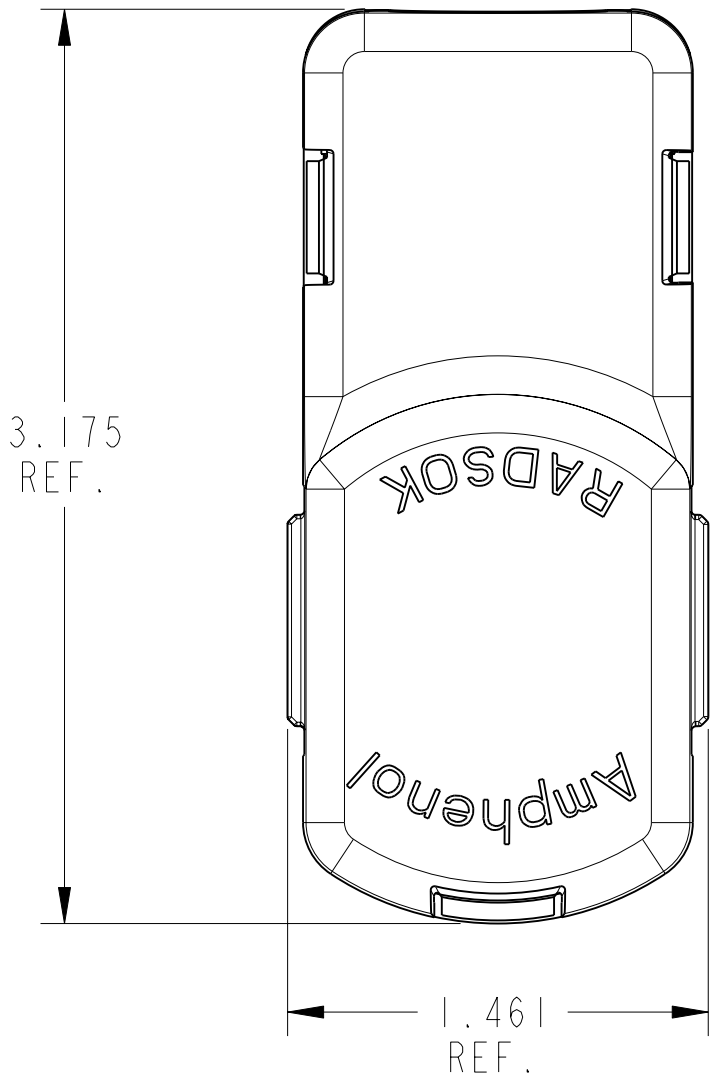


4

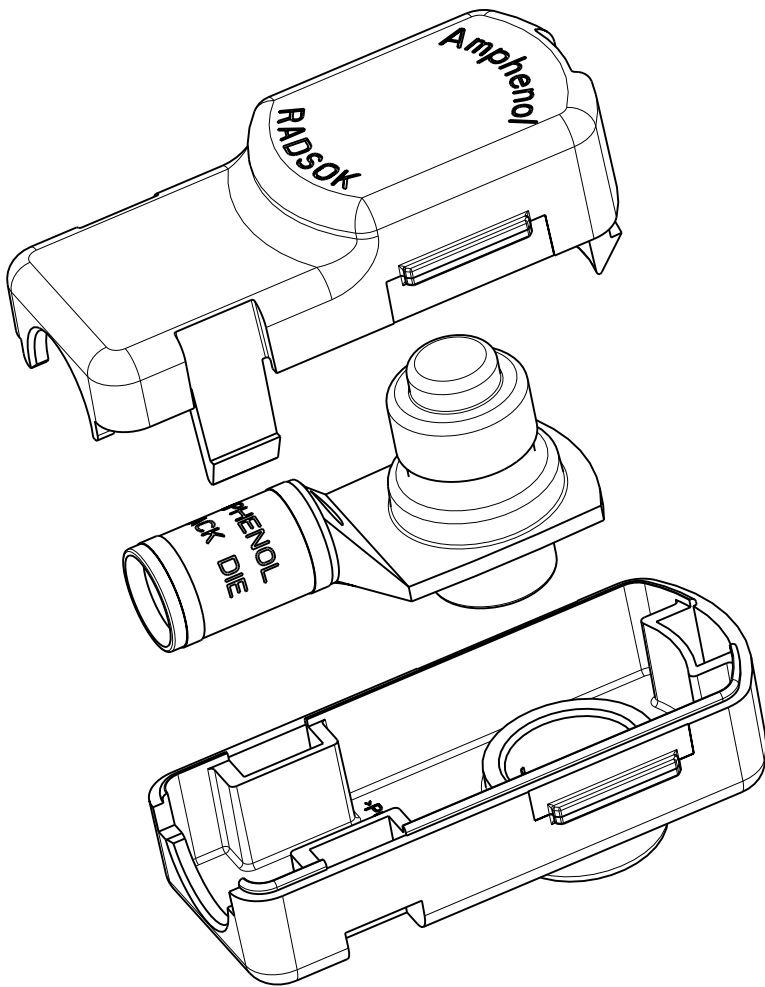
3

2

| PART NUMBER | WIRE GAGE | ØB | ITEM #2 | RADSOK FINISH |
|---------------|-----------|------|---------------|---------------|
| 10-647186-1X1 | 1/0 AWG | .390 | 10-647161-1X1 | SILVER |
| 10-647186-1X4 | 1/0 AWG | .390 | 10-647161-1X4 | NICKEL |
| 10-647186-1X5 | 1/0 AWG | .390 | 10-647161-1X5 | GOLD |
| 10-647186-2X1 | 2/0 AWG | .450 | 10-647161-2X1 | SILVER |
| 10-647186-2X4 | 2/0 AWG | .450 | 10-647161-2X4 | NICKEL |
| 10-647186-2X5 | 2/0 AWG | .450 | 10-647161-2X5 | GOLD |



SECTION A-A



SCALE 1.000

- 4) ASSEMBLY HOUSINGS ARE UL 94 V-0 RATED.
- 3) THE MAXIMUM WIRE JACKET OD IS .605 DIAMETER.
- 2) CONNECTOR SHOWN MATES WITH PIN CONTACT PART NUMBER C10-647178-00() OR EQUIV.
- 1) LUG MUST BE CRIMPED TO WIRE BEFORE TOP & BOTTOM HOUSINGS ARE SNAPPED TOGETHER FOR FINAL ASSEMBLY.

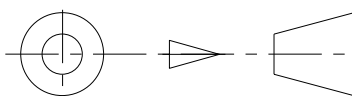
NOTES:

THE USE OF THIS DOCUMENT IS UNLIMITED. HOWEVER, DOCUMENTS REFERENCED HEREON MAY CONTAIN LIMITED RIGHTS DATA.

RELEASED / Feb . 07 2007, 09:58 AM

| | |
|---------------|--------------------------|
| N/A | PRO/ENGINEER INFORMATION |
| N/A | Pro/e Model Used: |
| | 10-647186.ASSEM |
| NEXT ASSEMBLY | Drawing Name: |
| | 10-647186 |

| UNLESS OTHERWISE SPECIFIED | SPECIFICATIONS |
|--|----------------------------|
| LINEAR DIMENSIONS ARE IN INCHES TOLERANCES: .XXXX = ±.0005 ANGLES= ±2° .XXX = ±.010 .XX = ±.03 .X = ±.1 | MATERIAL SPEC. N/A - |
| DIM.& TOL. PER ASME Y14.5M; DRM PER MIL-DTL-31000; OTHER Amphenol Sds. PER 9-3800 | PROCESS SPEC. N/A - |
| LEGENDS: =FLAG NOTE CALL OUT REFERENCE ONLY | |

| | | | | |
|---|-----------|---------------|---|--------------|
| 3 | I | 10-647163-001 | 10.3MM SURLOK BOTTOM HOUSING | |
| 2 | I | SEE CHART | 10.3MM SURLOK METAL ASSEMBLY | |
| 1 | I | 10-647163-002 | 10.3MM SURLOK TOP HOUSING | |
| POS | QTY | PART NUMBER | DESCRIPTION | NOTE |
| PARTS LIST | | | | |
| APPROVALS | | DATE | AMPHENOL CORPORATION 40-60 DELAWARE AVENUE SIDNEY, N.Y. 13838 | |
| PREPARED BY DERIC LI | | 03-Aug-06 | | |
| ENGINEER IN CHARGE M. UPPLER | | | | |
| DESIGN MANAGER J. SANDBURG | | | | |
| DESIGN ACTIVITY GROUP C&I | | | 10.3MM SURLOK RADSOK ASSEMBLY | |
| THIRD ANGLE PROJECTION | | | | |
|  | | | | |
| SIZE | CAGE CODE | | DOCUMENT NO. | REV. |
| C | 77820 | | 10-647186-()X() | A |
| SCALE: 1.0 | | REF: | 10-647185 | SHEET 1 OF 1 |

Mouser Electronics

Authorized Distributor

Click to View Pricing, Inventory, Delivery & Lifecycle Information:

[Amphenol:](#)

[PSL-10310K](#)