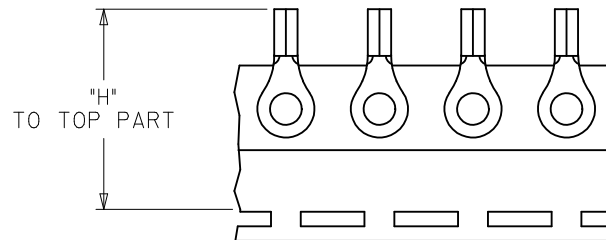
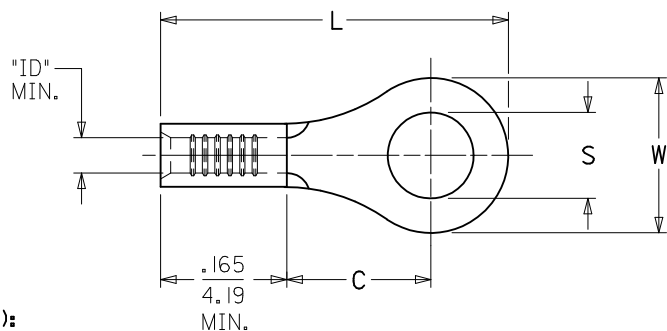


	10	9	8	7	6	5	4	3	2	1		
	MATERIAL NO. LOOSE PIECE	ENG. NO.	MATERIAL NO. TAPE MOUNTED	ENG. NO.	STUD SIZE	"S" C2 ±.005/0.13	"W" MAX.	"C" MIN.	"L" MAX.	"ID" MIN.	STOCK THICKNESS	"H" ±.020/0.51
F	190690027	AA-120-02	190690028	AA-120-02T	2	.094/(2.39)	.235/(6.00)	.157/(3.99)	.484/(12.29)	.062/(1.57)	.028/(0.71)	1.155/(29.34)
	190690029	AA-120-04	190690030	AA-120-04T	4	.119/(3.02)						
	190690031	AA-120-06	190690032	AA-120-06T	6	.146/(3.71)						
	190690033	AA-121-06	190690034	AA-121-06T	6	.146/(3.71)	.322/(8.18)	.270/(6.86)	.641/(16.28)	.062/(1.57)	.028/(0.71)	
	190690035	AA-121-08	190690036	AA-121-08T	8	.173/(4.39)						
E	190690037	AA-121-10	190690038	AA-121-10T	10	.198/(5.03)	.477/(12.11)	.386/(9.80)	.835/(21.21)	.062/(1.57)	.028/(0.71)	
	190690039	AA-121-209	190690475	AA-121-209T	209	.209/(5.18)						
	190690040	AA-122-10	190690041	AA-122-10T	10	.198/(5.03)						
	190690042	AA-122-14	190690044	AA-122-14T	14	.265/(6.71)	.544/(13.82)	.552/(14.02)	1.034/(26.26)	.055/(1.40)	.031/(0.79)	
	190690045	AA-122-56	190690046	AA-122-56T	56	.328/(8.33)						
D	190690047	AA-126-10	-----	-----	10	.198/(5.03)						.264/(6.70)
	190690048	AA-126-14	190690128	AA-126-14T	14	.265/(6.71)						
	190690051	AA-126-56	-----	-----	56	.328/(8.33)						
		190690049	AA-126-38	190690050	AA-126-38T	38	.390/(9.91)	.283/(7.20)	.240/(6.10)	.591/(15.00)	.062/(1.57)	.028/(0.71)
		190690052	AA-132-04	190690053	AA-132-04T	4	.119/(3.02)					
190690054		AA-132-06	190690055	AA-132-06T	6	.146/(3.71)						
		190690056	AA-132-08	190690057	AA-132-08T	8	.173/(4.39)	.197/(5.00)	.173/(4.40)	.490/(12.40)	.055/(1.40)	.031/(0.79)
		190690061	AA-133-10	190690062	AA-133-10T	10	.198/(5.03)					
	190690024	AA-1111-02	190690191	AA-1111-02T	2	.094/(2.39)						
	190690025	AA-1111-04	190690026	AA-1111-04T	4	.119/(3.02)						



SALES DRAWING

- NOTE(S):**  
1. MATERIAL: COPPER.  
2. PLATING: ELECTRO-TIN.  
3. ALL DIMENSIONS IN INCHES/(MM).

WIRE SIZE:  
22-18 AWG  
0.25-1.5 MM<sup>2</sup>

4. PARTS ARE ROHS COMPLIANT.

STDIZE STUD TOL EC NO: WNA2011-0225 DRAWN BY: DRWINETHRODAHL 2010/10/29 CHKD: JMACNEIL 2010/11/17 APPR: JMACNEIL 2010/11/17 C2	QUALITY SYMBOLS  ▽=0 ▽=0	DESCRIPTION	GENERAL TOLERANCES (UNLESS SPECIFIED)	DIMENSION STYLE		SCALE	DESIGN UNITS	THIRD ANGLE PROJECTION			
				IN/MM		---	INCH				
				mm	INCH	DRAWN BY		DATE	TITLE		
				4 PLACES	± --- ± ---	BDEROSS		2000/6/13	RING TONGUE TERMINAL		
				3 PLACES	± --- ± ---	CHECKED BY		DATE	KRIMPTITE, 100 SERIES		
				2 PLACES	± --- ± ---	JHACKNEY		2000/6/13	22-18 AWG		
				1 PLACE	± --- ± ---	APPROVED BY		DATE	MOLEX MOLEX INCORPORATED		
				ANGULAR ± ---°		JMACNEIL		2010/11/17	MOLEX INCORPORATED		
				DRAFT WHERE APPLICABLE MUST REMAIN WITHIN DIMENSIONS		MATERIAL NO.		DOCUMENT NO.		SHEET NO.	
						SEE CHART		SD-19069-004		1 OF 1	
REV				SIZE	THIS DRAWING CONTAINS INFORMATION THAT IS PROPRIETARY TO MOLEX INCORPORATED AND SHOULD NOT BE USED WITHOUT WRITTEN PERMISSION						

# Mouser Electronics

Authorized Distributor

Click to View Pricing, Inventory, Delivery & Lifecycle Information:

Molex:

19069-0047