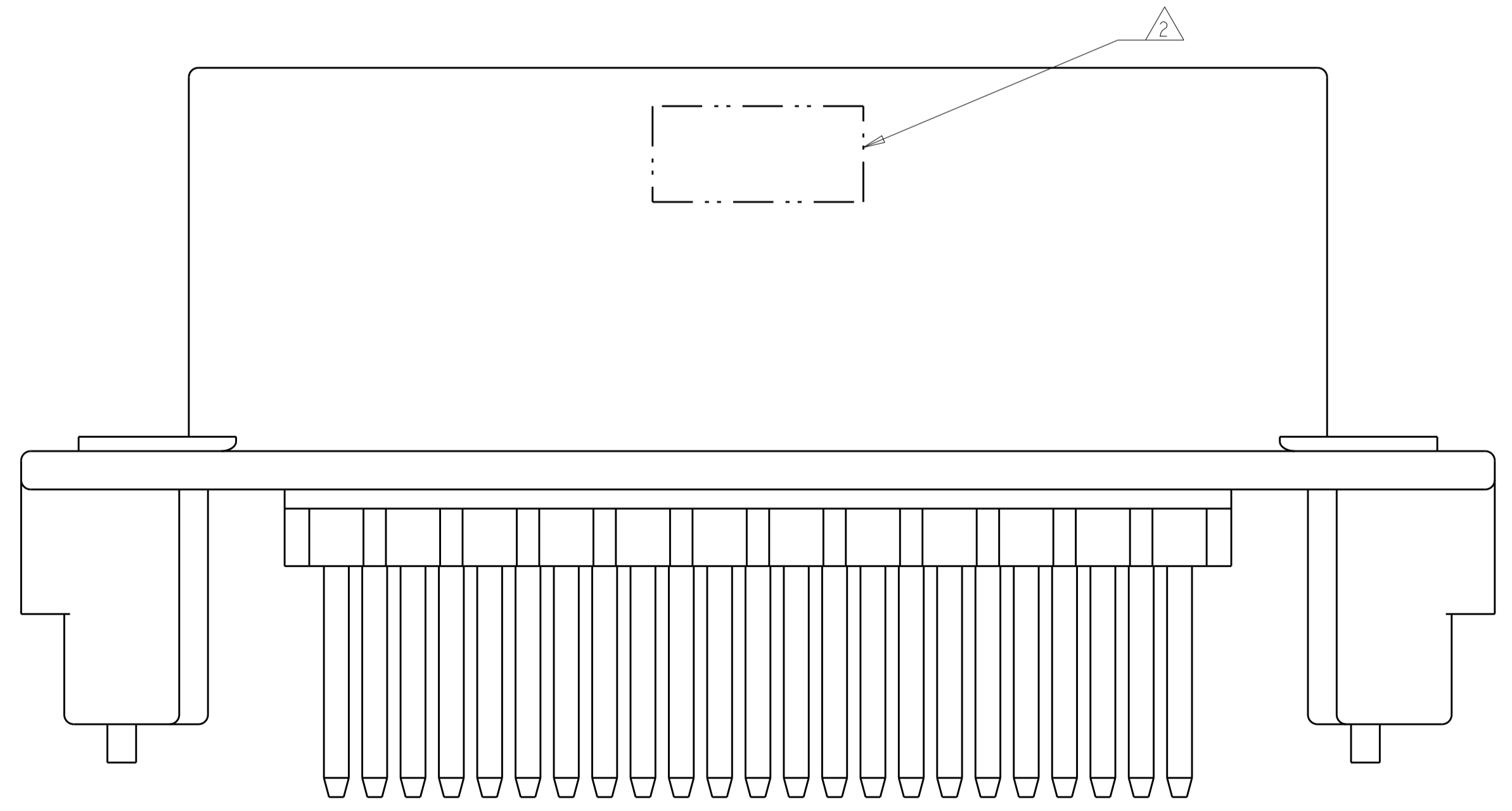
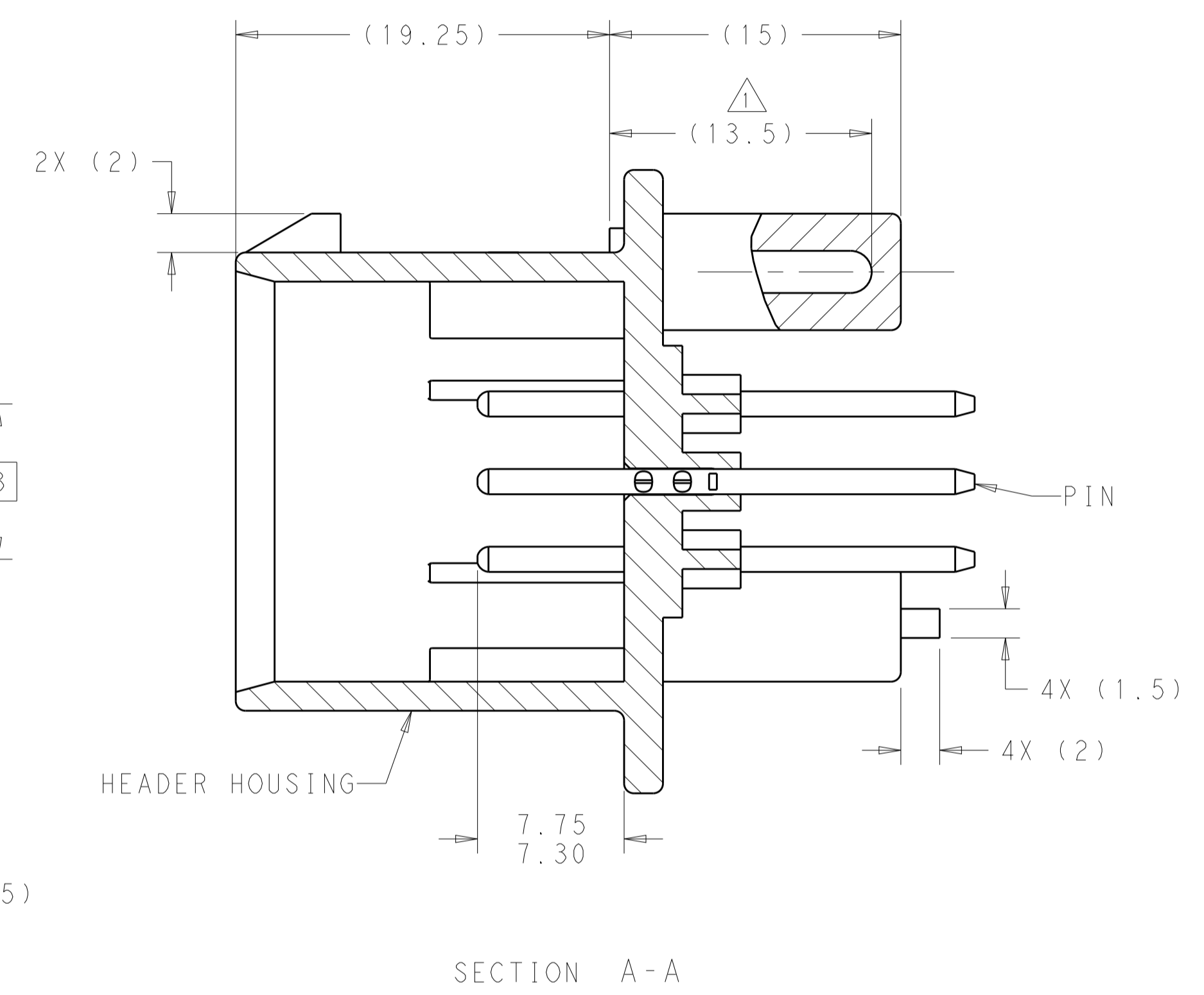
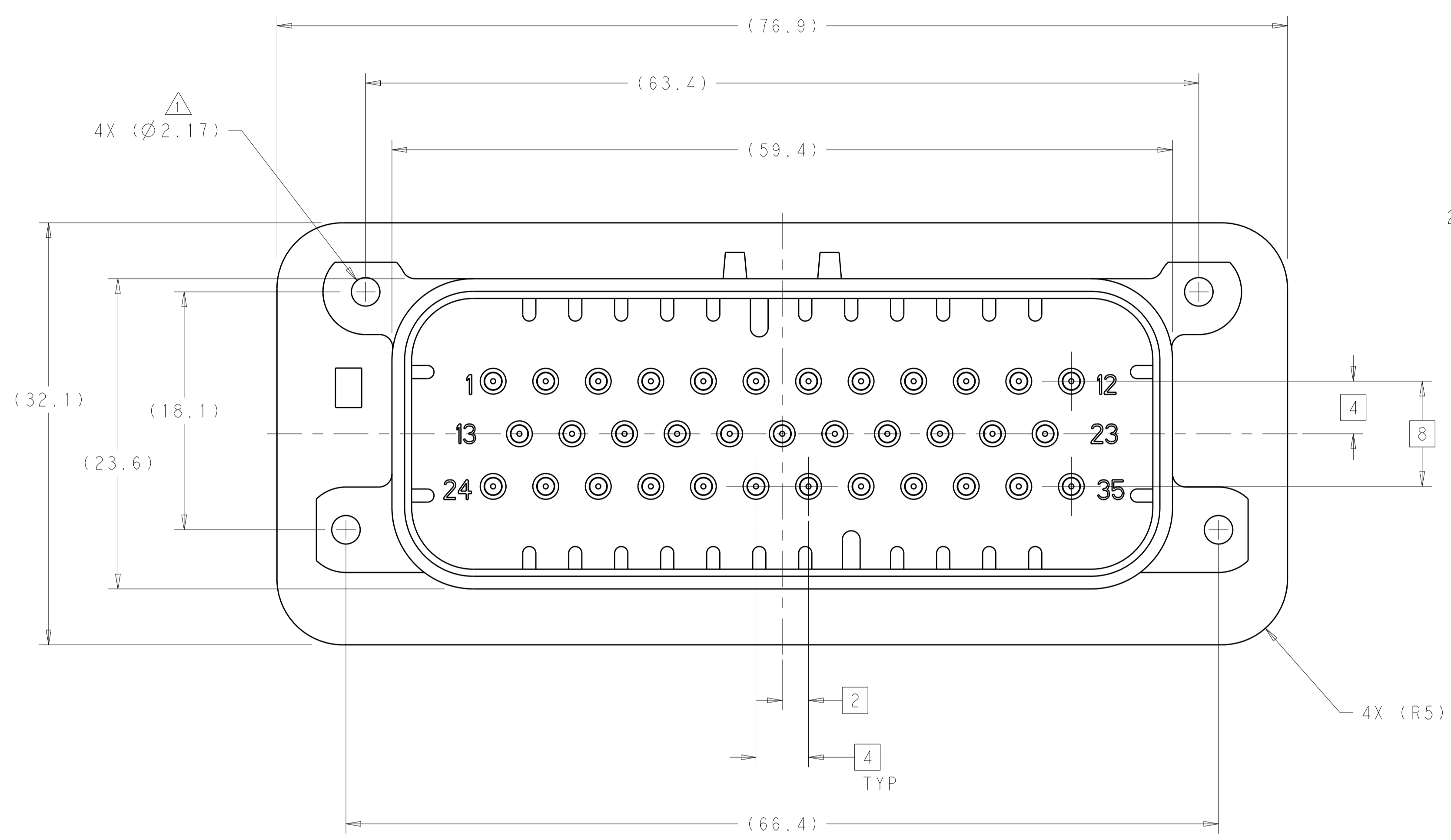


| REVISIONS | | | | |
|-----------|-----|---------------------------|-----------|-------|
| P. | LTN | DESCRIPTION | DATE | APVD |
| A8 | | REVISED PER ECO-15-003872 | 25MAR2015 | DD DS |
| A9 | | REVISED PER ECO-16-003526 | 09MAR2016 | JM DS |

- 1 ACCEPTS #3 SELF TAPPING THREAD FORMING SCREWS OR METRIC EQUIVALENT. DRIVE TO 0.6-0.8 N-m
- 2 DATE CODE IN THIS LOCATION USING 5 DIGIT CODE
FIRST 2 DIGITS = YEAR, SECOND 2 DIGITS = WEEK
LAST DIGIT = DAY.
- 3 MATERIALS: HEADER HOUSING - GLASS FILLED PBT
PINS - TIN OR GOLD PLATED BRASS
- 4 HOUSING COLORS ARE MECHANICALLY KEYED TO MATE ONLY WITH IDENTICALLY COLORED PLUG ASSEMBLIES.
- 5. HEADER MATES TO PLUG ASSEMBLY 776164 WHICH USES REELED TERMINAL 770520 OR LOOSE PIECE TERMINAL 770854.

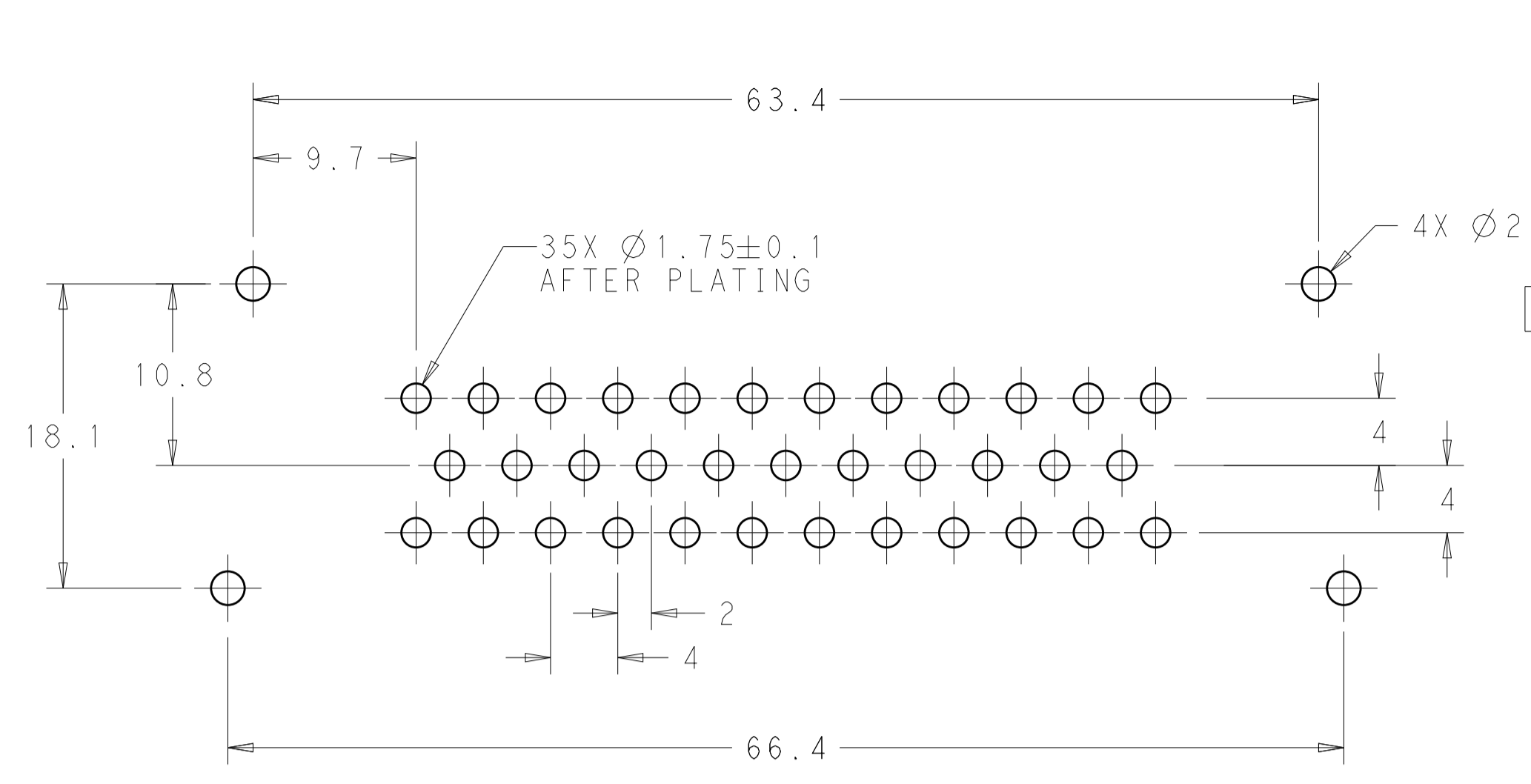


776230-1 & 1-776230-1 SHOWN

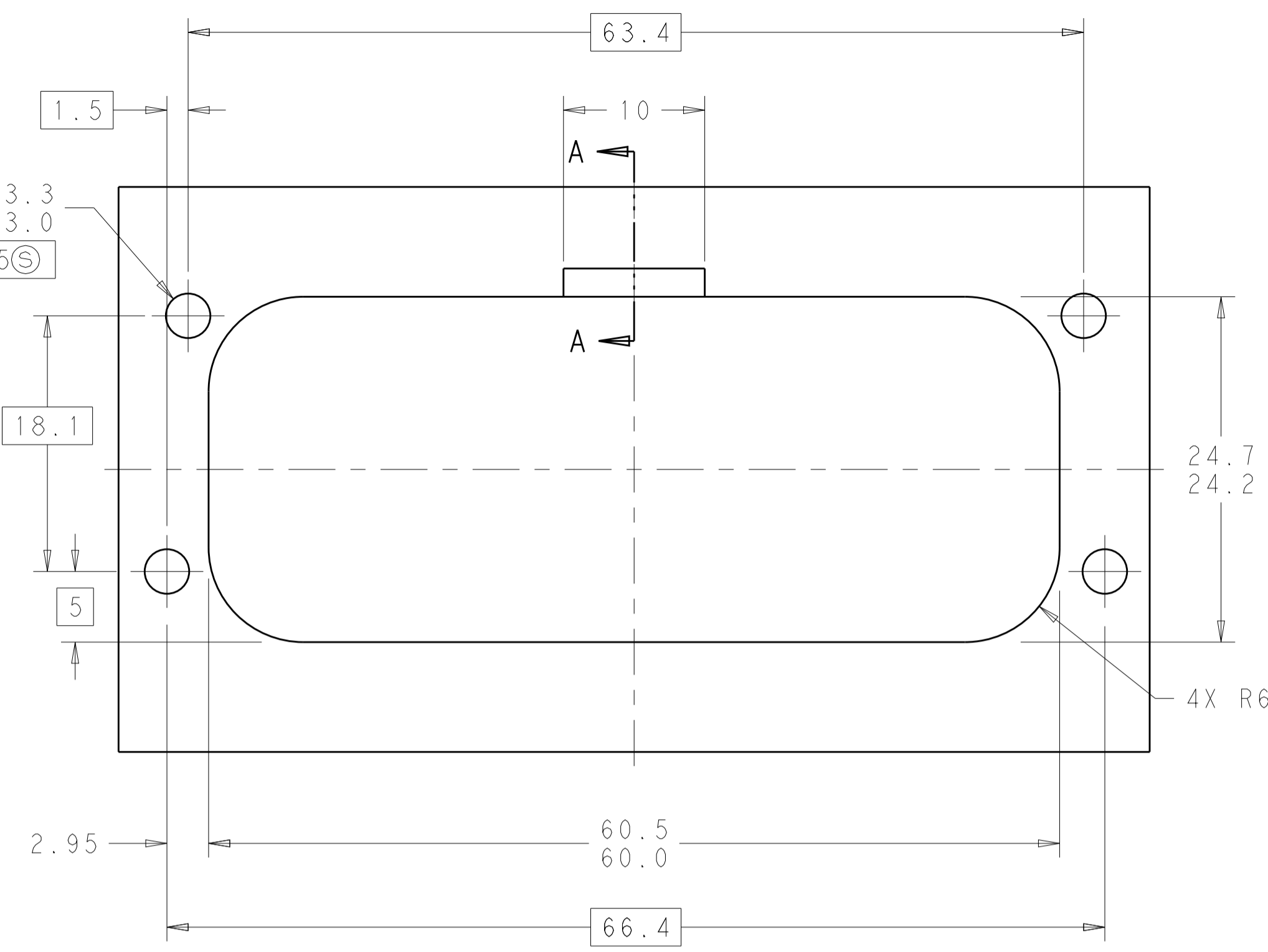
| HEADER COLOR | PLATING | PART NUMBER |
|--------------|----------|-------------|
| ORANGE | DURAGOLD | 1-776230-6 |
| BLUE | DURAGOLD | 1-776230-5 |
| GRAY | DURAGOLD | 1-776230-4 |
| NATURAL | DURAGOLD | 1-776230-2 |
| BLACK | DURAGOLD | 1-776230-1 |
| BLUE | TIN | 776230-5 |
| GRAY | TIN | 776230-4 |
| NATURAL | TIN | 776230-2 |
| BLACK | TIN | 776230-1 |

| | | | |
|--|---|---|--|
| THIS DRAWING IS A CONTROLLED DOCUMENT. DIMENSIONING AND TOLERANCING PER ASME Y14.5M-2009. | | DWN: D. STRAUSSER CHK: D. STRAUSSER DATE: 04FEB2010 DATE: 22MAR2010 DATE: 27APR2010 | NAME: ASSEMBLY, HEADER, 35 POSITION, VERTICAL, AMPSEAL |
| DIMENSIONS: mm TOLERANCES UNLESS OTHERWISE SPECIFIED: 0 PLC ±0.2 1 PLC ±0.13 2 PLC ±0.13 3 PLC ±0.13 4 PLC ±0.13 ANGLES ±0.5° | PRODUCT SPEC: 108-1329 APPLICATION SPEC: 114-16016 | SIZE: A1 CAGE CODE: 00779 DRAWING NO: 776230 | RESTRICTED TO: - SCALE: 4:1 SHEET: 1 OF 2 REV: A9 |
| MATERIAL: 3 FINISH: 3 | | CUSTOMER DRAWING | |

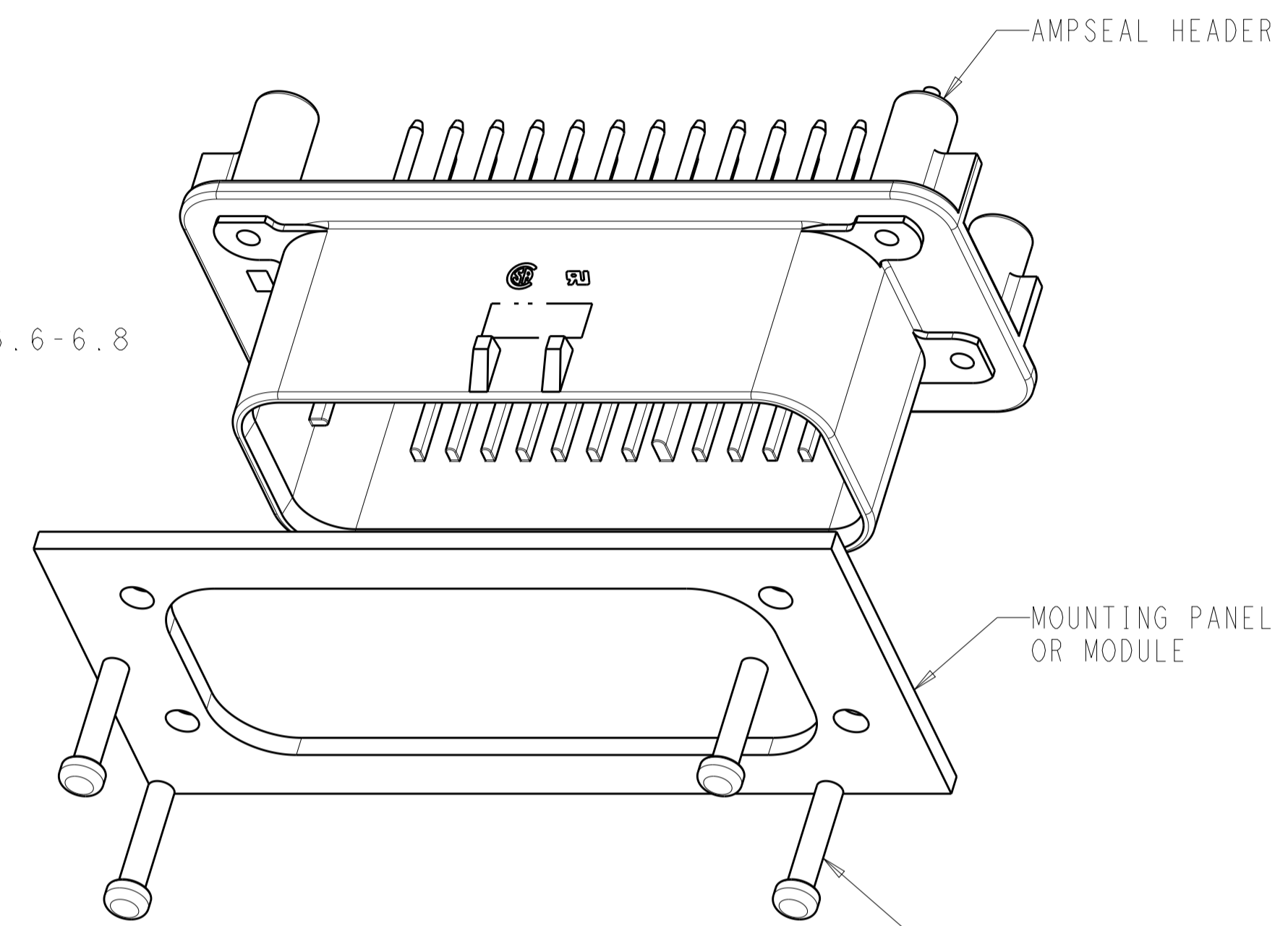
| REVISIONS | | | | |
|-----------|-----|-------------|------|------|
| P. | LTH | DESCRIPTION | DATE | APPV |
| - | - | SEE SHEET 1 | - | - |



RECOMMENDED P.C. BOARD LAYOUT
 FOR 1.57 THICK P.C. BOARD

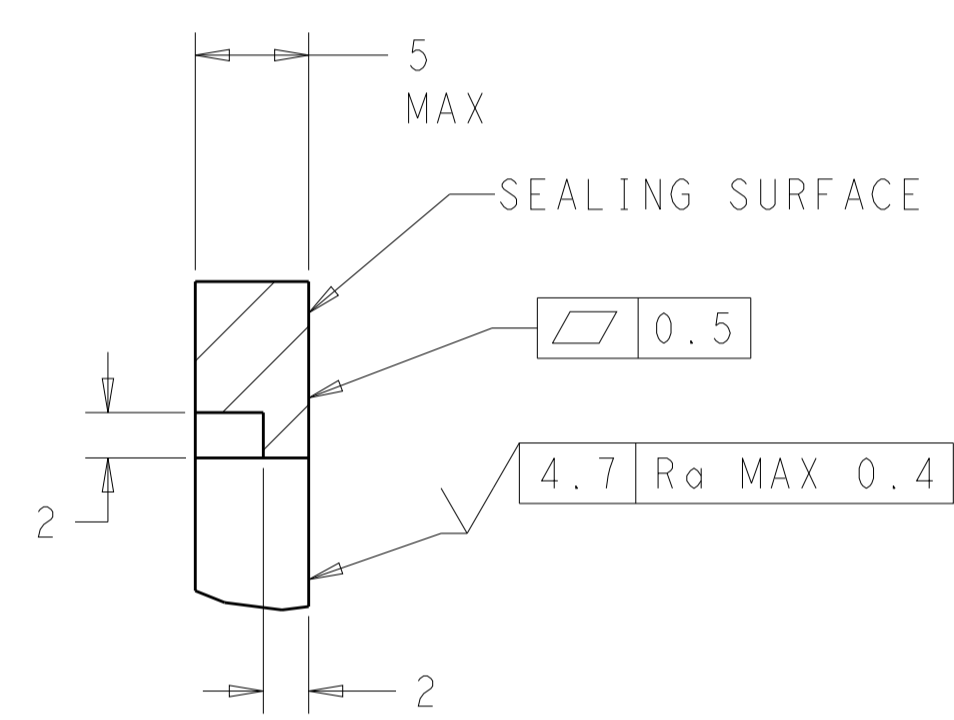


RECOMMENDED MOUNTING HOLE LAYOUT
 FOR 5.0 MAX THICK PANEL

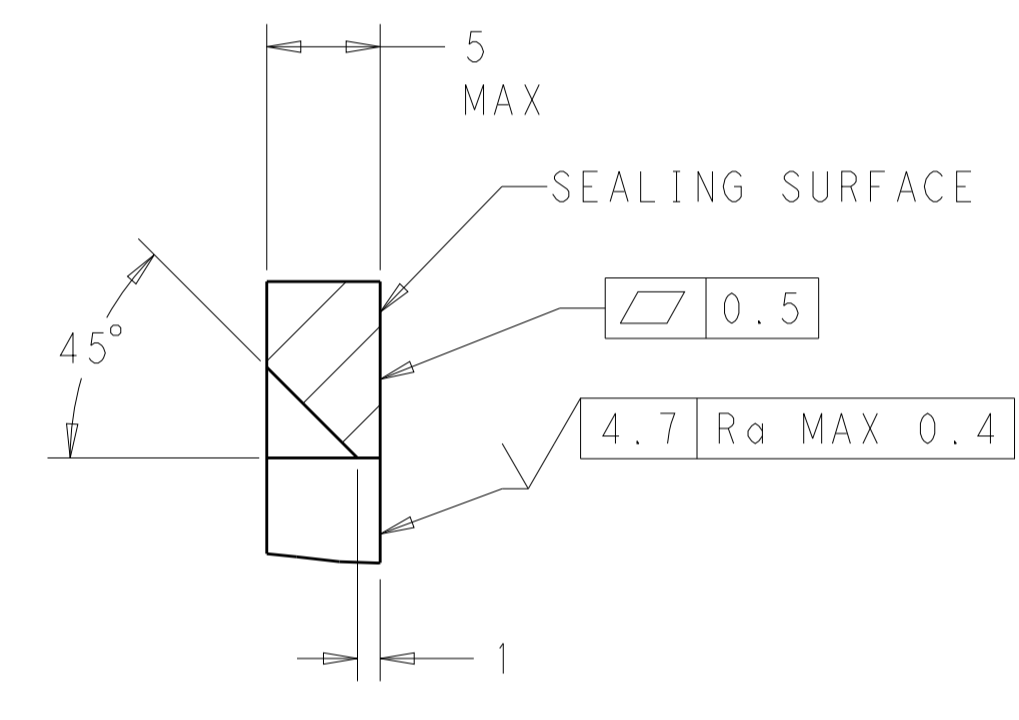


SCALE 2:1

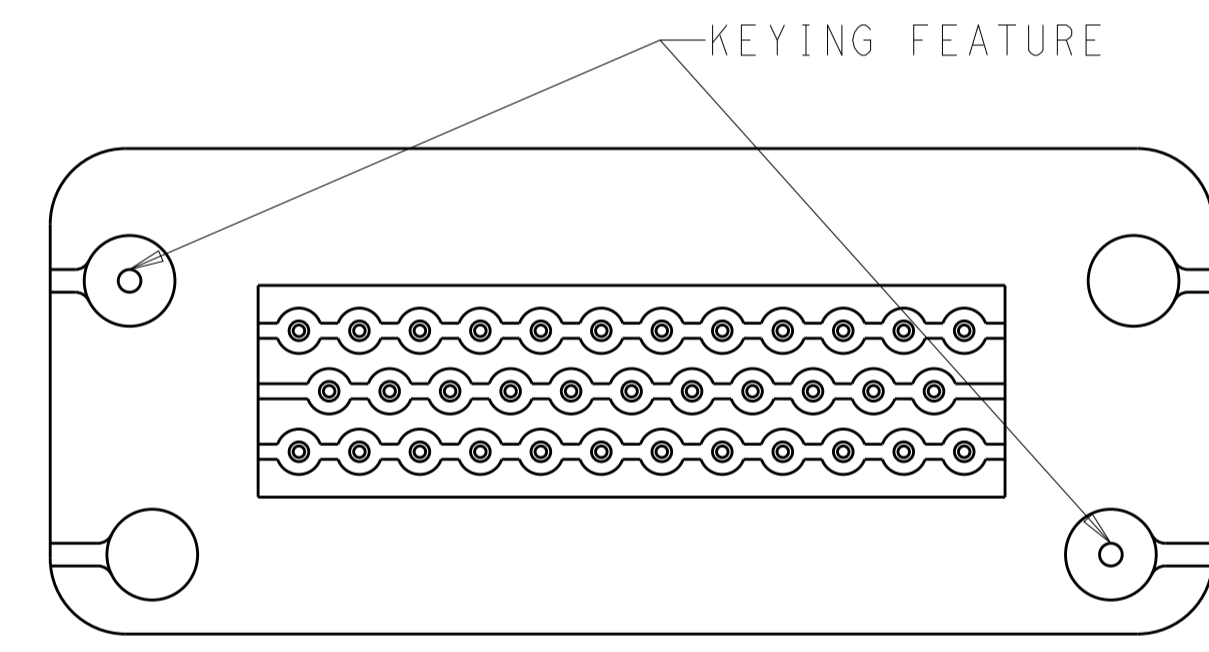
MOUNTING SCREW (4)
 TORQUE TO 0.6N-m TO 0.8N-m



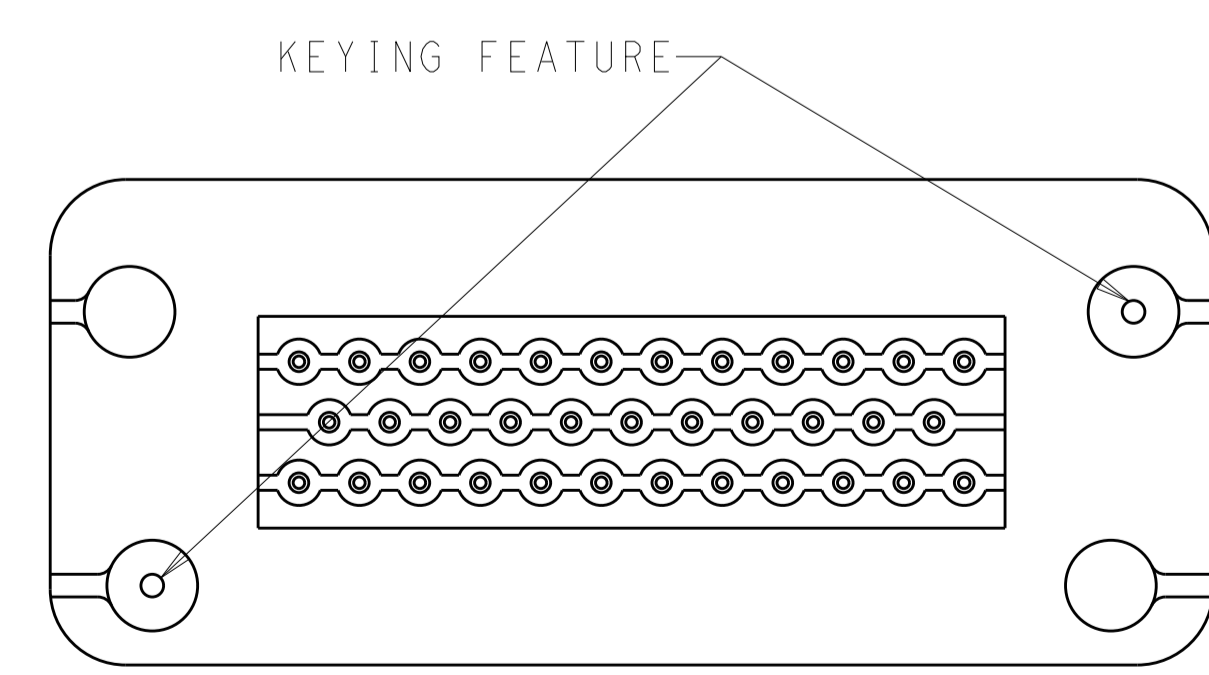
SECTION A-A
 OPTIONAL CONSTRUCTION IF PANEL
 THICKNESS IS GREATER THAN 2.0



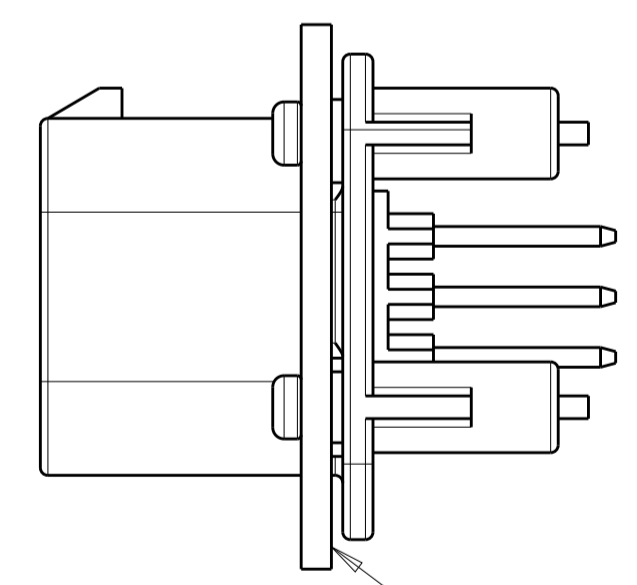
SECTION A-A
 OPTIONAL CONSTRUCTION IF PANEL
 THICKNESS IS GREATER THAN 2.0



KEYING FOR 776230-1, 1-776230-1, 776230-4,
 1-776230-4 AND 1-776230-6
 SCALE 2:1

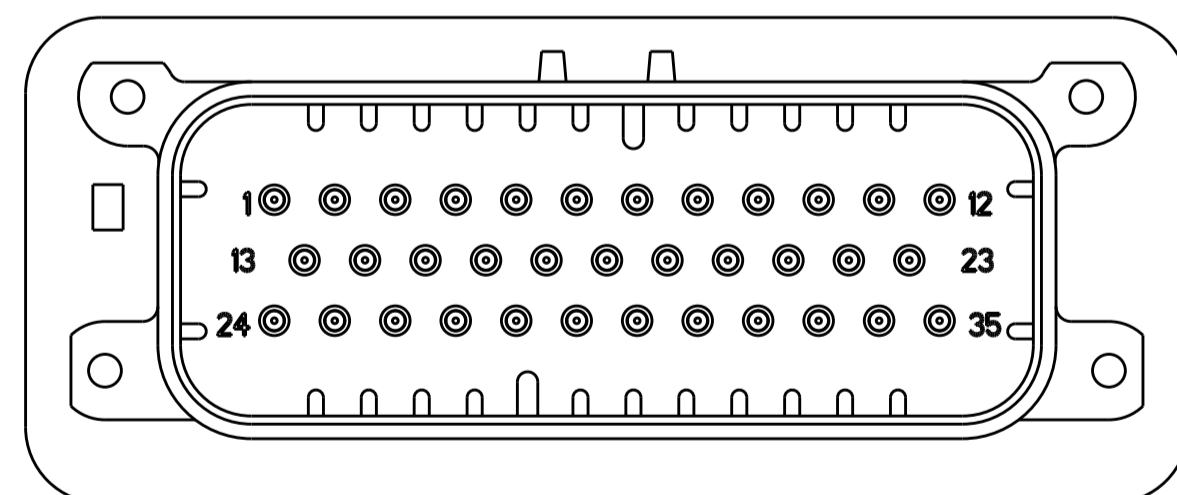


KEYING FOR 776230-2, 1-776230-2, 776230-5
 AND 1-776230-5
 SCALE 2:1

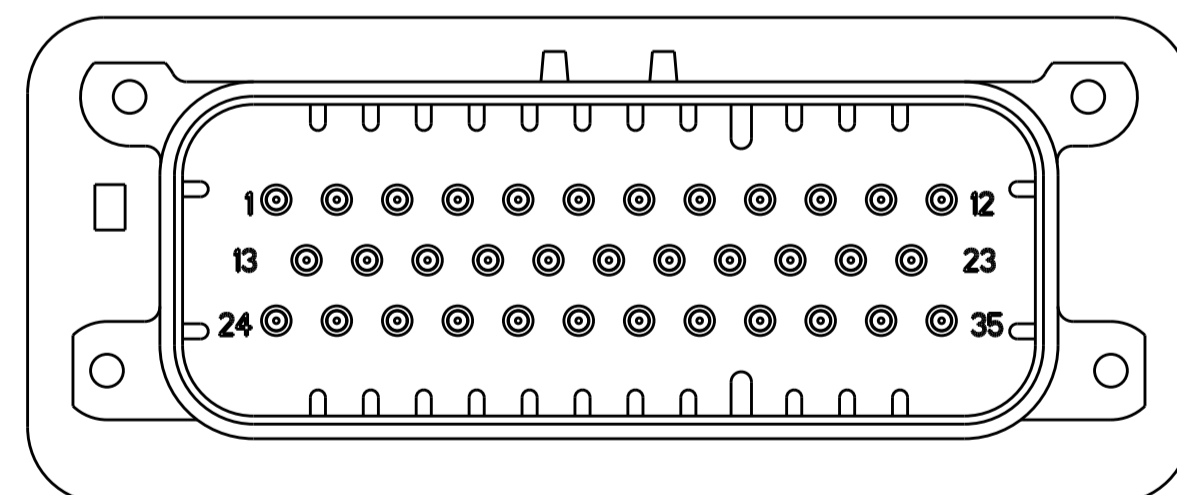


SCALE 2:1

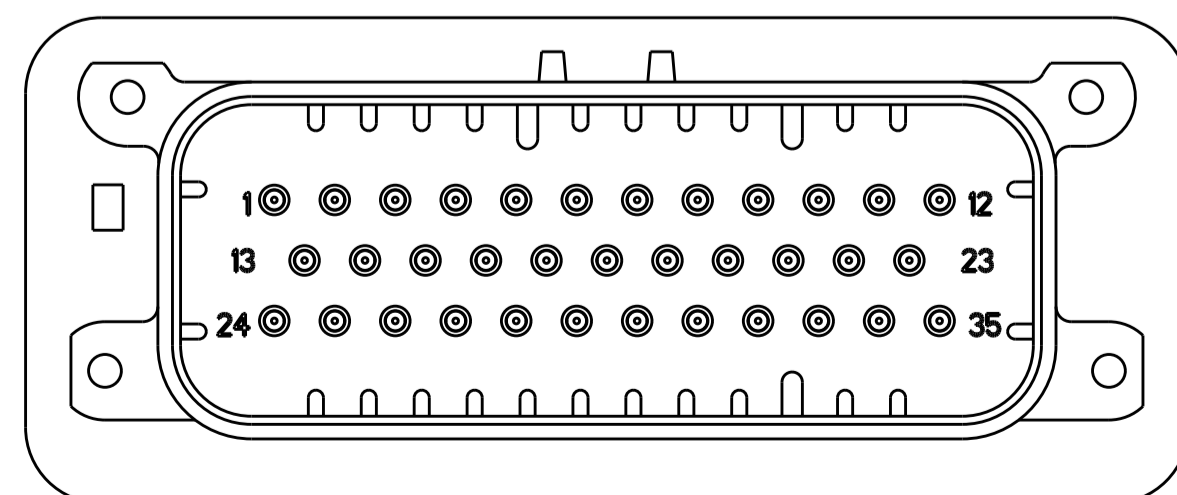
ENSURE THE HEADER IS FLUSH
 TO THE PANEL FACE ALL AROUND
 BEFORE TIGHTENING TO FINAL TORQUE



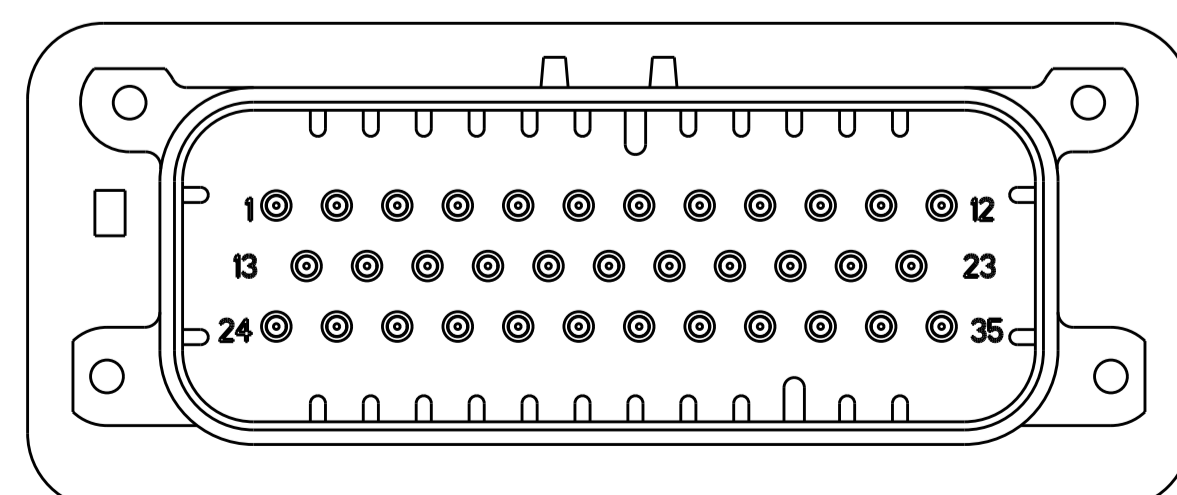
776230-2 & 1-776230-2
 KEY LOCATION
 SCALE 2:1



776230-4 & 1-776230-4
 KEY LOCATION
 SCALE 2:1



776230-5 & 1-776230-5
 KEY LOCATION
 SCALE 2:1



1-776230-6
 KEY LOCATION
 SCALE 2:1

| | | | |
|--|-------|------------------------------|--|
| THIS DRAWING IS A CONTROLLED DOCUMENT. | | OWN: D. STRAUSSER 04FEB2010 | TE Connectivity |
| DIMENSIONS: mm | | CHK: D. STRAUSSER 22MAR2010 | |
| TOLERANCES UNLESS OTHERWISE SPECIFIED: | | APVD: D. STRAUSSER 27APR2010 | NAME: ASSEMBLY, HEADER, 35 POSITION, VERTICAL, AMPSEAL |
| 0 PLC | ± | PRODUCT SPEC | SIZE: CAGE CODE DRAWING NO |
| 1 PLC | ±0.2 | 108-1329 | RESTRICTED TO |
| 2 PLC | ±0.13 | APPLICATION SPEC | A100779C=776230 |
| 3 PLC | ± | 114-16016 | SCALE 4:1 SHEET 2 OF 2 REV A9 |
| 4 PLC | ± | WEIGHT | |
| ANGLES | ± | CUSTOMER DRAWING | |
| MATERIAL | | | |
| FINISH | | | |