

**PLEASE CHECK WWW.MOLEX.COM FOR LATEST PART INFORMATION**

**Part Number:** [0438100002](#)  
**Status:** **Active**  
**Overview:** Mini-Fit BMI Connectors  
**Description:** Mini-Fit BMI Header, Dual Row, Right-Angle, for 1.60mm PCB, 6 Circuits, Tin (Sn) Plating, 260C Wave Solderable, with Retention Clip

**Documents:**

<a href="#">3D Model</a>	<a href="#">Product Specification PS-45750-001-001 (PDF)</a>
<a href="#">Drawing (PDF)</a>	<a href="#">Packaging Specification PK-43810-001-000 (PDF)</a>
<a href="#">Product Specification PS-43810-001-001 (PDF)</a>	<a href="#">RoHS Certificate of Compliance (PDF)</a>

**Agency Certification**

CSA	LR19980
UL	E29179

**General**

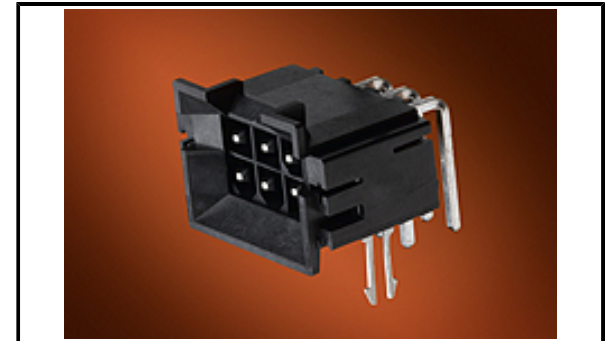
Product Family	PCB Headers
Series	<a href="#">43810</a>
Application	Board-to-Board, Power, Wire-to-Board
Comments	Current = 13A max. per circuit when header is mated to a receptacle loaded with <a href="#">45750</a> Mini-Fit Plus HCS Crimp Terminal Crimped to 16 AWG wire., See Molex product specification PS-45750-001 for additional current de-rating information.

Overview

Product Name	<a href="#">Mini-Fit BMI Connectors</a>
UPC	Mini-Fit BMI 800754911955

**Physical**

Breakaway	No
Circuits (Loaded)	6
Circuits (maximum)	6
Color - Resin	Black
Durability (mating cycles max)	30
Flammability	94V-0
Glow-Wire Capable	No
Material - Metal	Brass
Material - Plating Mating	Tin
Material - Plating Termination	Tin
Material - Resin	High Temperature Thermoplastic
Net Weight	4.366/g
Number of Rows	2
Orientation	Right Angle
PC Tail Length	3.12mm
PCB Locator	No
PCB Retention	Yes
PCB Thickness - Recommended	1.60mm
Packaging Type	Tray
Pitch - Mating Interface	4.20mm
Pitch - Termination Interface	4.20mm
Plating min - Mating	2.540µm
Plating min - Termination	2.540µm
Polarized to Mating Part	Yes
Polarized to PCB	Yes
Shrouded	Fully
Stackable	No
Surface Mount Compatible (SMC)	Yes



*Series image - Reference only*

**EU ELV**

**Not Relevant**

**EU RoHS**

**Compliant**

**REACH SVHC**

Not Contained Per - ED/61/2018 (27 June 2018)

**Halogen-Free**

**Status**

**Not Low-Halogen**

For more information, please visit [Contact US](#)

China ROHS

ELV

RoHS Phthalates

**China RoHS**

Green Image

Not Relevant

Not Contained

**Search Parts in this Series**

[43810](#) Series

**Mates With**

[42385](#) , [42474](#) , [44475](#) , [44516](#) , [5557](#) Dual Row, [245135](#) Mini-Fit Jr. Cable Assembly

Temperature Range - Operating -40° to +105°C  
Termination Interface: Style Through Hole

**Electrical**

Current - Maximum per Contact 13.0A  
Voltage - Maximum 600V AC (RMS)/DC

**Solder Process Data**

Duration at Max. Process Temperature (seconds) 005  
Lead-free Process Capability WAVE  
Max. Cycles at Max. Process Temperature 001  
Process Temperature max. C 240

**Material Info**

**Reference - Drawing Numbers**

Packaging Specification PK-43810-001-000  
Product Specification PS-43810-001-001, PS-45750-001-001  
Sales Drawing SD-43810-011-000

This document was generated on 10/05/2018

**PLEASE CHECK [WWW.MOLEX.COM](http://WWW.MOLEX.COM) FOR LATEST PART INFORMATION**

# Mouser Electronics

Authorized Distributor

Click to View Pricing, Inventory, Delivery & Lifecycle Information:

[Molex:](#)

[43810-0002](#)