

QUARTZ CRYSTAL OSCILLATOR

GENERAL DESCRIPTION

The NJU6391 series is a 3V operation C-MOS quartz crystal oscillator which consists of an oscillation amplifier and a 3-state output buffer.

This series are classed into three versions A, B and C according to their oscillation frequency range mentioned in the line-up table.

The oscillation amplifier incorporates feed-back resistance and oscillation capacitors(Cg, Cd), therefore, it requires no external component except quartz crystal.

Driverbility of the 3-state output buffer is 8mA (sink/source), thus it can drive C-MOS load.

PACKAGE OUTLINE

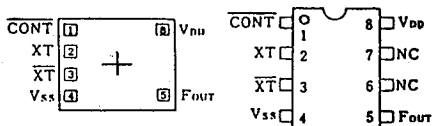

NJU6391XC



NJU6391XE

4
FEATURES

- Low Operating Voltage. -- 2.4~3.6V
- Maximum Oscillation Frequency (See Line-Up Table)
- Low Operating Current
- High Fan-out -- $I_{OL}/I_{OH}=8mA$
- 3-state Output Buffer
- Oscillation Capacitors Cg and Cd on-chip
- NAND Type Oscillation Amplifier (not Inverter)
- Oscillation Stand-by Function (Non Pull-up Resistance)
- Package Outline -- CHIP / EMP 8
- C-MOS Technology

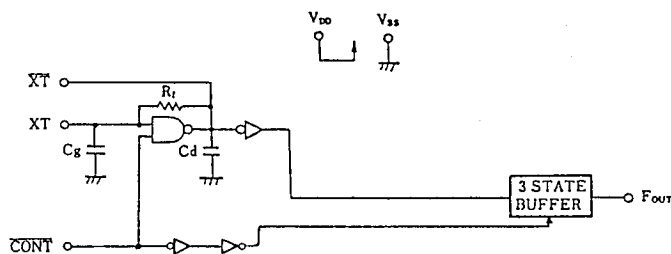
PAD LOCATION/PIN CONFIGURATION

LINE-UP TABLE

Type No.	Recommended Osc. Freq.	Output Freq.	Cg/Cd
NJU6391A	20~35MHz	f ₀	27pF
6391B	35~50MHz		19pF
6391C	45~75MHz		12/14pF

COORDINATES

 Unit: μm

No.	PAD	X	Y
1	CONT	-408	248
2	XT	-408	81
3	XT	-408	-86
4	VSS	-408	-248
5	FOUT	464	-248
8	VDD	464	248

BLOCK DIAGRAM


Chip Size : 1.29 X 0.8mm
 Chip Center : X=0 μm , Y=0 μm
 Chip Thickness : 400 $\mu m \pm 30 \mu m$
 (Note) No.6 and 7 terminals are only for package type information. There are no PAD on the chip.

■ TERMINAL DESCRIPTION

NO.	SYMBOL	F U N C T I O N
1	$\overline{\text{CONT}}$	3-State Output Control
		CONT Output (F_{OUT})
		H Output Frequency f_o
		L Output High Impedance
2	XT	Quartz Crystal Connecting Terminals
3	$\overline{\text{XT}}$	
4	V_{SS}	GND
5	F_{OUT}	Output frequency f_o
8	V_{DD}	+ 3V

(Note) It isn't the pull-up resistance on $\overline{\text{CONT}}$ terminal.

■ ABSOLUTE MAXIMUM RATINGS

 ($T_a=25^\circ\text{C}$)

P A R A M E T E R	SYMBOL	R A T I N G S	UNIT
Supply Voltage	V_{DD}	-0.5 ~ +7.0	V
Input Voltage	V_{IN}	$V_{\text{SS}}-0.5 \sim V_{\text{DD}}+0.5$	V
Output Voltage	V_o	-0.5 ~ $V_{\text{DD}}+0.5$	V
Input Current	I_{IN}	± 10	mA
Output Current	I_o	± 25	mA
Power Dissipation	P_D	200 (EMP)	mW
Operating Temperature Range	T_{opr}	-40 ~ +85	$^\circ\text{C}$
Storage Temperature Range	T_{stg}	-55 ~ +125	$^\circ\text{C}$

(Note) Decoupling capacitor should be connected between V_{DD} and V_{SS} due to the stabilized operation for the circuit.

■ ELECTRICAL CHARACTERISTICS

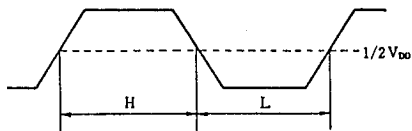
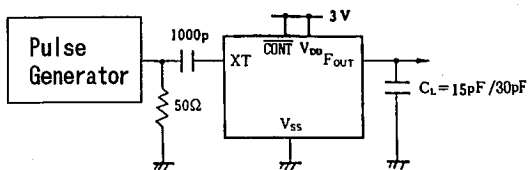
 ($T_a=25^\circ\text{C}$, $V_{\text{DD}}=3\text{V}$)

P A R A M E T E R	SYMBOL	C O N D I T I O N S	MIN	TYP	MAX	UNIT
Operating Voltage	V_{DD}		2.4		3.6	V
Operating Current	I_{DD1}	A Version $f_{\text{OSC}}=24\text{MHz}$, No Load		6	15	mA
	I_{DD2}	B Version $f_{\text{OSC}}=48\text{MHz}$, No Load		9	20	
	I_{DD3}	C Version $f_{\text{OSC}}=48\text{MHz}$, No Load		9	25	
Stand-by Current	I_{st}	$\overline{\text{CONT}}, \overline{\text{XT}}=V_{\text{SS}}$, No Load (Note)			1	μA
Input Voltage	V_{IH}		2.4		3.0	V
	V_{IL}		0		0.6	
Output Current	I_{OH}	$V_{\text{DD}}=5\text{V}$, $V_{\text{OH}}=4.5\text{V}$	8			mA
	I_{OL}	$V_{\text{DD}}=5\text{V}$, $V_{\text{OL}}=0.5\text{V}$	8			
Input Current	I_{IN}	$\overline{\text{CONT}}$ Terminal, $\overline{\text{CONT}}=V_{\text{SS}}$			1	μA
3-St Off-leakage Current	I_{oz}	$\overline{\text{CONT}}=V_{\text{SS}}$, $F_{\text{OUT}}=V_{\text{SS}}$ or V_{DD}			± 0.1	μA
Internal Capacitor	C_g/C_d	A Version		27		pF
		B Version		19		
		C Version		12/14		
Max. Oscillation Freq.	f_{MAX}	A Version	35			MHz
		B Version	50			
		C Version	75			
Output Signal Symmetry	SYM	$C_L=15\text{pF}$ at 1.5V $C_L=30\text{pF}$ at 1.5V	45	50	55	%
Output Signal Rise Time	t_{r1}	$C_L=15\text{pF}$, 10~90%		2	4	ns
		$C_L=30\text{pF}$, 10~90%			6	
Output Signal Fall Time	t_{f1}	$C_L=15\text{pF}$, 90~10%		2	4	ns
		$C_L=30\text{pF}$, 90~10%			6	

(Note) Excluding input current on $\overline{\text{CONT}}$ terminal.

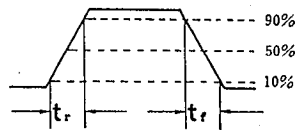
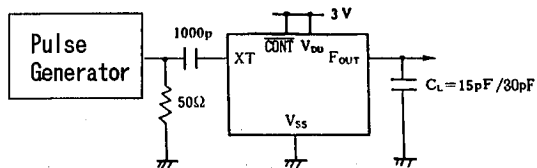
MEASUREMENT CIRCUITS

(1) Output Signal Symmetry



4

(2) Output Signal Rise / Fall Time



NJU6391 Series

MEMO

[CAUTION]

The specifications on this databook are only given for information, without any guarantee as regards either mistakes or omissions. The application circuits in this databook are described only to show representative usages of the product and not intended for the guarantee or permission of any right including the industrial rights.

Mouser Electronics

Authorized Distributor

Click to View Pricing, Inventory, Delivery & Lifecycle Information:

[NJR:](#)

[NJU6391CE](#) [NJU6391AC](#) [NJU6391CC](#) [NJU6391AE](#) [NJU6391BE-TE2](#) [NJU6391BC](#) [NJU6391BE](#) [NJU6391AE-TE1](#)
[NJU6391CE-TE2](#) [NJU6391CE-TE1](#) [NJU6391PE-TE1](#)