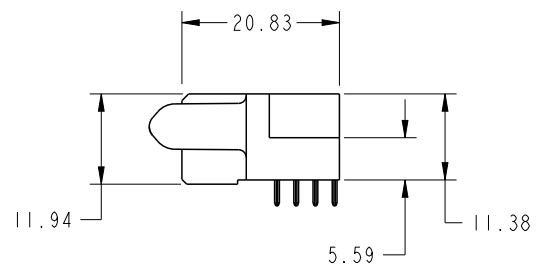
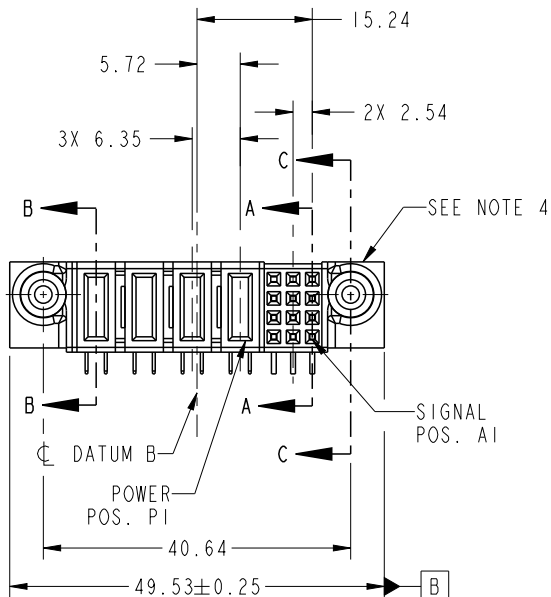




Copyright FCI.

PRODUCT NO.	ROWS	POWER					SIGNAL				
		E2	P4	P3	P2	P1	3	2	1	E1	
51866-050_ _ NOTE: 3	D C B A		PC	PC	PA	PA	H	H	H		
							G	G	G		
							F	F	F		
							E	E	E		



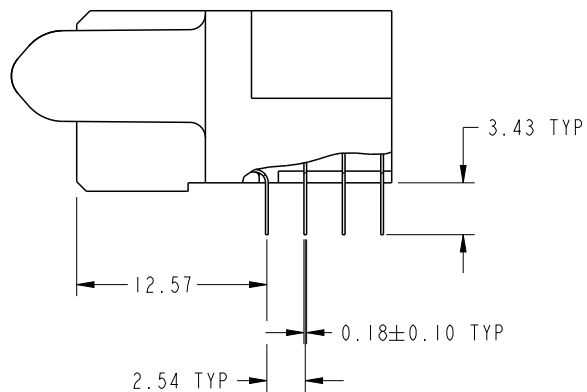
CODE	DIM "M" MATING LENGTH	CONTACT TYPE
PA	0.042 [1.07]	POWER
H	N/A [N/A]	SIGNAL
G	N/A [N/A]	SIGNAL
F	N/A [N/A]	SIGNAL
E	N/A [N/A]	SIGNAL
PC	0.092 [2.34]	POWER

spec ref		SEE NOTES		dr	Guang, Shi	2011/12/09	<div>projection</div> <div></div>	<div>MM</div> <div></div>	size	A4	scale	1:1	
tolerance std SEE NOTES	TOLERANCES UNLESS OTHERWISE SPECIFIED			eng	Luo Weller	2012/09/16			ecn no				-
				chr	-	-			rel level				Released
				appr	Pei-Ming Zheng	2012/09/17			product family		PwrBlade		
surface ✓	linear	0.X	±0.50		title 12S + 4P R/A STB RECEPTACLE				dwg no	51866-050		rev A	
		0.XX	±0.25										
		0.XXX	±0.10										
	angular	0°	±2°		www.fci.com	cat. no.	-	Product - Customer Drw			sheet 1 of 4		

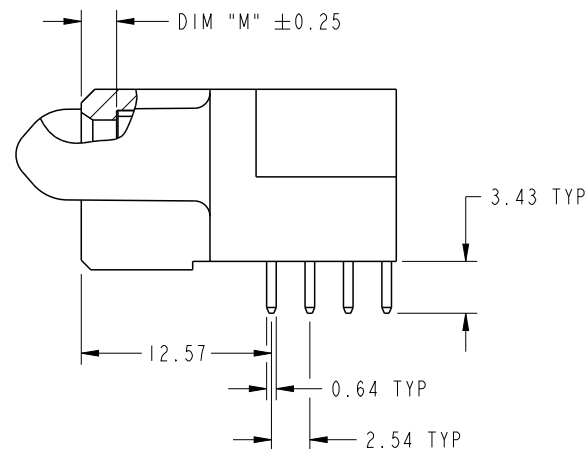
PrintE File - REV C - 2009-06-09

PRODUCT NUMBER

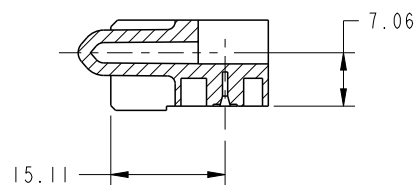
51866-050--  
NOTE: 3



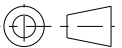


BROKEN-OUT SECTION A-A  
SCALE 2:1



BROKEN-OUT SECTION B-B  
SCALE 2:1

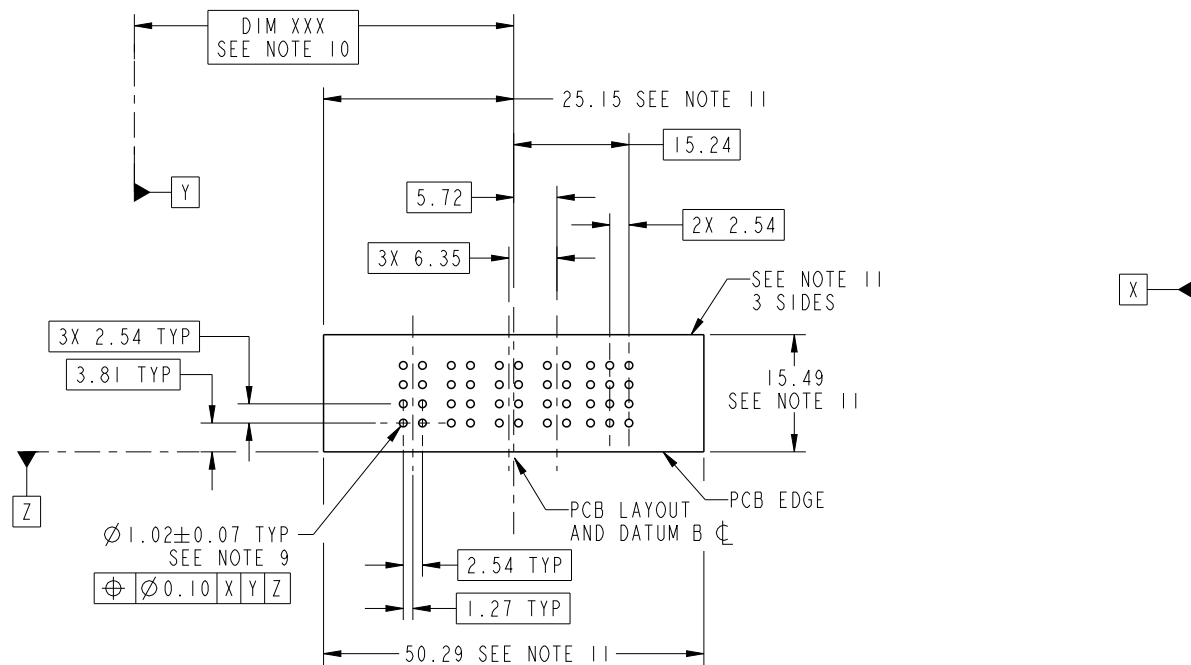


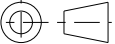


SECTION C-C

dr	Guang, Shi	2011/12/09	<div>projection</div> <div></div>	<div>MM</div> <div></div>	size	A4	scale	1:1
eng	Luo Weller	2012/09/16			ecn no	-		
chr	-	-			rel level	Released		
appr	Pei-Ming Zheng	2012/09/17	product family		PwrBlade			
		title			12S + 4P		rev	
					R/A STB RECEPTACLE		A	
www.fci.com		cat. no.			-		Product - Customer Drw	
							sheet 2 of 4	
							51866-050	

PRODUCT NUMBER

51866-050\_\_  
NOTE: 3



dr	Guang, Shi	2011/12/09	<div>projection</div> <div></div>	<div>MM</div> <div></div>	size	A4	scale	1:1	
eng	Luo Weller	2012/09/16			ecn no	-			
chr	-	-							
appr	Pei-Ming Zheng	2012/09/17	product family		PwrBlade	rel level		Released	
<div></div>		title			12S + 4P	dwg no		51866-050	rev
		R/A STB RECEPTACLE							A
www.fci.com		cat. no.		-	Product - Customer Drw			sheet 3 of 4	



Copyright FCI.

PRODUCT NUMBER  
51866-050\_\_  
NOTE: 3

NOTES:

1. DIMENSIONS AND TOLERANCES ARE IN ACCORDANCE WITH  
ASME Y14.5M, 1994 UNLESS OTHERWISE SPECIFIED.

CONNECTOR NOTES:

- 2. HOUSING MATERIAL: UL 94 V-0 GLASS FILLED HIGH-TEMP THERMOPLASTIC  
POWER CONTACT MATERIAL: COPPER ALLOY  
SIGNAL PIN MATERIAL: COPPER ALLOY
- 3. SEE ITEM 5 & 6 IN PRINT 10064183 FOR PLATING SPEC OF 51866-050 AND 51866-050LF RESPECTIVELY.
- 4. MANUFACTURER'S NAME, DATE CODE AND OPTIONAL P/N TO APPEAR ON  
THIS SURFACE. THE P/N CAN BE OMITTED IF THERE IS NOT ENOUGH SPACE  
ON THIS SURFACE.
- 5. PRODUCT SPECIFICATION GS-12-149.  
APPLICATION SPECIFICATION BUS-20-067.
- 6. PACKAGED IN TRAYS.

PCB NOTES:

- 7. ALL HOLE DIAMETERS ARE FINISHED HOLE SIZE.
- 8. MOUNTING HOLES, WHERE APPLICABLE, ARE UNPLATED.
- 9.  $\varnothing 1.151 \pm 0.025$  DRILLED HOLES PLATED WITH  
0.008 MIN SnPb OR Sn OVER 0.03  
TO 0.08 Cu PLATING TO ACHIEVE  
 $\varnothing 1.02 \pm .07$  HOLE.
- 10. "DIM XXX" TO BE DETERMINED BY THE CUSTOMER.
- 11. CONNECTOR KEEP-OUT ZONE.
- 12. THE VOID CORING IN BETWEEN POWER MODULES, SIGNAL  
MODULES AND END MODULES ARE OPTIONAL AND THE SHAPE  
MAY BE DIFFERENT FOR OPTIMIZE THE MOLDING PROCESS. THE  
VOID CORING WILL NOT EFFECT TO PRODUCT FUNCTION.

dr	Guang, Shi	2011/12/09	<div>projection</div> <div></div>	<div>MM</div> <div></div>	size	A4	scale	1:1	
eng	Luo Weller	2012/09/16			ecn no				-
chr	-	-			rel level				Released
appr	Pei-Ming Zheng	2012/09/17	product family		PwrBlade				
		title			dwg no		rev		
		12S + 4P			51866-050		A		
		R/A STB RECEPTACLE							
www.fci.com		cat. no.	-		Product - Customer Drw			sheet 4 of 4	

# Mouser Electronics

Authorized Distributor

Click to View Pricing, Inventory, Delivery & Lifecycle Information:

[FCI / Amphenol:](#)

[51866-050LF](#)