

PLEASE CHECK WWW.MOLEX.COM FOR LATEST PART INFORMATION

Part Number: [0988171028](#)
Status: **Active**
Overview: NSCC - New Standard Casing Contact
Description: NSCC single part, Unsealed, 1.50mm, Female Housing, 3.33mm Pitch NSCC, Wire to Wire, 2 Circuits, Gray

Documents:

3D Model	Application Specification AS-98821-001-001 (PDF)
Drawing (PDF)	Packaging Specification PK-31301-635-001 (PDF)
Product Specification PS-98821-001-001 (PDF)	RoHS Certificate of Compliance (PDF)

Application tooling part link

Application Tooling Part Link 63813-3800

General

Product Family	Crimp Housings
Series	98817
Application	Power, Wire-to-Wire
Overview	NSCC - New Standard Casing Contact
Product Name	NSCC
UPC	822348761371

Physical

Breakaway	No
Circuits (maximum)	2
Circuits Detail	2 x 1.5mm female terminals
Color - Resin	Gray
Gender	Receptacle
Glow-Wire Capable	No
Keying to Mating Part	Yes
Lock to Mating Part	Yes
Material - Resin	Polyester
Net Weight	1.640/g
Number of Rows	1
Packaging Type	Carton
Panel Mount	No
Pitch - Mating Interface	3.33mm
Pitch - Termination Interface	3.33mm
Polarized to Mating Part	Yes
Ports	1
Temperature Range - Operating	-40° to +100°C

Electrical

Current - Maximum per Contact 10.0A

Solder Process Data

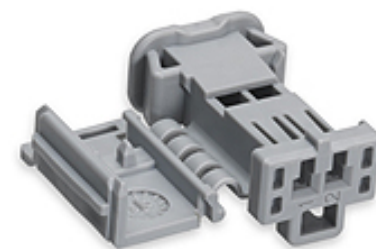
Lead-free Process Capability N/A

Material Info

Engineering Number 10008328

Reference - Drawing Numbers

Application Specification	AS-98821-001-001
Packaging Specification	PK-31301-635-001
Product Specification	PS-98821-001-001
Sales Drawing	SD-98815-002, SD-98817-001



Series image - Reference only

EU ELV

Compliant

EU RoHS

Compliant

REACH SVHC

Not Contained Per - ED/71/2019 (16 July 2019)

Halogen-Free

Status

Not Relevant

For more information, please visit [Contact US](#)

China ROHS

Not Relevant

ELV

Compliant

RoHS Phthalates

Not Contained

Search Parts in this Series

[98817](#) Series

Mates With

[988221028](#) (Male Receptacle Housing)

Use With

Female Terminal NSCC [988971109](#) , [988971119](#) , [988971129](#) or FCI Female Terminal 1.5 Sicma 3

Application Tooling | FAQ

Tooling specifications and manuals are found by selecting the products below. Crimp Height Specifications are then contained in the Application Tooling Specification document.

Global

Description

Product #

Extractor Tool for Unsealed Receptacle Connectors	638133800
---	---------------------------

This document was generated on 09/17/2019

PLEASE CHECK WWW.MOLEX.COM FOR LATEST PART INFORMATION

Mouser Electronics

Authorized Distributor

Click to View Pricing, Inventory, Delivery & Lifecycle Information:

[Molex:](#)

[98817-1028](#)