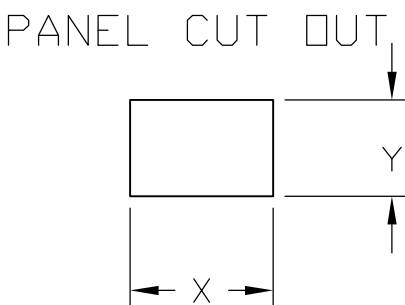
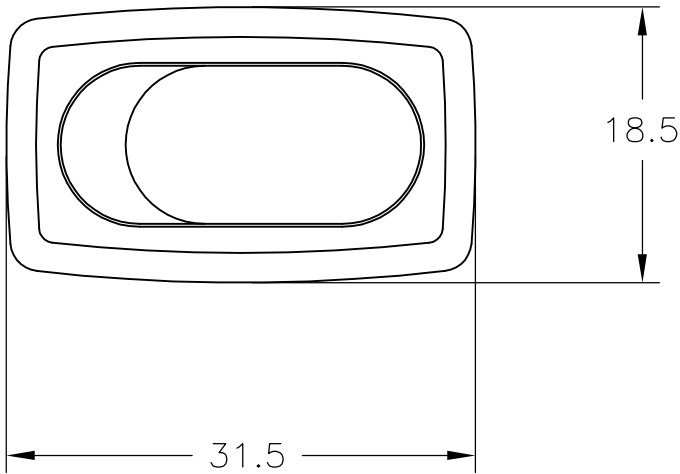


THIS DRAWING IS UNPUBLISHED.

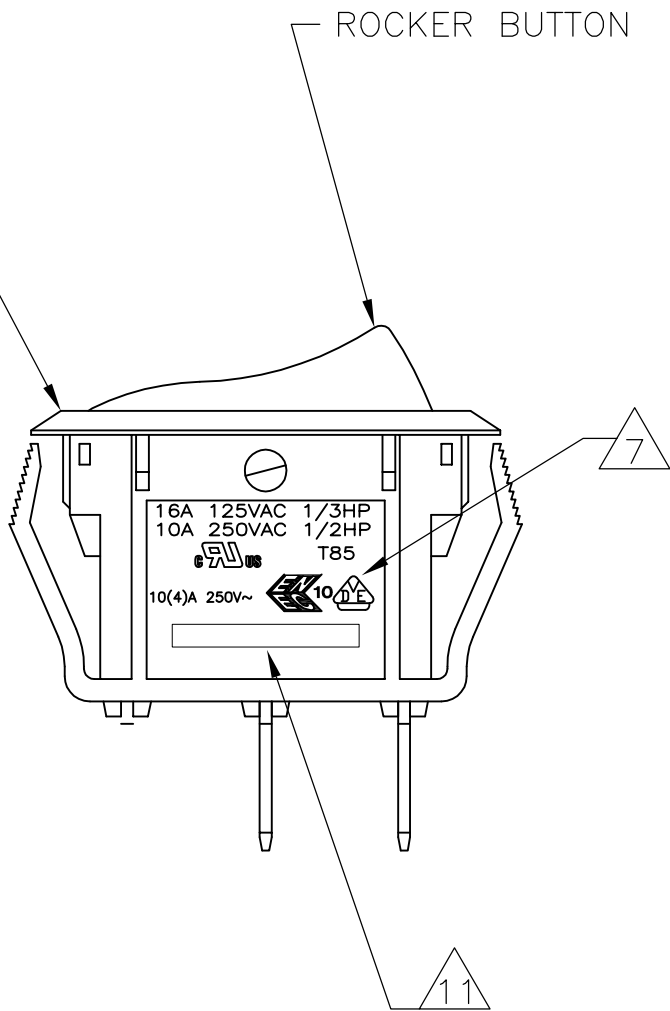
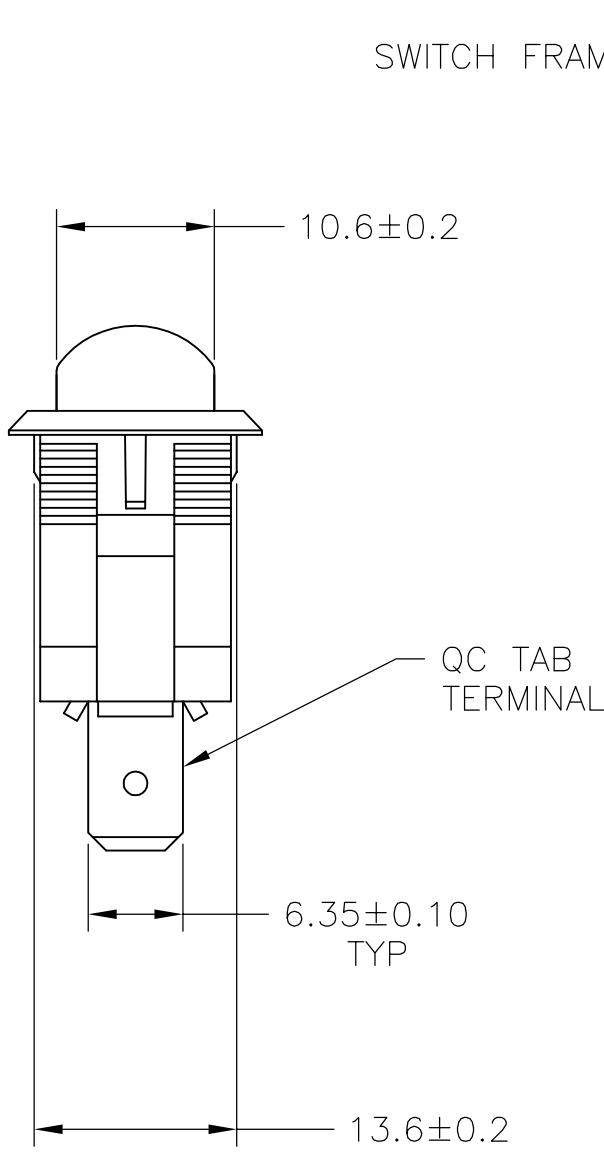
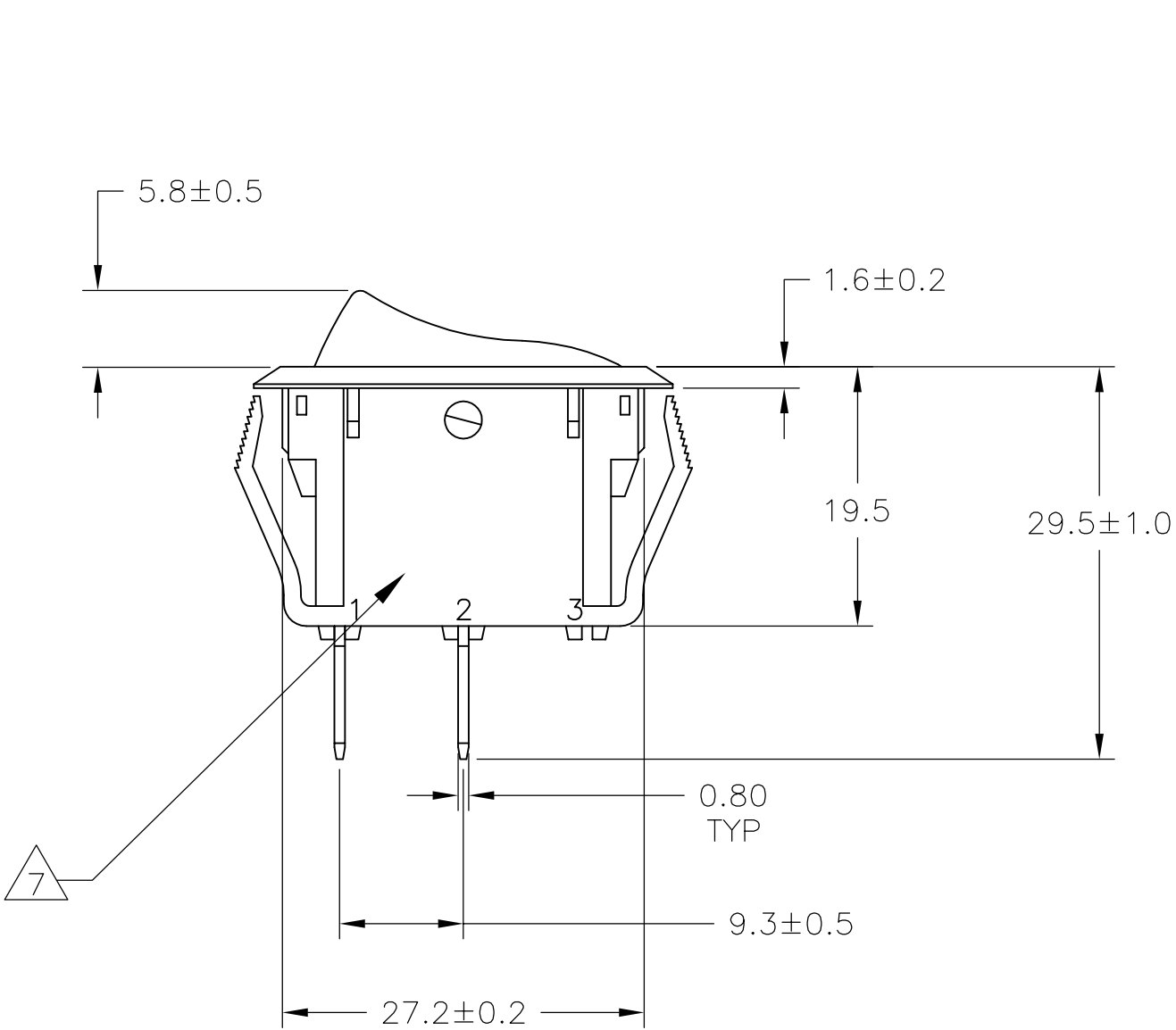
RELEASED FOR PUBLICATION

© COPYRIGHT — By — ALL RIGHTS RESERVED.

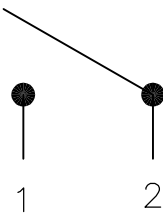
REVISIONS					
P	LTR	DESCRIPTION	DATE	DWN	APVD
	F2	REVISED PER ECO-11-004917	11MAR11	RK	HMR
	F3	REVISED PER ECO-16-017354	07MAR2017	RK	AS



4.00-5.00	28.0-0.1	13.8+0.1
3.00-4.00	27.8-0.1	13.8+0.1
0.75-3.00	27.6-0.1	13.8+0.1
PANEL THICKNESS	X	Y



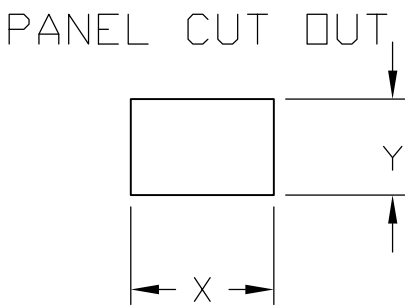
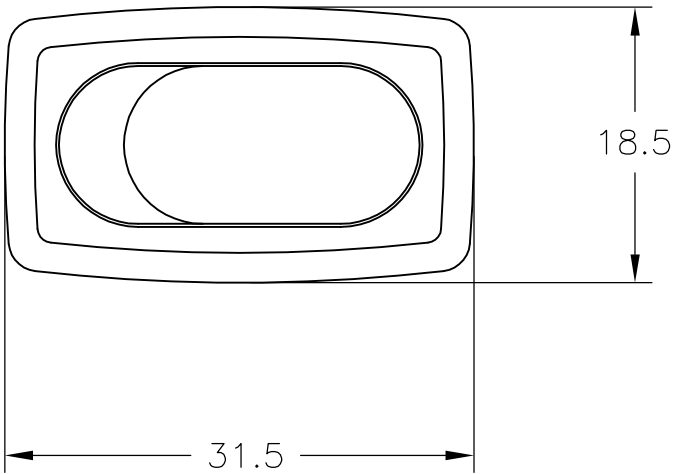
SWITCH FUCTION A1
CIRCUIT DIAGRAM



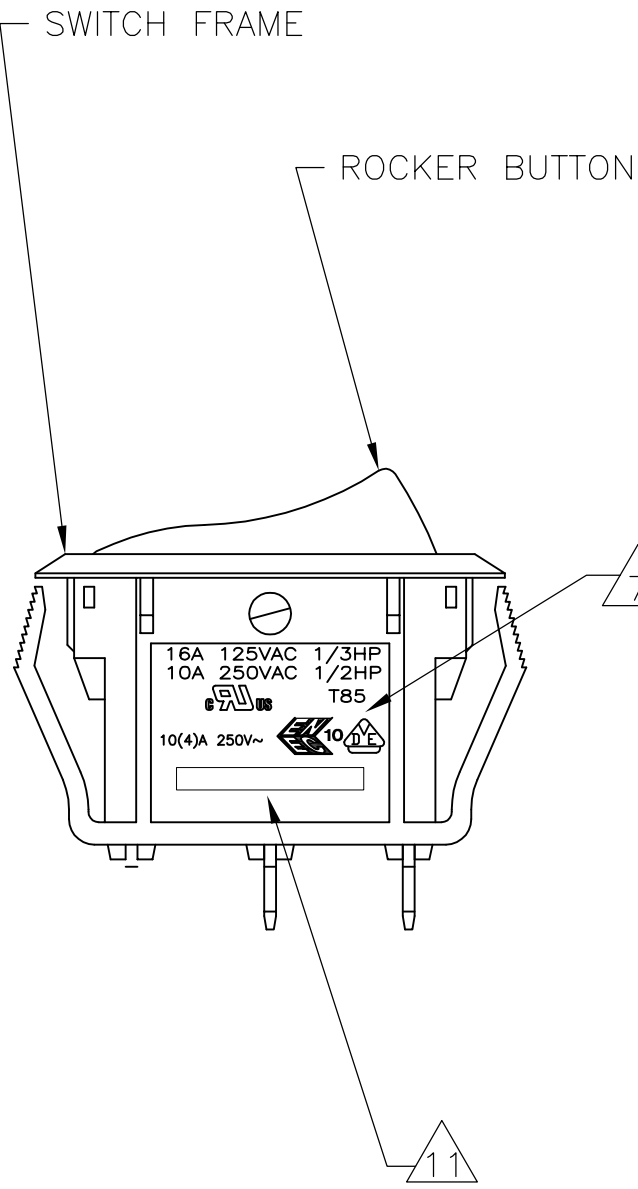
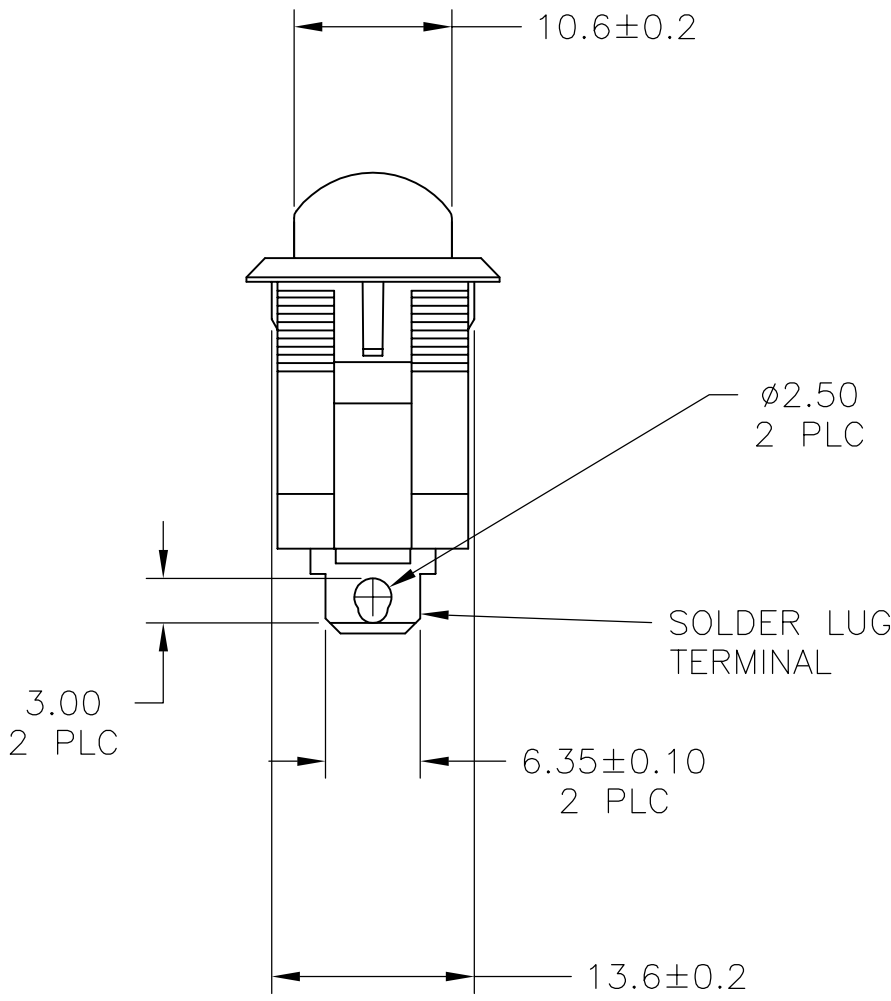
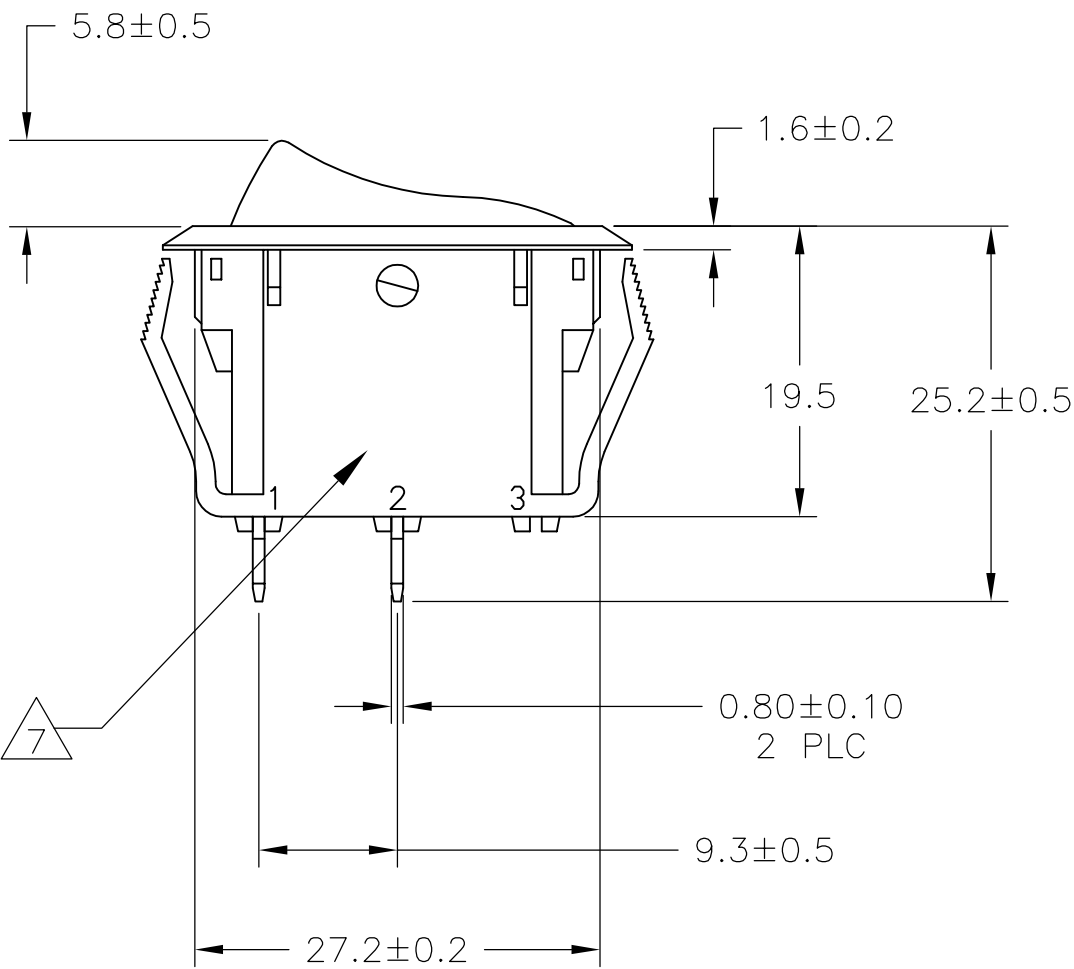
1571091-1 SHOWN

THIS DRAWING IS A CONTROLLED DOCUMENT.		DWN BSV 01APR04	TE Connectivity	
DIMENSIONS: mm		CHK J.MOSIER		
TOLERANCES UNLESS OTHERWISE SPECIFIED:		APVD JP	NAME	
0 PLC ± -		PRODUCT SPEC		
1 PLC ± 0.30		APPLICATION SPEC	POWER ROCKER SWITCH 13.8mmX27.6mm PANEL SIZE SPST, 2 TERMINALS, NON-ILLUMINATED	
2 PLC ± 0.05		WEIGHT		
3 PLC ± -		CUSTOMER DRAWING	SIZE A2	CAGE CODE 00779
4 PLC ± -		SCALE 1:1	DRAWING NO. C-1571091	RESTRICTED TO -
ANGLES ± -		SHEET 1 of 3	REV F3	
FINISH				

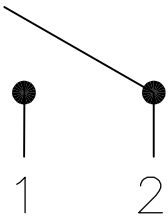
REVISIONS					
P	LTR	DESCRIPTION	DATE	DWN	APVD
	—	SEE SHEET 1	—	—	—



4.00–5.00	28.0–0.1	13.8+0.1
3.00–4.00	27.8–0.1	13.8+0.1
0.75–3.00	27.6–0.1	13.8+0.1
PANEL THICKNESS	X	Y



SWITCH FUCTION A1
CIRCUIT DIAGRAM



1571091–4 SHOWN

THIS DRAWING IS A CONTROLLED DOCUMENT.		DWN — BSV 01APR04	TE Connectivity		
DIMENSIONS: mm		CHK — J.MOSIER			
		APVD — JP	POWER ROCKER SWITCH 13.8mmX27.6mm PANEL SIZE SPST, 2 TERMINALS, NON-ILLUMINATED		
		PRODUCT SPEC —			
		APPLICATION SPEC —			
MATERIAL		WEIGHT 0	SIZE A2	CAGE CODE 00779	DRAWING NO. 1571091
FINISH		CUSTOMER DRAWING		SCALE 1:1	SHEET 2 of 3
				REV F3	

Mouser Electronics

Authorized Distributor

Click to View Pricing, Inventory, Delivery & Lifecycle Information:

[TE Connectivity:](#)

[PRBSA1-16L-BB000](#)