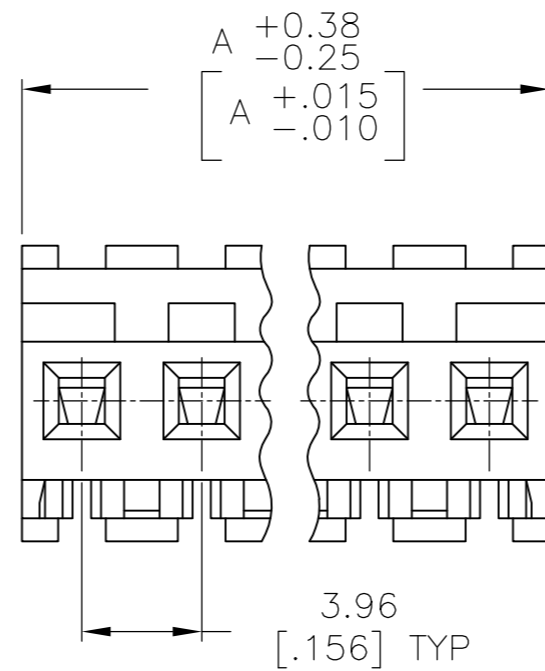
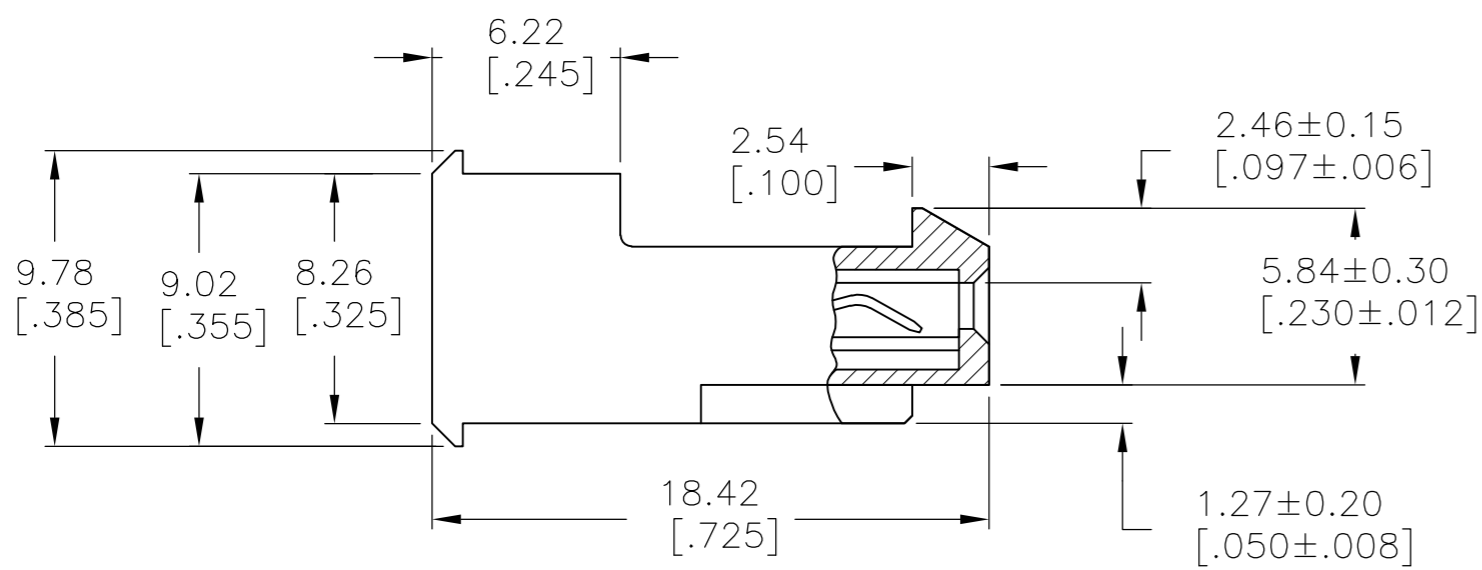
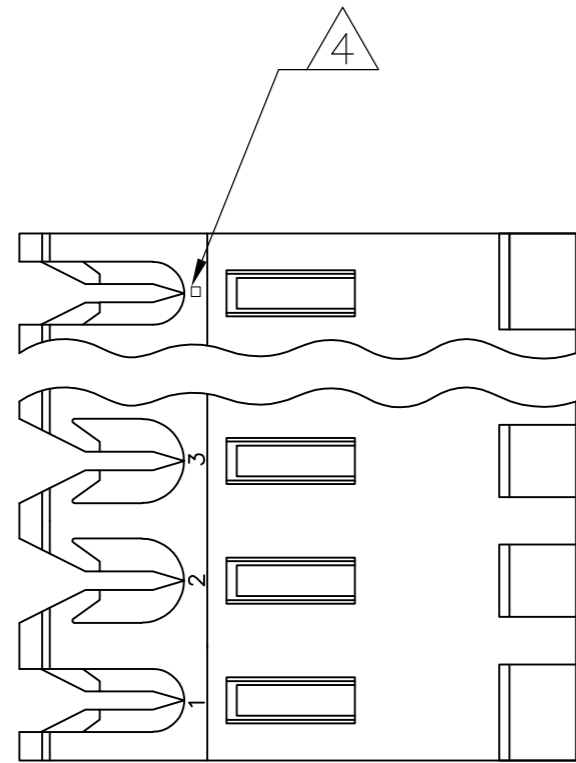


THIS DRAWING IS UNPUBLISHED. RELEASED FOR PUBLICATION
 © COPYRIGHT - By - TE CONNECTIVITY ALL RIGHTS RESERVED.

| LOC | DIST | REVISIONS | | | | | |
|-----|------|-----------|-----|---------------------------|-----------|-----|------|
| CM | 00 | P | LTR | DESCRIPTION | DATE | DWN | APVD |
| | | N2 | | REVISED PER ECR-15-006687 | 26OCT2015 | NK | NL |



1 MATERIAL: CONNECTOR - NYLON UL94V-2 (YELLOW).
 CONTACTS - 0.00076[.000030] GOLD THK OR 0.00008[.000003] MIN THK
 GOLD FLASH OVER 0.00068[.000027] THK PALLADIUM NICKEL, PER TE
 CONNECTIVITY'S DISCRETION. IN CONTACT
 AREA WITH BRIGHT TIN-LEAD FOR 641228-2
 THRU 2-641228-4, MATTE WHISKER MITIGATED
 TIN FOR 3-641228-2 THRU 5-641228-4
 OVER NICKEL UNDERPLATE.

2 CONTACTS ACCEPT 20 AWG WIRE WITH 2.41[.095] MAX
 INSULATION DIAMETER.

3 CONTACTS MUST ACCEPT 1.14±0.03 [.045±.001] SQUARE
 POST AND REMAIN LOCKED IN POSITION.

4 IDENTIFICATION NUMBER FOR LAST CIRCUIT MAY
 NOT APPEAR ON ALL ASSEMBLIES.

5 DIMENSIONS IN BRACKETS ARE IN INCHES.

6 HOUSING FEATURES ARE: FEED-THRU WITH LOCKING
 RAMP.

7 OBSOLETE PARTS: OBSOLETE CIS STREAMLINING PER D.RENAUD/D.SINISI

| DIM A | NO OF CIRCUITS | PART NO |
|---------------|----------------|-----------------------|
| 95.10 [3.744] | 24 | 5-641228-4 |
| 91.14 [3.588] | 23 | 5-641228-3 |
| 87.17 [3.432] | 22 | 5-641228-2 |
| 83.21 [3.276] | 21 | 5-641228-1 |
| 79.25 [3.120] | 20 | 5-641228-0 |
| 75.29 [2.964] | 19 | 4-641228-9 |
| 71.32 [2.808] | 18 | 4-641228-8 |
| 67.36 [2.652] | 17 | 4-641228-7 |
| 63.40 [2.496] | 16 | 4-641228-6 |
| 59.44 [2.340] | 15 | 4-641228-5 |
| 55.47 [2.184] | 14 | 4-641228-4 |
| 51.51 [2.028] | 13 | 4-641228-3 |
| 47.55 [1.872] | 12 | 4-641228-2 |
| 43.59 [1.716] | 11 | 4-641228-1 |
| 39.62 [1.560] | 10 | 4-641228-0 |
| 35.66 [1.404] | 9 | 3-641228-9 |
| 31.70 [1.248] | 8 | 3-641228-8 |
| 27.74 [1.092] | 7 | 3-641228-7 |
| 23.77 [.936] | 6 | 3-641228-6 |
| 19.81 [.780] | 5 | 3-641228-5 |
| 15.85 [.624] | 4 | 3-641228-4 |
| 11.89 [.468] | 3 | 3-641228-3 |
| 7.92 [.312] | 2 | 3-641228-2 |
| 95.10 [3.744] | 24 | 2-641228-4 |
| 91.14 [3.588] | 23 | 2-641228-3 |
| 87.17 [3.432] | 22 | 2-641228-2 |
| 83.21 [3.276] | 21 | 2-641228-1 |
| 79.25 [3.120] | 20 | 2-641228-0 |
| 75.29 [2.964] | 19 | 1-641228-9 |
| 71.32 [2.808] | 18 | 1-641228-8 |
| 67.36 [2.652] | 17 | 1-641228-7 |
| 63.40 [2.496] | 16 | 1-641228-6 |
| 59.44 [2.340] | 15 | 1-641228-5 |
| 55.47 [2.184] | 14 | 1-641228-4 |
| 51.51 [2.028] | 13 | 1-641228-3 |
| 47.55 [1.872] | 12 | 1-641228-2 |
| 43.59 [1.716] | 11 | 1-641228-1 |
| 39.62 [1.560] | 10 | 1-641228-0 |
| 35.66 [1.404] | 9 | 641228-9 |
| 31.70 [1.248] | 8 | 641228-8 |
| 27.74 [1.092] | 7 | 641228-7 |
| 23.77 [.936] | 6 | 641228-6 |
| 19.81 [.780] | 5 | 641228-5 |
| 15.85 [.624] | 4 | 641228-4 |
| 11.89 [.468] | 3 | 641228-3 |
| 7.92 [.312] | 2 | 641228-2 |

7 SUPERCEDED

OBSOLETE

7 SUPERCEDED

THIS DRAWING IS A CONTROLLED DOCUMENT.

| | | | |
|----------------------------|---|-------------------------------|---|
| DIMENSIONS: mm [INCHES] | TOLERANCES UNLESS OTHERWISE SPECIFIED: | DWN B. LEWIS 12 MAR 96 | TE Connectivity |
| | | CHK R. SWING 12 MAR 96 | |
| | | APVD D. CLARK 12 MAR 96 | MTA-156 CONNECTOR ASSEMBLY, 20 AWG, STANDARD |
| | | PRODUCT SPEC 108-1051 | |
| | | APPLICATION SPEC 114-1020 | SIZE A2 |
| MATERIAL 1 | FINISH 1 | WEIGHT - | CAGE CODE 00779 |
| CUSTOMER DRAWING | | DRAWING NO 641228 | RESTRICTED TO - |
| | | SCALE 4:1 | SHEET 1 OF 1 |
| | | REV N2 | |