

PART NUMBER	REV	FIRST USED		
1855118-1	D	CLS	LEADMAKER & BENCH MODEL G 1-5/8" STROKE	AIR FEED
1855118-2	D	K-TERM	BENCH MODEL K 1-1/8" STROKE	AIR FEED
1855118-3	D	KOMAX	KOMAX 1-5/8" STROKE	AIR FEED

TERMINAL NAME: .187 ULTRA-POD FASTON RECEPTACLE

TE	TERMINAL PN	REF SETTING	AMP TERMINAL	AMP CRIMP SPECS	
520973		A5	.060±.002 [1.52±0.05mm]	16 AWG	
520982		B9	.053±.002 [1.35±0.05mm]	18 AWG	
521086		C6	.049±.002 [1.24±0.05mm]	20 AWG	
521149					
521225					
521284					
521369					
521838					
521830					
		CRIMP	SIZE	TYPE	RANGE
		WIRE	.090 [2.28mm]	F	20-16
		INSUL	.140 [3.56mm]	F	∅.090-.130
WIRE STRIP LENGTH	TERM APPL SPEC	FEED	APPL INSTRUCTION	SET UP GAGE	LAYOUT
.156-.172	114-2124	.770	AI 408-8095 & 8098	-	-

* WARNING: ON INSTALLATION, SET WIRE DISC TO LARGEST WIRE SIZE SETTING. USE OF SETTINGS BELOW MIN REQUIRED CRIMP HEIGHT SETTING WILL CAUSE DAMAGE TO CRIMP TOOLING.

- 1 RECOMMENDED SPARE PARTS.
 - 2 ITEM NOT SHOWN. (SEE A.I.SHEET 8095)
 - 3 CUTTING TOLERANCE ±.25
4. SPRING LOADED TONKER (P/N 354853-1) MUST BE USED WHEN RUNNING THE APPLICATOR ON A LEADMAKER.


QTY	REQD	PER	ASSY	PART NO	DESCRIPTION	ITEM NO
2	2	2	-	21021-3	NUT, FLEXLOK 8-32	135
1	1	1	-	1-21018-6	NUT, HEX 5/16-24	134
1	1	1	-	21024-8	WASHER, LOCK	133
2	2	2	-	21024-5	WASHER, LOCK	132
4	4	4	-	1-21899-3	WASHER	131
1	1	1	-	21009-7	SCR, SOC SET 1/4-20 X .62	130
1	1	1	-	21009-2	SCR, SOC SET 1/4-20 X .25	129
2	2	2	-	1-23030-1	SCR, SOC HD LOK 8-32 X.62	128
2	2	2	-	22733-3	SCR, BHC, LOC 6-32 X .25	127
4	4	4	-	23030-2	SCR, SOC HD LOK 6-32 X .38	126
1	1	1	-	3-21001-4	SCR, SOC HD 3/8-16 X .88	125
2	2	2	-	4-21000-3	SCR, SOC HD 10-32 X 2.00	124
						123
2	2	2	-	3-21000-7	SCR, SOC HD 10-32 X .75	122
-	1	1	-	1-21000-9	SCR, SOC HD 6-32 X .38	121
-	1	1	-	2-21000-8	SCR, SOC HD 8-32 X .62	120
						119
4	2	2	-	2-21002-9	SCR, BUT HD 10-32 X .75	118
1	1	1	-	7-21002-9	SCR, BUT HD 5/16-24 X .75	117
2	2	2	-	2-21002-2	SCR, BUT HD 8-32 X .50	116
2	2	2	-	6-21002-1	SCR, BUT HD 10-24 X .25	115
12	12	12	-	2-21002-1	SCR, BUT HD 8-32 X .38	114
3	3	3	-	2-22733-8	SCR, BUT HD 1/4-20 X .63	113
-	2	2	-	1-21003-3	SCR, FLT HD 4-40 X .25	112
2	2	2	-	852521-1	PIN, MODIFIED DOWEL ∅.094 X .49	111
1	1	1	-	1-21030-7	PIN, DOWEL ∅.188 X 1.50	110
1	1	1	-	1-21919-1	PIN, DOWEL ∅.094 X .38	109
1	1	1	-	1-22183-7	PIN, GROOVE TYPE 67 ∅.125 X .63	108
						107
1	1	1	-	2-22286-2	SPRING, EXTENSION LE-031B-2	106
						105
-	4	4	-	7-22280-3	SPRING, COMPRESSION LC-042C-17	104
						103
2	2	2	-	2-22280-9	SPRING, COMPRESSION LC-032C-6	102
1	1	1	-	1-23470-7	SPRING, COMPRESSION LC-035C-19	101
2	2	2	-	22354-7	STUD, 8-32	100
-	2	2	-	2-21002-8	SCR,BHC,(10-32x.62)RAM CAP	99
-	2	2	-	2-21002-6	SCR,BHC,(10-32x.38)	98
						97
1	1	1	-	461264-5	TAG, IDENTIFICATION	96
2	2	2	-	21017-2	SCREW DRIVE 2 X .19	95
						94
-	-	REF	-	679532-1	GUARD, INSERT	93
-	1	-	-	455755-8	ASSEMBLY, GUARD	92
1	-	-	-	1633303-1	HOLDER, STABILIZER	91
1	-	-	-	3-238009-7	BLOCK, CRIMPER SPACER	90
1	-	-	-	1633289-3	STABILIZER	89
1	-	-	-	1-21002-3	SCR,BHC,(4-40x.25)	88
1	1	1	-	1424350-1	HOLDER, PIN, WIRED	87
3	3	3	-	2-23147-2	SPRING, DEPRESSOR	86
1	1	1	-	1490524-1	SPACER, DEPRESSOR	85
1	1	1	-	1490525-3	DEPRESSOR, WIRE	84
1	1	1	-	852287-1	PLATE, RETAINER	83
1	1	1	-	852286-1	LATCH, INSERT	82
1	1	1	-	852284-1	ARM, LATCH	81
1	1	1	-	852281-2	ROLLER	80
1	1	1	-	852245-2	CAM, INSERT	79
1	1	1	-	852246-1	CAM, VALVE	78
						77
1	1	1	-	354993-1	AIR CYLINDER 1-1/8 X .625	76
-	1	-	-	26108-1	BODY, QUICK CONNECT	75
-	1	-	-	23791-2	TEE, FEMALE BRANCH	74
-	2	-	-	22311-2	NIPPLE	73
-	1	-	-	28580-1	FILTER, MINIATURE	72
-	1	-	-	28582-1	LUBRICATOR	71
QTY	REQD	PER	ASSY	PART NO	DESCRIPTION	ITEM NO

QTY	REQD	PER	ASSY	PART NO	DESCRIPTION	ITEM NO	
3	80	68	68	IN	27319-4	TUBING, NYLON ∅.250	70
3	2	2	-		980282-3	CONNECTOR, MALE 1/8NPT X .25	69
-	1	-	-		22307-1	BUSHING, PIPE FITTING	68
2	1	2	-		23238-1	INSERT, COUPLING	67
-	-	1	-		980285-2	ELBOW, MALE SWIVEL 1/8NPT X .25	66
1	1	1	-		354385-4	ASSEMBLY, PNEUMATIC	65
-	1	-	-		692655-5	ASSEMBLY, VALVE	64
1	1	1	-		852289-1	ASSEMBLY, AIR FEED	63
1	1	1	-		461690-1	SPACER	62
1	1	1	-		459610-3	MOUNT, FEED BRACKET	61
1	1	1	-		19832-1	TIE, WIRE	60
2	-	1	-		22304-1	NIPPLE,HEX,PIPEFITTING	59
1	-	1	-		22374-7	VALVE,QUICK EXHAUST	58
							57
-	1	-	-		1338042-5	WIRE DEPRESSOR	56
-	-	1	-		1338042-4	WIRE DEPRESSOR	55
-	1	1	-		1338045-1	PLATE, DEPRESSOR	54
-	1	1	-		1338043-1	CAP, DEPRESSOR	53
-	1	1	-		1338044-1	WIRE DEPRESSOR, HOLDER	52
							51
1	1	1	-		690191-1	PLUG, NYLON	50
							49
1	1	1	-		469367-2	SPACER, FINE ADJUST	48
1	1	1	-		879103-2	FINE ADJUST HEAD SUBASSY	47
1	-	-	-		22306-1	ELBOW, MALE 1/8 NPT	46
1	-	-	-		23054-1	VALVE, FLOW CONTROL	45
18	-	-	IN		27319-8	TUBING, POLY FLOW.,156	44
1	-	-	-		1424324-1	AIR LINE KIT, .250 TO 4mm	43
							42
							41
							40
1	1	1	-		852251-2	DRAG	39
							38
1	1	1	-		853521-1	PAWL, FEED	37
1	1	1	-		461062-6	ASSEMBLY, FEED FINGER	36
							35
1	1	1	-		679158-1	GUIDE, REAR STRIP	34
1	1	1	-		679157-1	GUIDE, FRONT STRIP	33
1	1	1	-		1338060-1	PLATE, STRIP GUIDE	32
							31
1	1	1	-		1338955-1	HOLDDOWN, FIXED	30
1	1	1	-		90777-1	GIB, HOUSING	29
1	1	1	-		318197-1	INSERTER, POD	28
1	1	1	-		90775-1	HOUSING, INSERT SLIDE	27
							26
1	1	1	-		853515-1	SHEAR, RIGHT	25
1	1	1	-		314864-1	SHEAR, LEFT	24
							23
1	1	1	-		853516-1	BLADE, SLUG	22
1	1	1	-		22733-8	SCR.,BHC.,LOC.(8-32x.38)	21
1	1	-	-		354403-1	ANVIL	20
-	1	1	-		1338056-7	ANVIL	19
-	1	1	-		1338041-3	SUPPORT, LOWER WIRE	18
							17
							16
							15
							14
1	1	1	-		1-238011-0	BLOCK, CRIMPER SPACER	13
1	1	1	-		455888-3	SPACER, CRIMPER	12
1	1	1	-		455888-4	SPACER, CRIMPER	11
1	1	1	-		1-455888-6	SPACER, CRIMPER	10
1	-	-	-		454220-1	CAP, RAM	9
1	1	1	-		4-683453-5	CRIMPER, INSULATION "F"	8
1	-	-	-		852221-2	HOUSING, APPLICATOR	7
1	1	1	-		4-456406-7	CRIMPER, WIRE	6
-	1	1	-		1673936-2	RAM CAP PLATE	5
1	1	1	-		856287-3	RAM	4
-	1	1	-		1424388-2	CAP, RAM	3
-	1	1	-		1424387-1	HOUSING, APPLICATOR	2
1	1	1	-		1424368-1	PLATE, BASE	1
QTY	REQD	PER	ASSY	PART NO	DESCRIPTION	ITEM NO	

LOC A
DIST 66

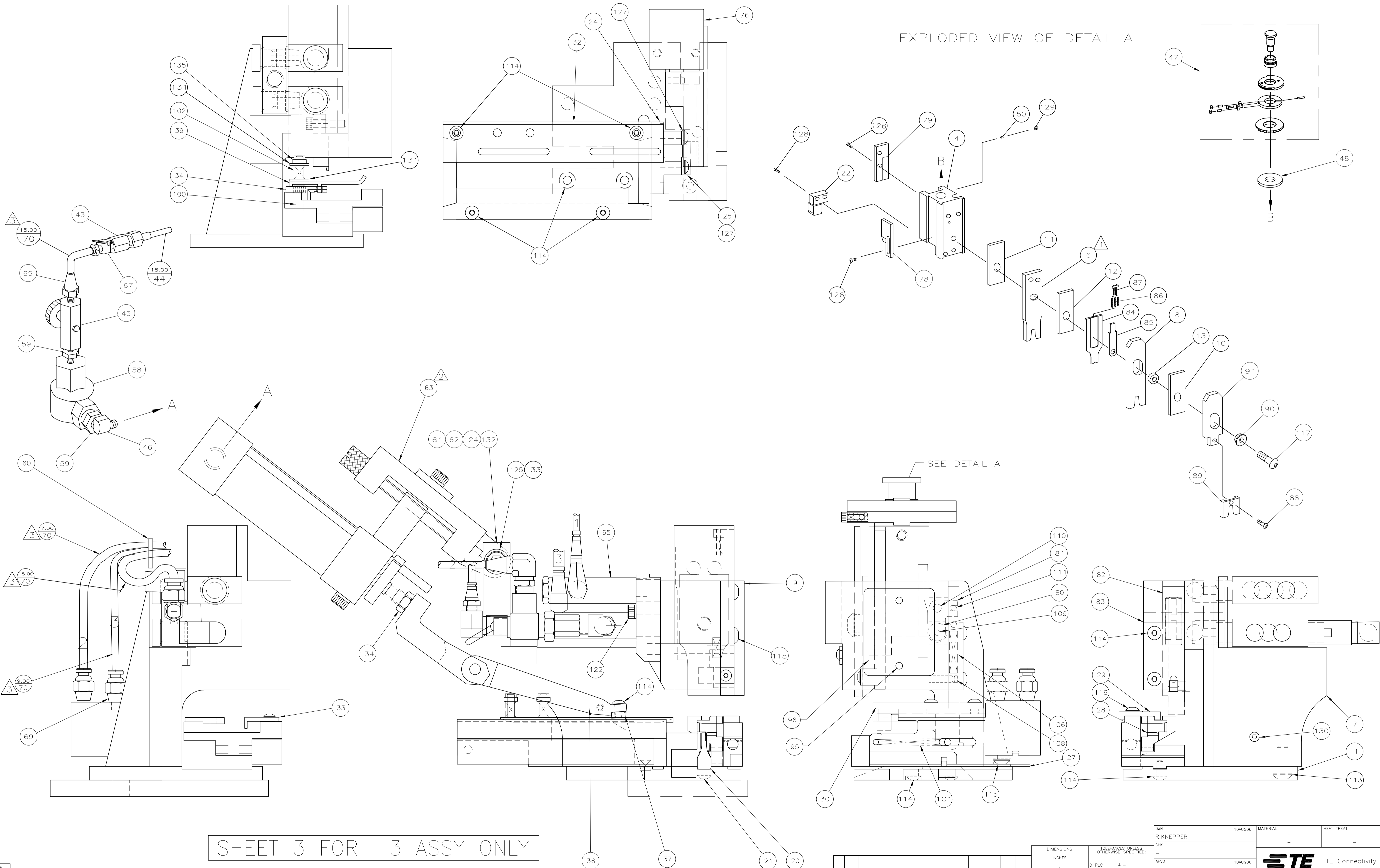
D	ECR-12-015200	8-2012	MY	GB
P	LTR	REVISION RECORD	DATE	DWN

DIMENSIONS: INCHES		TOLERANCES UNLESS OTHERWISE SPECIFIED:	
0 PLC	±	1 PLC	±
1 PLC	±	2 PLC	±
2 PLC	±	3 PLC	±
3 PLC	±	4 PLC	±
ANGLES: -		SURFACE TEXTURE: ✓	

DWN	10AUG06	MATERIAL	-	HEAT TREAT	-
CHK	-				
APVD	10AUG06	 TE Connectivity			
NAME	ULTRA-POD APPLICATOR, .187 STRAIGHT				
SCALE	1:1	SIZE	A1	DRAWING NO	1855118
SHEET	1	OF	3	REV	D

CUSTOMER ACCESSIBLE PRODUCTION DRAWING

DIMENSIONING AND TOLERANCING PER ASME Y14.5M (USD STANDARDS)
THIS DRAWING IS A CONTROLLED DOCUMENT. 1855118



SHEET 3 FOR -3 ASSY ONLY

LOC
A
DIST
66

P	LTR	REVISION RECORD	DATE	OWN	APVD
-	-	SEE SHEET 1	-	-	-

DIMENSIONS:		TOLERANCES UNLESS OTHERWISE SPECIFIED:	
INCHES	PLC	±	±
⊕	1 PLC	±	±
∠	2 PLC	±	±
∠	3 PLC	±	±
∠	4 PLC	±	±
ANGLES:		SURFACE TEXTURE: ✓	

DWN	10AUG06	MATERIAL	HEAT TREAT
R.KNEPPER	-	-	-
CHK	-	-	-
APVD	10AUG06	TE Connectivity	
T.ELBIN	NAME		
ULTRA-POD APPLICATOR .187 STRAIGHT			
SCALE	SIZE	DRAWING NO	SHEET
1:1	A1	1855118	3 of 3
REV			D

CUSTOMER ACCESSIBLE PRODUCTION DRAWING

Mouser Electronics

Authorized Distributor

Click to View Pricing, Inventory, Delivery & Lifecycle Information:

[TE Connectivity:](#)

[1855118-1](#)