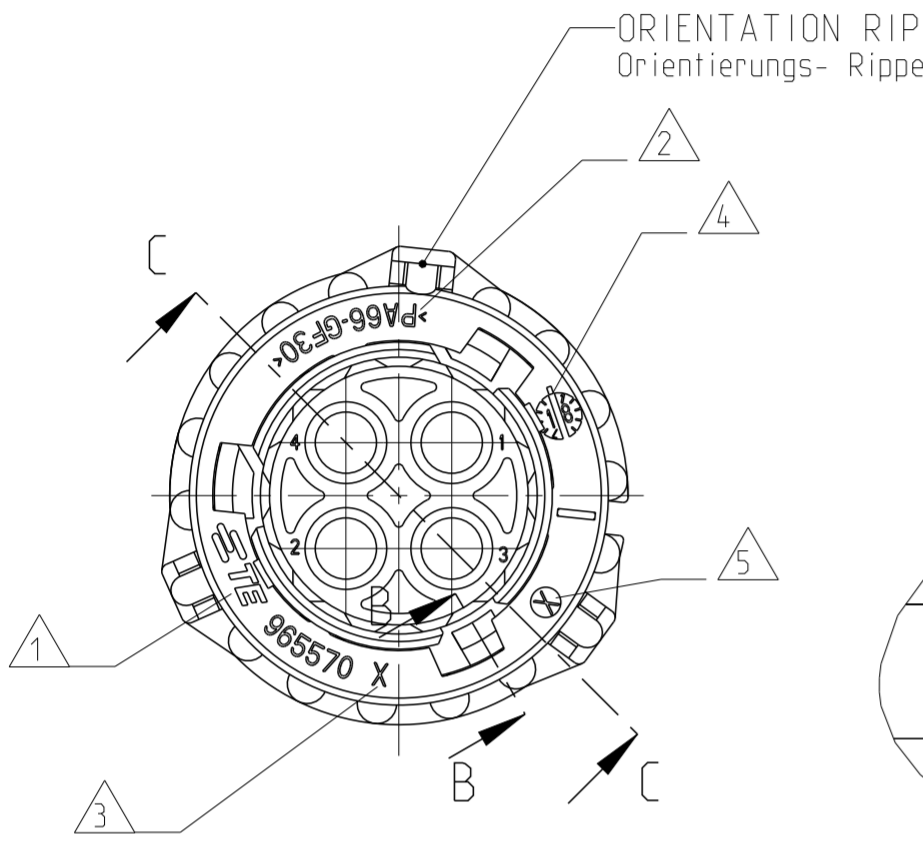
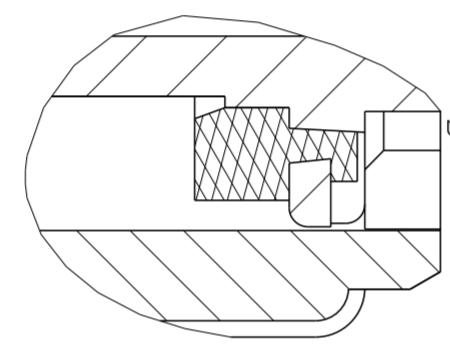


LOC	DIST	REVISIONS AENDERUNGEN			
P	LTR	DESCRIPTION BESCHREIBUNG	DATE	DWN	APVD
A1	-	REVISED PER ECO-11-005150	21MAR11	RK	HMR
		REVISED PER PCN E-13-005564	18APR2013	RD	JG
		REVISED PER PCN :E-18-009409	18JUNE2018	SH	FE
		REVISED PER PCN :E-19-003099	26FEB2019	PP	JG

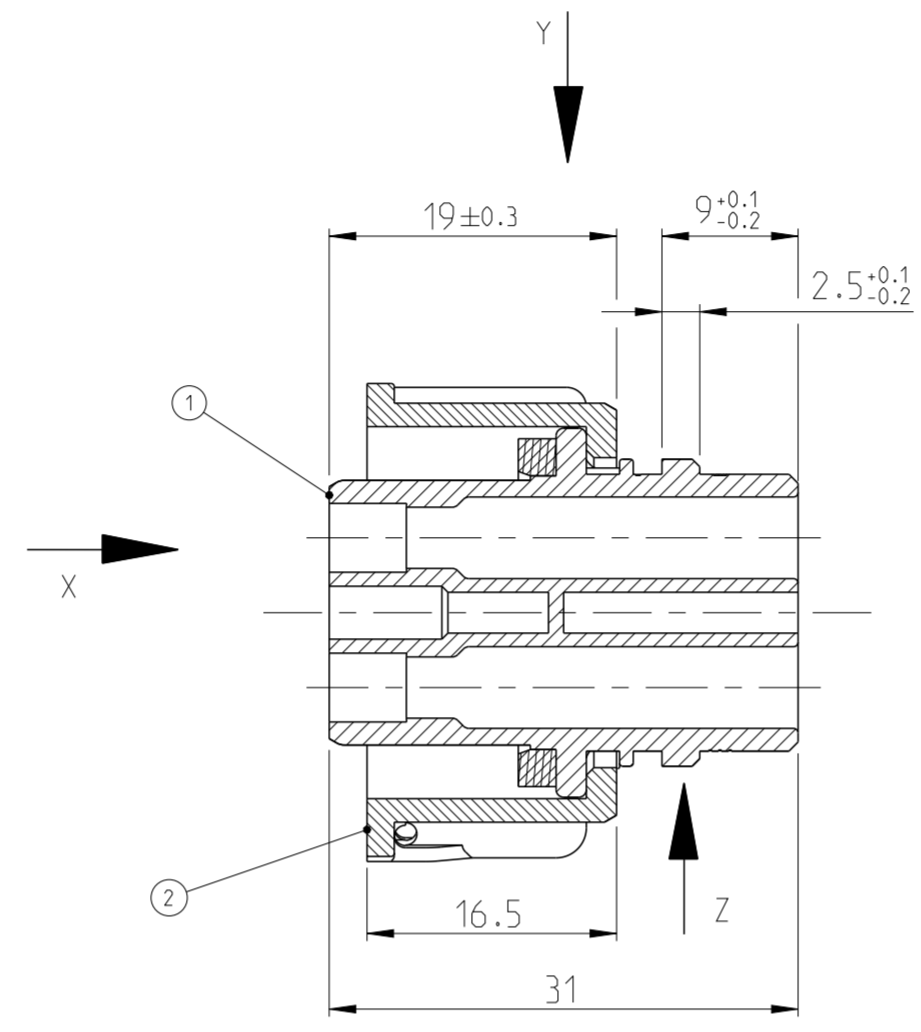
-COUPLING-RING IN PRE-LOCKED POSITION (FITTING POSITION WITH PIN HOUSING)  
 -Kupplungsring in Vorraststellung (Fuegeposition mit Stiftgehaeuse)



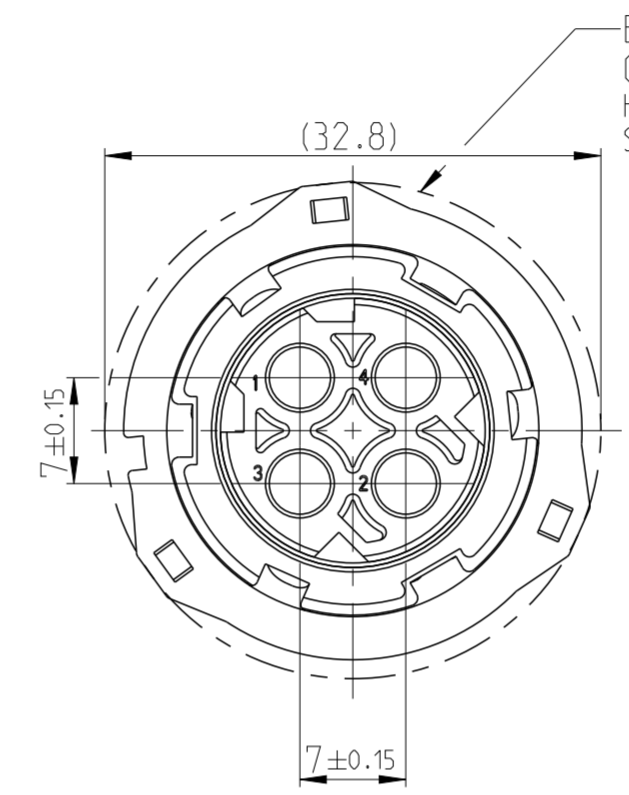
SECTION B-B  
 SCALE 5:1  
 Schnitt B-B  
 M 5:1



SECTION C-C  
 Schnitt C-C

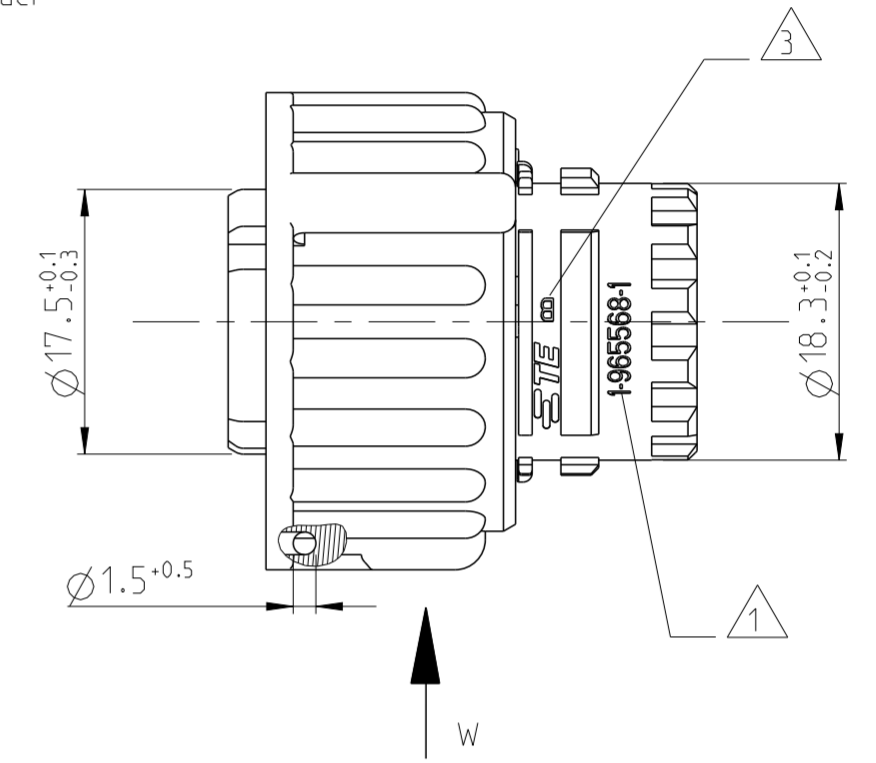


VIEW X  
 45° ROTATED (CLOCKWISE)  
 Ansicht X  
 45° gedreht (im Uhrzeigersinn)



ENVELOPE SURFACE FOR CONNECTOR MOUNTING  
 Huellflaeche fuer Steckereinbau

VIEW Y  
 Ansicht Y

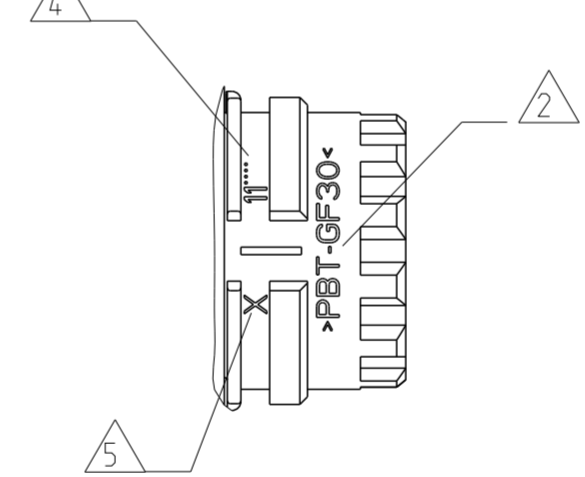


NOTES  
 Bemerkungen

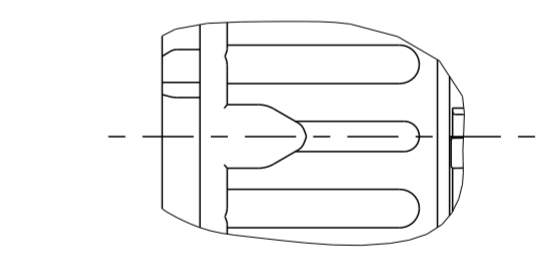
- 1 AMP-LOGO OR TE-LOGO, ORDERNUMBER  
AMP-Logo oder TE-Logo und Bestellnummer
- 2 MATERIAL MARKING  
Werkstoffkennzeichnung
- 3 REVISION OF THE MOULD.  
Werkzeugaenderungsindex

- 4 PRODUCTION DATE  
Produktionsdatum
- 5 CAVITY MARKING  
Nestmarkierung
- 6 FITS TO CONNECTORS ACC. TO DIN 72585/ISO 15170 FORM A AND B AND PIN-HOUSING 2-4POS. TE-PN 967402  
Passend zu Steckverbindern nach DIN 72585/ISO 15170 Form A und B und Stiftgehaeuse 2-4pol. TE-PN 967402
- 7 FOR SUITABLE CONTACTS AND SEALS SEE DRAWING.  
Zu verwendende Kontakte und Einzeldichtungen siehe Tabellenzzeichnung.  
TE 1355065  
MAX. WIRE THICKNESS: 2.5mm<sup>2</sup> FLR  
max. Drahtgroesse

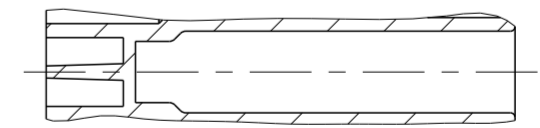
VIEW Z  
 Ansicht Z



VIEW W (2x)  
 Ansicht W



CLOSED CAVITY IN THE 2POS. AND 3POS. CONNECTOR  
 Verschlossene Kammer in der 2pol. und 3pol. Variante



REV.	ORDER NR. Bestell.-NR.	USED CONTACT CAVITIES Kontaktbestueckung
D	4-967325-3	1, 2
D	4-967325-2	1, 2, 3
D	4-967325-1	1, 2, 3, 4
D	3-967325-3	1, 2
D	3-967325-2	1, 2, 3
D	3-967325-1	1, 2, 3, 4
D	2-967325-3	1, 2
D	2-967325-2	1, 2, 3
D	2-967325-1	1, 2, 3, 4
E	1-967325-3	1, 2
E	1-967325-2	1, 2, 3
E	1-967325-1	1, 2, 3, 4

POS.	QTY. Stueck	DESCRIPTION SINGLE PART Beschreibung Einzelteil	MATERIAL WERKSTOFF	SURFACE/Oberflaeche COLOUR/Farbe
1	1	COUPLING RING Kupplungsring	PA66-GF30	BLACK schwarz
1	1	SOCKET HOUSING W. SEALING 2POS. Buchsengehaeuse m. Dichtung 2pol.	PBT-GF30/SILICONE	SEALING: ORANGE Dichtung: orange
1	1	SOCKET HOUSING W. SEALING 3POS. Buchsengehaeuse m. Dichtung 3pol.	PBT-GF30/SILICONE	SEALING: ORANGE Dichtung: orange
1	1	SOCKET HOUSING W. SEALING 4POS. Buchsengehaeuse m. Dichtung 4pol.	PBT-GF30/SILICONE	SEALING: ORANGE Dichtung: orange

THIS DRAWING IS A CONTROLLED DOCUMENT. DIESE ZEICHNUNG IST EIN KONTROLLIERTES DOKUMENT.

DIMENSIONS: MASSE/MAEßEN: (mm)	TOLERANCES UNLESS OTHERWISE SPECIFIED: ALLGEMEINTOLERANZEN ACC. TO ISO 8015
1 PLC ±	±0.2
2 PLC ±	±0.2
3 PLC ±	±0.2
4 PLC ±	±0.2
ANGLES/WINKEL FINISH/OBERFLAECHEN/FARBE	±0.2

TE Connectivity

2.5mm SOCKET CONNECTOR, 2-4POS. 2.5mm Buchsenstecker, 2-4pol.

APVD: J. GRANZOW 11NOV1994, J. HASS 15NOV1994, CH. EBERWEIN 15APR2013

PRODUCT SPEC: 108-18621, VERARBEITUNGSSPEZ: 114-18255

WEIGHT GEWICHT: 12.0g

CUSTOMER DRAWING /KUNDENZEICHNUNG

SCALE MASSSTAB: 2:1

SHEET BLATT 1 OF VON 2

REV E2

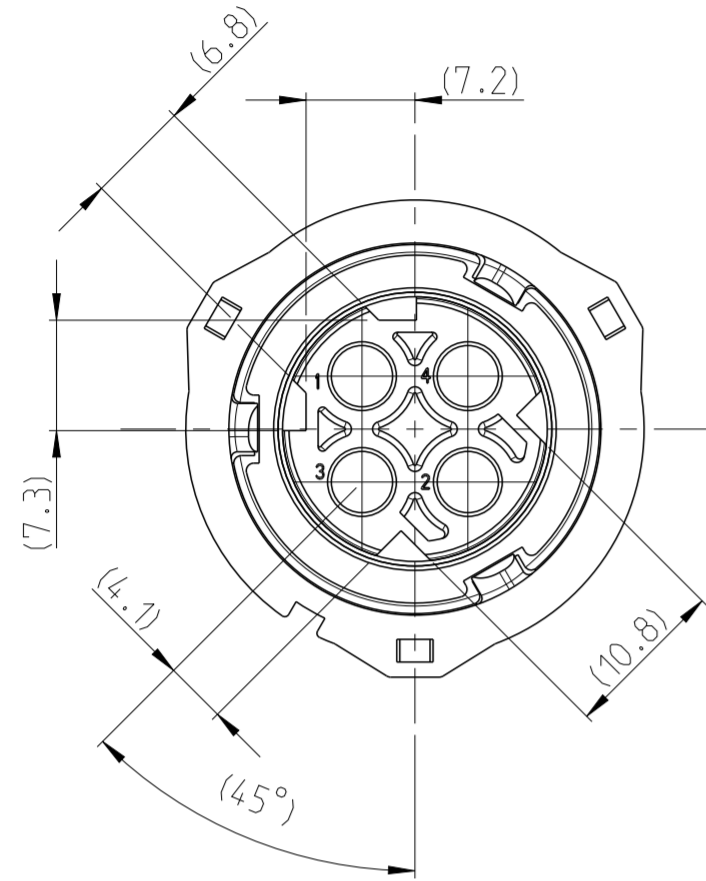
THIS DRAWING IS UNPUBLISHED.  
 VERTRAULICHE UNVERÖFFENTLICHTE ZEICHNUNG  
 © COPYRIGHT 2019 TE Connectivity. All Rights Reserved.

RELEASED FOR PUBLICATION  
 FREI FUER VERÖFFENTLICHUNG  
 2019  
 ALL RIGHTS RESERVED.  
 ALLE RECHTE VORBEHALTEN.

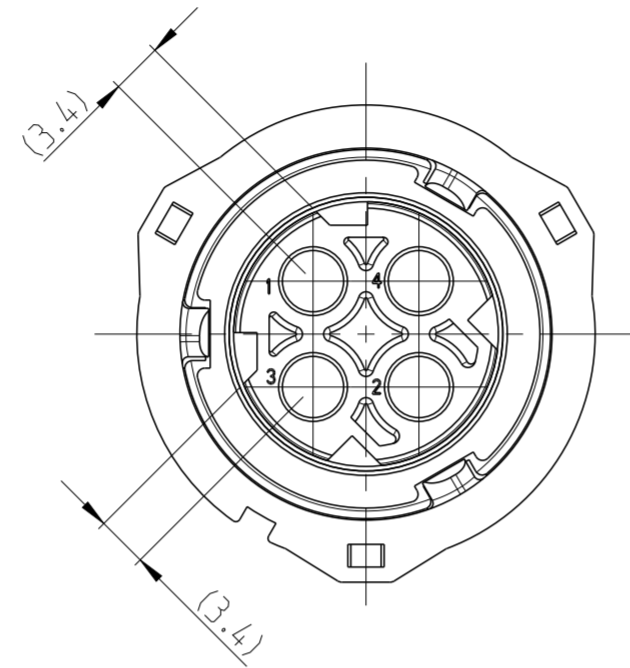
MATED WITH:  
 PASSEND ZU:  
 967402

LOC	DIST	REVISIONS ÄNDERUNGEN					
		P	LTR	DESCRIPTION BESCHREIBUNG	DATE	DWN	APVD
A1	-						
PROJEKT NR.: 92-52069		D1		REVISED PER ECO-11-005150	21MAR11	RK	HMR
		E		REVISED PER PCN E-13-005564	18APR2013	RD	JG
		E1		REVISED PER PCN :E-18-009409	18JUNE2018	SH	FE
		E2		REVISED PER PCN :E-19-003099	26FEB2019	PP	JG

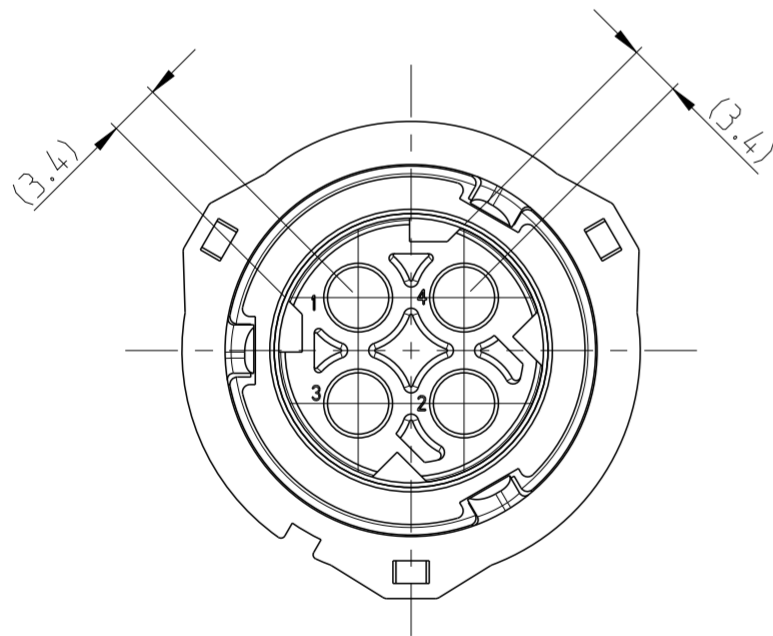
E2 CODING 1  
Kodierung



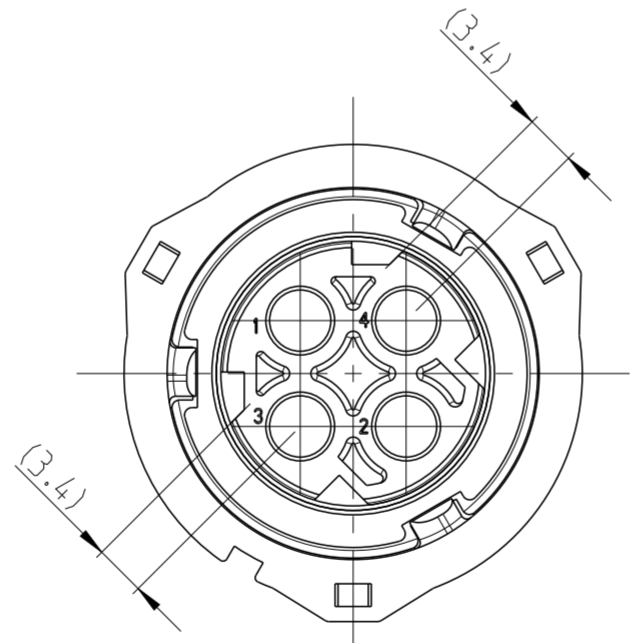
E2 CODING 2  
Kodierung




E2 CODING 3  
Kodierung



E2 CODING 4  
Kodierung



THIS DRAWING IS A CONTROLLED DOCUMENT. DIESE ZEICHNUNG IST EIN KONTROLLIERTES DOKUMENT		DWN J.GRANZOW 11NOV1994	 TE Connectivity																			
DIMENSIONS: MASSEINHEITEN: (MM)		CHK J.HASS 15NOV1994																				
TOLERANCES UNLESS OTHERWISE SPECIFIED: ALLGEMEINTOLERANZEN ACCT. TO ISO 8015		APVD CH. EBERWEIN 15APR2013	NAME 2.5mm SOCKET CONNECTOR, 2-4POS. 2.5mm Buchsenstecker, 2-4pol.																			
<table border="1"> <tr> <td>PLC</td> <td>±</td> <td>±0.2</td> </tr> <tr> <td>1 PLC</td> <td>±</td> <td></td> </tr> <tr> <td>2 PLC</td> <td>±</td> <td></td> </tr> <tr> <td>3 PLC</td> <td>±</td> <td></td> </tr> <tr> <td>4 PLC</td> <td>±</td> <td></td> </tr> <tr> <td>ANGLES/WINKEL</td> <td></td> <td>±2°</td> </tr> </table>		PLC	±	±0.2	1 PLC	±		2 PLC	±		3 PLC	±		4 PLC	±		ANGLES/WINKEL		±2°	PRODUCT SPEC 108-18621	SIZE A2	
PLC	±	±0.2																				
1 PLC	±																					
2 PLC	±																					
3 PLC	±																					
4 PLC	±																					
ANGLES/WINKEL		±2°																				
MATERIAL		APPLICATION SPEC 114-18255	CAGE CODE 00779	DRAWING NO. ZEICHNUNGS-NR. C-967325																		
WEIGHT GEWICHT 12.0g		SCALE MASSSTAB 2:1		RESTRICTED TO NUR FUER																		
CUSTOMER DRAWING		/KUNDENZEICHNUNG		SHEET BLATT 2 OF VON 2																		
				REV E2																		