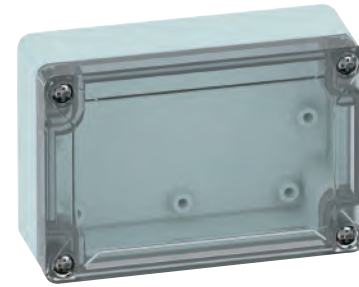


TG1208-6 – ABS and Polycarbonate – 122 x 82 x 55 mm (4.80 x 3.23 x 2.17 in.)

Standard Features

- **Protection Level:** IP67 (NEMA 4X)
- **Technical:**
 - Smooth Sidewalls
 - Gray or Transparent Cover
 - Standard or Quick Turn Screws
 - 98 x 58 x 0.4 mm Recess in Cover
 - Integrated Cover Retainer
- **UL Recognized Enclosure Materials:** ABS or Polycarbonate
- **Transparent Cover Material:** Polycarbonate
- **Gasket Material:** Polyurethane
- **Color:** Light Gray
- **Material Temperature Range:**
 - ABS: -40°C to 80°C (-40°F to 176°F)
 - Polycarbonate: -40°C to 120°C (-40°F to 248°F)
- **Accessories:** See section below



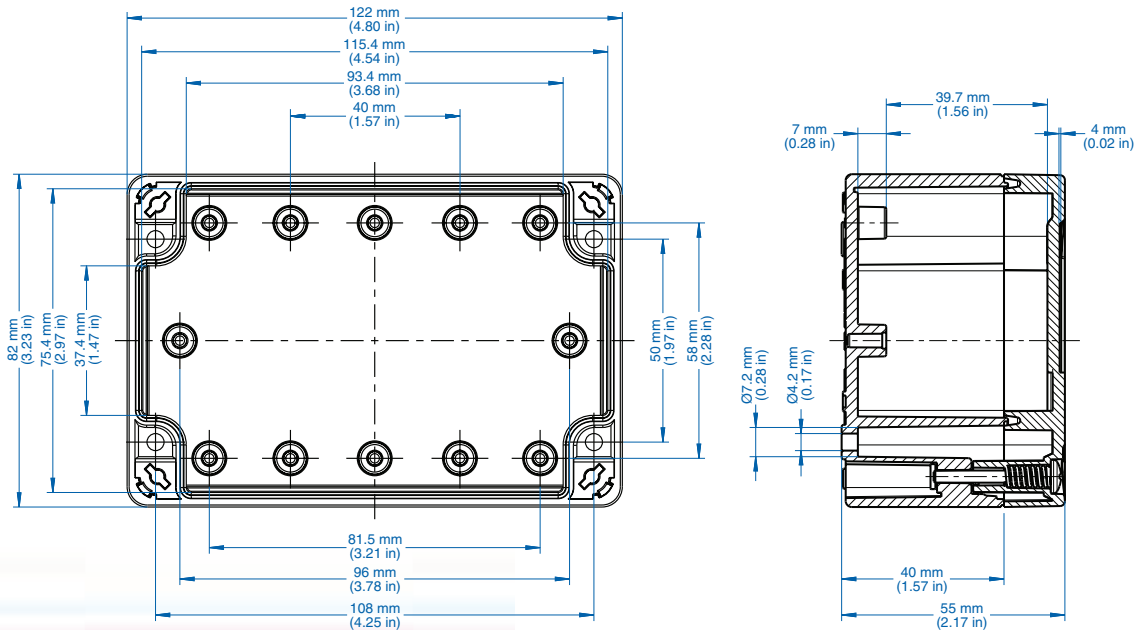
TG

| Ordering Information | Cat. No. w/ Standard Screws | Cat. No. w/ Quick Turn Screws | Type | Length | Dimensions mm (in) Width | Height | Std. Pk. |
|----------------------|-----------------------------|-------------------------------|----------------|-------------------|-----------------------------|------------------|----------|
| ABS | | | | | | | |
| Gray cover | 100-404-91 | 100-404-01 | TGABS1208-6-o | 122 mm (4.80 in.) | 82 mm (3.23 in.) | 55 mm (2.17 in.) | 1 |
| Transparent cover | 101-004-91 | 101-004-01 | TGABS1208-6-to | 122 mm (4.80 in.) | 82 mm (3.23 in.) | 55 mm (2.17 in.) | 1 |
| Polycarbonate | | | | | | | |
| Gray cover | 200-404-91 | 200-404-01 | TGPC1208-6-o | 122 mm (4.80 in.) | 82 mm (3.23 in.) | 55 mm (2.17 in.) | 1 |
| Transparent cover | 201-004-91 | 201-004-01 | TGPC1208-6-to | 122 mm (4.80 in.) | 82 mm (3.23 in.) | 55 mm (2.17 in.) | 1 |

Accessories

| Ordering Information | Cat. No. | Type | Std. Pk. |
|--------------------------|----------|------------|----------|
| Mounting Plate (plastic) | 186-004 | TGMPI-1208 | 1 |
| Mounting Plate (steel) | 187-004 | TGMPS-1208 | 1 |
| DIN Rail – TS35-106 | 198-107 | NS35-106/2 | 1 |
| DIN Rail - TS15-106 | 197-107 | TS15-106/2 | 1 |
| Mounting Tab Kit | 182-002 | TGABL | 1 |

Please refer to pages 149-152 additional accessories and detailed information



Mouser Electronics

Authorized Distributor

Click to View Pricing, Inventory, Delivery & Lifecycle Information:

[Altech:](#)

[200-404-01](#) [100-404-91](#) [200-404-91](#) [201-004-01](#) [101-004-01](#) [201-004-91](#) [101-004-91](#) [100-404-01](#)