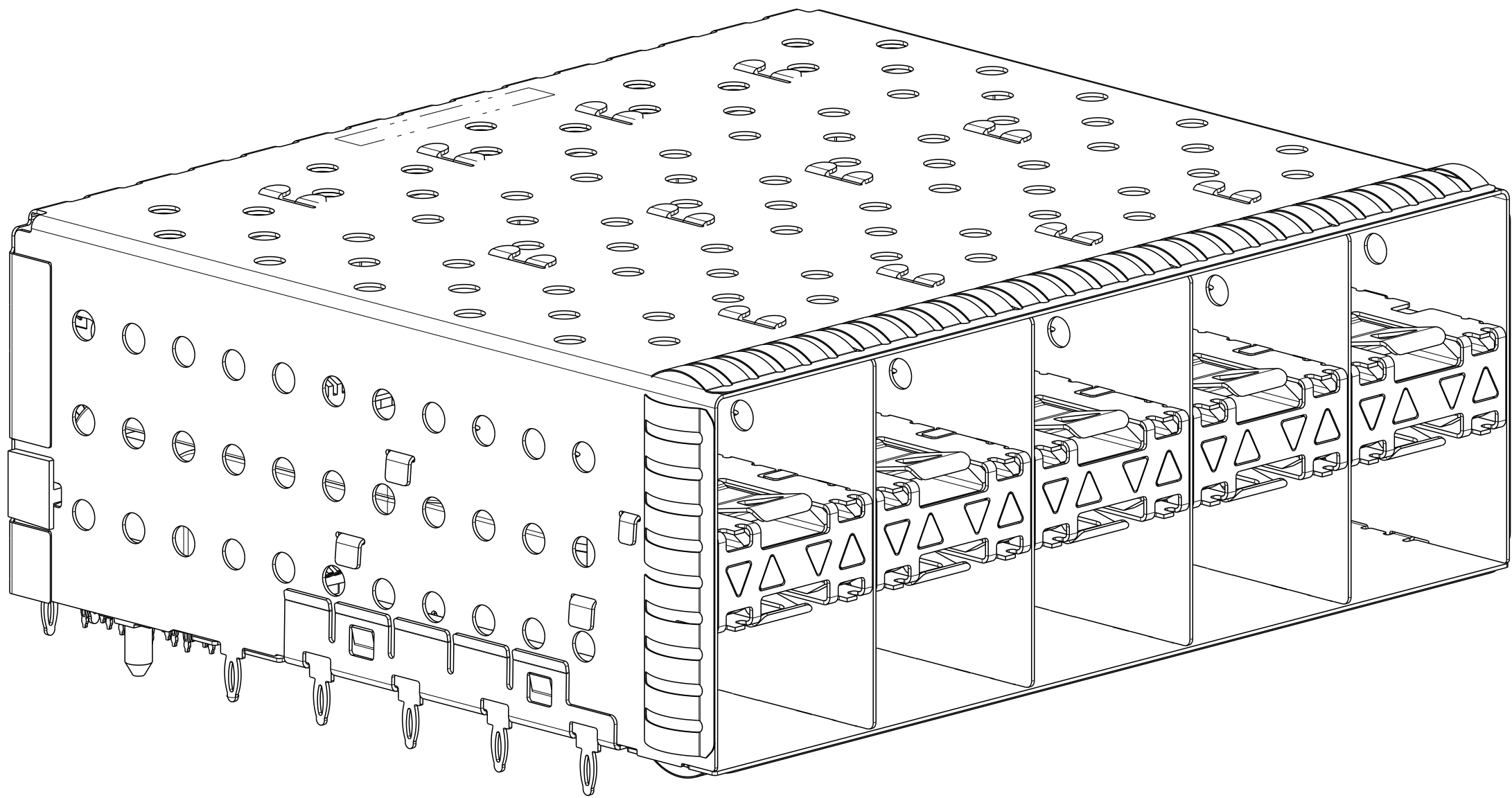
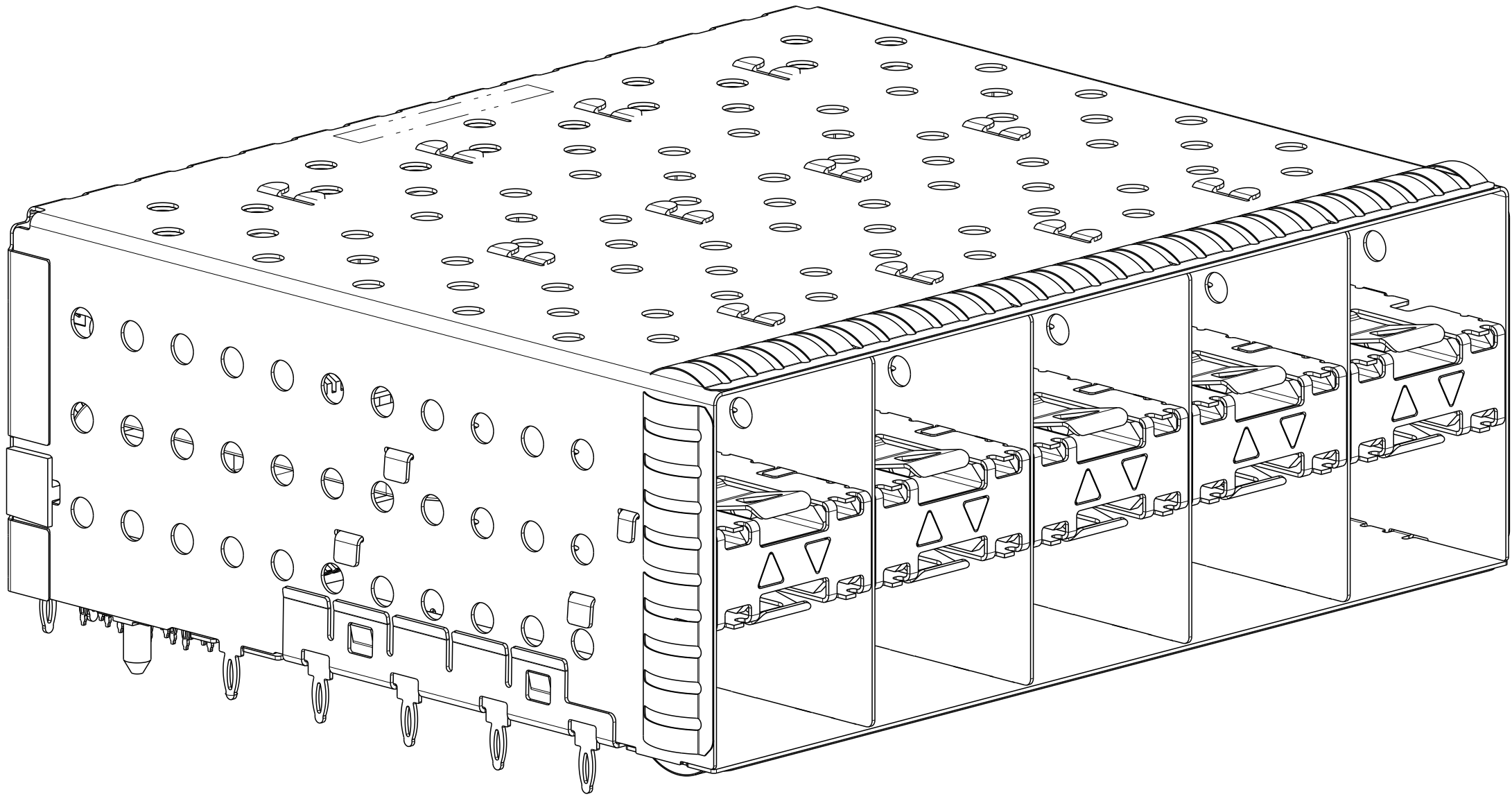


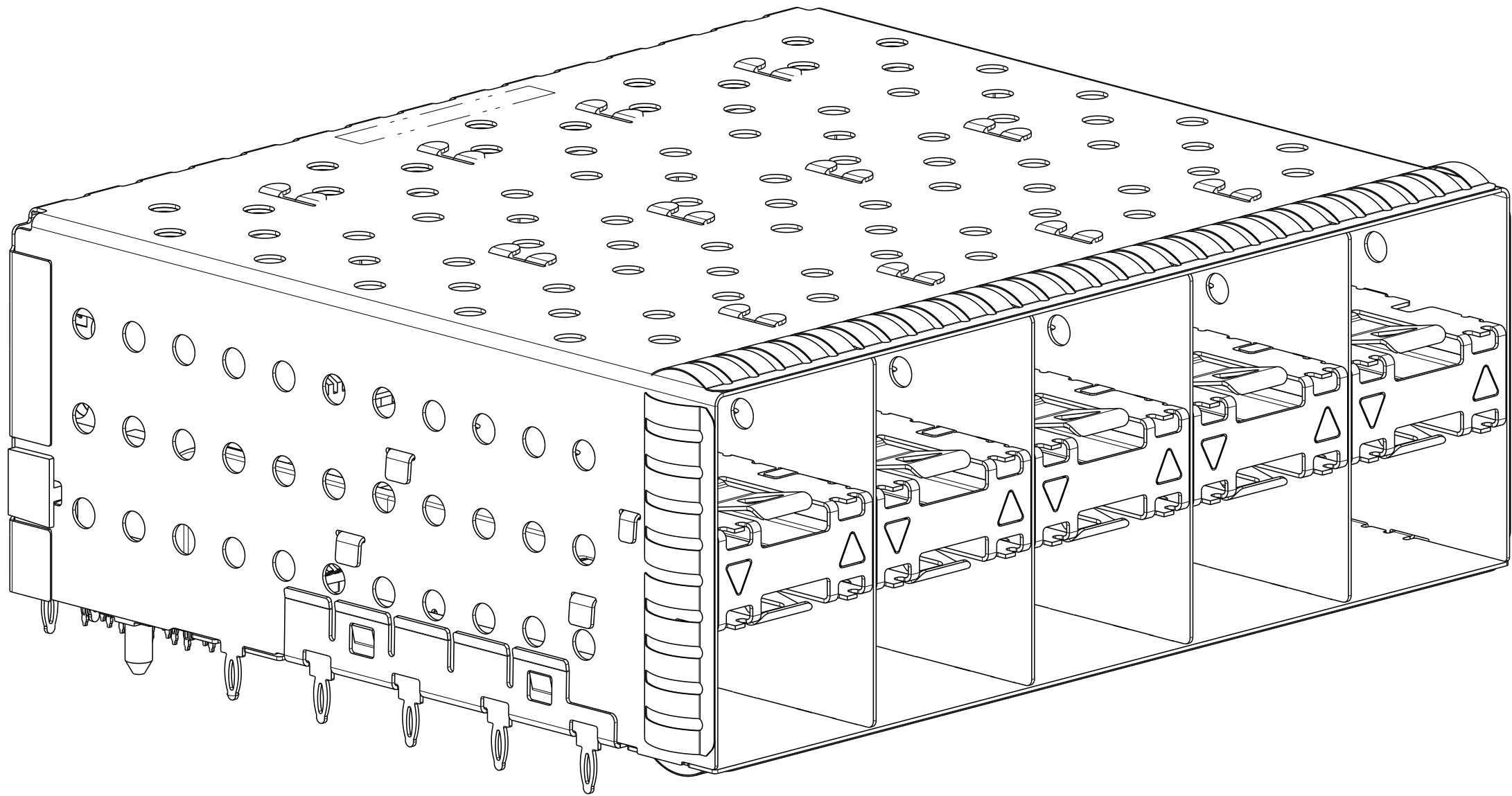
LOC		DIST		REVISIONS			
P	LTR	DESCRIPTION		DATE	DWN	APVD	
-	-	SEE SHEET 1		-	-	-	



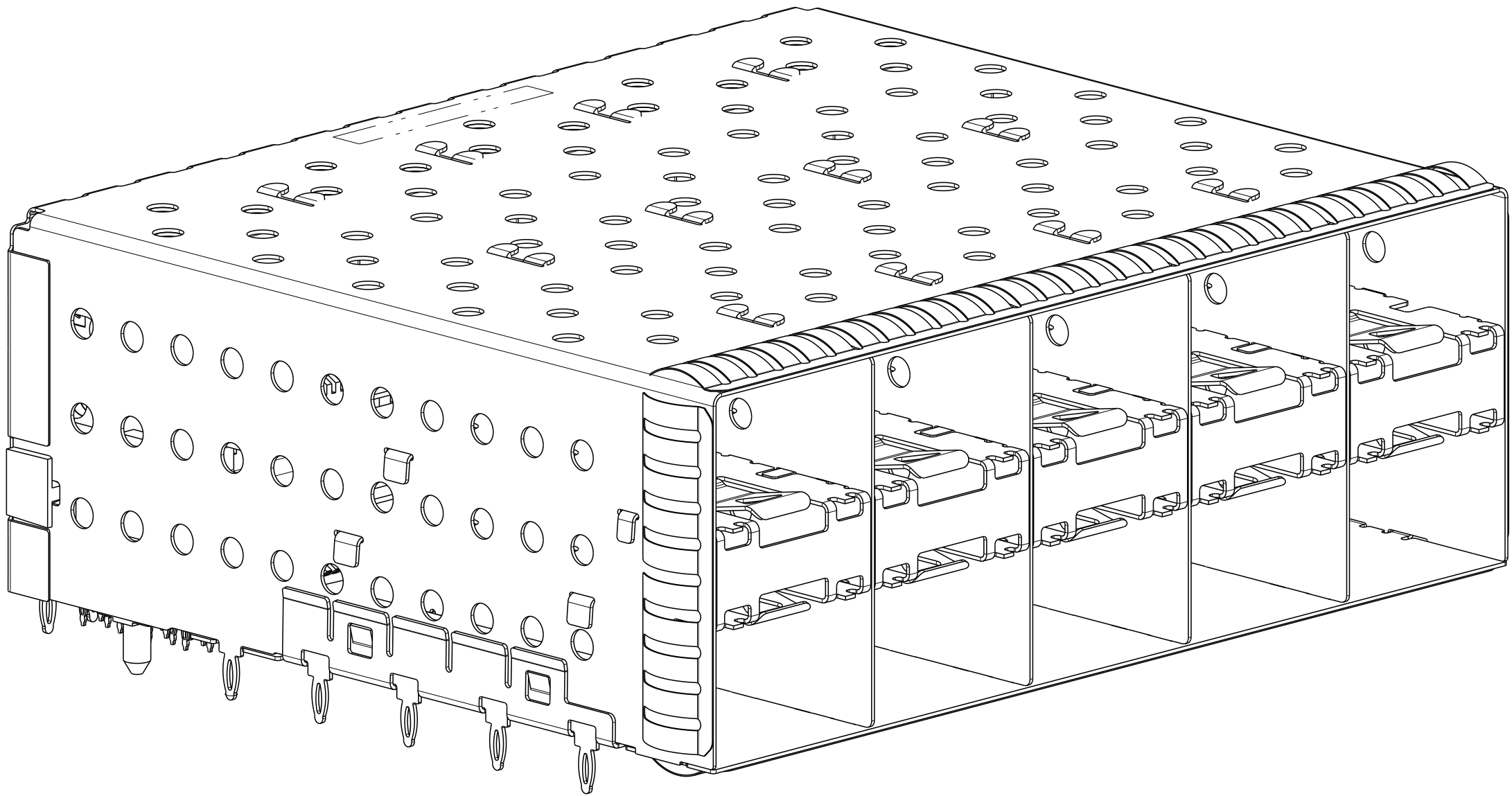
2132403-5 AND 1-2132403-5
SCALE 3:1




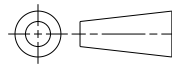
2132403-6 AND 1-2132403-6
SCALE 3:1

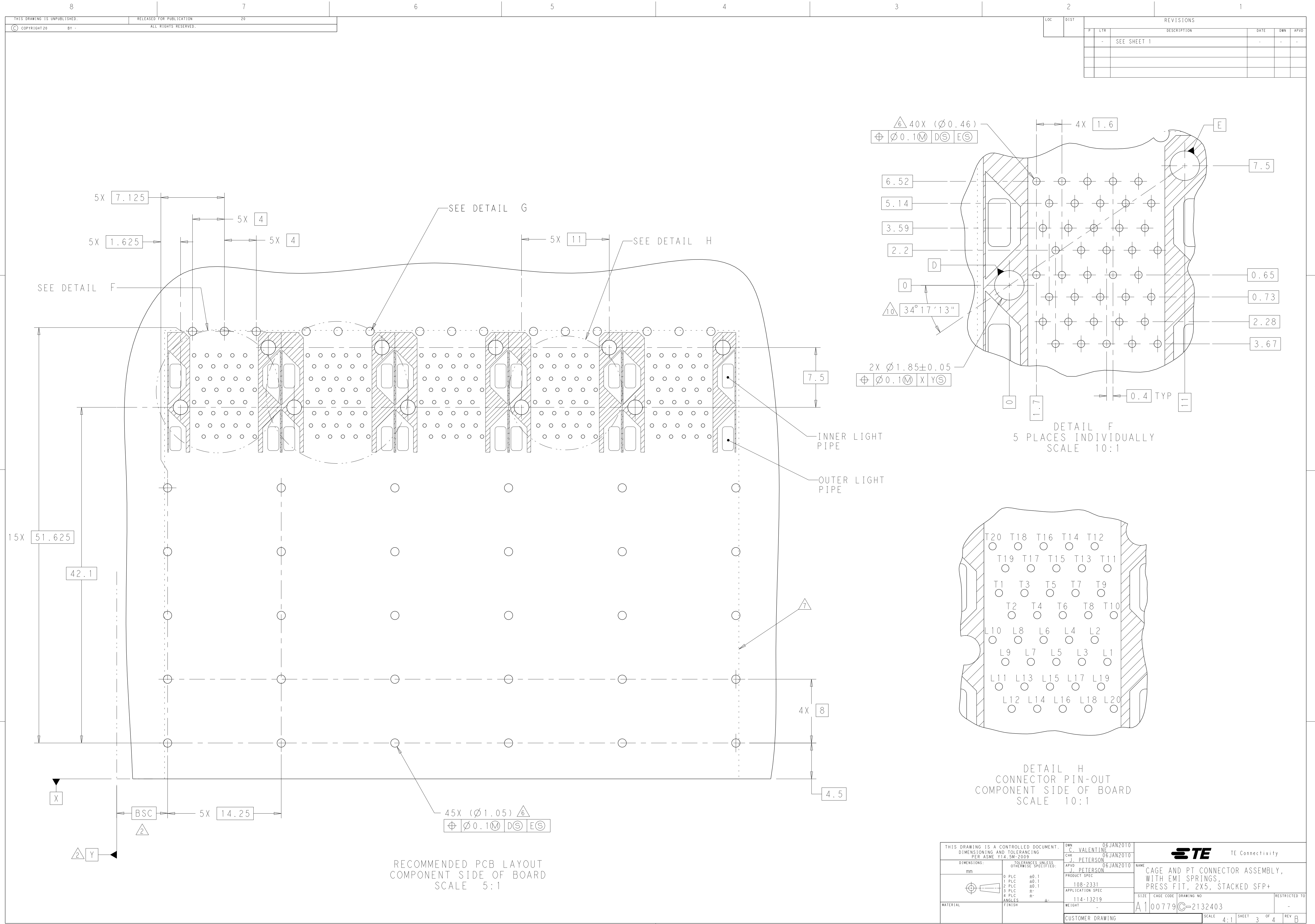


2132403-7 AND 1-2132403-7
SCALE 3:1

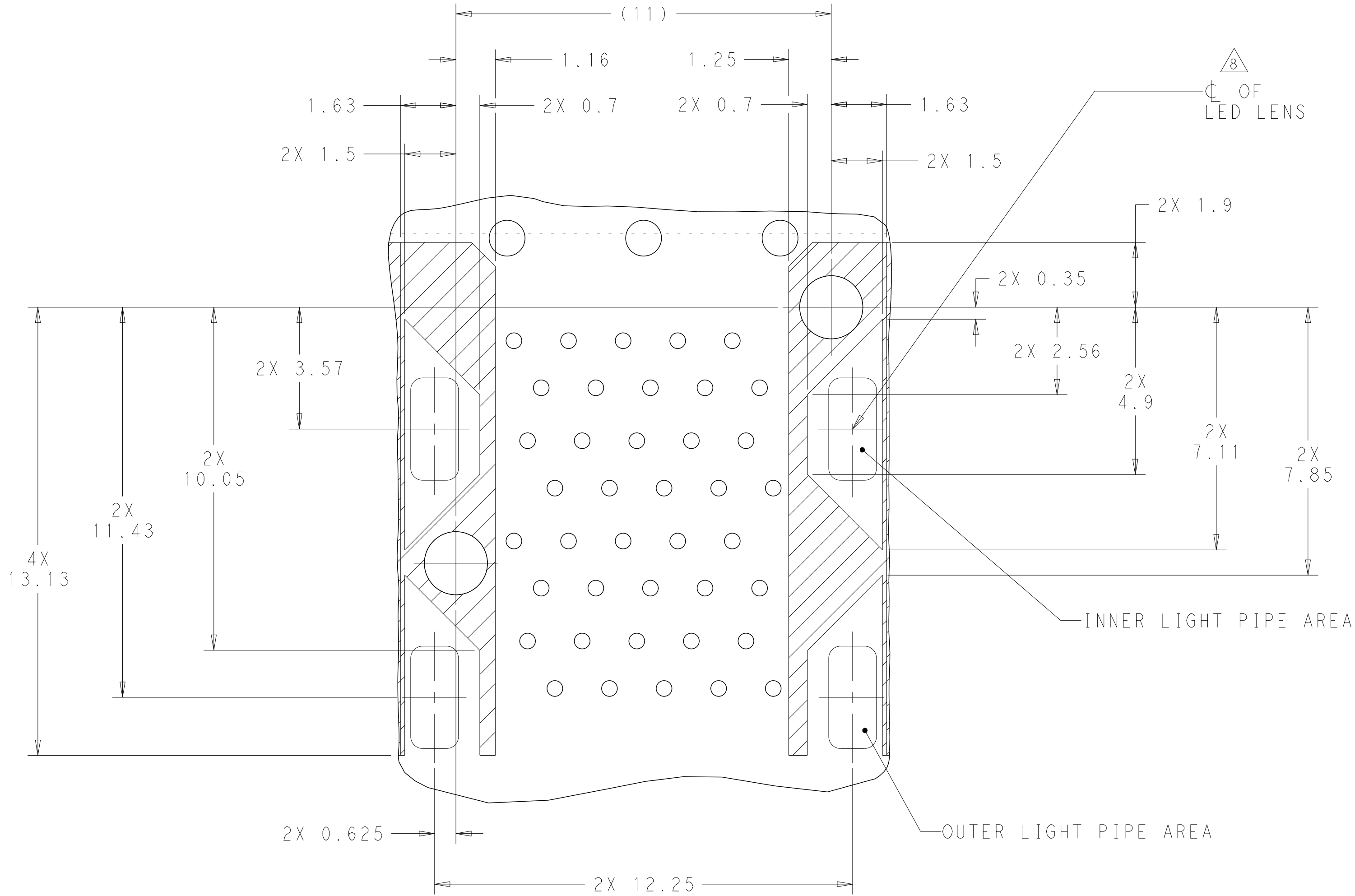


2132403-8 AND 1-2132403-8
SCALE 3:1

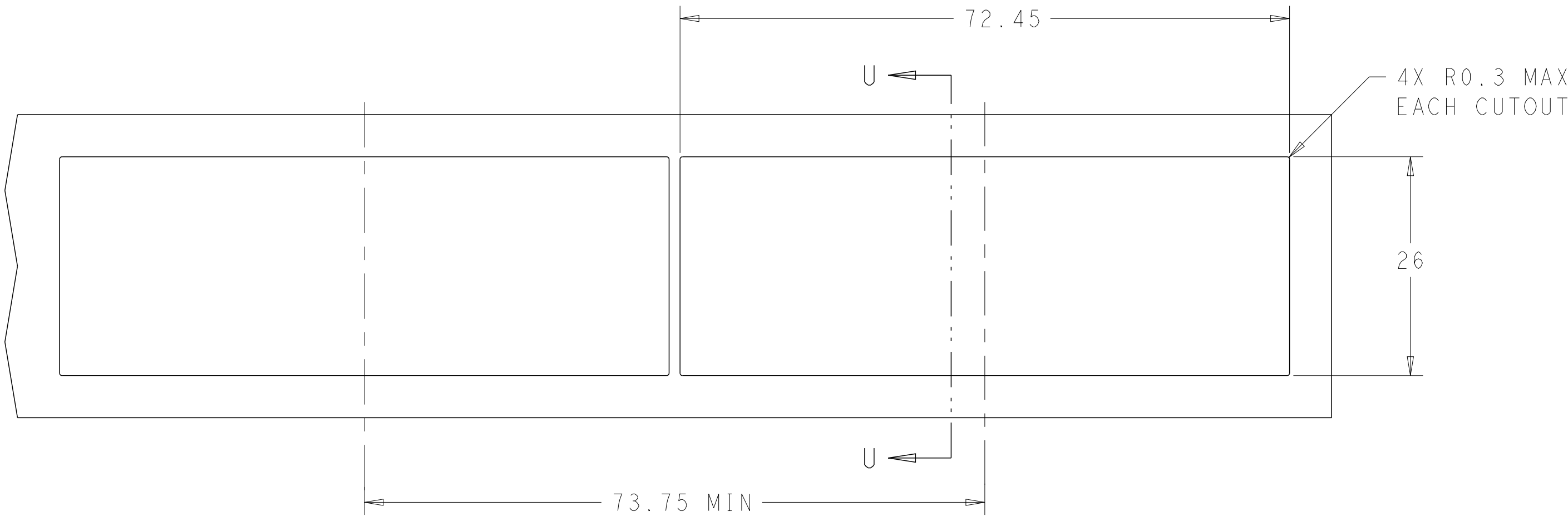
THIS DRAWING IS A CONTROLLED DOCUMENT. DIMENSIONING AND TOLERANCING PER ASME Y14.5M-2009		DWN C. VALENTINE 06JAN2010	 TE Connectivity	
		CHK J. PETERSON 06JAN2010		
DIMENSIONS:		APVD J. PETERSON 06JAN2010	NAME CAGE AND PT CONNECTOR ASSEMBLY, WITH EMI SPRINGS, PRESS FIT, 2X5, STACKED SFP+	
mm		PRODUCT SPEC		
		108-2331	SIZE A1	
		APPLICATION SPEC		
MATERIAL		114-13219	CAGE CODE 00779	
		WEIGHT		
		CUSTOMER DRAWING	DRAWING NO 2132403	
		SCALE 4:1	SHEET 2	
		OF 4		REV B



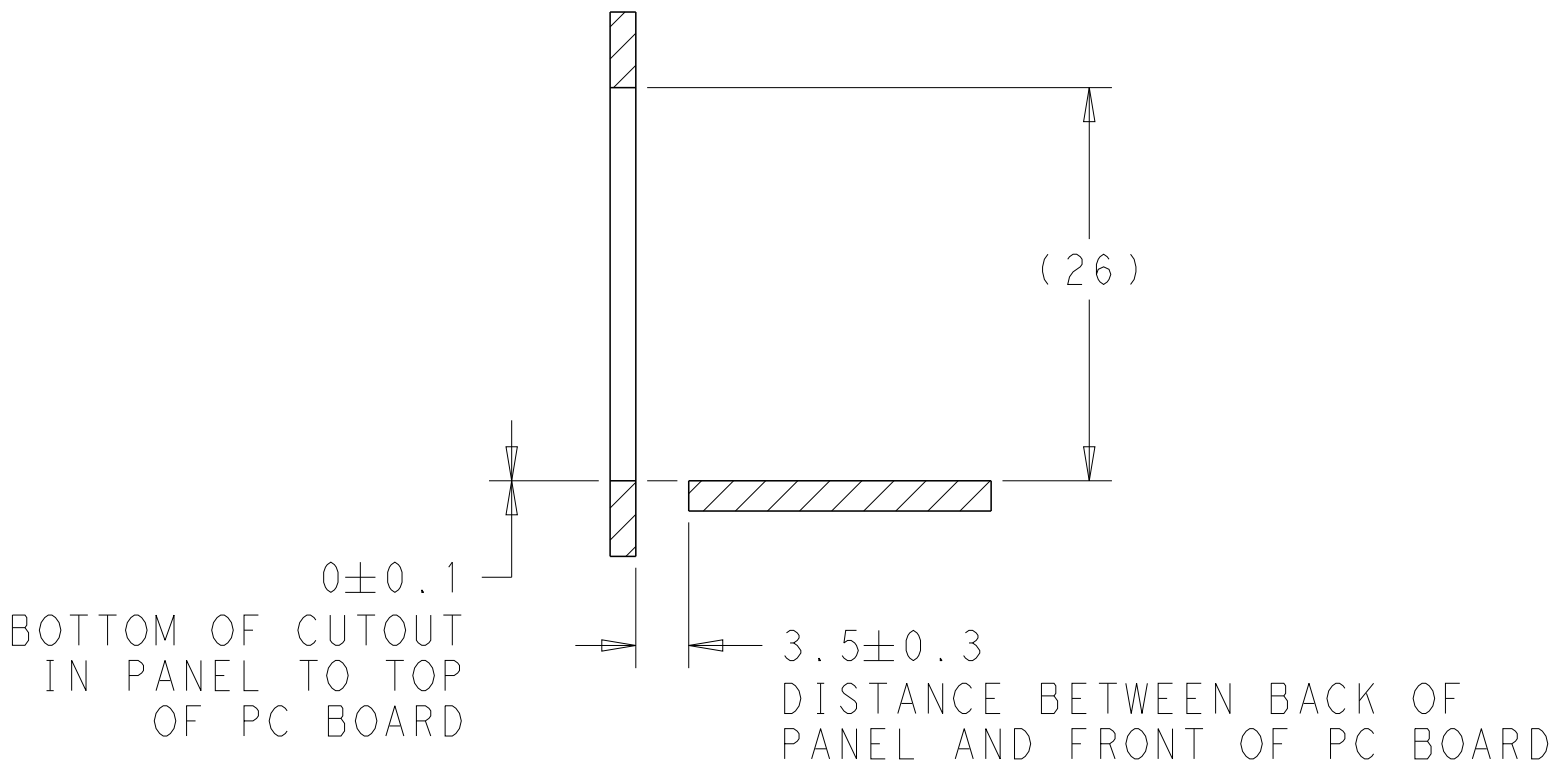
LOC		DIST		REVISIONS				
P	LTR	DESCRIPTION			DATE	DWN	APVD	
-	-	SEE SHEET 1			-	-	-	-



DETAIL G
CONNECTOR HOUSING
KEEPOUT ZONE
SCALE 10:1



RECOMMENDED PANEL CUTOUT
AND PC BOARD, PANEL POSITION
SCALE 2:1



SECTION U-U

THIS DRAWING IS A CONTROLLED DOCUMENT. DIMENSIONING AND TOLERANCING PER ASME Y14.5M-2009		DWN C. VALENTINE 06JAN2010	TE Connectivity	
		CHK J. PETERSON 06JAN2010		
DIMENSIONS: mm		APVD J. PETERSON 06JAN2010	NAME CAGE AND PT CONNECTOR ASSEMBLY, WITH EMI SPRINGS, PRESS FIT, 2X5, STACKED SFP+	
TOLERANCES UNLESS OTHERWISE SPECIFIED:		PRODUCT SPEC 108-2331		
0 PLC ±0.1 1 PLC ±0.1 2 PLC ±0.1 3 PLC ± 4 PLC ± ANGLES ± FINISH		APPLICATION SPEC 114-13219	SIZE CAGE CODE DRAWING NO RESTRICTED TO	
MATERIAL		WEIGHT -		
CUSTOMER DRAWING		A100779C=2132403		REV B
SCALE 4:1		SHEET 4 OF 4		

Mouser Electronics

Authorized Distributor

Click to View Pricing, Inventory, Delivery & Lifecycle Information:

[TE Connectivity:](#)

[1-2132403-6](#)