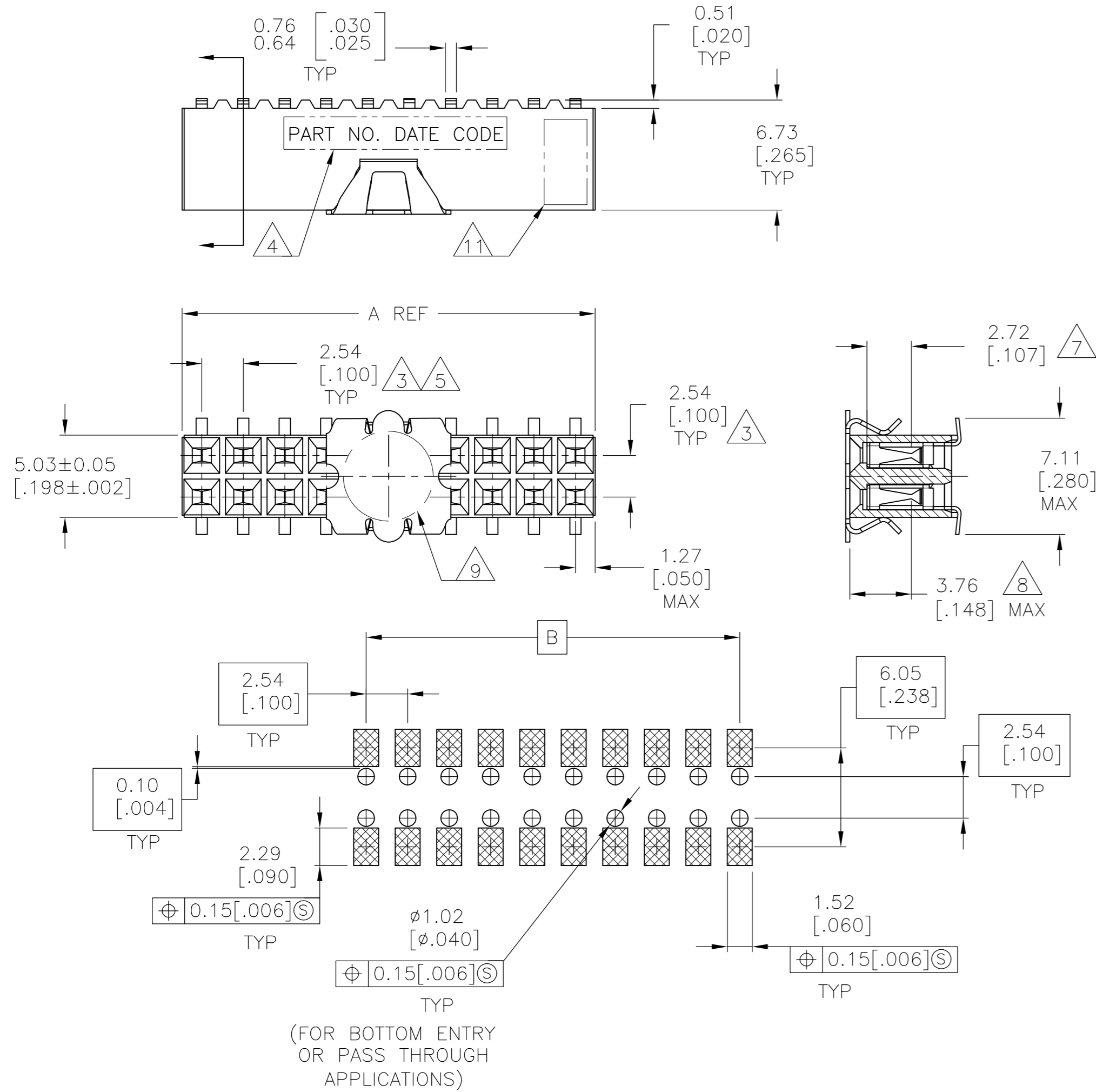


THIS DRAWING IS UNPUBLISHED. RELEASED FOR PUBLICATION
 © COPYRIGHT - By - ALL RIGHTS RESERVED.

LOC	DIST	REVISIONS					
		P	LTR	DESCRIPTION	DATE	DWN	APVD
AD	00	J9		REVISED PER ECO-13-005565	01APR13	KH	JO

FOR PART NUMBERS 5-147105-1 THRU 9-147105-0
 SEE SHEET 2



RECOMMENDED PC BOARD LAYOUT
 0.20[.008] THICK STENCIL

FINISH	EIA TAPE WIDTH	B	A	NO.OF POSN.	PART NUMBER
1	B	A	B	A	99.06[3.900]
					101.60[4.000]
					80
					4-147105-0
					96.52[3.800]
					99.06[3.900]
					78
					3-147105-9
					93.98[3.700]
					96.52[3.800]
					76
					3-147105-8
					91.44[3.600]
					93.98[3.700]
					74
					3-147105-7
					88.90[3.500]
					91.44[3.600]
					72
					3-147105-6
					86.36[3.400]
					88.90[3.500]
					70
					3-147105-5
83.82[3.300]					
86.36[3.400]					
68					
3-147105-4					
81.28[3.200]					
83.82[3.300]					
66					
3-147105-3					
78.74[3.100]					
81.28[3.200]					
64					
3-147105-2					
76.20[3.000]					
78.74[3.100]					
62					
3-147105-1					
73.66[2.900]					
76.20[3.000]					
60					
3-147105-0					
71.12[2.800]					
73.66[2.900]					
58					
2-147105-9					
68.58[2.700]					
71.12[2.800]					
56					
2-147105-8					
66.04[2.600]					
68.58[2.700]					
54					
2-147105-7					
63.50[2.500]					
66.04[2.600]					
52					
2-147105-6					
60.96[2.400]					
63.50[2.500]					
50					
2-147105-5					
58.42[2.300]					
60.96[2.400]					
48					
2-147105-4					
55.88[2.200]					
58.42[2.300]					
46					
2-147105-3					
53.34[2.100]					
55.88[2.200]					
44					
2-147105-2					
50.80[2.000]					
53.34[2.100]					
42					
2-147105-1					
48.26[1.900]					
50.80[2.000]					
40					
2-147105-0					
45.72[1.800]					
48.26[1.900]					
38					
1-147105-9					
43.18[1.700]					
45.72[1.800]					
36					
1-147105-8					
40.64[1.600]					
43.18[1.700]					
34					
1-147105-7					
38.10[1.500]					
40.64[1.600]					
32					
1-147105-6					
35.56[1.400]					
38.10[1.500]					
30					
1-147105-5					
33.02[1.300]					
35.56[1.400]					
28					
1-147105-4					
30.48[1.200]					
33.02[1.300]					
26					
1-147105-3					
27.94[1.100]					
30.48[1.200]					
24					
1-147105-2					
25.40[1.000]					
27.94[1.100]					
22					
1-147105-1					
22.86[.900]					
25.40[1.000]					
20					
1-147105-0					
20.32[.800]					
22.86[.900]					
18					
147105-9					
17.78[.700]					
20.32[.800]					
16					
147105-8					
15.24[.600]					
17.78[.700]					
14					
147105-7					
12.70[.500]					
15.24[.600]					
12					
147105-6					
10.16[.400]					
12.70[.500]					
10					
147105-5					
7.62[.300]					
10.16[.400]					
8					
147105-4					
5.08[.200]					
7.62[.300]					
6					
147105-3					
2.54[.100]					
5.08[.200]					
4					
147105-2					
24mm	-	2.54[.100]	2	147105-1	

THIS DRAWING IS A CONTROLLED DOCUMENT.

DIMENSIONS: mm [INCHES]

TOLERANCES UNLESS OTHERWISE SPECIFIED:

0 PLC	± -
1 PLC	± -
2 PLC	± .005[0.13]
3 PLC	± -
4 PLC	± -
ANGLES	± -

MATERIAL: 1

FINISH: SEE TABLE

APPROVED: J. OLSON

DATE: 06NOV02

PRODUCT SPEC: 108-25022

WEIGHT: 114-25018

CUSTOMER DRAWING

TE Connectivity

RECEPTACLE ASSEMBLY, MOD IV, DOUBLE ROW, DUAL ENTRY, .100X.100CL, SURFACE MOUNT, AMPMODU

SIZE: A2

CAGE CODE: 00779

DRAWING NO: 147105

RESTRICTED TO: -

SCALE: 4:1

SHEET: 1 of 2

REV: J9

Mouser Electronics

Authorized Distributor

Click to View Pricing, Inventory, Delivery & Lifecycle Information:

[TE Connectivity:](#)

[147105-4](#)