

SERIES 62HR

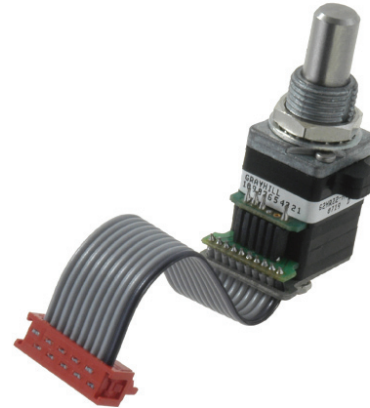
1/2" Package, Redundant Circuitry High Torque

FEATURES

- Redundant Circuitry
- 1 Million Rotational Cycles
- Compatible with CMOS, TTL and HCMOS Logic
- Optional Integral Pushbutton
- Available in 12, 16, 24, and 32 Detent Positions
- Choices of Cable Length and Terminations
- Ideal for Critical Applications

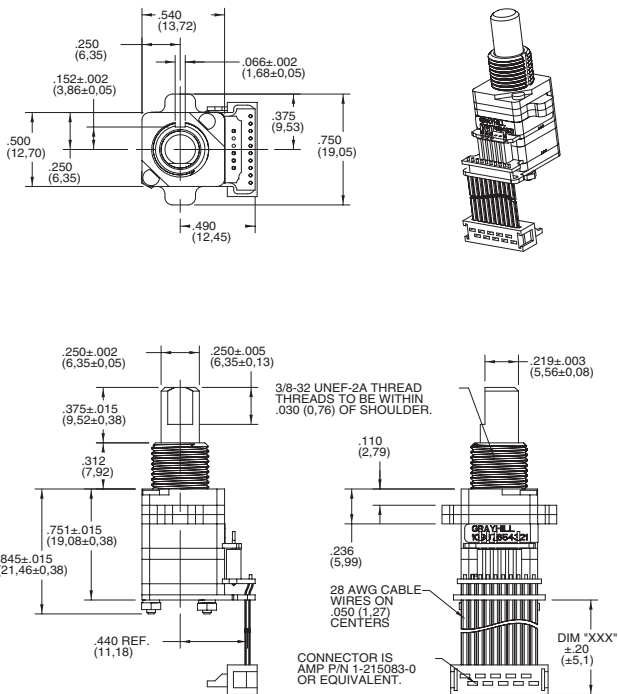
APPLICATIONS

- Cockpit Controls
- Medical Equipment



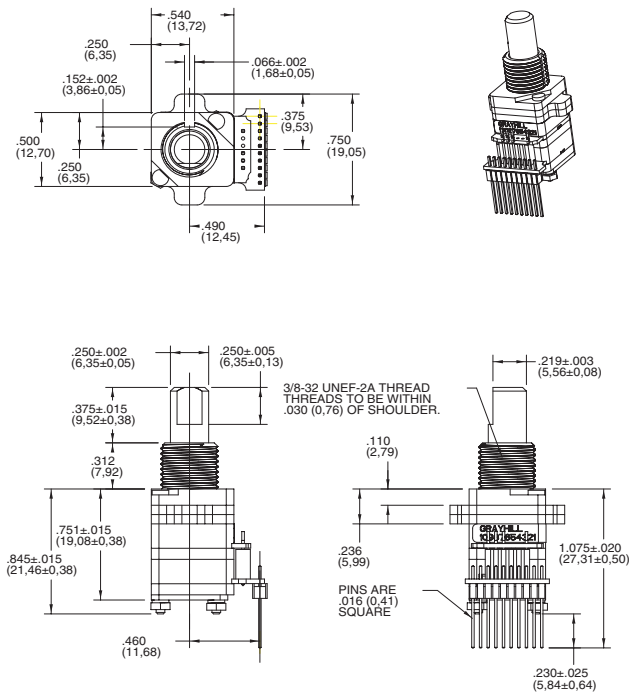
DIMENSIONS in inches (and millimeters)

SERIES 62HR WITH .050 CENTER RIBBON CABLE



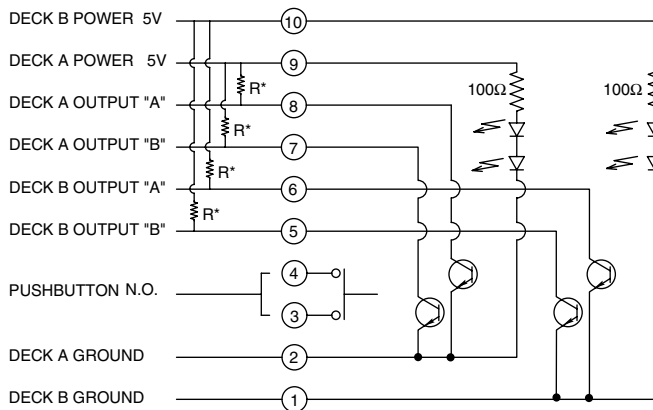
UNLESS OTHERWISE SPECIFIED, STANDARD TOLERANCE IS ± 0.10 (0.25).

SERIES 62HR WITH .050 CENTER TERMINAL PINS



UNLESS OTHERWISE SPECIFIED, STANDARD TOLERANCE IS ± 0.10 (0.25).

CIRCUITRY, TRUTH TABLE, AND WAVEFORM Standard Quadrature 2-Bit Code

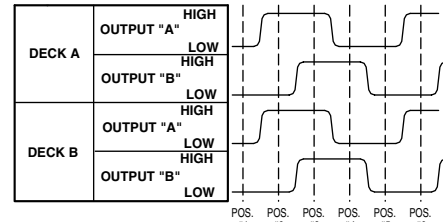
Switch Schematic


* 2.2k EXTERNAL PULL-UP RESISTORS REQUIRED FOR OPERATION

Truth Table (CW Rotation)

POSITION	DECK A		DECK B	
	OUTPUT 'A'	OUTPUT 'B'	OUTPUT 'A'	OUTPUT 'B'
1				
2	●		●	
3	●	●	●	●
4		●		●

● INDICATES LOGIC HIGH. BLANK INDICATES LOGIC LOW. CODE REPEATS EVERY 4 POSITIONS

Wave Form (CW Rotation)

SPECIFICATIONS
Pushbutton Switch Ratings

Rating: at 5 Vdc, 10 mA, resistive
Contact Resistance: less than 10 ohms (TTL or CMOS compatible)
Pushbutton Life: 3 million actuations minimum
Voltage Breakdown: 250 Vac between mutually insulated parts
Contact Bounce: less than 4 mS at make and less than 10 mS at break
Actuation Force: 1100 ±300g

Encoder Ratings

Coding: 2-bit quadrature coded output
Operating Voltage: 5.0 ±.25 Vdc
Supply Current: 30 mA maximum @ 5.0 Vdc
Logic Output Characteristics:
Logic High: 3.0 Vdc minimum
Logic Low: 1.0 Vdc maximum
Mechanical Life: 1,000,000 cycles minimum (One cycle is a rotation through all positions and a full return)
Minimum Sink Current: 2.0 mA for 5 Vdc
Power Consumption: 150mW maximum
Output: open collector phototransistor
Logic Rise and Fall: less than 30 mS maximum

Operating Torque: 5.0 in-oz +/- 1.5 in-oz initial
Shaft Push Out Force: 45 lbs minimum
Mounting Torque: 15 in-lbs maximum
Terminal Strength: 15 lbs cable pull-out force minimum
Operating Speed: 100 RPM maximum

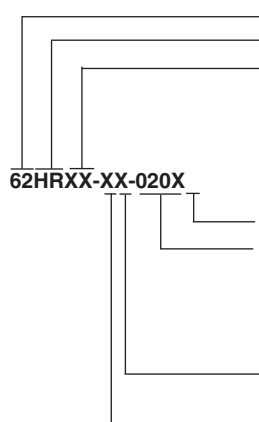
Environmental Ratings

Operating Temperature Range: -40°C to 85°C
Storage Temperature Range: -55°C to 100°C
Vibration Resistance: Harmonic motion with amplitude of 15G, within a varied 10 to 2000 Hz frequency for 12 hours
Mechanical Shock: Test 1: 100G, 6 mS, half sine, 12.3 ft/s; Test 2: 100G, 6 mS, sawtooth, 9.7 ft/s
Relative Humidity: 90–95% at 40°C for 96 hours

Materials and Finishes

Code Housing: Reinforced thermoplastic
Shaft: Stainless Steel

Bushing: Zinc casting
Shaft Retaining Ring: Stainless steel
Detent Spring: Stainless steel
Detent Ball: Stainless steel
Detent Section: Hiloy 610
Printed Circuit Boards: NEMA grade FR-4 gold over nickel or palladium
Terminals: Brass, tin-plated
Mounting Hardware: One brass, nickel-plated nut and zinc-plated spring steel with clear trivalent chromate finish lockwasher supplied with each switch. (Nut is 0.094 inches thick by 0.433 inches across flats)
Rotor: Thermoplastic
Pushbutton Dome: Stainless steel
Phototransistor: Planar Silicon NPN
Infrared Emitter: Gallium aluminum arsenide
Flex Cable: 28 AWG, stranded/top coated wire, PVC coated on .050" centers (cabled version)
Header Pins: Brass, tin-plated
Spacer: Hiloy 610
Shim: Stainless Steel
Backplate/Strain Relief: Stainless steel

ORDERING INFORMATION

Series

Style: HR = High Torque, Redundant

Angle of Throw: 45 = 45° or 8 positions, 30 = 30° or 12 positions, 22 = 22.5° or 16 positions

Termination: S = stripped cable, C = connector, P = pins

Cable Length: 020 = 2.0 inches. Cable is terminated with Amp Connector P/N 1-215083-0. See Amp Mateability Guide for mating connector details.

*Eliminate cable length if ordering

pins. (Ex: 62HR22-H9-P)

Pushbutton Option: 0 = w/o pushbutton, 9 = 1100g pushbutton

Rotational Torque: H = High Torque

Mouser Electronics

Authorized Distributor

Click to View Pricing, Inventory, Delivery & Lifecycle Information:

Grayhill:

[62HR22-H9-020C](#) [62HR22-H9-020S](#) [62HR22-H0-020C](#)