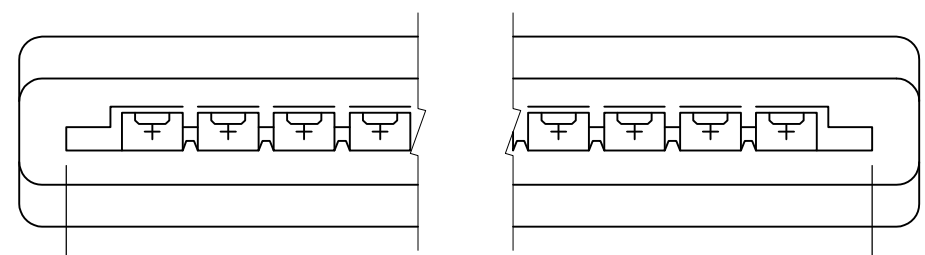
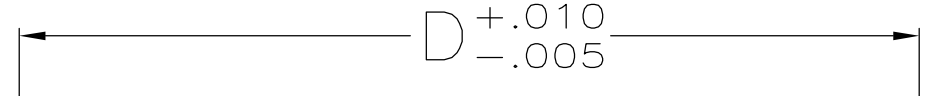


THIS DRAWING IS UNPUBLISHED. RELEASED FOR PUBLICATION  
 © COPYRIGHT - By - ALL RIGHTS RESERVED.

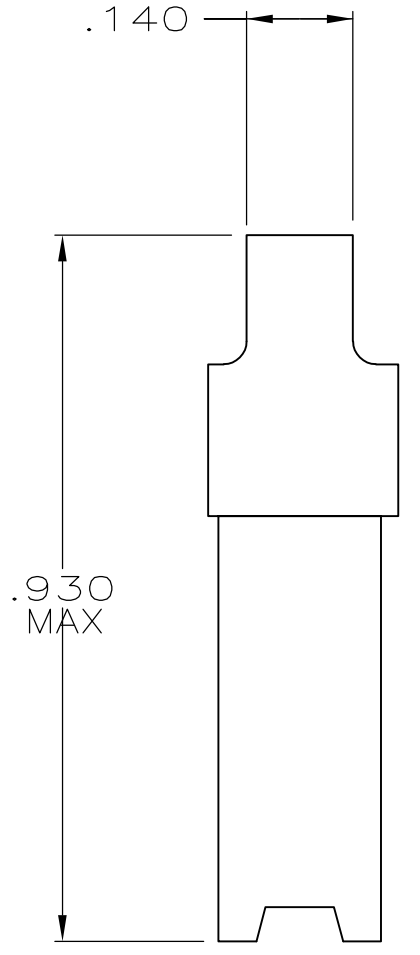
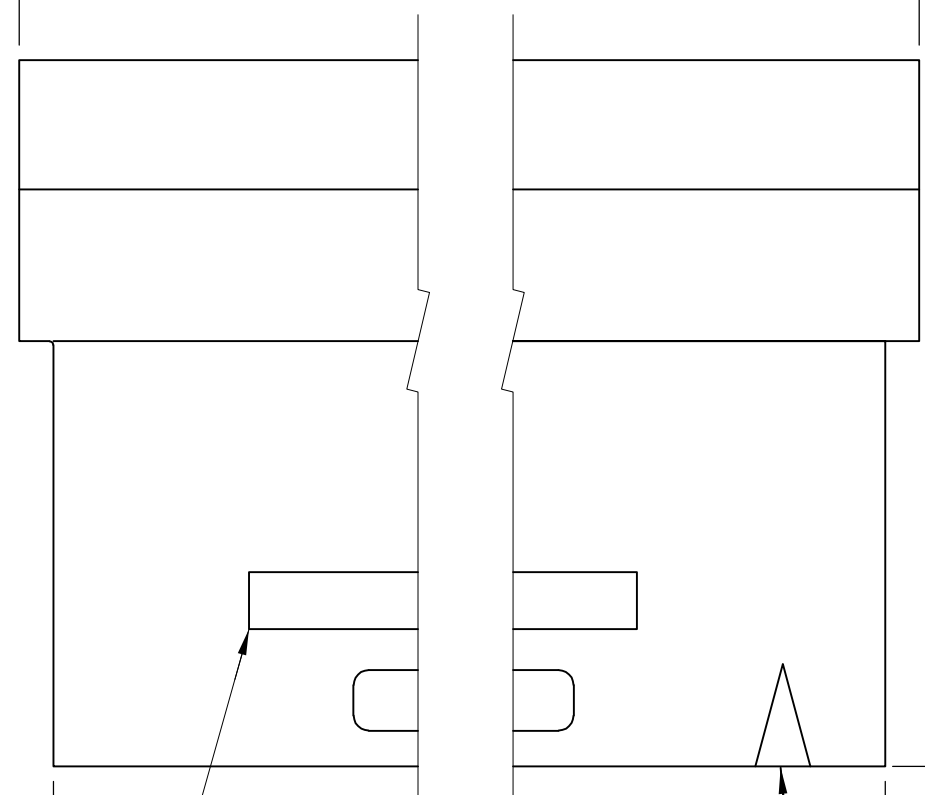
LOC	DIST	REVISIONS			
P	LTR	DESCRIPTION	DATE	DWN	APVD
AR	39	V2 REVISED PER ECO-11-004835	11MAR11	RK	HMR



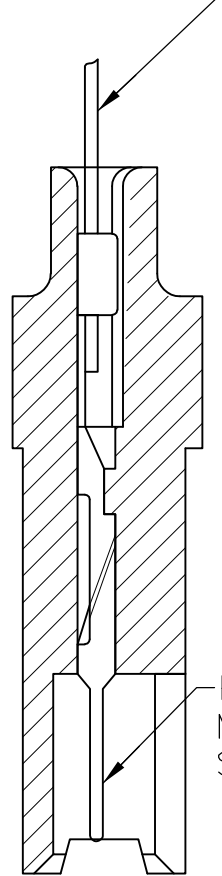
C  $+0.010$   
 $-0.005$



D  $+0.010$   
 $-0.005$



CABLE AND/OR WIRE SUPPLIED BY CUSTOMER



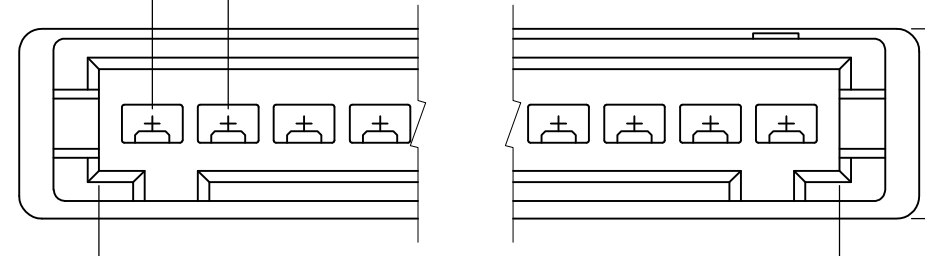
5 OBSOLETE

PIN CONTACTS MUST BE ORDERED SEPARATELY

CRIMPED CONTACT SHOWN FOR REFERENCE ONLY



B  $+0.010$   
 $-0.005$



A  $+0.010$   
 $-0.004$

3.750	3.626	3.660	3.540	35	4	3-485893-3
3.650	3.526	3.560	3.440	34	4	3-485893-2
3.550	3.426	3.460	3.340	33	4	3-485893-1
3.450	3.326	3.360	3.240	32	4	3-485893-0
3.350	3.226	3.260	3.140	31	4	2-485893-9
3.250	3.126	3.160	3.040	30	4	2-485893-8
3.150	3.026	3.060	2.940	29	4	2-485893-7
3.050	2.926	2.960	2.840	28	4	2-485893-6
2.950	2.826	2.860	2.740	27	4	2-485893-5
2.850	2.726	2.760	2.640	26	4	2-485893-4
2.750	2.626	2.660	2.540	25	2	485893-3
2.650	2.526	2.560	2.440	24	4	2-485893-2
2.550	2.426	2.460	2.340	23	4	2-485893-1
2.450	2.326	2.360	2.240	22	4	2-485893-0
2.350	2.226	2.260	1.140	21	4	1-485893-9
2.250	2.126	2.160	2.040	20		1-485893-8
2.150	2.026	2.060	1.940	19	4	1-485893-7
2.050	1.926	1.960	1.840	18		1-485893-6
1.950	1.826	1.860	1.740	17	4	1-485893-5
1.850	1.726	1.760	1.640	16		1-485893-4
1.750	1.626	1.660	1.540	15		1-485893-3
1.650	1.526	1.560	1.440	14		1-485893-2
1.550	1.426	1.460	1.340	13		1-485893-1
1.450	1.326	1.360	1.240	12		1-485893-0
1.350	1.226	1.260	1.140	11		485893-9
1.250	1.126	1.160	1.040	10		485893-8
1.150	1.026	1.060	.940	9		485893-7
1.050	.926	.960	.840	8		485893-6
.950	.826	.860	.740	7		485893-5
.850	.726	.760	.640	6		485893-4
.750	.626	.660	.540	5		485893-3
.650	.526	.560	.440	4		485893-2
.550	.426	.460	.340	3		485893-1

SUPERSEDED BY 494032-2

1. HOUSING WILL ACCOMMODATE FLEXIBLE FLAT CONDUCTOR CABLE  
 .050 OR .062 WIDE CONDUCTORS ON .100 CENTERS AND/OR  
 #32-22 AWG WIRE WITH INSULATION RANGE .025-.056 DIAMETER.

- 2 AMP TRADEMARK MOLDED IN THIS AREA
- 3 INDICATES FIRST POSITION
- 4 OBSOLETE PART NUMBER
- 5 OBSOLETE PARTS: OBSOLETE CIS STREAMLINING PER D.RENAUD/D.SINISI

D	C	B	A	NO. OF POSN.	PART NUMBER
THIS DRAWING IS A CONTROLLED DOCUMENT.					
DIMENSIONS: INCHES		TOLERANCES UNLESS OTHERWISE SPECIFIED:		DWN KATE HELM 11/03/88	
0 PLC ± -		1 PLC ± -		CHK D.ROCKER 3-6-89	
1 PLC ± -		2 PLC ± -		APVD G.D.MILLER 3-6-89	
2 PLC ± -		3 PLC ± .010		NAME	
3 PLC ± -		4 PLC ± -		G.D.MILLER	
4 PLC ± -		ANGLES ± -		PRODUCT SPEC	
MATERIAL THERMOPLASTIC COLOR: BLACK		FINISH -		APPLICATION SPEC	
				WEIGHT -	
				SIZE A2	
				CAGE CODE 00779	
				DRAWING NO C=485893	
				RESTRICTED TO -	
				CUSTOMER DRAWING	
				SCALE 4:1	
				SHEET 1 OF 1	
				REV V2	

# Mouser Electronics

Authorized Distributor

Click to View Pricing, Inventory, Delivery & Lifecycle Information:

[TE Connectivity:](#)

[485893-8](#)