

## Base strip - MSTBVA 2,5/15-G - 1755639

Please be informed that the data shown in this PDF Document is generated from our Online Catalog. Please find the complete data in the user's documentation. Our General Terms of Use for Downloads are valid (<http://phoenixcontact.com/download>)

Header, Nominal current: 12 A, Rated voltage (III/2): 320 V, Number of positions: 15, Pitch: 5 mm, Color: green, Contact surface: Tin, Mounting: Wave soldering




The figure shows a 10-position version of the product

### Product Features

- Versions with and without side panel
- Other pin lengths available on request
- Plug-in direction parallel and vertical to the PCB
- Standard pin strip for 320 V (III/2)



### Key Commercial Data

|                                      |   |
|--------------------------------------|---|
| Packing unit                         | 1 pc  |
| GTIN                                 | <br>4 017918 029210 |
| Weight per Piece (excluding packing) | 6.8 g   |
| Custom tariff number                 | 85366990  |
| Country of origin                    | Germany   |

### Technical data

#### Dimensions

|                       |         |
|-----------------------|---------|
| Length                | 8.6 mm  |
| Pitch                 | 5.00 mm |
| Dimension a           | 70 mm   |
| Width                 | 77 mm   |
| Constructional height | 12 mm   |

## Base strip - MSTBVA 2,5/15-G - 1755639

### Technical data

#### Dimensions

|                          |          |
|--------------------------|----------|
| Height                   | 15.9 mm  |
| Length of the solder pin | 3.9 mm   |
| Pin dimensions           | 1 x 1 mm |
| Hole diameter            | 1.4 mm   |

#### General

|  |                  |
|--|------------------|
| Range of articles                      | MSTBVA 2,5/...-G |
| Insulating material group              | IIIa             |
| Rated surge voltage (III/3)            | 4 kV             |
| Rated surge voltage (III/2)            | 4 kV             |
| Rated surge voltage (II/2)             | 4 kV             |
| Rated voltage (III/3)                  | 250 V            |
| Rated voltage (III/2)                  | 320 V            |
| Rated voltage (II/2)                   | 400 V            |
| Connection in acc. with standard       | EN-VDE           |
| Nominal current $I_N$                  | 12 A             |
| Maximum load current                   | 12 A             |
| Insulating material                    | PBT              |
| Flammability rating according to UL 94 | V0               |
| Color                                  | green            |
| Number of positions                    | 15               |

#### Standards and Regulations

|  |        |
|--|--------|
| Connection in acc. with standard       | EN-VDE |
|  | CSA    |
| Flammability rating according to UL 94 | V0     |

### Classifications

#### eCl@ss

|            |          |
|------------|----------|
| eCl@ss 4.0 | 272607xx |
| eCl@ss 4.1 | 27260701 |
| eCl@ss 5.0 | 27260701 |
| eCl@ss 5.1 | 27260701 |
| eCl@ss 6.0 | 27260704 |
| eCl@ss 7.0 | 27440402 |
| eCl@ss 8.0 | 27440402 |
| eCl@ss 9.0 | 27440402 |

# Base strip - MSTBVA 2,5/15-G - 1755639

## Classifications

### ETIM

|          |          |
|----------|----------|
| ETIM 3.0 | EC001121 |
| ETIM 4.0 | EC002637 |
| ETIM 5.0 | EC002637 |

### UNSPSC

|               |          |
|---------------|----------|
| UNSPSC 6.01   | 30211810 |
| UNSPSC 7.0901 | 39121409 |
| UNSPSC 11     | 39121409 |
| UNSPSC 12.01  | 39121409 |
| UNSPSC 13.2   | 39121409 |

## Approvals

### Approvals


#### Approvals

CSA / VDE Gutachten mit Fertigungsüberwachung / IECEx CB Scheme / EAC / cULus Recognized / EAC

#### Ex Approvals

#### Approvals submitted

### Approval details

|   |       |       |
|---|-------|-------|
| CSA  |       |       |
|   | B     | D     |
| Nominal current I <sub>N</sub>  | 12 A  | 10 A  |
| Nominal voltage U <sub>N</sub>  | 300 V | 300 V |

|   |      |
|---|------|
| VDE Gutachten mit Fertigungsüberwachung  |      |
| Nominal current I <sub>N</sub>  | 12 A |

## Base strip - MSTBVA 2,5/15-G - 1755639

### Approvals

|                    |       |
|--------------------|-------|
| Nominal voltage UN | 250 V |
|--------------------|-------|

|                    |       |
|--------------------|-------|
| IECEE CB Scheme    |       |
| Nominal current IN | 12 A  |
| Nominal voltage UN | 250 V |

|     |
|-----|
| EAC |
|-----|

|                    |       |       |
|--------------------|-------|-------|
| cULus Recognized   |       |       |
|                    | B     | D     |
| Nominal current IN | 12 A  | 10 A  |
| Nominal voltage UN | 300 V | 300 V |

|     |
|-----|
| EAC |
|-----|

### Accessories

#### Accessories

#### Coding element

Coding star - CR-MSTB - 1734401



Coding section, inserted into the recess in the header or the inverted plug, red insulating material

#### Filler plug

Accessories - MSTB-BL - 1755477



Keying cap, for forming sections, plugs onto header pin, green insulating material

## Base strip - MSTBVA 2,5/15-G - 1755639

### Accessories

#### Labeled terminal marker

Marker card - SK 5/3,8:FORTL.ZAHLEN - 0804183



Marker card, Card, white, labeled, Horizontal: Consecutive numbers 1 - 10, 11 - 20, etc. up to 91 - (99)100, Mounting type: Adhesive, for terminal block width: 5 mm, Lettering field: 5 x 3.8 mm

---

### Additional products

Plug - QC 1,5/15-ST - 1718096



Plug component, Nominal current: 12 A, Rated voltage (III/2): 630 V, Number of positions: 15, Pitch: 5 mm, Connection method: Displacement connection, Color: green, Contact surface: Tin

---

Printed-circuit board connector - FKCN 2,5/15-ST - 1732865



Plug component, Nominal current: 12 A, Rated voltage (III/2): 320 V, Number of positions: 15, Pitch: 5 mm, Connection method: Push-in spring connection, Color: green, Contact surface: Tin

---

Printed-circuit board connector - MSTB 2,5/15-ST - 1754708



Plug component, Nominal current: 12 A, Rated voltage (III/2): 320 V, Number of positions: 15, Pitch: 5 mm, Connection method: Screw connection with tension sleeve, Color: green, Contact surface: Tin

---

Printed-circuit board connector - MSTB 2,5/15-STZ - 1759389



Plug component, Nominal current: 12 A, Rated voltage (III/2): 320 V, Number of positions: 15, Pitch: 5 mm, Connection method: Screw connection with tension sleeve, Color: green, Contact surface: Tin

## Base strip - MSTBVA 2,5/15-G - 1755639

### Accessories

---

#### Printed-circuit board connector - MSTBP 2,5/15-ST - 1765904



Plug component, Nominal current: 12 A, Rated voltage (III/2): 320 V, Number of positions: 15, Pitch: 5 mm, Connection method: Screw connection with tension sleeve, Color: green, Contact surface: Tin

#### Printed-circuit board connector - SMSTB 2,5/15-ST - 1768888



Plug component, Nominal current: 12 A, Rated voltage (III/2): 320 V, Number of positions: 15, Pitch: 5 mm, Connection method: Screw connection with tension sleeve, Color: green, Contact surface: Tin

#### Printed-circuit board connector - FRONT-MSTB 2,5/15-ST - 1779547



Plug component, Nominal current: 12 A, Rated voltage (III/2): 320 V, Number of positions: 15, Pitch: 5 mm, Connection method: Front screw connection, Color: green, Contact surface: Tin

#### Printed-circuit board connector - MSTBT 2,5/15-ST - 1779961



Plug component, Nominal current: 12 A, Rated voltage (III/2): 320 V, Number of positions: 15, Pitch: 5 mm, Connection method: Screw connection with tension sleeve, Color: green, Contact surface: Tin

#### Printed-circuit board connector - MVSTBR 2,5/15-ST - 1792142



Plug component, Nominal current: 12 A, Rated voltage (III/2): 320 V, Number of positions: 15, Pitch: 5 mm, Connection method: Screw connection with tension sleeve, Color: green, Contact surface: Tin

## Base strip - MSTBVA 2,5/15-G - 1755639

### Accessories

#### Printed-circuit board connector - MVSTBW 2,5/15-ST - 1792650



Plug component, Nominal current: 12 A, Rated voltage (III/2): 320 V, Number of positions: 15, Pitch: 5 mm, Connection method: Screw connection with tension sleeve, Color: green, Contact surface: Tin

---

#### Printed-circuit board connector - FKCT 2,5/15-ST - 1909346



Plug component, Nominal current: 12 A, Rated voltage (III/2): 320 V, Number of positions: 15, Pitch: 5 mm, Connection method: Push-in spring connection, Color: green, Contact surface: Tin

---

#### Printed-circuit board connector - FKCVR 2,5/15-ST - 1909841



Plug component, Nominal current: 12 A, Rated voltage (III/2): 320 V, Number of positions: 15, Pitch: 5 mm, Connection method: Push-in spring connection, Color: green, Contact surface: Tin

---

#### Printed-circuit board connector - FKCVW 2,5/15-ST - 1910160



Plug component, Nominal current: 12 A, Rated voltage (III/2): 320 V, Number of positions: 15, Pitch: 5 mm, Connection method: Push-in spring connection, Color: green, Contact surface: Tin

---

#### Printed-circuit board connector - FKC 2,5/15-ST - 1910487



Plug component, Nominal current: 12 A, Rated voltage (III/2): 320 V, Number of positions: 15, Pitch: 5 mm, Connection method: Push-in spring connection, Color: green, Contact surface: Tin

## Base strip - MSTBVA 2,5/15-G - 1755639

### Accessories

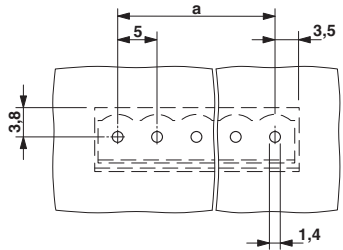
Printed-circuit board connector - FKCS 2,5/15-ST - 1974863

Plug component, Nominal current: 12 A, Rated voltage (III/2): 320 V, Number of positions: 15, Pitch: 5 mm, Connection method: Push-in spring connection, Color: green, Contact surface: Tin

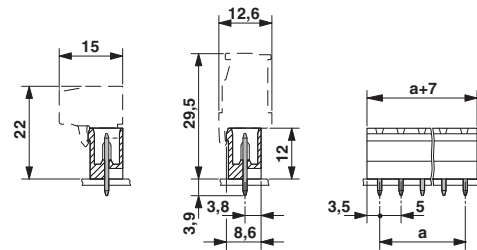


### Drawings

Drilling diagram



Dimensional drawing





# Mouser Electronics

Authorized Distributor

Click to View Pricing, Inventory, Delivery & Lifecycle Information:

[Phoenix Contact:](#)

[1755639](#)