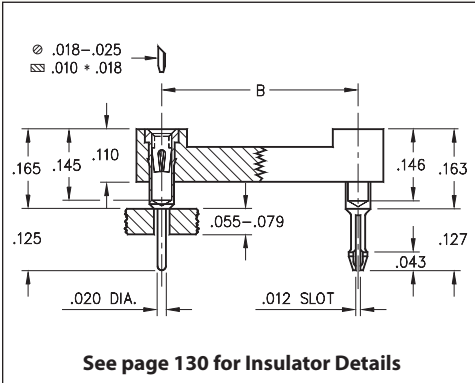
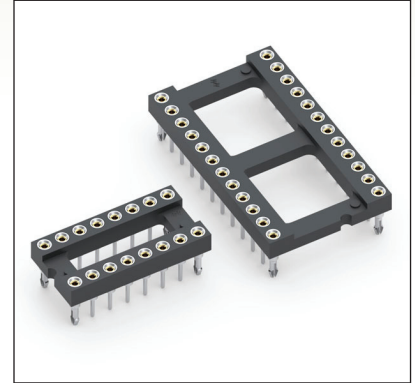


DUAL-IN-LINE SOCKETS

SERIES 101 • CLINCH PIN • OPEN FRAME



- Special lock-down feature prevents floating of socket during soldering. Open insulator with ladder construction
- Socket pins feature closed end construction eliminating any solder wicking problems
- Hi-Rel, 4-finger BeCu #30 contact is rated at 3 amps. See page 253 for details
- Series 101 uses MM #1001 and MM #0156 pins. See page 165 for details
- Insulators are high temperature thermoplastic, suitable for all soldering operations
- For Electrical, Mechanical and Environmental Data, see page 264 for details



Total number of pins				Quantity per tube	ORDERING INFORMATION				
	A	B	C						
6	0.3	0.3	0.4	67	101-93-306-41-56X000				
8	0.4	0.3	0.4	50	101-93-308-41-56X000				
14	0.7	0.3	0.4	28	101-93-314-41-56X000				
16	0.8	0.3	0.4	25	101-93-316-41-56X000				
18	0.9	0.3	0.4	22	101-93-318-41-56X000				
20	1.0	0.3	0.4	20	101-93-320-41-56X000				
24	1.2	0.3	0.4	16	101-93-324-41-56X000				
28	1.4	0.3	0.4	14	101-93-328-41-56X000				
22	1.1	0.4	0.5	18	101-93-422-41-56X000				
24	1.2	0.6	0.7	16	101-93-624-41-56X000				
28	1.4	0.6	0.7	14	101-93-628-41-56X000				
32	1.6	0.6	0.7	12	101-93-632-41-56X000				
40	2.0	0.6	0.7	10	101-93-640-41-56X000				
48	2.4	0.6	0.7	8	101-93-648-41-56X000				
64	3.2	0.9	1.0	6	101-93-964-41-56X000				
Clinch Pins:					Two Opposite Corner Pins X = 0 Four Corner Pins X = 8				
XX=Plating Code See Below									
SPECIFY PLATING CODE XX =					93				
Sleeve (Pin)					200 μ" Sn/Pb				
Contact (Clip)					30 μ" Au				



Mouser Electronics

Authorized Distributor

Click to View Pricing, Inventory, Delivery & Lifecycle Information:

Mill-Max:

[101-93-964-41-560000](#) [101-93-648-41-560000](#) [101-93-640-41-560000](#) [101-93-632-41-560000](#) [101-93-628-41-560000](#) [101-93-624-41-560000](#) [101-93-422-41-560000](#) [101-93-328-41-560000](#) [101-93-324-41-560000](#) [101-93-320-41-560000](#) [101-93-318-41-560000](#) [101-93-316-41-560000](#) [101-93-314-41-560000](#) [101-93-308-41-560000](#) [101-93-306-41-560000](#)