



FCIconnect.com

Copyright FCI.

## Configuration of customer Documents list

P/N	Documents	No.	Title
SLW__R/S-1C7BLF	SPEC	SC-SLW05	
	DWG	JSA96312	CAT NO. TABLE FOR 1mm SPACING CONNECTOR
		JSA96313	1mm SPACING CONNECTOR
		JSA96314	1mm SPACING CONNECTOR
	CABLE	JSA96315	RECOMMENDED CABLE

mat'l. code				surface ISO 1302 <input checked="" type="checkbox"/>		tolerance ISO 406 ISO 1101		projection 		product family 58JF/TF				CODE JP	
ltr				ecn no		dr		date		tolerances unless otherwise specified		title			
A				J05-0079		H.T		'05/2/18		angles		1mm SPACING CONNECTOR			
B				J06-0459		H.T		11/8/'06		linear		DOCUMENT LIST			
												(Cat. No. SLW__R/S1C7BLF)			
										scale		X			
										dr		11/8/'06		sheet 1 of 1	
										enr		11/3/'06		size	
										chr		11/9/'06		A4	
										appd		11/9/'06		type	
sheet index				revision		B								Rev.	
sheet				1										B	

form: A4

1

2

## CAT. NO. &amp; DIMENSIONS

NO. OF CONTACTS (n)	CAT. NO.		DIMENSIONS (NOTE1)	
	RIGHT ANGLE TYPE	STRAIGHT TYPE	A ± 0.3	B ± 0.3
4	SLW 4R-1C7BLF	SLW 4S-1C7BLF	10.2	5.2
5	SLW 5R-1C7BLF	SLW 5S-1C7BLF	11.2	6.2
6	SLW 6R-1C7BLF	SLW 6S-1C7BLF	12.2	7.2
7	SLW 7R-1C7BLF	SLW 7S-1C7BLF	13.2	8.2
8	SLW 8R-1C7BLF	SLW 8S-1C7BLF	14.2	9.2
9	SLW 9R-1C7BLF	SLW 9S-1C7BLF	15.2	10.2
10	SLW10R-1C7BLF	SLW10S-1C7BLF	16.2	11.2
11	SLW11R-1C7BLF	SLW11S-1C7BLF	17.2	12.2
12	SLW12R-1C7BLF	SLW12S-1C7BLF	18.2	13.2
13	SLW13R-1C7BLF	SLW13S-1C7BLF	19.2	14.2
14	SLW14R-1C7BLF	SLW14S-1C7BLF	20.2	15.2
15	SLW15R-1C7BLF	SLW15S-1C7BLF	21.2	16.2
16	SLW16R-1C7BLF	SLW16S-1C7BLF	22.2	17.2
17	SLW17R-1C7BLF	SLW17S-1C7BLF	23.2	18.2
18	SLW18R-1C7BLF	SLW18S-1C7BLF	24.2	19.2
19	SLW19R-1C7BLF	SLW19S-1C7BLF	25.2	20.2
20	SLW20R-1C7BLF	SLW20S-1C7BLF	26.2	21.2
21	SLW21R-1C7BLF	SLW21S-1C7BLF	27.2	22.2
22	SLW22R-1C7BLF	SLW22S-1C7BLF	28.2	23.2
23	SLW23R-1C7BLF	SLW23S-1C7BLF	29.2	24.2
24	SLW24R-1C7BLF	SLW24S-1C7BLF	30.2	25.2
25	SLW25R-1C7BLF	SLW25S-1C7BLF	31.2	26.2
26	SLW26R-1C7BLF	SLW26S-1C7BLF	32.2	27.2
27	SLW27R-1C7BLF	SLW27S-1C7BLF	33.2	28.2
28	SLW28R-1C7BLF	SLW28S-1C7BLF	34.2	29.2
29	SLW29R-1C7BLF	SLW29S-1C7BLF	35.2	30.2
30	SLW30R-1C7BLF	SLW30S-1C7BLF	36.2	31.2

CAT. NO. SLW (n) R -1C7 B LF

SERIES NAME \_\_\_\_\_

NO. OF CONTACTS \_\_\_\_\_

R:RIGHT ANGLE TYPE \_\_\_\_\_

S:STRAIGHT TYPE \_\_\_\_\_

VARIATION \_\_\_\_\_

GOLD PLATING \_\_\_\_\_

LEAD FREE \_\_\_\_\_

NOTE

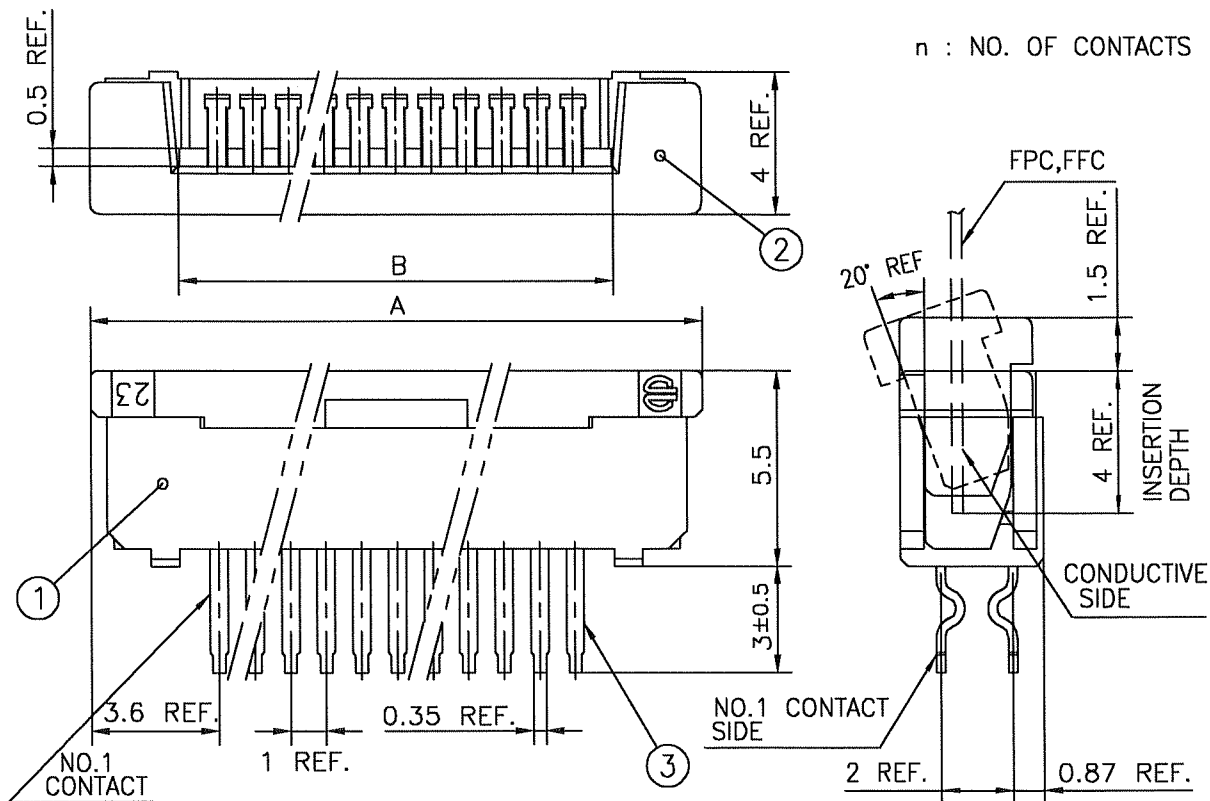
1. SEE PART DRAWINGS FOR DIMENSIONS A,B.

mat'l. code				surface ISO 1302 <input checked="" type="checkbox"/>	tolerance ISO 406 ISO 1101	projection 	product family 58JF/TF	CODE JP
ltr	ecn no	dr	date	tolerances unless otherwise specified			title CAT NO. TABLE FOR 1mm SPACING CONNECTOR (Cat. No. SLW__R/S-1C7BLF)	
A	J05-0079	H.T	2/18/05	angles	linear			
B	J06-0459	H.T	11/8/06			scale $\times$	dwg no JSA 96312	
				dr	11/8/06		sheet 1 of 1 size A4	
				enrg	11/8/06		type Product Customer Drawing	
				chr	11/9/06			
				appd	11/9/06			
sheet index	revision	B						Rev. B

SC-SLW05 JSA96313 96314 96315  
form: A4

1

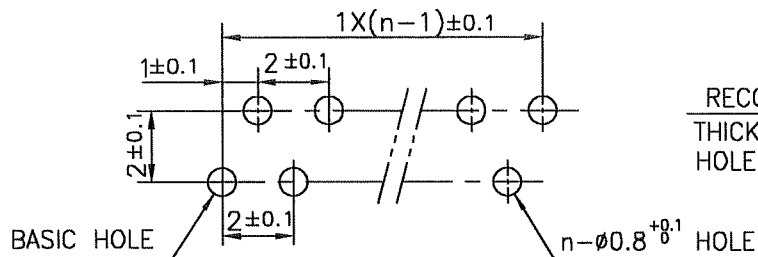
2



1. THIS PRODUCT MEETS EUROPEAN UNION DIRECTIVES AND OTHER COUNTRY REGULATIONS AS DESCRIBED IN GS-22-008

2. THE HOUSING WILL WITHSTAND EXPOSURE TO 260°C PEAK TEMPERATURE FOR 10 SECONDS IN A WAVE SOLDER APPLICATION WITH A 1.6mm THICK CIRCUIT BOARD.

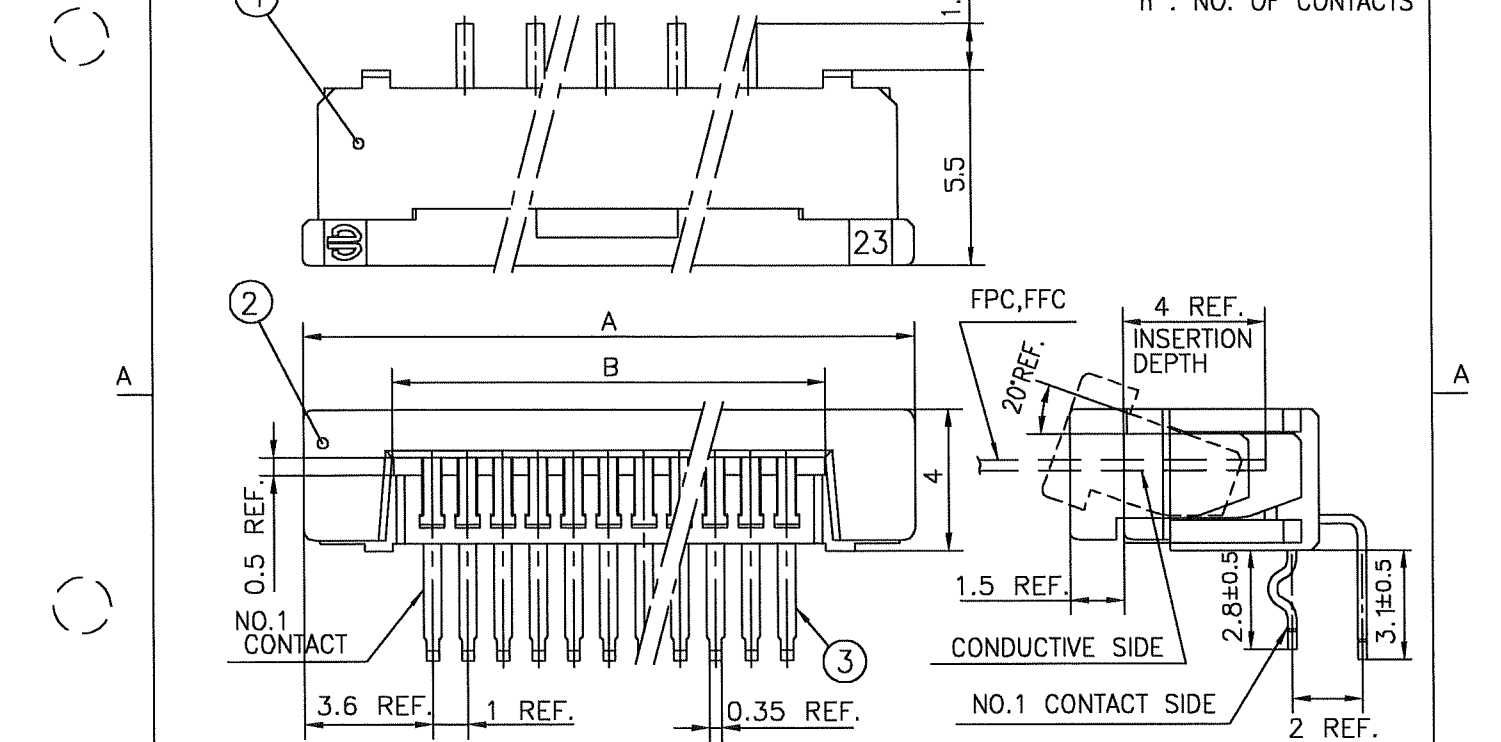
PT.NO.	PARTS NAME	MATERIAL	Q'TY	NOTE
1	HOUSING	NYLON RESIN GLASS REINFORCED (UL94V-0)	1	COLOR : BLACK
2	SLIDER		1	
3	CONTACT	PHOSPHOR BRONZE	n	PLATING :GOLD PLATING



RECOMMENDED PC BOARD THICKNESS : 0.8~1.6 HOLE PATTERN (COMPONENT SIDE)

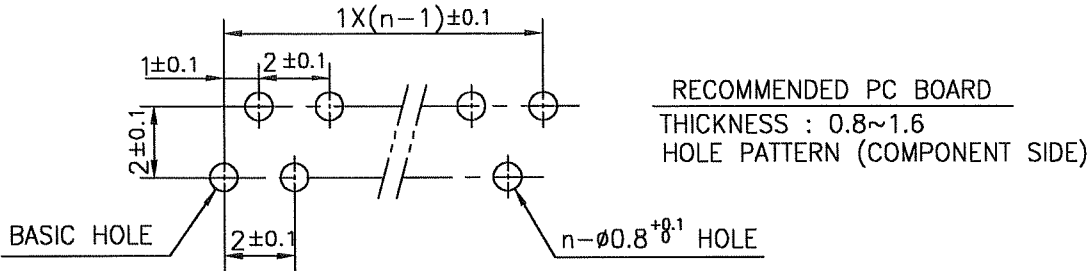
mat'l. code				surface ISO 1302 ✓		tolerance ISO 406 ISO 1101		projection		product family 58JF		CODE JP	
ltr	ecn no	dr	date	tolerances unless otherwise specified		angles linear		mm		title			
A	J05-0079	H.T	'05/2/18							1mm SPACING CONNECTOR (Cat. No. SLW__S-1C7BLF)			
B	J05-0734	H.T	10/28/'05										
C	J06-0459	H.T	11/8/'06										
				dr		11/8/06		scale		sheet 1 of 1 size			
				enr		11/8/06		FCJ		JSA 96313 A4			
				chr		11/9/06				type Product Customer Drawing			
				app		11/9/06							
sheet index		revision sheet		C		1						Rev. C	

SC-SLW03 JSA96312 form: A4



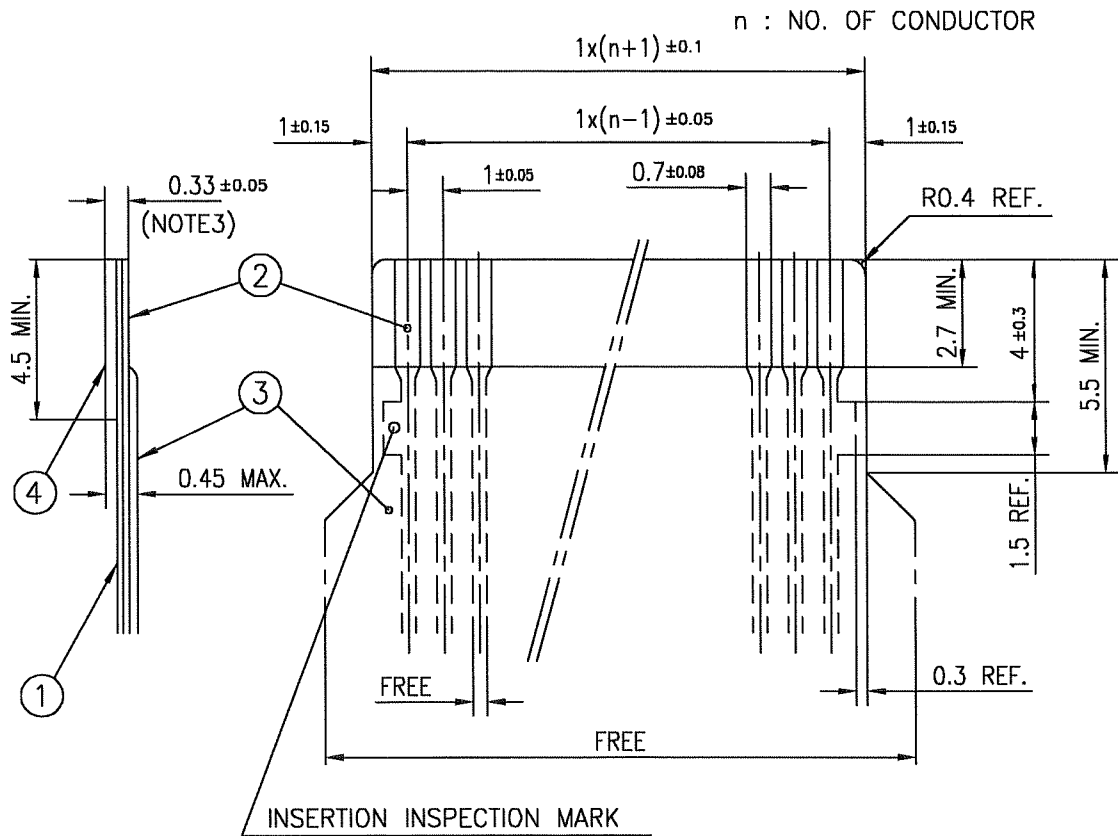
1. THIS PRODUCT MEETS EUROPEAN UNION DIRECTIVES AND OTHER COUNTRY REGULATIONS AS DESCRIBED IN GS-22-008
2. THE HOUSING WILL WITHSTAND EXPOSURE TO 260°C PEAK TEMPERATURE FOR 10 SECONDS IN A WAVE SOLDER APPLICATION WITH A 1.6mm THICK CIRCUIT BOARD.

PT.NO.	PARTS NAME	MATERIAL	Q'TY	NOTE
1	HOUSING	NYLON RESIN GLASS REINFORCED (UL94V-0)	1	COLOR : BLACK
2	SLIDER		1	
3	CONTACT	PHOSPHOR BRONZE	n	PLATING : GOLD PLATING



mat'l. code				surface ISO 1302 ✓		tolerance ISO 406 ISO 1101		projection		product family 58TF		CODE JP	
ltr				ecn no		dr		date		title			
A				J05-0079		H.T		'05/2/18		1mm SPACING CONNECTOR			
B				J05-0734		H.T		10/28/'05		(Cat. No. SLW__R-1C7BLF)			
C				J06-0459		H.T		11/8/'06					
										dwg no		sheet 1 of 1	
										JSA 96314		size A4	
										type		Product Customer Drawing	
sheet index				revision		C						Rev. C	
sheet				1									

# RECOMMENDED CABLE (FPC)



PT. NO.	PARTS NAME	MATERIAL	THICKNESS (μm)
1	BASE FILM	POLYIMIDE OR POLYESTER OR EQUAL	25
2	CONDUCTOR	COPPER FOIL(PLATING : GOLD 0.25μm MIN.)	35
3	OVERLAY	POLYIMIDE OR POLYESTER OR EQUAL	—
4	SUPPORTING TAPE	POLYESTER OR POLYIMIDE OR EQUAL	188

## NOTES

1. NO BURR AT EACH PORTION.
2. NO PEELING IN COMMON USE.
3. TOTAL THICKNESS LIMIT OF EACH MATERIAL (INCLUDING ADHESIVE AGENT) IS SPECIFIED.

mat'l. code				surface ISO 1302 ✓		tolerance ISO 406 ISO 1101		projection mm		product family 58JF/TF		CODE JP	
ltr	ecn no	dr	date	tolerances unless otherwise specified				mm		title RECOMMENDED CABLE (Cat. No. SLW__R/S-1C7BLF)			
A	J05-0079	H.T	'05/2/18	angles				mm		dwg no JSA 96315 sheet 1 of 1 size A4 type Product Customer Drawing			
B	J06-0459	H.T	11/8/06	linear				mm					
				dr		11/8/06							
				engr		11/8/06							
				chr		11/9/06							
				appd		11/9/06							
sheet index		revision sheet		B		1						Rev. B	

# Mouser Electronics

Authorized Distributor

Click to View Pricing, Inventory, Delivery & Lifecycle Information:

[FCI / Amphenol:](#)

[SLW10S-1C7BLF](#) [SLW14S-1C7BLF](#) [SLW15R-1C7BLF](#) [SLW15S-1C7BLF](#) [SLW20R-1C7BLF](#) [SLW4R-1C7BLF](#)  
[SLW4S-1C7BLF](#) [SLW7S-1C7BLF](#) [SLW9S-1C7BLF](#) [SLW17R-1C7BLF](#) [SLW20S-1C7BLF](#) [SLW11S-1C7BLF](#)