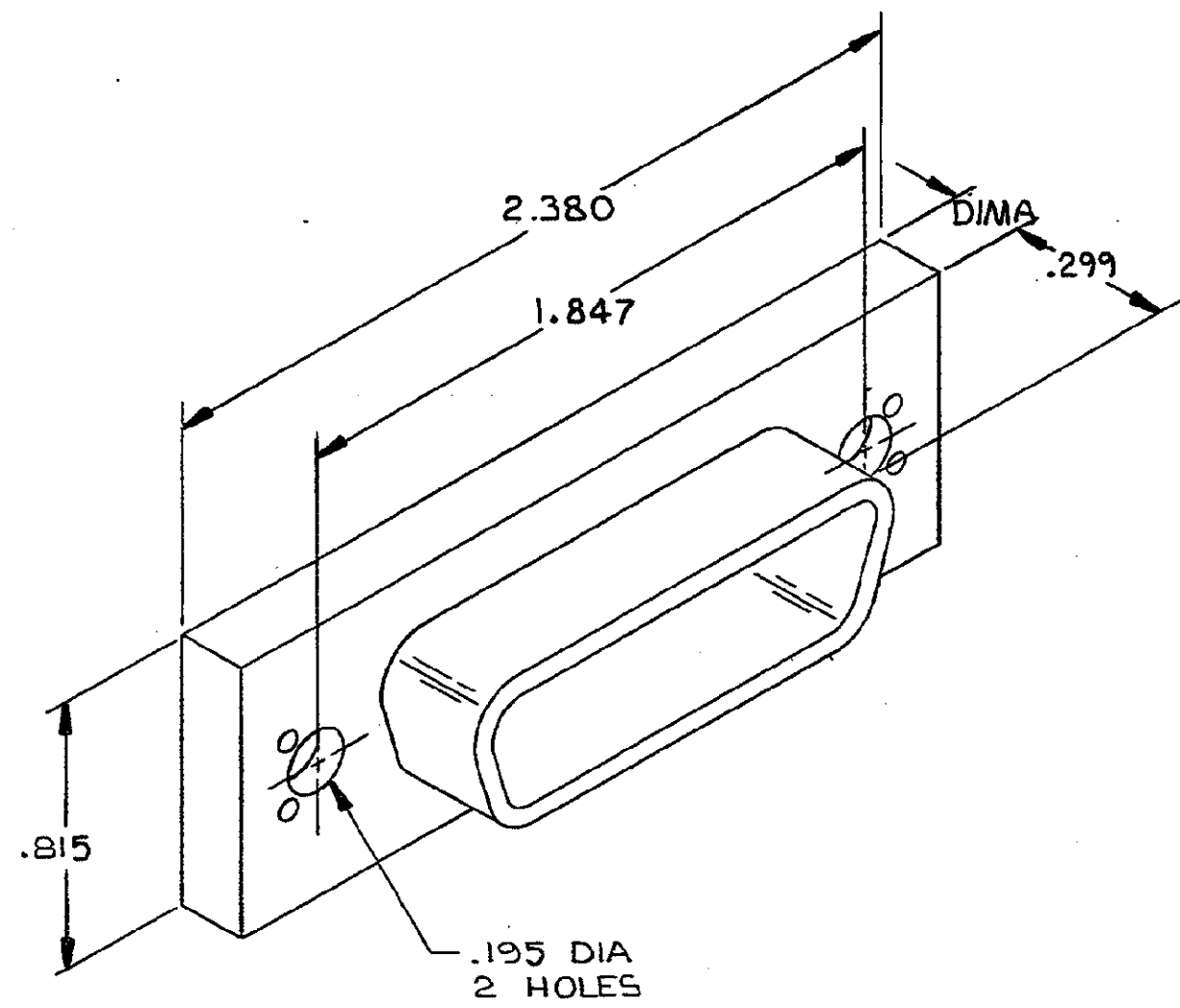


THIS DRAWING IS UNPUBLISHED. RELEASED FOR PUBLICATION . 19 .
© COPYRIGHT 19 BY AMP INCORPORATED, HARRISBURG, PA. ALL INTERNATIONAL RIGHTS RESERVED. AMP PRODUCTS MAY BE COVERED BY U.S. AND FOREIGN PATENTS AND/OR PATENTS PENDING.

REVISIONS					
P	F	ZONE	LTR	DESCRIPTION	DATE
D			D	REVISED PER ECN AA-2543	3-14-86



1. ALL DIMENSIONS SHOWN ARE MAXIMUM UNLESS OTHERWISE SPECIFIED.

553035

		.085	ZINC	REAR ONLY	553035-6
		.198		FRONT & REAR	553035-5
		DIM A	MATERIAL	TYPE MOUNTING	PART NO
UNLESS OTHERWISE SPECIFIED DIMENSIONS ARE IN INCHES. TOLERANCES ON: DECIMALS ± .001 ANGLES ± .1°		CONTRACT NO DR <i>L. Bowman</i> 12-31-81 CHK <i>MD</i> 1-13-82			
MATERIAL SEE TABLE		AMP INCORPORATED Harrisburg, Pa. 17105			
FINISH BRIGHT NICKEL PLATE		NAME SHIELD, EMI RECEPTACLE, PANEL MOUNTING, CHAMP			
		SIZE C	FSCM NO 00779	DRAWING NO 553035	
		SCALE 2/1		SHEET 1 OF 1	

Mouser Electronics

Authorized Distributor

Click to View Pricing, Inventory, Delivery & Lifecycle Information:

[TE Connectivity:](#)

[1-553035-9](#)