

DO NOT
SCALE FROM
THIS PRINT

MEC1-1XX-XX-XX-D-RAX-XX-SL-XX

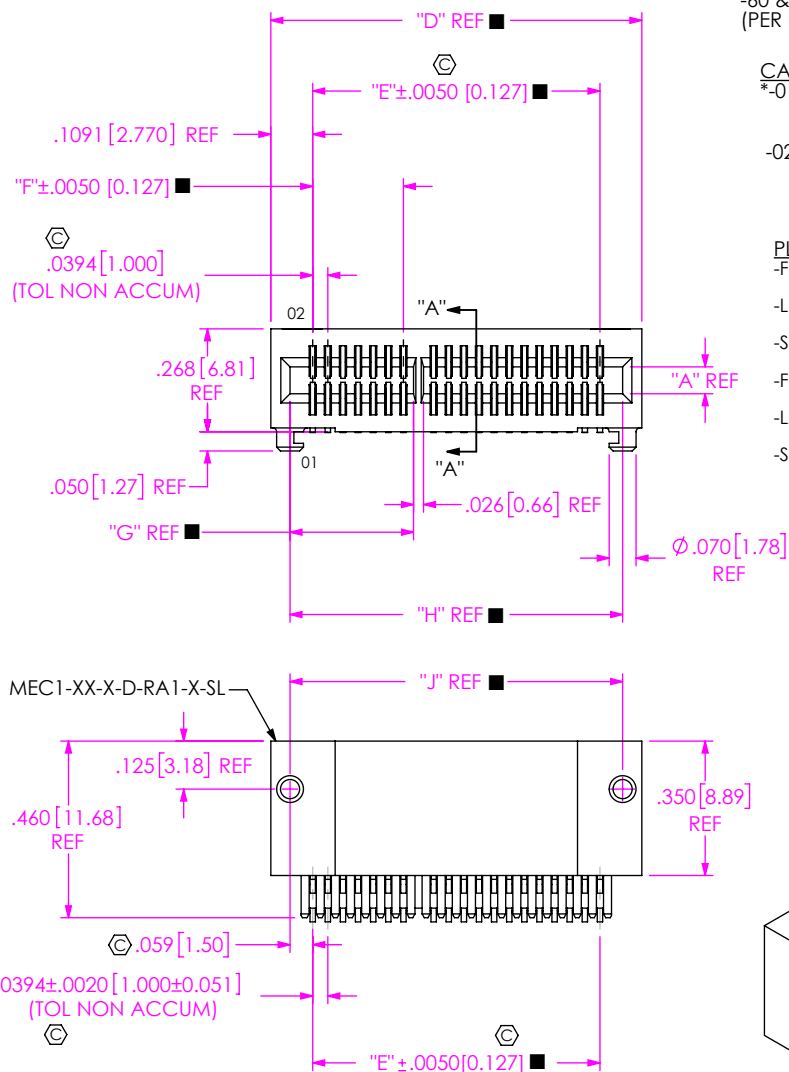


FIG 1
MEC1-120-02-XX-D-RA1-SL SHOWN
■= SEE TABLE 3, SHT 2

NO OF POSITIONS

-05, -08, -20, -30, -40, -50 (SEE FIG 1)
-60 & -70 (SEE FIG 2, SHT 3)
(PER ROW)

CARD THICKNESS

*-01: .031 THICK CARD
(USE MEC1-XX-T-D-RAX-X-SL)
(SEE NOTE 9)
-02: .062 THICK CARD
(USE MEC1-XX-S-D-RAX-X-SL)
(SEE NOTE 9)

PLATING

-F: 3μ" FLASH GOLD IN CONTACT AREA,
MATTE TIN ON TAIL
-L: 10μ" LIGHT GOLD IN CONTACT AREA,
MATTE TIN ON TAIL
-S: 30μ" SELECTIVE GOLD IN CONTACT AREA,
MATTE TIN ON TAIL
-FM: 3μ" FLASH GOLD IN CONTACT AREA,
MATTE ON TIN TAIL
-LM: 10μ" LIGHT IN CONTACT AREA,
MATTE TIN ON TAIL
-SM: 30μ" SELECTIVE GOLD IN CONTACT AREA,
MATTE TIN ON TAIL

ROW SPECIFICATION

-D: DOUBLE (USE MEC1-XX-X-D-RAX-X-SL)

PACKAGING

BLANK: TUBES (SEE NOTE 11)
-TR: TAPE & REEL (SEE NOTES 12 & 13)
(SUBSTITUTE -T FOR -TR:
DESIGNATION WHEN USING -XM
PLATING DESIGNATION WITH
BOTH -NP AND -SL OPTIONS)
-FR: FULL REEL QTY TAPE & REEL
(SEE NOTES 12 & 13)
(SUBSTITUTE -F FOR -FR:
DESIGNATION WHEN USING -XM
PLATING DESIGNATION WITH
BOTH -NP AND -SL OPTIONS)
(-T OR -TR, -F OR -FR OPTION NOT
AVAILABLE FOR 70 POS)

SOLDER LOCKS

NON-POLARIZED OPTION

-NP: NO POLARIZED POSITION
(ONLY AVAILABLE ON -05,
-08, -20, & -30 POSITIONS)
(SEE FIG 4, SHT 3)
-BLANK: BODY IS POLARIZED

TAIL OPTION

-RA1: STANDARD
-RA2: ELEVATED (SEE FIG 3, SHT 3)

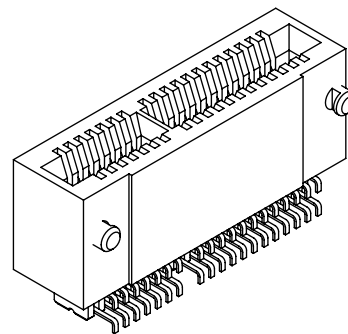
* = FOR EXISTING CUSTOMERS ONLY

TABLE 1

CARD	"A"	"B"	"C"
-01	.0400 [1.016]	.0161 [0.409]	.008 [0.20]
-02	.0700 [1.778]	.0298 [0.757]	.010 [0.25]

TABLE 2

POSITION	COPLANARITY	STRAIGHTNESS
-05, -08, -20, -30, -40	.0040 [0.102]	.004 [0.10]
-50, -60, -70	.0060 [0.152]	.006 [0.15]



- NOTES:
1. Ⓢ REPRESENTS A CRITICAL DIMENSION.
 2. MAXIMUM BURR ALLOWANCE: .004 [0.10]
 3. MINIMUM PUSHOUT FORCE: .5 LB
 4. TAIL OPTION -RA1 TO HAVE C-150-01-XX-X CONTACT FULLY PRE-FORMED.
 5. BODIES TO BE LAYER PACKAGED FOR TRANSIT BETWEEN INVENTORY AND PRODUCTION.
 6. TO BE MEASURED AT 2 MAIN 90° BENDS.
 7. MEASURE FIRST AND LAST PIN OF EACH ROW.
 8. NOTE DELETED.
 9. MATING EDGE CARD THICKNESS TOLERANCE TO BE ±10% OF NOMINAL FOR -01; ±7.5% FOR -02.
 10. NOTE DELETED.
 11. TUBES ARE STANDARD PACKAGING.
 12. ORDERS WILL BE PACKAGED ACCORDING TO THE SAMTEC PACKAGING EFFICIENCY STANDARDS (SPES) FOUND ON WWW.SAMTEC.COM.
 13. ATTACH LABEL TO EACH REEL.

UNLESS OTHERWISE SPECIFIED,
DIMENSIONS ARE IN INCHES.

TOLERANCES ARE:

DECIMALS ANGLES
.XX: ±.01 [0.3] 2°
.XXX: ±.005 [0.13]
.XXXX: ±.0020 [0.051]

PROPRIETARY NOTE

THIS DOCUMENT CONTAINS CONFIDENTIAL AND
PROPRIETARY INFORMATION AND ALL DESIGN,
MANUFACTURING, REPRODUCTION, USE, PATENT RIGHTS
AND SALES RIGHTS ARE EXPRESSLY RESERVED BY SAMTEC,
INC. THIS DOCUMENT SHALL NOT BE DISCLOSED, IN WHOLE
OR PART, TO ANY UNAUTHORIZED PERSON OR ENTITY NOR
REPRODUCED, TRANSFERRED OR INCORPORATED IN ANY
OTHER PROJECT IN ANY MANNER WITHOUT THE EXPRESS
WRITTEN CONSENT OF SAMTEC, INC.

MATERIAL: DO NOT SCALE DRAWING
FLAMMABILITY RATING: UL 94V-0

INSULATOR: LCP
-01: COLOR: NATURAL
-02: COLOR: BLACK
CONTACT: PHOS BRONZE

SHEET SCALE: 2:1

DESCRIPTION:

samtec

520 PARK EAST BLVD, NEW ALBANY, IN 47150
PHONE: 812-944-6733 FAX: 812-948-5047
e-Mail: info@SAMTEC.com code: 55322

1mm MEC1 -RA ASSEMBLY
DWG. NO.
MEC1-1XX-XX-XX-D-RAX-XX-SL-XX

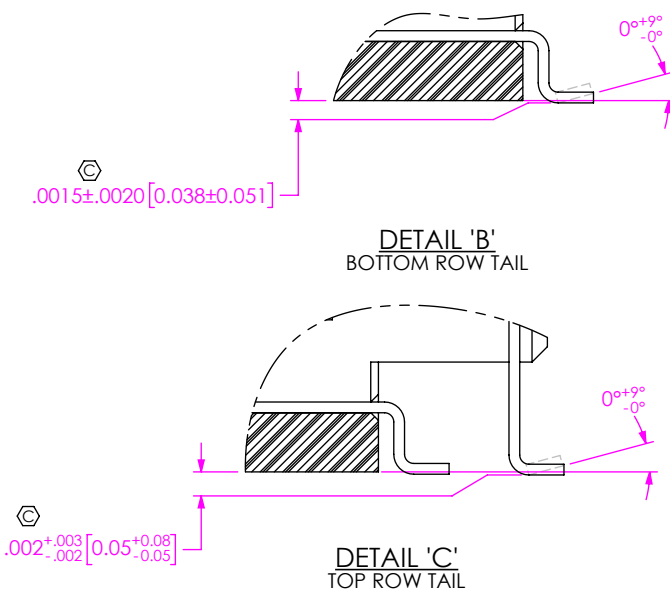
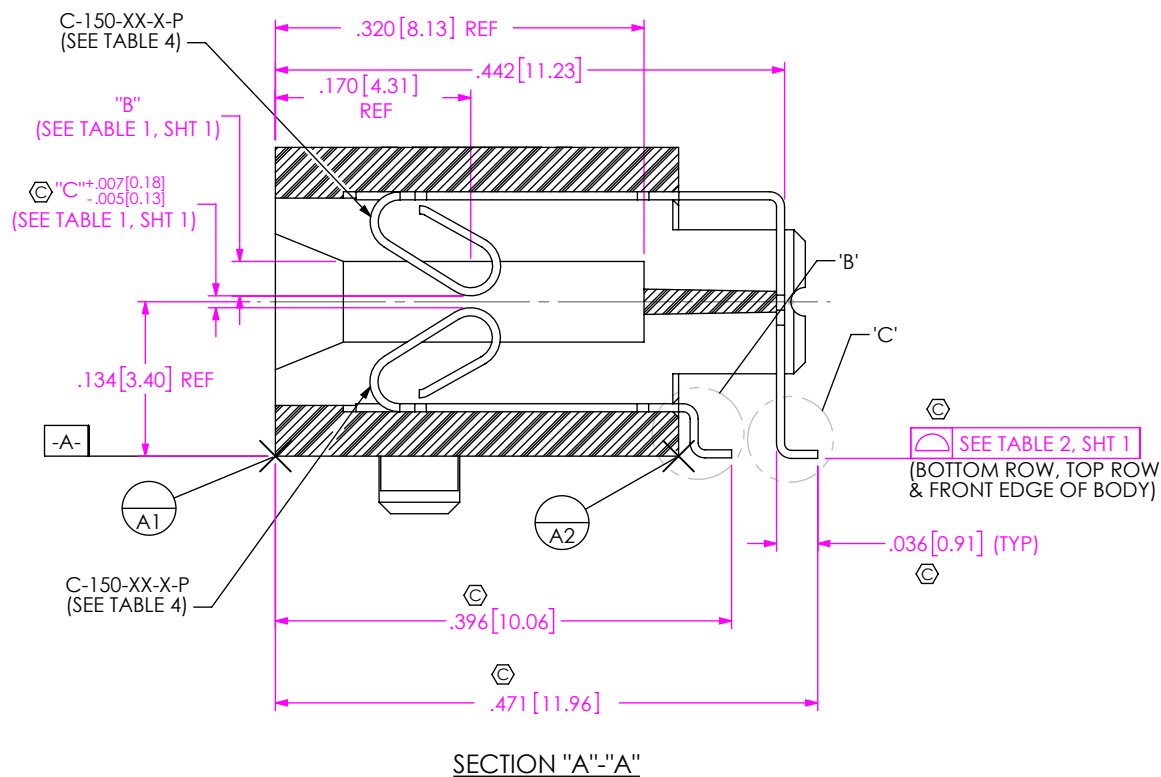
BY: MARKS 01/25/00 SHEET 1 OF 5

TABLE 3

No OF POSITIONS	POLARIZED POSITIONS	"D"	"E"	"F"	"G"	"H"	"J"
-05	3 & 4	.3756 [9.540]	.1575 [4.000]	N/A	.0854 [2.169]	.275 [6.99]	.2756 [7.000]
-08	5 & 6	.4937 [12.540]	.2756 [7.000]	.0394 [1.001]	.1248 [3.170]	.394 [10.01]	.3937 [10.000]
-20	15 & 16	.9661 [24.540]	.7480 [19.000]	.2362 [5.999]	.3216 [8.169]	.866 [22.00]	.8661 [22.000]
-30	21 & 22	1.3598 [34.540]	1.1417 [29.000]	.3543 [8.999]	.4398 [11.171]	1.260 [32.00]	1.2598 [32.000]
-40	31 & 32	1.7535 [44.540]	1.5354 [39.000]	.5512 [14.000]	.6366 [16.170]	1.654 [42.01]	1.6535 [42.000]
-50	41 & 42	2.1472 [54.540]	1.9291 [49.000]	.7480 [18.999]	.8334 [21.168]	2.047 [51.99]	2.0472 [52.000]
-60	31 & 32, 63 & 64	2.5409 [64.540]	2.3228 [59.000]	.5512 [14.000]	.6366 [16.170]	2.441 [62.00]	2.4409 [62.000]
-70	53 & 54, 115 & 116	2.9346 [74.540]	2.7165 [69.000]	.9843 [25.001]	1.0696 [27.168]	2.835 [72.01]	2.8346 [71.999]

TABLE 4

CARD THICKNESS	TAIL OPTION	BOTTOM ROW	TOP ROW
-01	-RA1	C-150-11-X-P	C-150-14-X-P
-01	-RA2	C-150-15-X-P	C-150-16-X-P
-02	-RA1	C-150-01-X-P	C-150-04-X-P
-02	-RA2	C-150-05-X-P	C-150-06-X-P



* PROPRIETARY NOTE *

THIS DOCUMENT CONTAINS CONFIDENTIAL AND PROPRIETARY INFORMATION AND ALL DESIGN, MANUFACTURING, REPRODUCTION, USE, PATENT RIGHTS AND SALES RIGHTS ARE EXPRESSLY RESERVED BY SAMTEC, INC. THIS DOCUMENT SHALL NOT BE DISCLOSED, IN WHOLE OR PART, TO ANY UNAUTHORIZED PERSON OR ENTITY NOR REPRODUCED, TRANSFERRED OR INCORPORATED IN ANY OTHER PROJECT IN ANY MANNER WITHOUT THE EXPRESS WRITTEN CONSENT OF SAMTEC, INC.

DO NOT SCALE DRAWING

SHEET SCALE: 2:1

samtec

520 PARK EAST BLVD, NEW ALBANY, IN 47150
PHONE: 812-944-6733 FAX: 812-948-5047
e-Mail: info@SAMTEC.com code: 55322

DESCRIPTION:

1mm MEC1 -RA ASSEMBLY

DWG. NO.

MEC1-1XX-XX-XX-D-RAX-XX-SL-XX

BY: MARKS

01/25/00

SHEET 2 OF 5

TABLE 5		
No OF POSITION	"K"	"L"
-60	.5512 [14.000]	.604 [15.34]
-70	1.1417 [28.999]	1.196 [30.37]

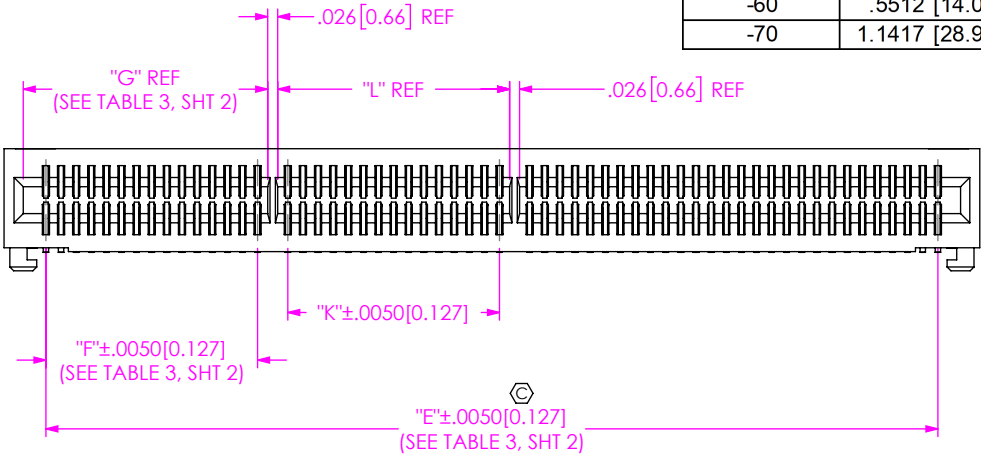


FIG 2
MEC1-160-02-XX-D-RA1-SL SHOWN
(-60 & -70 POSITION ONLY)
(DIFFERENT AS SHOWN, OTHERWISE SAME AS FIG 1)



FIG 4
MEC1-120-02-XX-D-RA1-NP-SL SHOWN
(DIFFERENT AS SHOWN, OTHERWISE SAME AS FIG 1)

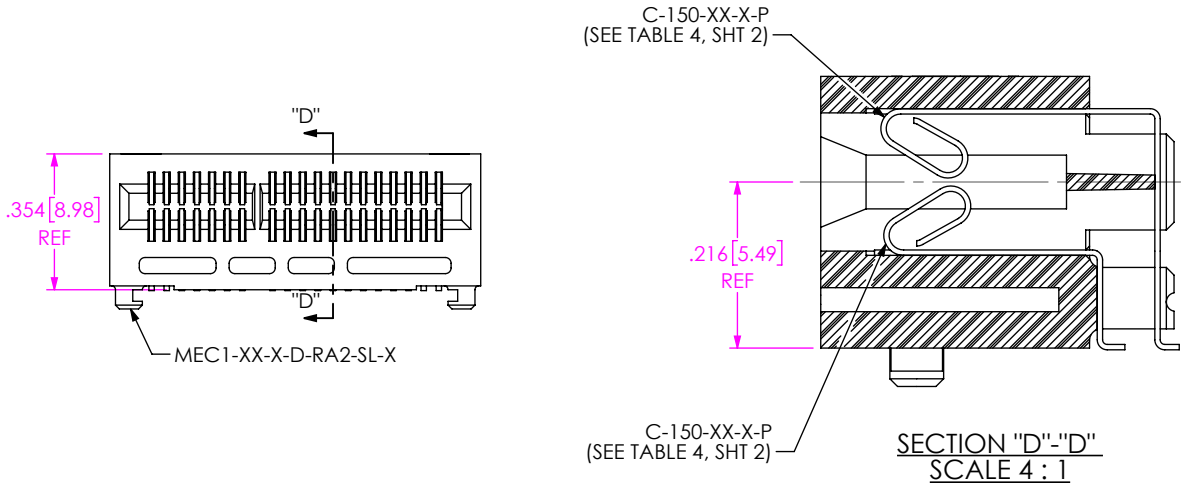
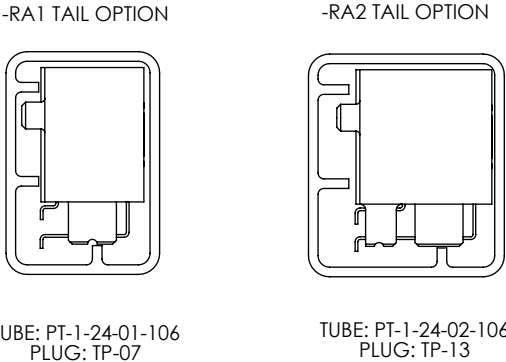


FIG 3
MEC1-120-02-XX-D-RA2-SL SHOWN
(DIFFERENT AS SHOWN, OTHERWISE SAME AS FIG 1)

PACKAGING VIEW



PROPRIETARY NOTE
THIS DOCUMENT CONTAINS CONFIDENTIAL AND PROPRIETARY INFORMATION AND ALL DESIGN, MANUFACTURING, REPRODUCTION, USE, PATENT RIGHTS AND SALES RIGHTS ARE EXPRESSLY RESERVED BY SAMTEC, INC. THIS DOCUMENT SHALL NOT BE DISCLOSED, IN WHOLE OR PART, TO ANY UNAUTHORIZED PERSON OR ENTITY NOR REPRODUCED, TRANSFERRED OR INCORPORATED IN ANY OTHER PROJECT IN ANY MANNER WITHOUT THE EXPRESS WRITTEN CONSENT OF SAMTEC, INC.

DO NOT SCALE DRAWING

SHEET SCALE: 2:1



520 PARK EAST BLVD, NEW ALBANY, IN 47150
PHONE: 812-944-6733 FAX: 812-948-5047
e-Mail: info@SAMTEC.com code: 55322

DESCRIPTION:
1mm MEC1 -RA ASSEMBLY
DWG. NO.
MEC1-1XX-XX-XX-D-RAX-XX-SL-XX
BY: MARKS 01/25/00 SHEET 3 OF 5

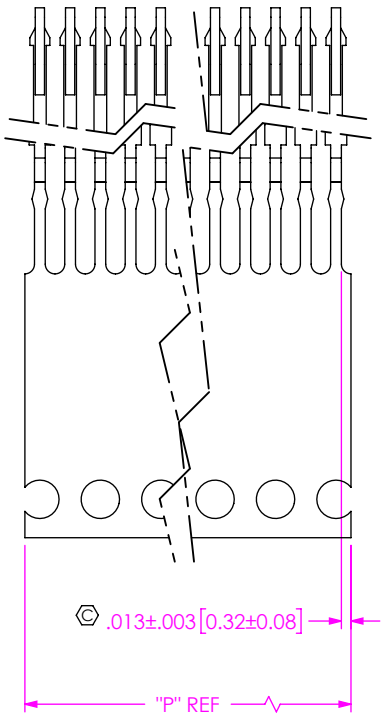
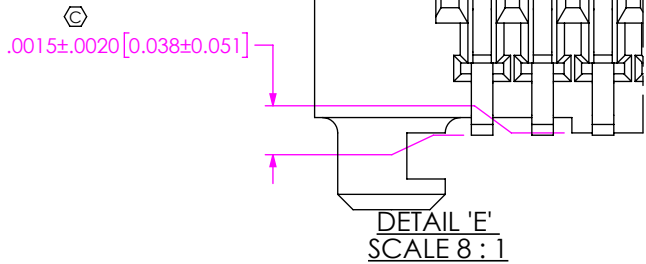
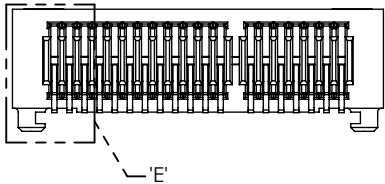
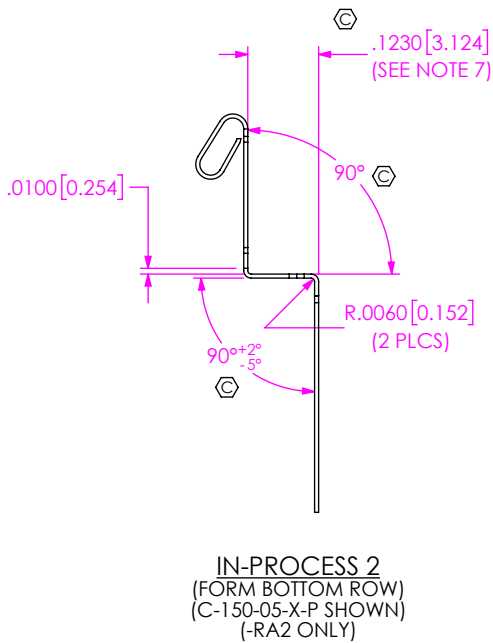


TABLE 6		
No OF POSITIONS	"P"	
-05	.197	[5.00]
-08	.315	[8.00]
-20	.787	[20.00]
-30	1.181	[30.00]
-40	1.575	[40.00]
-50	1.969	[50.00]
-60	2.362	[60.00]
-70	2.756	[70.00]

IN-PROCESS 1 & 5
(COMB CUT CONTACT)



DETAIL 'E'
SCALE 8 : 1

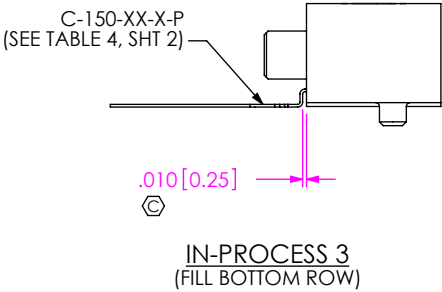
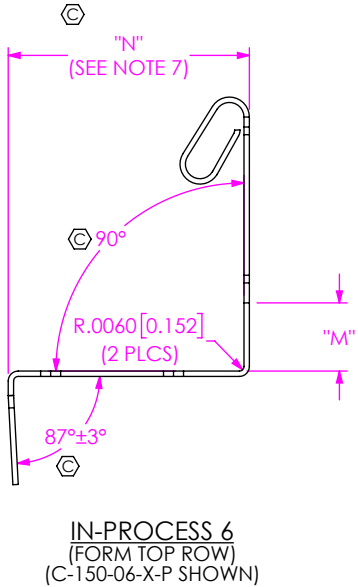


TABLE 7		
TAIL OPTION	"N"	"M"
-RA1	.2295 [5.829]	.085 [2.16]
-RA2	.3140 [7.976]	.089 [2.26]



PROPRIETARY NOTE
THIS DOCUMENT CONTAINS CONFIDENTIAL AND PROPRIETARY INFORMATION AND ALL DESIGN, MANUFACTURING, REPRODUCTION, USE, PATENT RIGHTS AND SALES RIGHTS ARE EXPRESSLY RESERVED BY SAMTEC, INC. THIS DOCUMENT SHALL NOT BE DISCLOSED, IN WHOLE OR PART, TO ANY UNAUTHORIZED PERSON OR ENTITY NOR REPRODUCED, TRANSFERRED OR INCORPORATED IN ANY OTHER PROJECT IN ANY MANNER WITHOUT THE EXPRESS WRITTEN CONSENT OF SAMTEC, INC.

DO NOT SCALE DRAWING

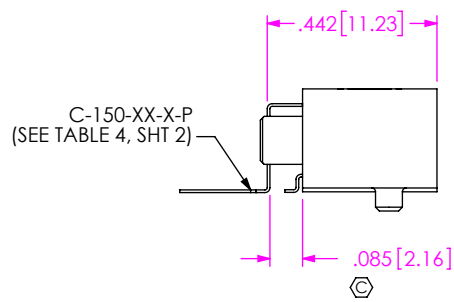
SHEET SCALE: 4:1

samtec
520 PARK EAST BLVD, NEW ALBANY, IN 47150
PHONE: 812-944-6733 FAX: 812-948-5047
e-Mail: info@SAMTEC.com code: 55322

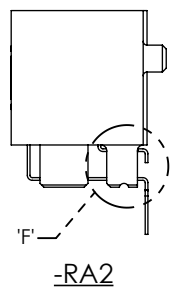
DESCRIPTION:
1mm MEC1 -RA ASSEMBLY

DWG. NO.
MEC1-1XX-XX-XX-D-RAX-XX-SL-XX

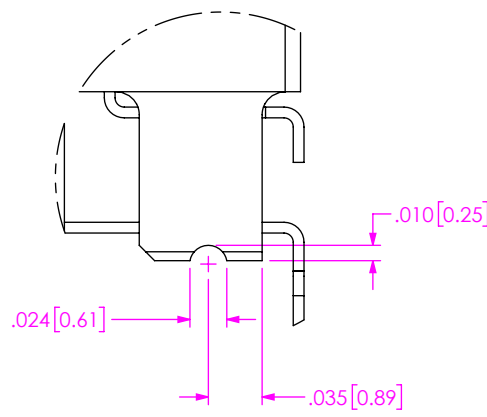
BY: MARKS 01/25/00 SHEET 4 OF 5



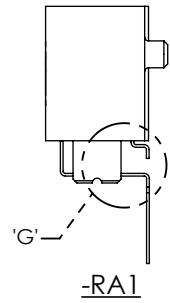
IN-PROCESS 7
(FILL TOP ROW)



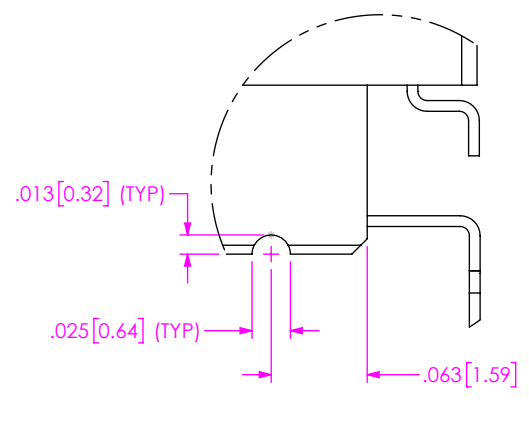
DETAIL 'F'
SCALE 8 : 1



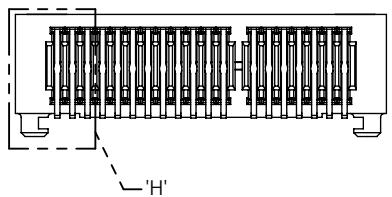
DETAIL 'F'
SCALE 8 : 1



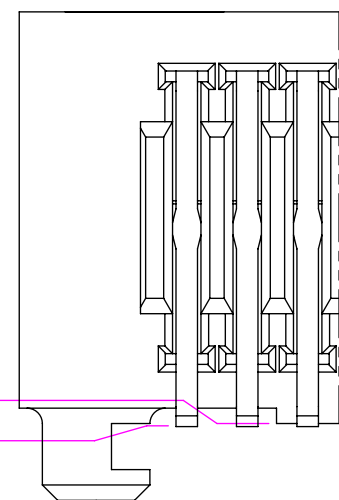
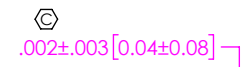
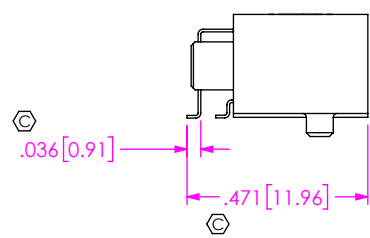
DETAIL 'G'
SCALE 8 : 1



DETAIL 'G'
SCALE 8 : 1



IN-PROCESS 9
(SHEAR TOP ROW)



DETAIL 'H'
SCALE 8 : 1

<p>PROPRIETARY NOTE</p> <p>THIS DOCUMENT CONTAINS CONFIDENTIAL AND PROPRIETARY INFORMATION AND ALL DESIGN, MANUFACTURING, REPRODUCTION, USE, PATENT RIGHTS AND SALES RIGHTS ARE EXPRESSLY RESERVED BY SAMTEC, INC. THIS DOCUMENT SHALL NOT BE DISCLOSED, IN WHOLE OR PART, TO ANY UNAUTHORIZED PERSON OR ENTITY NOR REPRODUCED, TRANSFERRED OR INCORPORATED IN ANY OTHER PROJECT IN ANY MANNER WITHOUT THE EXPRESS WRITTEN CONSENT OF SAMTEC, INC.</p> <p>DO NOT SCALE DRAWING</p> <p>SHEET SCALE: 2:1</p>		
	520 PARK EAST BLVD, NEW ALBANY, IN 47150 PHONE: 812-944-6733 FAX: 812-948-5047 e-Mail: info@SAMTEC.com code: 55322	
	DESCRIPTION: 1mm MEC1 -RA ASSEMBLY	
	DWG. NO. MEC1-1XX-XX-XX-D-RAX-XX-SL-XX	
BY: MARKS	01/25/00	SHEET 5 OF 5