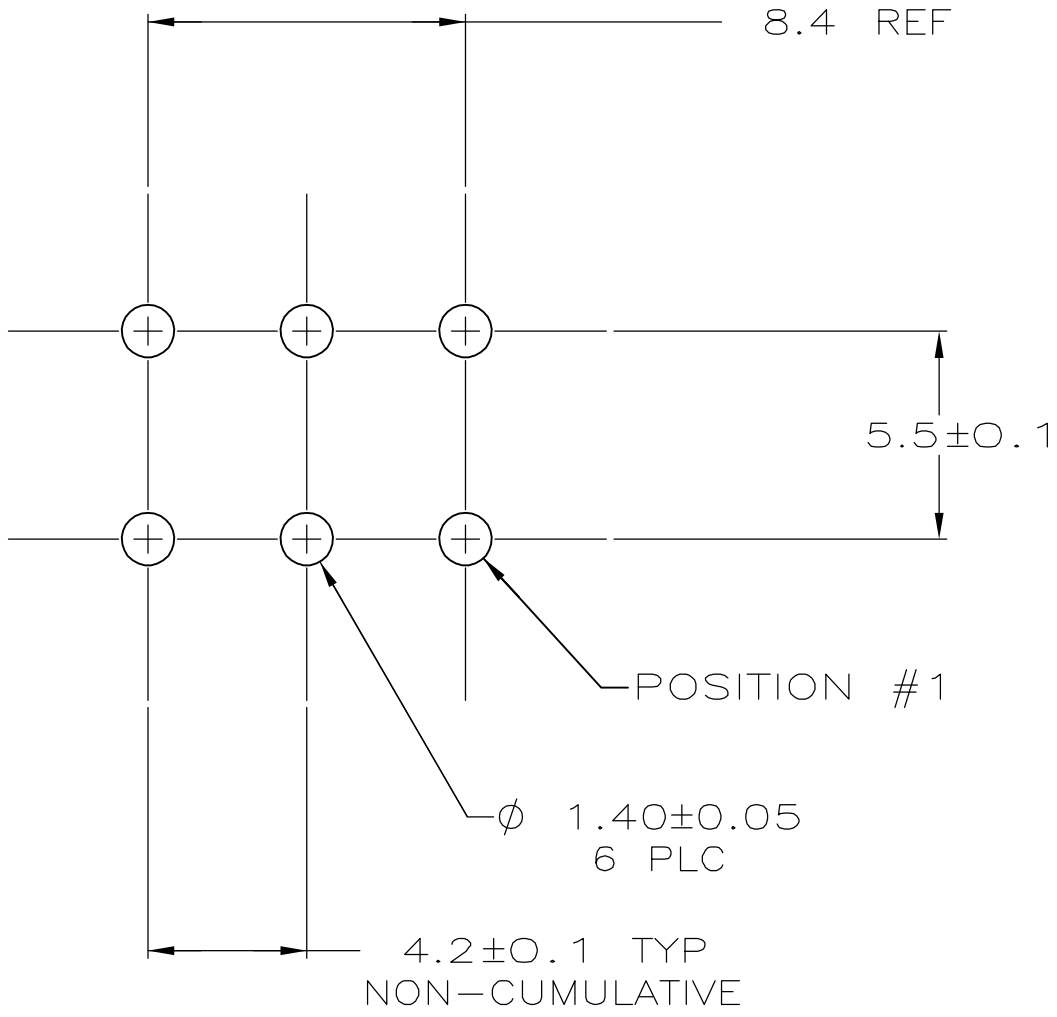
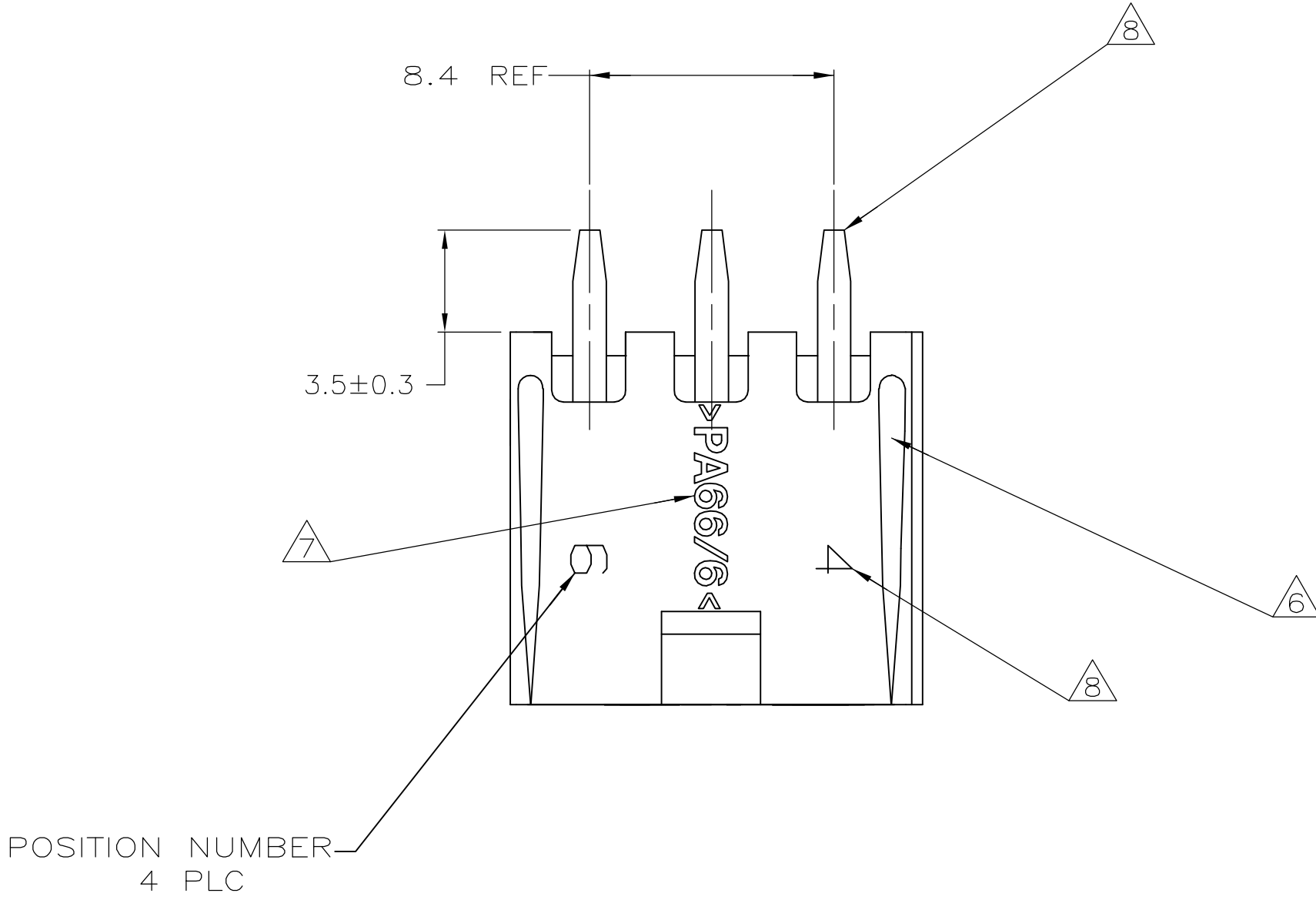
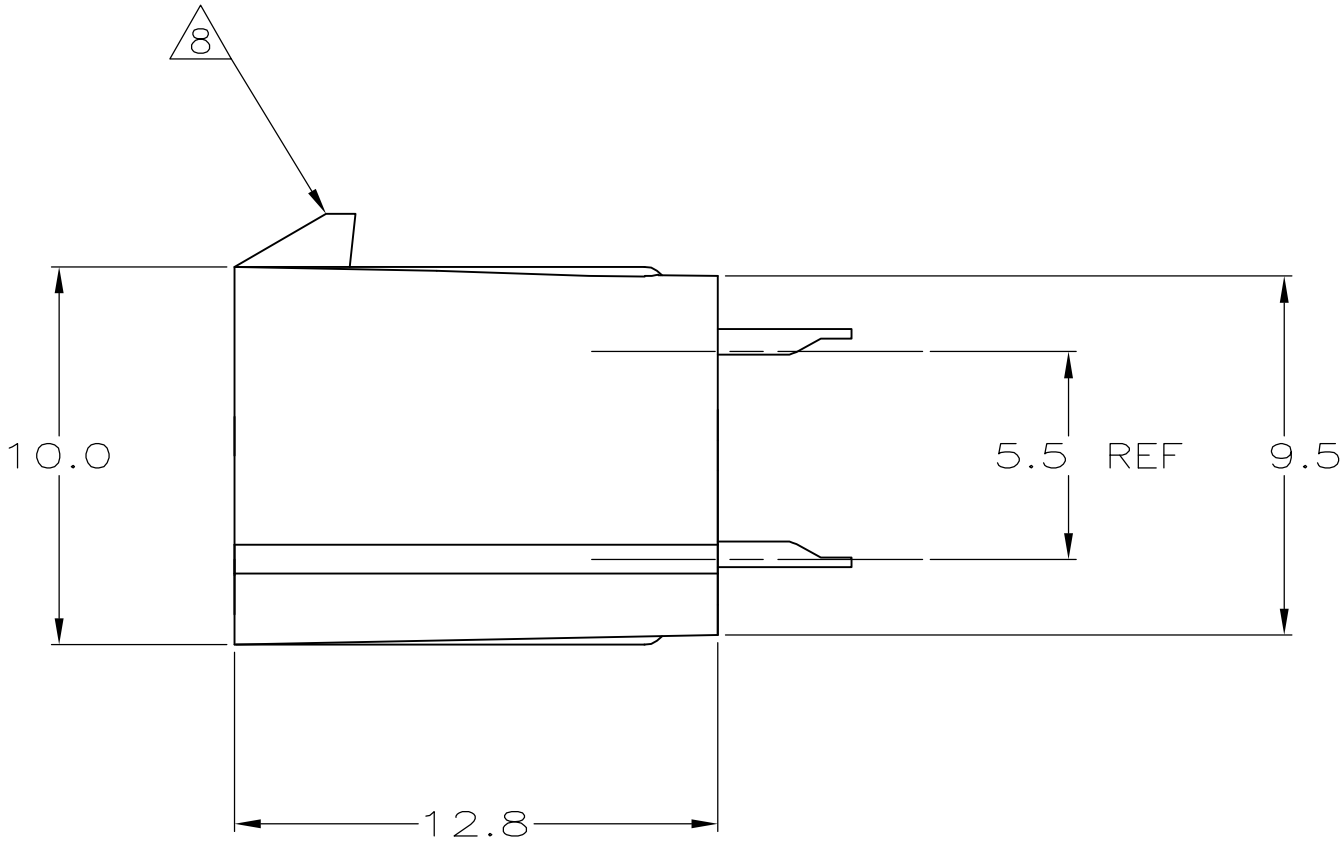
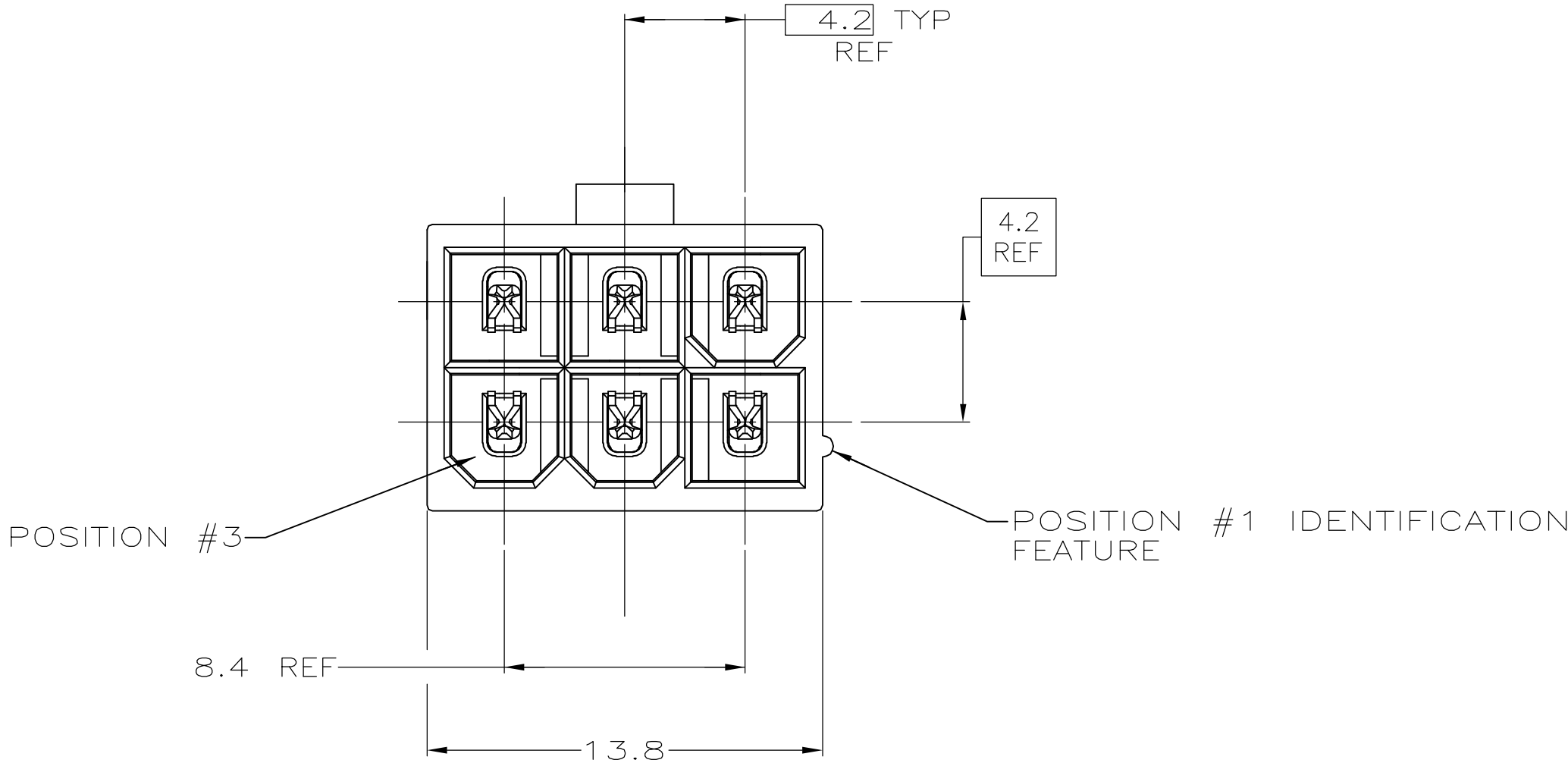


LOC	DIST	REVISIONS					
		P	LTR	DESCRIPTION	DATE	DWN	APVD
CM	0						
			D	REVISED PER ECO-06-014732	11NOV06	KW	DC

- ⚠ MATERIAL:
HOUSING: NYLON, UL94V-0 (COLOR - NATURAL, COLOR OF PARTS MAY VARY).
CONTACTS - 0.25 THK COPPER ALLOY.
- ⚠ CONTACT FINISH: 0.003 MIN THK TIN-LEAD OVER 0.00127 MIN THK NICKEL OVER ENTIRE CONTACT.
- ⚠ CONTACT FINISH: 0.00076 MIN THK GOLD PLATE ON PIN MATING SURFACE, 0.003 MIN THK TIN-LEAD PLATE ON SOLDER TAIL, ALL OVER 0.00127 MIN THK NICKEL BASE PLATE.
4. SOLDER TAIL MEETS AMP SOLDERABILITY SPECIFICATION 109-11-2.
5. MATES WITH SIMILARLY PLATED AMP-DUAC™ POWER CONNECTOR RECEPTACLE HOUSINGS/SOCKET CONTACTS.
- ⚠ RIBS ON FOUR CORNERS OPTIONAL.
- ⚠ AMP LOGO AND MATERIAL ID MAY BE LOCATED ON EITHER LONG SIDE OF PART.
- ⚠ SIZE, SHAPE OR STYLE OF THIS FEATURE MAY VARY.
- ⚠ CONTACT FINISH: 0.003 MIN THK TIN OVER 0.00127 MIN THK NICKEL OVER ENTIRE CONTACT.
- ⚠ CONTACT FINISH: 0.00076 MIN THK GOLD PLATE ON PIN MATING SURFACE, 0.003 MIN THK TIN PLATE ON SOLDER TAIL, ALL OVER 0.00127 MIN THK NICKEL BASE PLATE.



RECOMMENDED MOUNTING HOLE PATTERN
FOR 1.78 MAX THICK P.C. BOARD
COMPONENT SIDE SHOWN



SUPERSEDED BY 1-794485-2
SUPERSEDED BY 1-794485-1

⚠1	⚠10	⚠1	⚠1	1-794485-2
⚠1	⚠9	⚠1	⚠1	1-794485-1
⚠1	⚠3	⚠1	⚠1	794485-2
⚠1	⚠2	⚠1	⚠1	794485-1

MATERIAL		FINISH		MATERIAL		COLOR		PART NO	
CONTACT				HOUSING					
THIS DRAWING IS A CONTROLLED DOCUMENT.				DIN R VESTAL 6-11-98		tyco Tyco Electronics Corporation Harrisburg, Pa 17105-3608 Electronics			
DIMENSIONS:		TOLERANCES UNLESS OTHERWISE SPECIFIED:		CHK R SWING 6-11-98					
mm				APVD C CASH 6-11-98		NAME			

METRIC

Mouser Electronics

Authorized Distributor

Click to View Pricing, Inventory, Delivery & Lifecycle Information:

[TE Connectivity:](#)

[1-794485-2](#)