
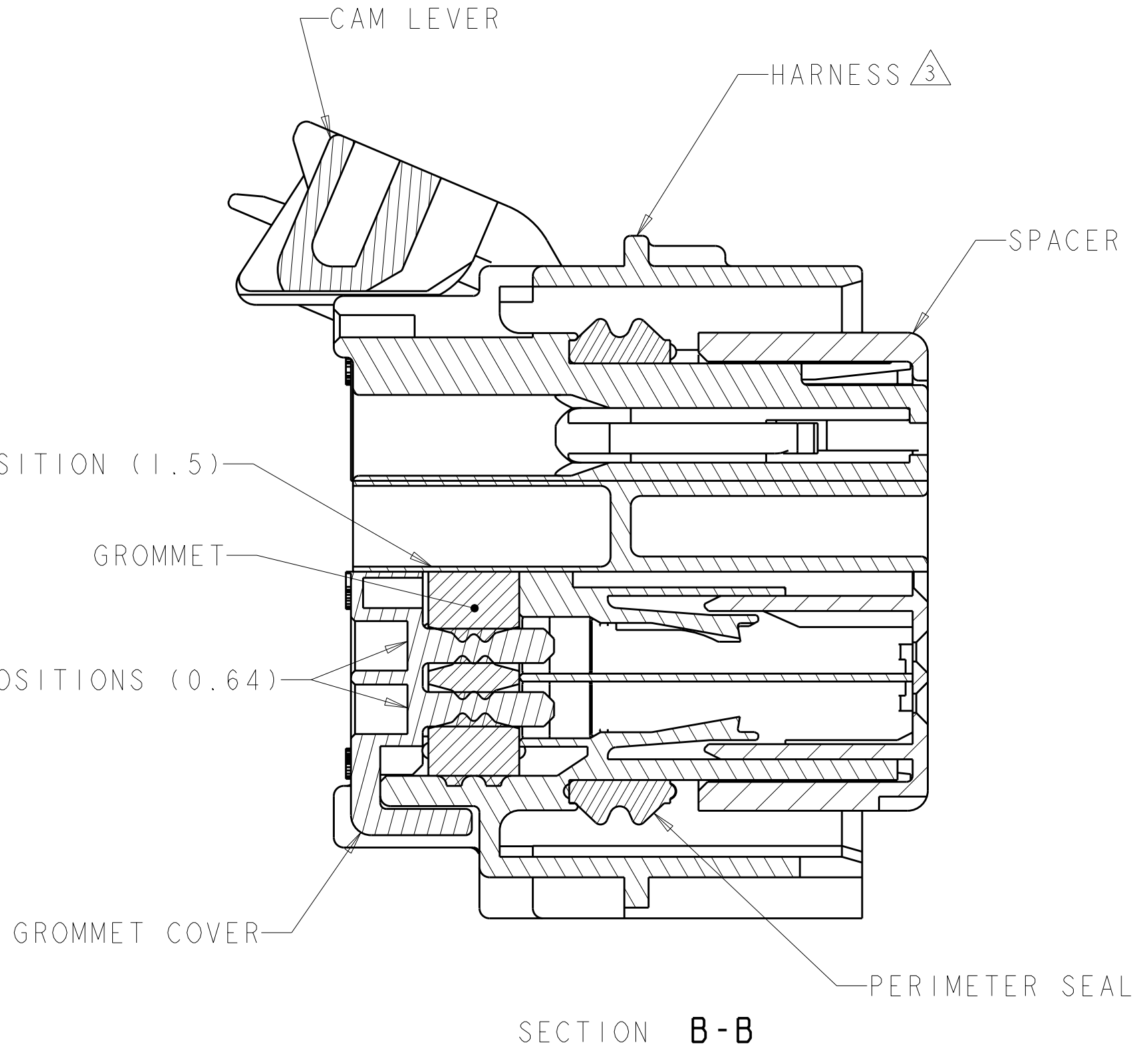
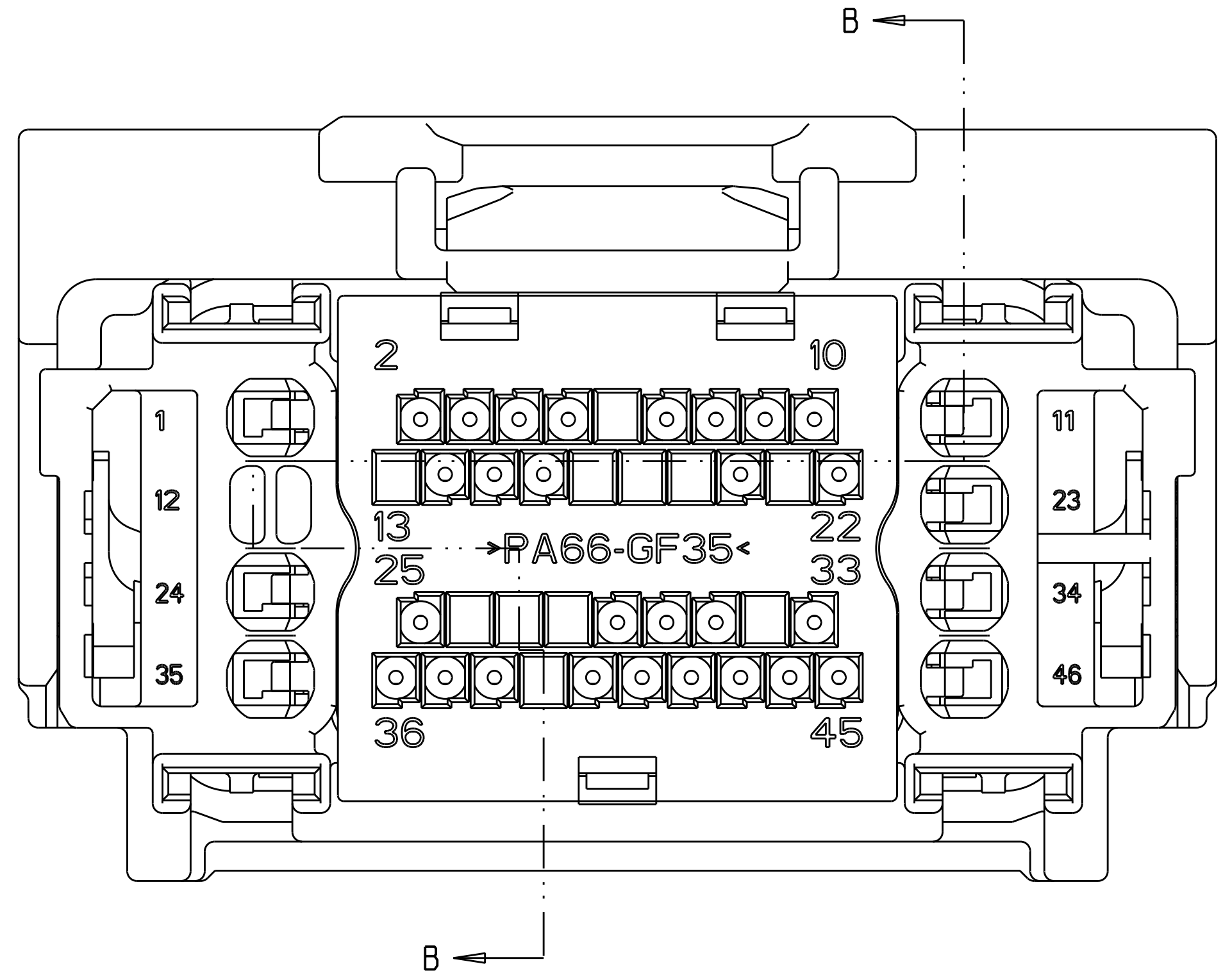


KEYING OPTION "B"  
1438082-2 




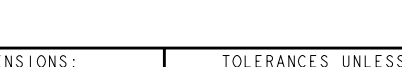
△ MATERIAL:  
HARNES - 35% GLASS FILLED PA66, BLACK  
ALT MAT'L: HARNES - 30% GLASS FILLED sPS, BLACK  
SPACER - 40% GLASS FILLED PPS+PA66, RED  
ALT MAT'L: 30% GLASS FILLED sPS, RED  
ALT MAT'L: 35% GLASS FILLED PA66, RED  
COVER - 35% GLASS FILLED PA66, BLACK  
ALT MAT'L: COVER - 30% GLASS FILLED LCP, BLACK  
CAM LEVER - 35% GLASS FILLED NYLON, GRAY  
GROMMET - SILICONE, BROWN  
PERIMETER SEAL - SILICONE, GREEN

2. CAM LEVER AND SPACER ARE SHIPPED IN PRE-LATCH POSITION.

③ SEE PINOUT CHART ON SHEETS 2, 3 AND 4 FOR CLOSED CIRCUIT CONFIGURATIONS.

④ CAVITIES WITH A NUMERIC SYMBOL INDICATES CLOSED TERMINAL LOCATIONS.  
BLANK CAVITIES INDICATE OPEN TERMINAL HOLE LOCATIONS.

SHOWN WITH CAM LEVER AND SPACER  
IN LOADED POSITION WITH  
OPTIONAL WIRESHIELD

<small>THIS DRAWING IS A CONTROLLED DOCUMENT FOR Tyco Electronics Corporation          IT IS SUBJECT TO A CHANGE ORDER AND THE CREATING ORGANIZATION          SHOULD BE CONTACTED FOR THE LATEST REVISION.</small>		DWN: 01AUG2003 R. VESTAL ECH: 01AUG2003 D. STRAUSSER APVD: 01AUG2003 D. STRAUSSER		 Tyco Electronics Harrisburg, PA 17105-3608	
DIMENSIONS: mm		TOLERANCES UNLESS OTHERWISE SPECIFIED:		NAME:	
		0 PLC ±. 1 PLC ±0.3 2 PLC ±0.10 3 PLC ±. 4 PLC ±. ANGLES ±°		PRODUCT SPEC: - APPLICATION SPEC: -	
MATERIAL: SEE TABLE		FINISH: SEE TABLE		46 Way PCM CONNECTOR HARNESS ASSEMBLY	
		WEIGHT: -		SIZE: CAGE CODE: DRAWING NO: RESTRICTED TO:	
		A   00779   C = 1438082		-	
CUSTOMER DRAWING				SCALE: 4:1 SHEET 1 OF 5 REV: 1	

LOC	DIST	REVISIONS			
FX	00	P	LYR	DESCRIPTION	DATE
		-	-	SEE SHEET 1	-

45	43			39	37	36	35			31					24					18	17	16		14	13	12			9		7	6				2	1	9-1438082-7	2LIT-14A464-SD-051		
		42																	20	18			15	14			11	10		8	7			4	3	2	1	9-1438082-6	2LIT-14A464-SD-050		
		42																	20	18							11	10									1	9-1438082-5	2LIT-14A464-SD-049		
		42																	20	18							11	10									2	1	9-1438082-4	2LIT-14A464-SD-048	
							35						27																										9-1438082-3	2LIT-14A464-SD-047	
	45	43				36	35			32	31				24		21		19	18	17	16		14	12						7	6					1	9-1438082-1	2LIT-14A464-SD-046		
46										31																													9-1438082-0	2LIT-14A464-SD-045	
										31					24							16									8					3	2		8-1438082-9	2LIT-14A464-SD-044	
													27																										8-1438082-8	2LIT-14A464-SD-043	
	45	44	43	42		40		38	37	36		33	31	29		24	22	20		18	17	16	15							9	8				3			8-1438082-7	2LIT-14A464-SD-042		
	45	44	43	42		40		38	37	36		33	31	29		24	22	21	20	19	18	17	16	15						9	8		6			2		8-1438082-6	2LIT-14A464-SD-041		
46											31																				9			6			3		8-1438082-5	2LIT-14A464-SD-040	
		43	42			39		37										20	19	18							11	10	9							2	1		8-1438082-4	2LIT-14A464-SD-039	
		43								31	29									18																			8-1438082-3	2LIT-14A464-SD-038	
	45	44	43	42		40		38	37	36		33	31	29		24	22	21	20		18	17	16	15						9	8					2		8-1438082-0	2LIT-14A464-SD-037		
	45		43					36	35			31				24						16		14	12						7	6				2	1		7-1438082-9	2LIT-14A464-SD-036	
	45		43					36	35			31				24		21	19			16		14	12						7	6				2	1		7-1438082-8	2LIT-14A464-SD-035	
		43	42			39	38	37			32			28						19	18	17	16					10	9										7-1438082-5	2LIT-14A464-SD-034	
	45	44	43	42		40		38	37	36		33	31	29		24	22	21	20		18	17	16	15						9	8		6			2		7-1438082-4	2LIT-14A464-SD-033		
	45	44	43	42		40		38	37	36		33	31			24	22	21	20		18	17	16	15						9	8		6			2		7-1438082-3	2LIT-14A464-SD-032		
					40							29																											6-1438082-6	2LIT-14A464-SD-031	
														27													12												6-1438082-3	2LIT-14A464-SD-030	
														27																									6-1438082-2	2LIT-14A464-SD-029	
														27																									6-1438082-1	2LIT-14A464-SD-028	
											29	28			25		21			18		16																	5-1438082-6	2LIT-14A464-SD-027	
											29	28			25		21					16																	5-1438082-5	2LIT-14A464-SD-026	
											30	29					21			18		16																	5-1438082-2	2LIT-14A464-SD-025	
		43	42			39		37									20	19	18	17			15	14			11	10	9	8	7			4	3	2	1		5-1438082-0	2LIT-14A464-SD-024	
		42																					15	14			11	10	9	8	7			4	3				4-1438082-9	2LIT-14A464-SD-023	
		43	42			39		37									20	19	18	17						11	10	9								2	1		4-1438082-8	2LIT-14A464-SD-022	
		42																								11	10	9												4-1438082-7	2LIT-14A464-SD-021
		43	42			39		37								23	20	19	18	17						11	10	9									2		4-1438082-2	2LIT-14A464-SD-020	
45	43					36	35				31				24					18	17	16		14	12						7	6				2	1		4-1438082-0	2LIT-14A464-SD-019	
		43	42			39		37							23		20	19	18	17			15	14		11	10	9	8	7			4	3	2				3-1438082-8	2LIT-14A464-SD-018	
		42													23								15	14		11	10	9	8	7			4	3					3-1438082-7	2LIT-14A464-SD-017	
		43	42			39		37							23		20	19	18	17	16					11	10	9									2		3-1438082-6	2LIT-14A464-SD-016	
		42													23											11	10	9												3-1438082-5	2LIT-14A464-SD-015
45	43				39	37	36	35			31				24		21		19	18	17	16		14	13	12				9		7	6			2	1		3-1438082-4	2LIT-14A464-SD-014	
45	43				39	37	36	35		33	31				25	24		21		19	18	17	16		14	13	12				9		7	6			2	1		3-1438082-3	2LIT-14A464-SD-013
45	43						36	35			31				24		21		19	18	17	16		14	12						7	6					2	1		3-1438082-2	2LIT-14A464-SD-012
		42																					15	14	13			10	9	8	7			4	3				3-1438082-1	2LIT-14A464-SD-011	
		43	42			39		37										20	19	18	17				13			10	9									2		3-1438082-0	2LIT-14A464-SD-010
		42																									10	9												2-1438082-9	2LIT-14A464-SD-009
		43	42			39		37										20	19	18	17		15	14	13			10	9	8	7			4	3	2			2-1438082-5	2LIT-14A464-SD-008	
45																																									

PIN-OUT CHART KEYING OPTION "A" AMP 4805 REV 31MAR2000





# Mouser Electronics

Authorized Distributor

Click to View Pricing, Inventory, Delivery & Lifecycle Information:

[TE Connectivity:](#)

[5-1438082-7](#)