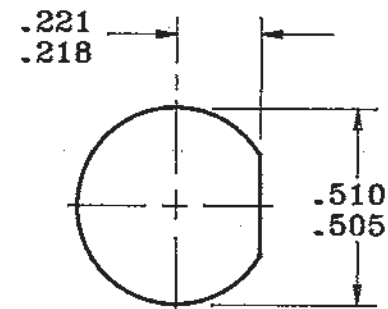
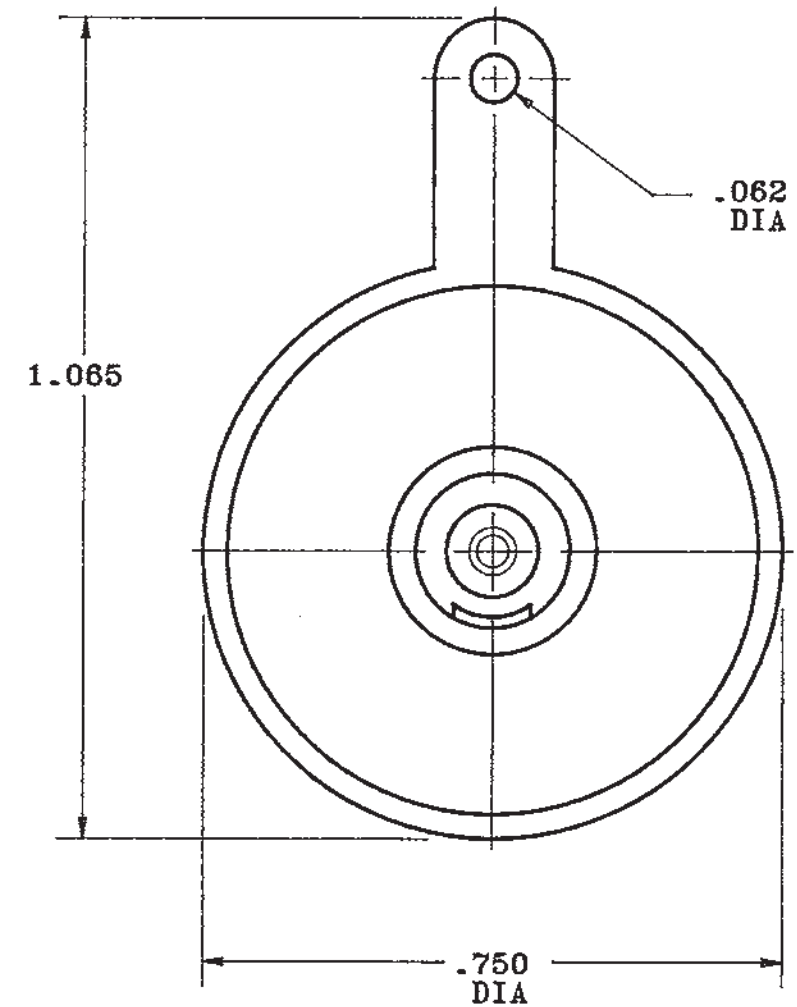
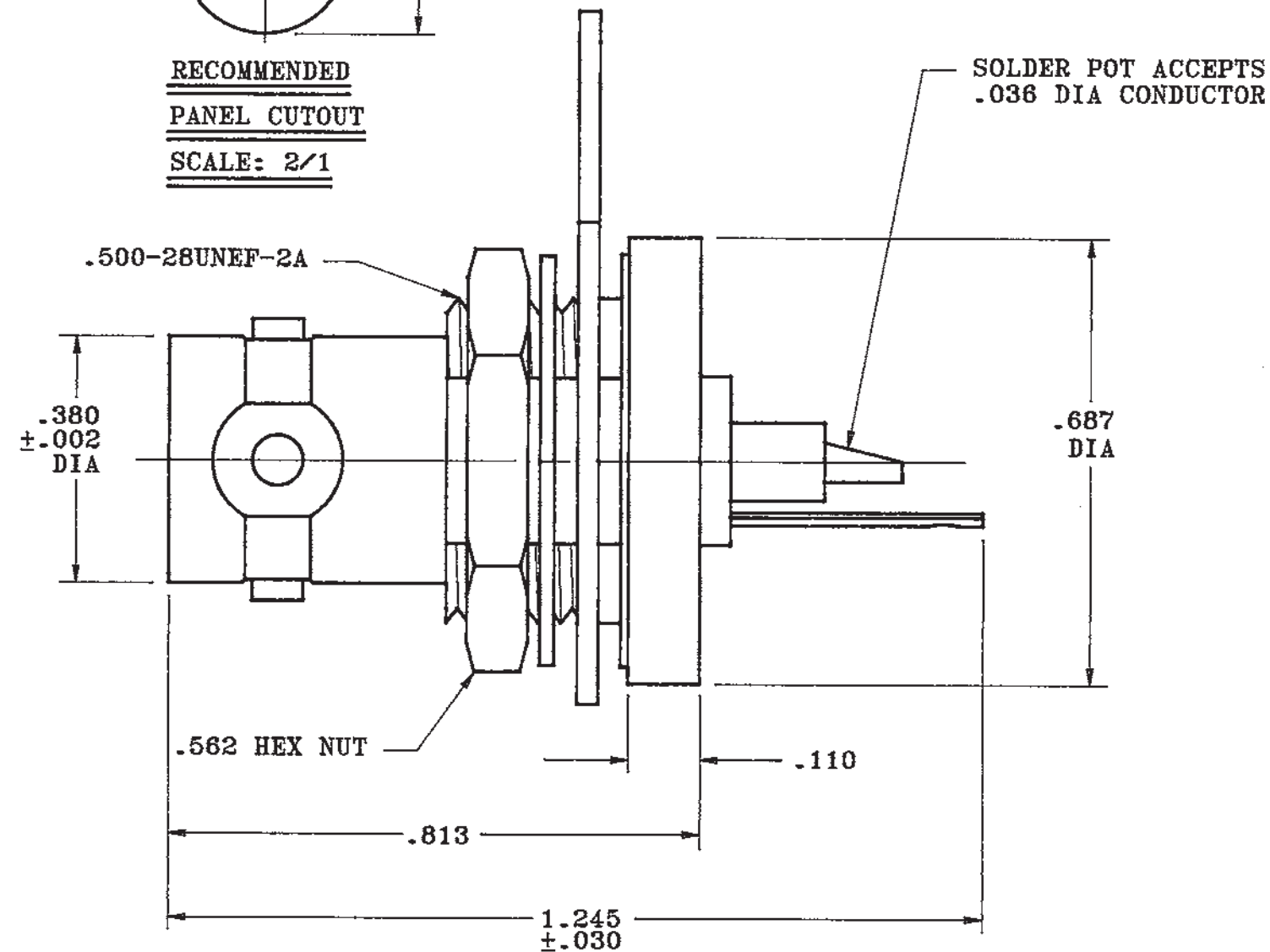


DATA CONTAINED IN THIS DOCUMENT IS PROPRIETARY TO TROMPETER ELECTRONICS INC. AND SHALL NOT BE DISCLOSED, COPIED OR USED FOR PROCUREMENT OR MANUFACTURE WITHOUT EXPRESS WRITTEN PERMISSION.

REVISIONS			3000-0237		SH 1
REV	EO	DESCRIPTION	DWN	APPROVED	DATE
C	7645	REV BOM & ①, SH 2 & REDWN	RAG	F3, BM, <i>[Signature]</i>	9-24-87
D	7871	OBSOLETE	RAG	OK, BM, <i>[Signature]</i>	7-25-88
E	8290	DWG RE-INSTATED	DKC	OK, BM, <i>[Signature]</i>	12-20-88





RECOMMENDED
PANEL CUTOUT
SCALE: 2/1



INCH	MM
.002	0.05
.005	0.13
.030	0.76
.036	0.91
.062	1.57
.094	2.39
.110	2.79
.218	5.54
.221	5.61
.380	9.65
.505	12.83
.510	12.95
.562	14.27
.687	17.45
.750	19.05
.813	20.65
1.065	27.05
1.245	31.62

1. ALL DIM ARE IN INCHES
2. FINISH: TFS-1A (NICKEL)
3. 4-LUG CONCENTRIC TWINAX/TRIAX TRB REAR MOUNT SOLDER POT BULKHEAD RECEPTACLE
4. MAX PANEL THK .094

QTY		DESCRIPTION		PART NUMBER		ITEM
TOL UNLESS SPECIFIED		 a cinch connectivity solutions brand		BJ71FL		
.XX ±						
.XXX ± .005						
.XXXX±						
ANGLES±						
DWN	RAG	8/31/87	MATERIAL	CODE IDENT	DRAWING NO.	REV
CHK	F3	9-14-87	—	14949	3000-0237	E
ENGR	BM	9-15-87				
APPR		9-23-87	SCALE 4/1	DATE 4/3/85	SHEET 1 OF 2	

Mouser Electronics

Authorized Distributor

Click to View Pricing, Inventory, Delivery & Lifecycle Information:

[Cinch Connectivity Solutions:](#)

[BJ71FL](#)