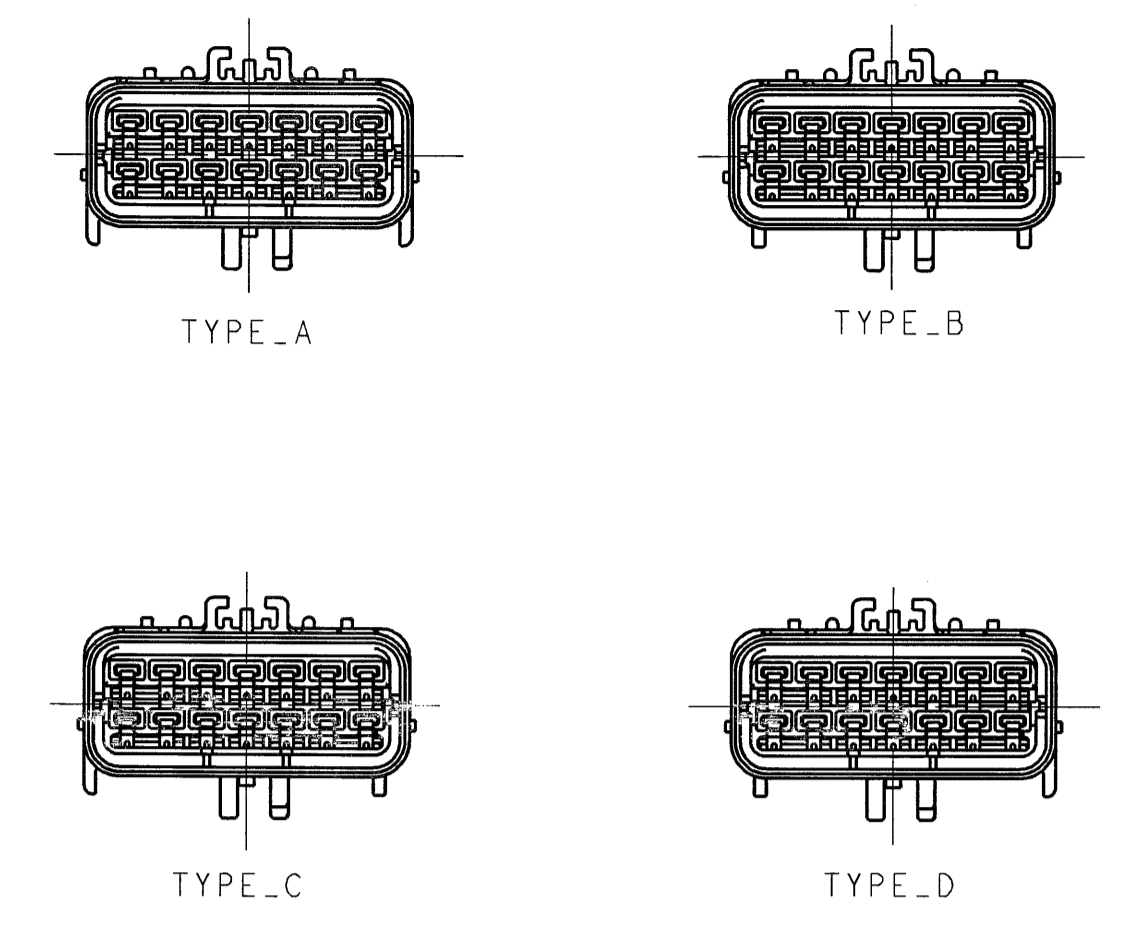
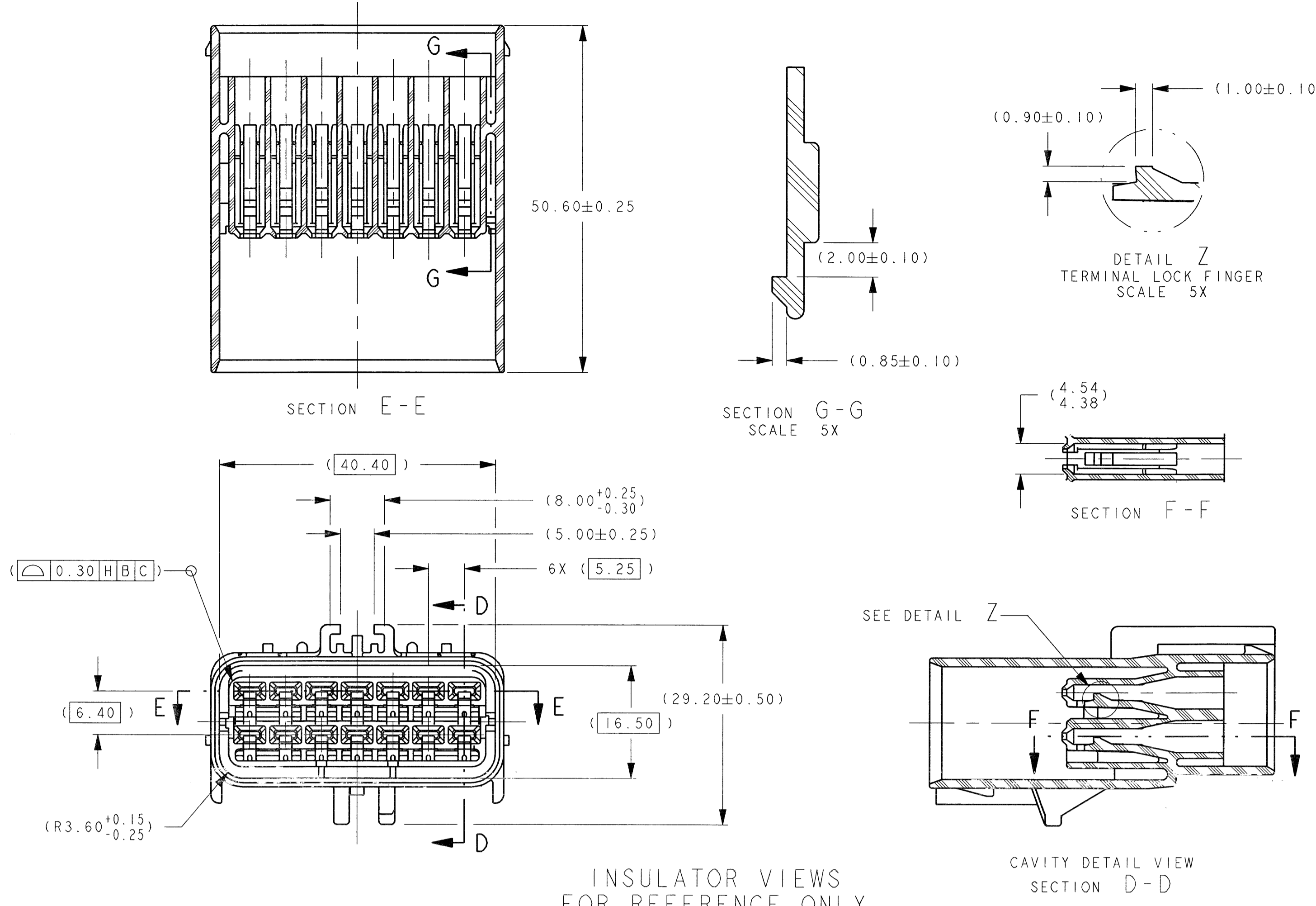
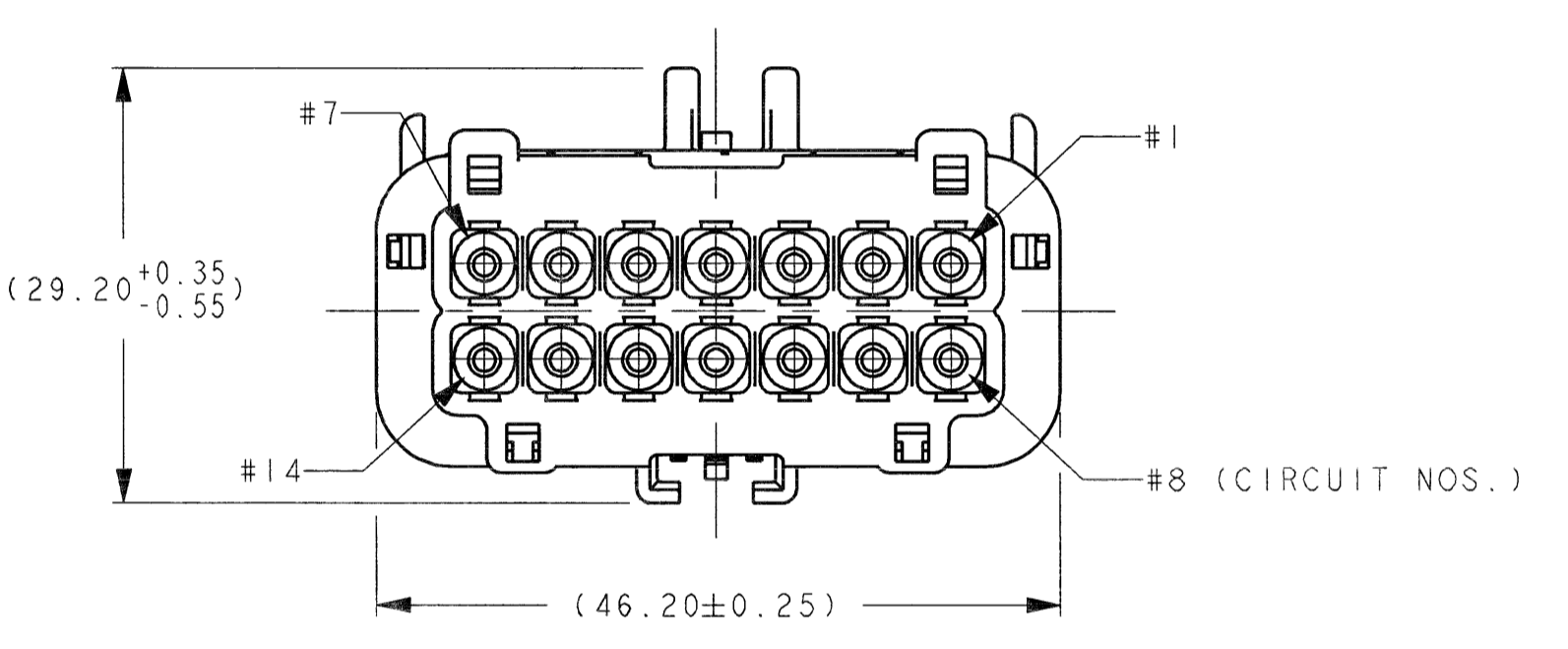
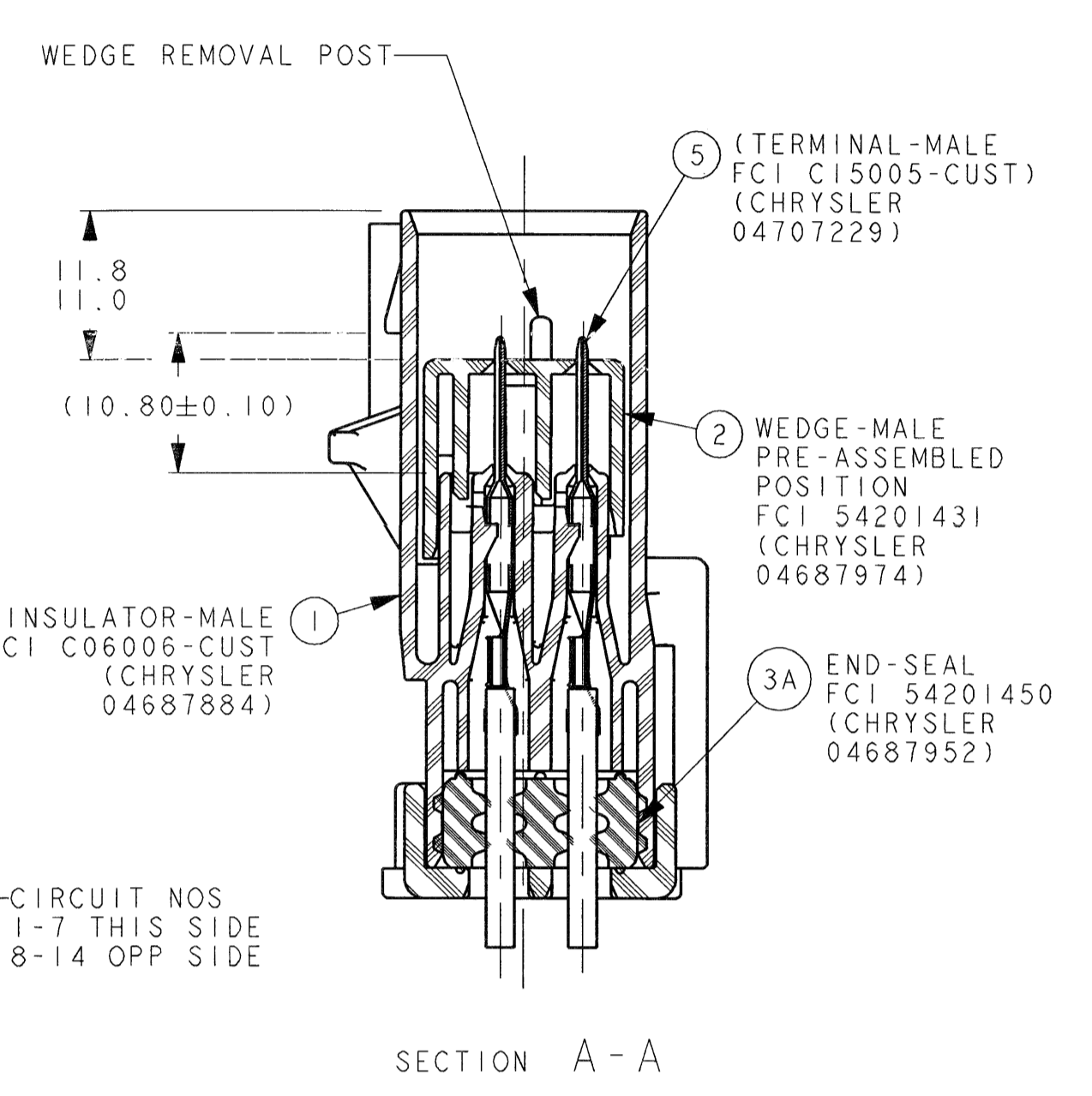
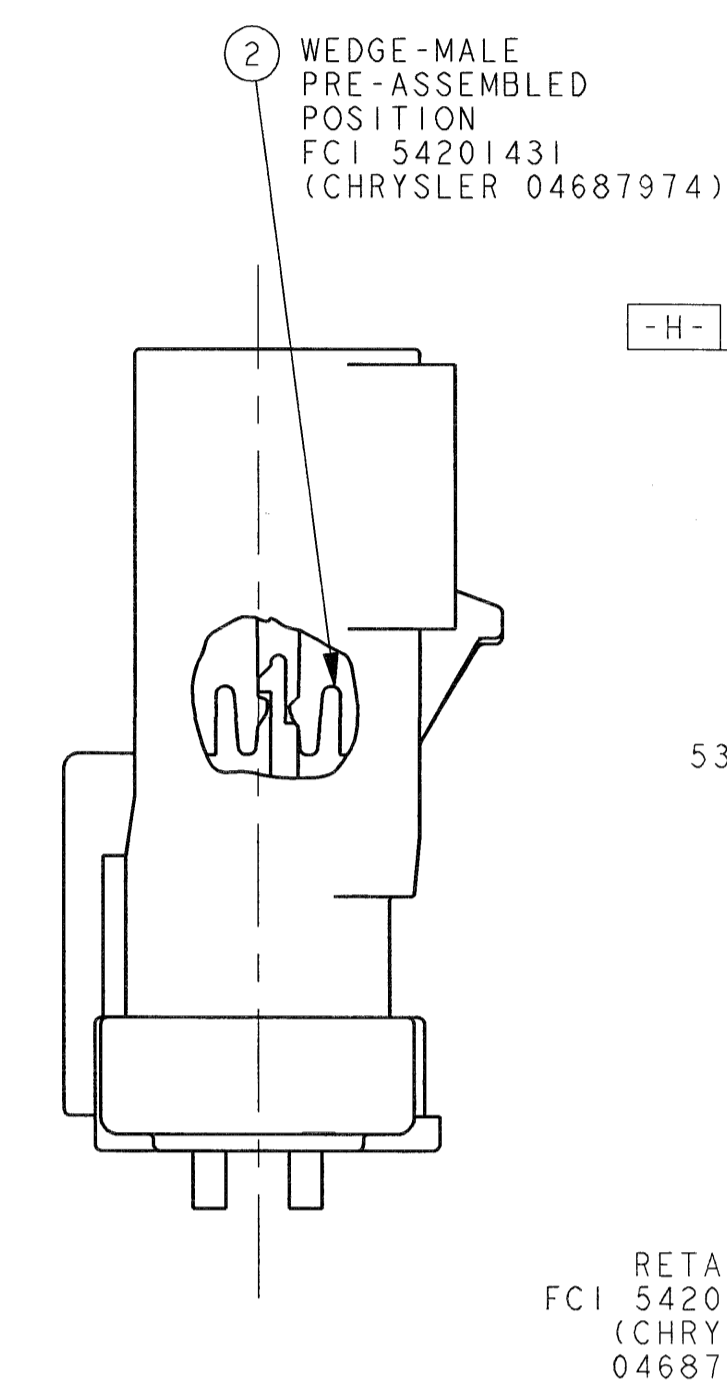
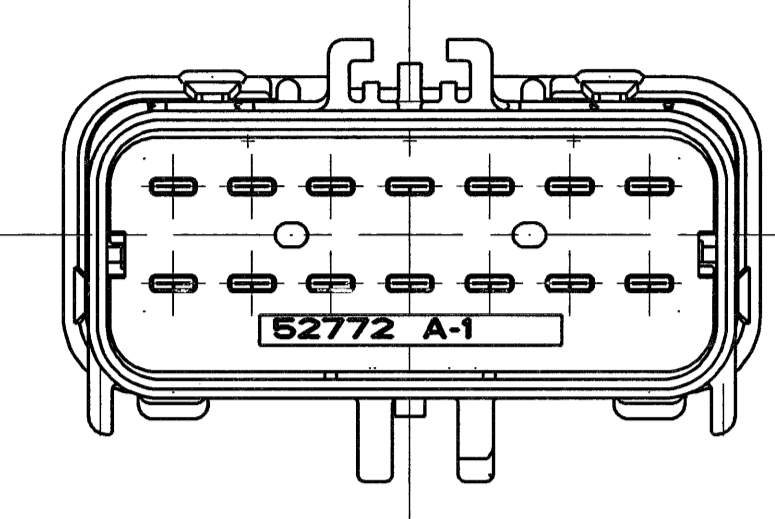
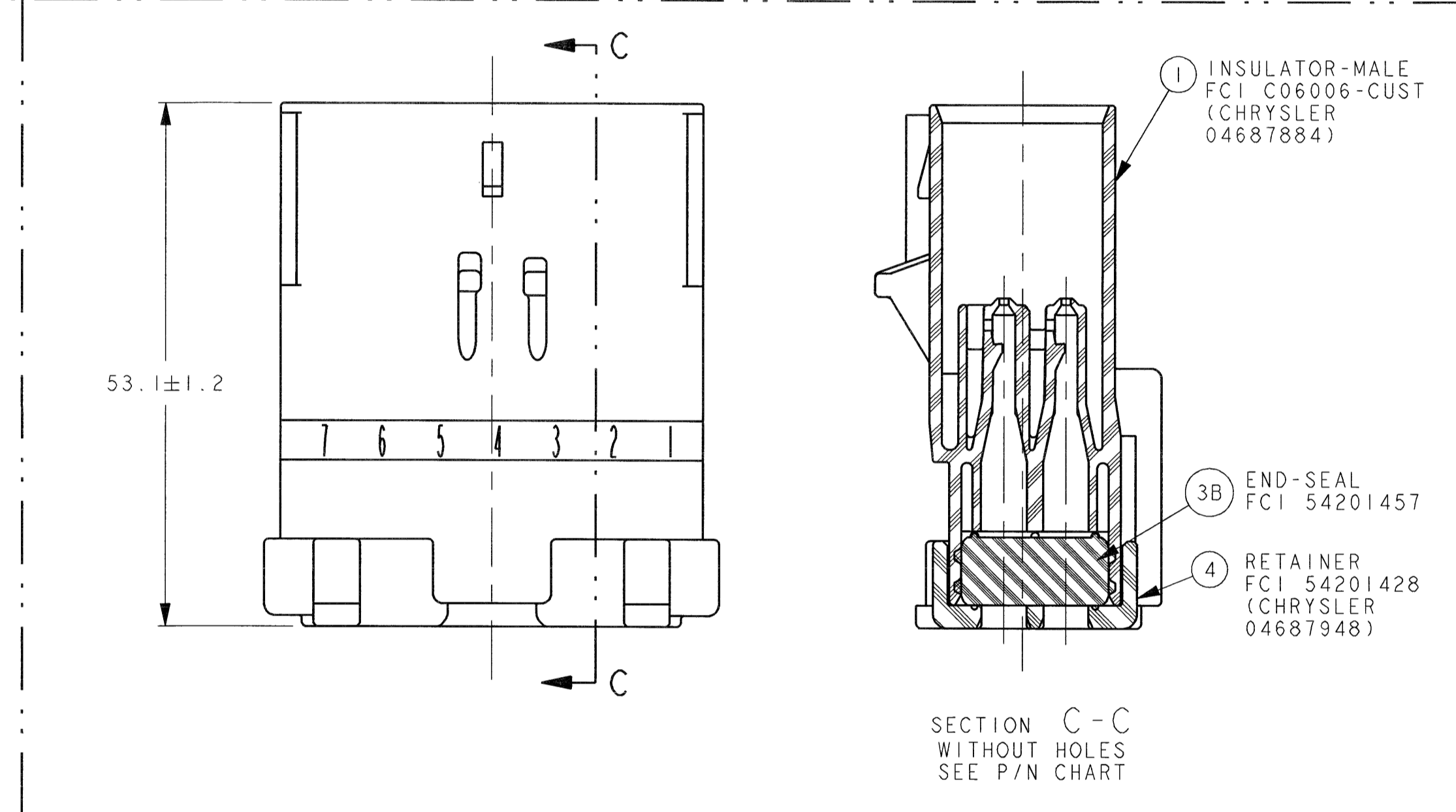
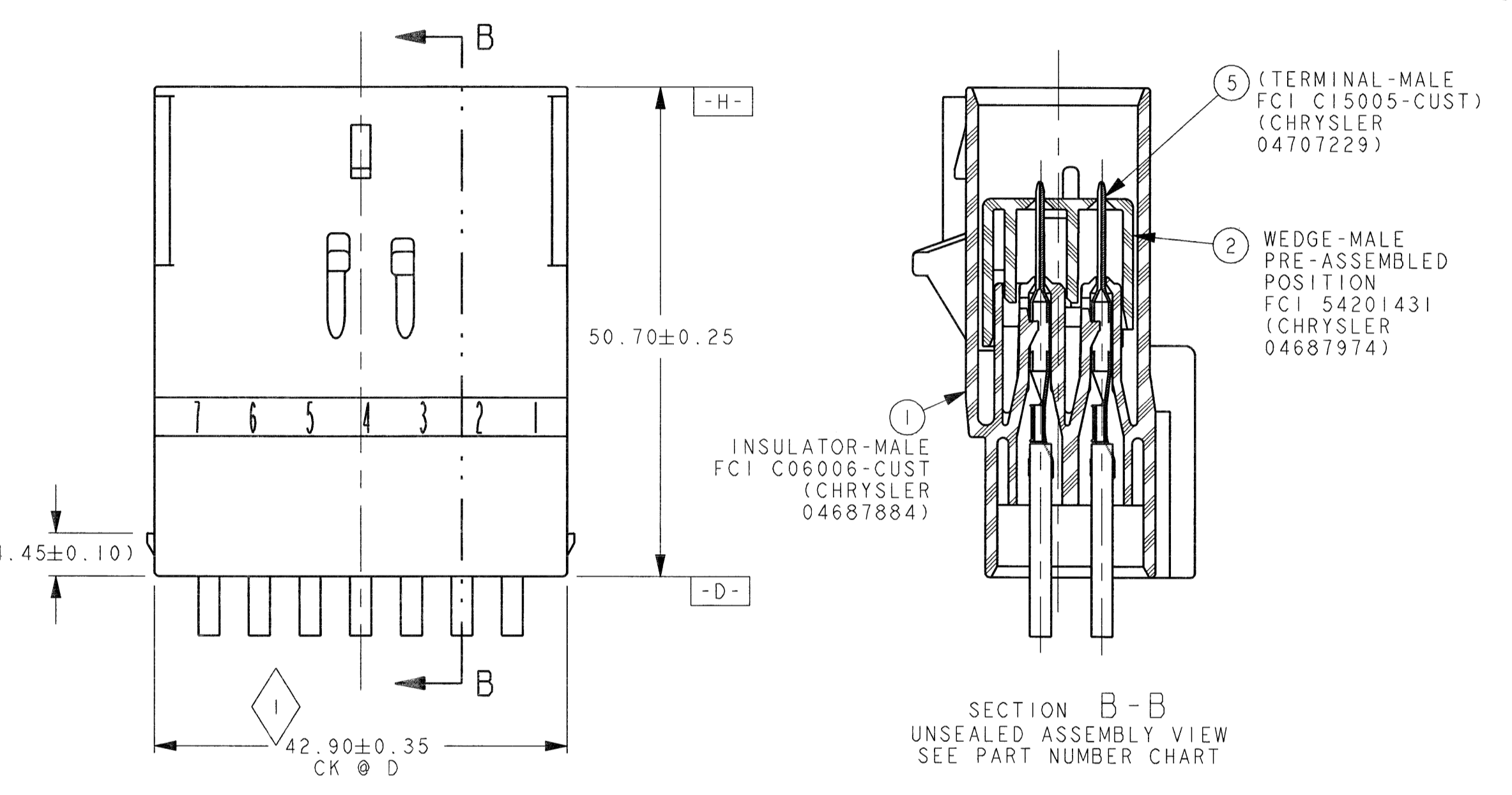


LAST 5 DIGIT OF 8 DIGIT P/N & PART CHANGE LEVEL (PCL) OR  
 LAST 6 DIGITS OF 10 DIGIT P/N & PART CHANGE LEVEL (PCL),  
 MFG. DAILY DATE CODE & ASSY MACHINE NO. LETTERING MUST BE LEGIBLE  
 OPTIONAL

XX-XXXX  
 XXXXXX



POLARIZATION OPTIONS  
 FULL SIZE



- NOTES:
- 1. QUALITY ASSURANCE REQUIREMENTS PER CHRYSLER PS-7300: 1 SPC DATA REQUIRED
  - 2. ENGINEERING APPROVAL OF SUPPLIER SAMPLES IS REQUIRED PRIOR TO AUTHORIZATION OF PART PRODUCTION
  - 3. CHANGES IN DESIGN COMPOSITION OR PROCESSING FROM THE PART PREVIOUSLY APPROVED FOR PART PRODUCTION REQUIRES PRIOR ENGINEERING APPROVAL
  - 4. WIRING FABRICATORS MUST PURCHASE FROM SOURCES SHOWN
  - 5. ALL THE SEALED CONNECTOR APPLICATIONS MAY BE USED WITH CHRYSLER WIRE SPEC. MS-8288 OR MS-9502 THIN WALL X-LINK 20, 18, 16 & 14 GAGE WIRES ONLY UNLESS OTHERWISE SPECIFIED SEE CHART (WIRE INSULATIONS Ø1.70 MIN TO Ø3.35 MAX)
  - 6. ALL NON-SEALED APPLICATIONS MAY BE USED WITH ANY WIRE INSULATION 22 GAGE THRU 10 GAGE (EXCEPT AS NOTED) PROVIDING THAT A TERMINAL GRIP FOR THAT CORE/INSULATION COMBINATION IS SHOWN ON THE MALE TERMINAL DRAWING

- NOTE:
- MAX. INSULATION CRIMP WIDTH = 4.50
  - MAX. INSULATION CRIMP HEIGHT = 4.50
  - MAX. INSULATION CRIMP DIA. = 4.09 (10 GA THIN WALL)
- 1. USE WITH CAVITY PLUG FCI P/N 54200005 (CHRYSLER P/N 56038308) WHEN REQ'D
  - 2. USE WITH DOUBLE X-MAS TREE CLIP FCI P/N 54200010 W/FORWARD STOP WHEN REQ'D
  - 3. USE WITH DOUBLE X-MAS TREE CLIP CHRYSLER P/N 04707091 WHEN REQUIRED
  - 4. USE WITH SINGLE X-MAS TREE CLIP CHRYSLER P/N 04625797 WHEN REQUIRED
  - 5. USE WITH 2.80MM APEX MALE TERM PER C15005-CUST SYM ABOUT CENTERLINE FOR 180° ORIENTATION
  - 6. DIRECT CONNECT DRAWING NO. FCI G36014 (CHRYSLER 04707029)
  - 7. TEST METHOD PER SAE/USCAR-2 REV.5, CONNECTOR ENGAGE & DISENGAGE WITH FEMALE LATCH DEPRESSED FORCE NOT TO EXCEED 142 N (32LBS/PF-752(T)) FOR THIS SYSTEM
  - 8. PRESSURE 3 PSI (22 KPA) PER TEST PF-752(T)
  - 9. WEDGE SEATING FORCES - 150 N MAX
  - 10. X-MAS TREE CLIP INSERTION FORCES - 75 N MAX
  - 11. SUPPLIER, MOLD & CAVITY I.D. SIGNIFIES TOOL OWNERSHIP, FOR REFERENCE
  - 12. ANNUAL QUALITY REQUIREMENTS: IT IS PERMISSIBLE TO PERFORM CONTINUOUS CONFORMANCE PER FCI SPECIFICATION WAGA-001 INSTEAD OF ANNUAL LAYOUT & ANNUAL PV REQUIREMENTS OF QS-9000 SECTION 2 & PF-9600

- ALL NON-REFERENCE DIMENSIONS ARE REQUIRED
- USE INDEX A, BLACK SEALED AND UNSEALED FOR ALL AFFECTED INSULATOR CAVITIES
  - CURRENT PRODUCTION TOOLING
  - POINT OF LAST RUN
  - SERVICE TOOLING GUIDE INFORMATION PER APEX TRAINING MANUAL
  - 13. MUST CONFORM TO THE FOLLOWING CHRYSLER/YNA STANDARDS:
1. PF9600
  2. PS-7300 QUALITY ASSURANCE (CHRYSLER)
  3. MS-9502 SEAL APPL. 150 °C
  4. MS-8288 SEAL APPL. 125 °C
  5. PS-9227 DATA EXCHANGE (CHRYSLER), (G009-7 YNA)
  6. PS-10052 INFORMATION SECURITY (CHRYSLER)
14. THIS DRAWING (H59016) REPLACES CHRYSLER DRAWING NUMBER 04687887 LEVEL "H" CHRYSLER DRAWING IS FOR REFERENCE ONLY FOR PREVIOUS CHANGES

FCI P/N'S	CHRYSLER P/N'S	NON-CHRYSLER P/N'S	UNSEALED	SEALED
LT GREEN	UNSEALED DIRECT CONNECT APPLICATION	54201452N	N/A	N/A
UNSEALED DIRECT CONNECT APPLICATION	54201452	04868345AA	N/A	N/A
NATURAL	UNSEALED DIRECT CONNECT APPLICATION	54201403N	N/A	N/A
SEALED	54201464	N/A	N/A	N/A
SEALED	54201418	N/A	N/A	N/A
SEALED	54201418	04707243	N/A	54201414
UNSEALED DIRECT CONNECT APPLICATION	54201402N	N/A	N/A	N/A
UNSEALED DIRECT CONNECT APPLICATION	54201402	04687931	7283-4648-10	7283-4748-10
SEALED	54201463	N/A	N/A	N/A
SEALED	54201417	N/A	N/A	N/A
SEALED	54201417	04707241	N/A	54201413
UNSEALED DIRECT CONNECT APPLICATION	54201453N	N/A	N/A	N/A
UNSEALED DIRECT CONNECT APPLICATION	54201453	N/A	7283-4747-40 (E0001361)	N/A
UNSEALED	54201405	N/A	N/A	N/A
UNSEALED	54201405	04687936	N/A	54201401
SEALED	54201462	N/A	N/A	54201412
SEALED	54201416	N/A	N/A	54201412N
SEALED	54201416	04687934	N/A	54201412
UNSEALED	54201404	N/A	N/A	54201442N
UNSEALED	54201404	04687935	N/A	54201442
UNSEALED	54201404	N/A	N/A	54201400N
UNSEALED	54201404	04687935	N/A	54201400
SEALED	54201459	N/A	N/A	54201411
SEALED	54201415	04687933	N/A	54201411
SEALED	54201415	04687933	N/A	54201419N
SEALED	54201415	04687933	N/A	54201443
SEALED	54201415	04687933	N/A	54201445N
SEALED	54201415	04687933	N/A	54201456N
INDEX TYPE	FCI (CHRYSLER) YNA	FCI (CHRYSLER) YNA		
COLOR	CHRYSLER APPLICATION	MATING ASSEMBLY PART NUMBERS FOR REFERENCE ONLY		
SEALED/UNSEALED	MALE ASSEMBLY PART NUMBERS			

FCI P/N'S	CHRYSLER P/N'S	NON-CHRYSLER P/N'S	UNSEALED	SEALED
54201404	04687935	N/A	N/A	N/A
54201405	04687936	N/A	N/A	N/A
54201468	N/A	N/A	N/A	N/A
54201415	04687933	GMI5125233	N/A	N/A
54201416	04687934	N/A	N/A	N/A
54201417	04707241	N/A	N/A	N/A
54201418	04707243	N/A	N/A	N/A
54201459	N/A	N/A	N/A	N/A
54201462	N/A	N/A	N/A	N/A
54201463	N/A	N/A	N/A	N/A
54201464	N/A	N/A	N/A	N/A

REQUIRED	REQUIRED	ITEM	FCI P/N	CHRYSLER P/N	PART NAME	MATERIAL				
I	I	I	54201424	04687803	INS-MALE INDEX A; BLK	NYLON 66				
I	I	I	54201425	04687947	INS-MALE INDEX B; LT GREY	NYLON 66				
I	I	I	54201426	04707239	INS-MALE INDEX C; DK GREY	NYLON 66				
I	I	I	54201427	04707240	INS-MALE INDEX D; NATURAL	NYLON 66				
I	I	I	54201431	04687974	WEDGE-MALE; RED	NYLON 66				
I	I	I	54201450	04687952	END SEAL; LT BLUE (20, 18, 16 & 14AWG)	SILICONE				
I	I	I	54201457	***9308014	END SEAL; BRT YELLOW (NO HOLES)	SILICONE				
I	I	I	54201428	04687948	RETAINER; BLACK	NYLON 66				
3	3	3	CONNECTOR ASSEMBLY TEMPERATURE CLASS PER SAE/USCAR-2 REV.5							
E	G	K	G	F	G	K	G	J	J	

(SEE TABLE)	---	---	---	---	---
PART NUMBER	PART NUMBER	REV DATE	REV	DRAWING NUMBER	---
FCI	FCI			CUSTOMER	

DATE	BY	TYPE	REVISION	DESCRIPTION	SHOWN BY	CHECK BY	APP'D BY
01/20/00	...	...	...	...	...	...	...
02/20/00	...	...	...	...	...	...	...

APPROVED FOR RELEASE

THIS DRAWING AND ALL SPECIFICATIONS CONTAINED HEREIN IS THE PROPERTY OF FCI AND IS TO BE USED ONLY FOR THE PURPOSES SPECIFIED IN THE DRAWING. IT IS NOT TO BE REPRODUCED, COPIED, OR TRANSMITTED IN ANY FORM OR BY ANY MEANS, ELECTRONIC OR MECHANICAL, INCLUDING PHOTOCOPYING, RECORDING, OR BY ANY INFORMATION STORAGE AND RETRIEVAL SYSTEM.

FCI

12 0MM APEX CONNECTOR SYSTEM

H59016

1/1

FCI	5272 OR 5272 H	SEE CHART
VENDOR	VENDOR CODE	PCL
23	22	

FCI - FRAMATOME CONNECTORS INTERNATIONAL  
 YNA - YAZAKI NORTH AMERICA

\*\* INTERLOCK P/N

# Mouser Electronics

Authorized Distributor

Click to View Pricing, Inventory, Delivery & Lifecycle Information:

[Aptiv:](#)

[54201405](#) [54201410](#) [54201405-B](#) [54201404](#) [54201418-B](#) [54201418](#) [54201410-B](#) [54201404-B](#) [54201417-B](#)  
[54201417](#)