

4

3

2

1

THIS DRAWING IS UNPUBLISHED.

RELEASED FOR PUBLICATION

© COPYRIGHT

ALL RIGHTS RESERVED.

LOC

DIST

REVISIONS

P	LTR	DESCRIPTION	DATE	DWN	APVD
	A1	ECR-14-018880	26DEC2014	GK	HMR

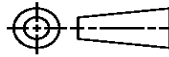
REPLACED BY OCEAN STYLE APPLICATOR PART
NUMBER 2266503-1

FOR REPLACEMENT PARTS FOR APPLICATOR 1855216
REFER TO ADDITIONAL PAGE(S). SPARE PARTS KIT (IF LISTED)
WILL REMAIN AVAILABLE.

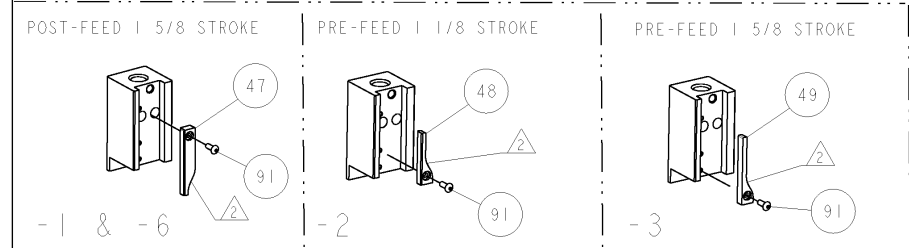
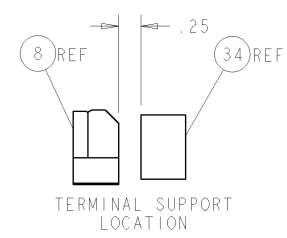
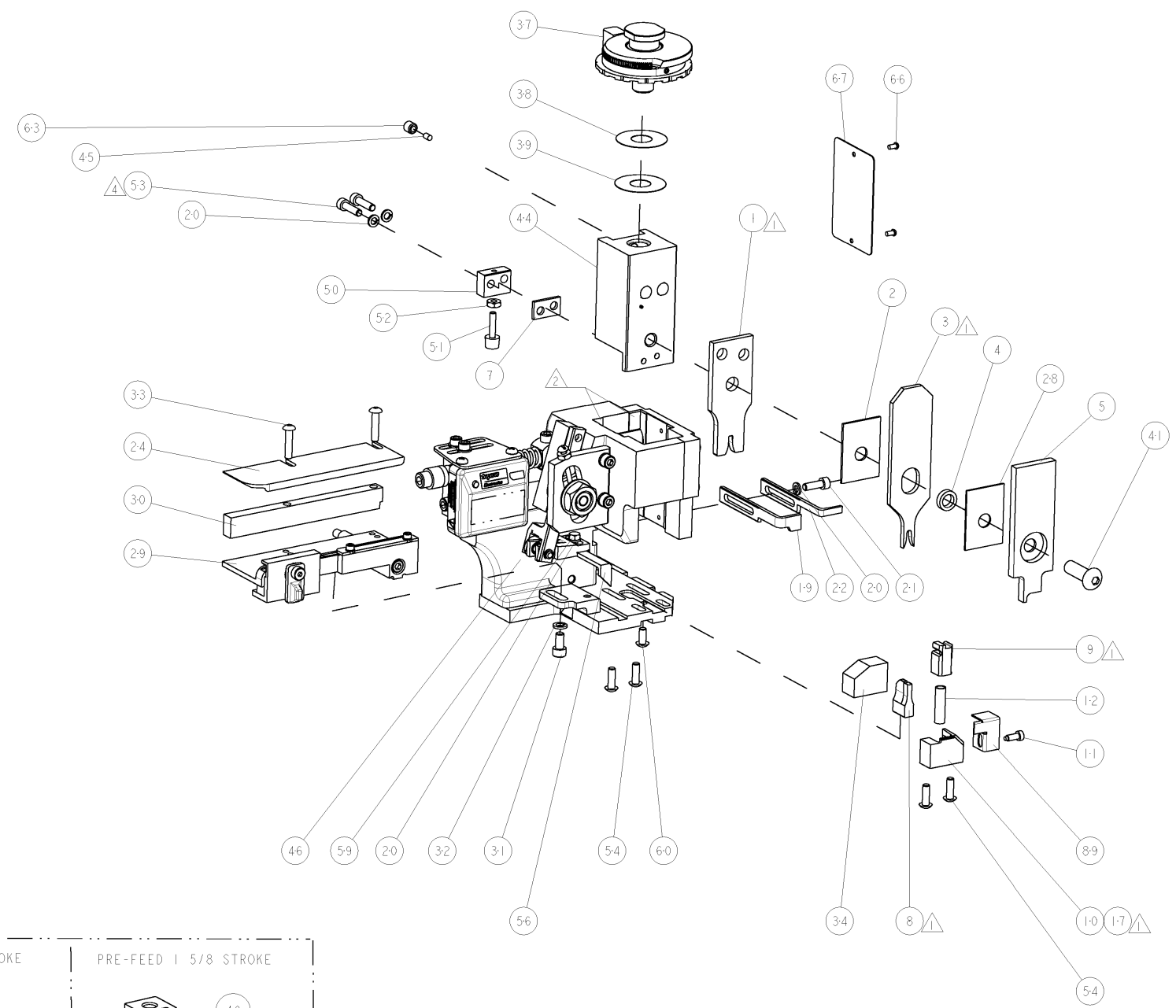
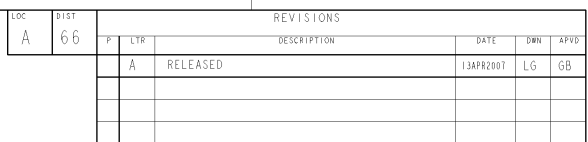
THE REPLACEMENT OCEAN STYLE APPLICATOR HAS THE
SAME TERMINATOR/PRESS INTERFACE AS APPLICATOR
1855216

THIS DRAWING IS A CONTROLLED DOCUMENT.		DWN	GOPALAKRISHNA HV			
		CHK	RAGHAVENDRA			
		APVD	RAGHAVENDRA			
		PRODUCT SPEC				
		APPLICATION SPEC				
		WEIGHT				
		CUSTOMER DRAWING		SCALE	SHEET 1 OF 2	
				REV	A1	

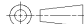
TE Connectivity	
NAME	
FINE ADJUST SIDE FEED HDM APPLICATOR	
SIZE	CAGE CODE
DRAWING NO	RESTRICTED TO
A3	©- 1855216

DIMENSIONS:	TOLERANCES UNLESS OTHERWISE SPECIFIED:
	0 PLC ±
	1 PLC ±
	2 PLC ±
	3 PLC ±
	4 PLC ±
ANGLES ±	
MATERIAL	FINISH

- 1 RECOMMENDED SPARE PARTS
- 2 GREASE LIGHTLY
- 3 GUARD MUST BE IN PLACE WHEN OPERATING APPLICATOR IN A BENCH MACHINE
- 4 CUT LENGTH AT ASSEMBLY.
- 5 REFERRING APPL SPEC NO. 114-18020 FOR TERMINAL 929971 AND 929964.
REFERRING APPL SPEC NO. 114-18040 FOR TERMINAL 929987.



3	-	-	-	REF	-	...	455749-1	GUARD WINDOW	116
3	-	-	REF	-	-	...	679532-1	INSERT, GUARD	115
	-	1	1	1	1	-	1-21002-7	SCR, BTN SKT HD CAP 6-32 X .375	91
	-	1	1	1	1	-	318563-1	GUARD, FRONT CHIP	89
	-	1	1	1	1	-	4088040	SF APPL INST 408-8040	72
	-	1	1	1	1	-	217238-1	GENERAL INSTRUCTION PKG	71
	-	1	1	1	1	-	461264-5	PLATE, IDENTIFICATION	67
	-	2	2	2	2	-	21017-2	SCREW, DRIVE	66
	-	1	1	1	1	-	21009-2	SCR, SET, SELF LOCKING 1/4-20 X .250	63
	-	1	1	1	1	-	22733-8	SCR, BHSC, SELF-LOCKING, 8-32 X .375	60
	-	1	1	1	1	-	2-22603-0	SCR, HEX HD CAP 8-32 X .312	59
	-	1	1	1	1	-	458537-2	PAWL, FEED	56
	-	4	4	4	4	-	2-21002-2	SCR, BTN SKT HD CAP 8-32 X .500	54
	-	2	2	2	2	-	2-21000-8	SCR, SKT HD CAP 8-32 X .625	53
4	-	1	1	1	1	-	21018-5	NUT, HEX, REG 6-32	52
	-	1	1	1	1	-	811242-2	BUMPER, HOLD DOWN	51
	-	1	1	1	1	-	690753-1	SPACER, TONKER	50
	-	-	1	-	-	...	690602-6	CAM, PRE FEED, 1 5/8	49
	-	-	-	1	-	...	690602-5	CAM, PRE FEED, 1 1/8	48
	-	1	-	-	1	-	690501-4	CAM, POST FEED, 1 5/8	47
	-	1	1	1	1	-	459456-1	APPL, BASIC SUB ASSY (SIDE WISE MQCA)	46
	-	1	1	1	1	-	690191-1	PLUG, NYLON	45
	-	1	1	1	1	-	455673-1	RAM, SIDE FEED	44
	-	1	1	1	1	-	7-21002-9	SCR, BTN SKT HD CAP 5/16-24 X 1.00	41
	-	1	1	1	1	-	690125-1	SHIM SUB-ASSY	39
	-	1	1	1	1	-	469367-1	SHIM	38
	-	1	1	1	1	-	879103-2	FINE ADJUST HEAD ASSEMBLY	37
	-	1	1	1	1	-	690786-4	TERMINAL SUPPORT	34
	-	2	2	2	2	-	2-21002-4	SCR, BTN SKT HD CAP 8-32 X .750	33
	-	1	1	1	1	-	21024-5	WASHER, SPRG LOCK, REG NO 10	32
	-	1	1	1	1	-	3-21000-4	SCR, SKT HD CAP 10-32 X .375	31
	-	1	1	1	1	-	1320908-8	SPACER, STRIP GUIDE	30
	-	1	1	1	1	-	1633091-1	ASSEMBLY, STRIP GUIDE	29
	-	1	1	1	1	-	455888-8	SPACER, CRIMPER	28
	-	1	1	1	1	-	1320928-1	PLATE, STRIP GUIDE	24
	-	1	-	-	1	-	690472-2	STRIPPER	22
	-	1	1	1	1	-	2-21000-7	SCR, SKT HD CAP 8-32 X .500	21
	-	4	4	4	4	-	21024-4	WASHER, SPRG LOCK, REG NO 8	20
	-	-	1	1	-	-	691353-1	STRIPPER	19
1	-	1	-	-	-	-	679625-1	SHEAR HOLDER, FRONT (NO CUT)	17
	-	1	1	1	1	-	3-22280-3	SPRING, COMPRESSION	12
	-	1	1	1	1	-	690461-1	STOP, SHEAR	11
	-	-	1	1	1	-	690459-1	SHEAR HOLDER, FRONT	10
1	-	1	1	1	1	-	454276-1	FLOATING SHEAR, FRONT	9
1	1	1	1	1	1	-	8-803653-8	ANVIL, COMBINATION	8
	-	1	1	1	1	-	1-240641-3	SPACER	7
	-	1	1	1	1	-	2-455889-0	DEPRESSOR, SHEAR	5
	-	1	1	1	1	-	238011-2	BLOCK, CRIMPER SPACER	4
1	1	1	1	1	1	-	1-456135-6	CRIMPER, INSULATION O PREMIUM	3
	-	1	1	1	1	-	1-455888-1	SPACER, CRIMPER	2
1	1	1	1	1	1	-	456407-4	CRIMPER, WIRE PREMIUM	1

THIS DRAWING IS A CONTROLLED DOCUMENT FOR THE CUSTOMER'S INFORMATION. IT IS SUBJECT TO CHANGE AND THE CUSTOMER'S ENGINEERING ORGANIZATION SHOULD BE CONTACTED FOR THE LATEST REVISION INFORMATION.		DWN J SEKI 27MAR2007 CHK J L GROSS 27MAR2007		tyco Tyco Electronics Electronics Harrisburg, PA 17105-3688		NO
DIMENSION: INCHES		TOLERANCES UNLESS OTHERWISE SPECIFIED:		NAME FINE ADJUST SIDE FEED HDW APPLICATOR		
		0 PLC ±. 1 PLC ±0.1 2 PLC ±0.001 3 PLC ±0.001 4 PLC ±0.0001 ANGLES		PRODUCT SPEC - APPLICATION SPEC -		
MATERIAL -		FINISH -		SIZE CAGE CODE DRAWING NO A 00779 C-1855216		RESTRICTED TO
		WEIGHT -		SCALE 3:5 SHEET 1 OF 1 REV A		
CUSTOMER DRAWING				CUSTOMER VIEWABLE ASSEMBLY		

Mouser Electronics

Authorized Distributor

Click to View Pricing, Inventory, Delivery & Lifecycle Information:

[TE Connectivity:](#)

[1855216-6](#)