

HDMP-XX-01-S-EM

No OF POSITIONS

-19: SEE FIG 1  
-29: SEE FIG 2

TERMINATION

-EM: EDGE MOUNT

LEAD STYLE

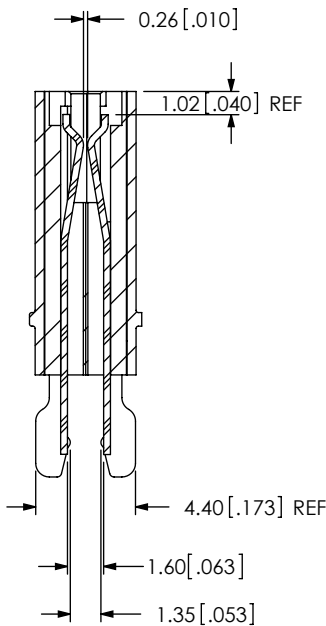
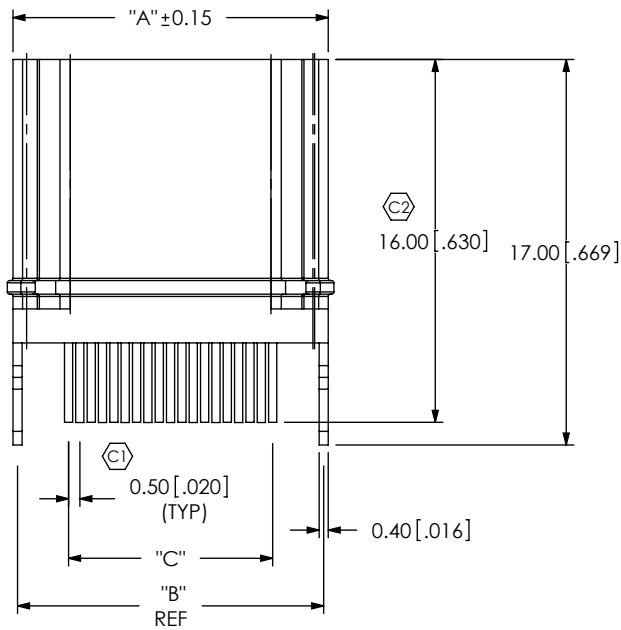
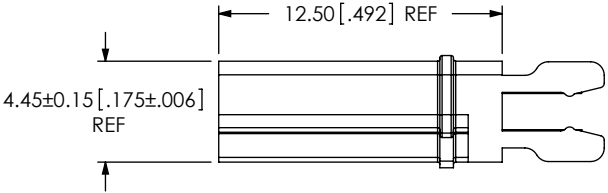
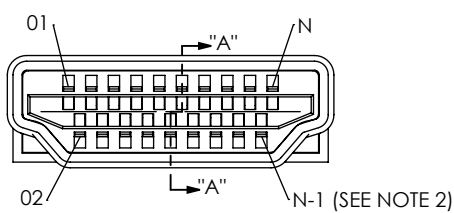
-01

PLATING

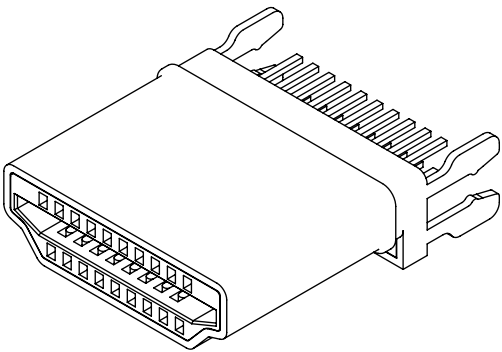
-S: -19 POS, .000030" GOLD ON MATING AREA,  
BRIGHT ACID TIN ON TAIL  
-29 POS, .000030" GOLD ON MATING AREA,  
GOLD FLASH ON SOLDER TAIL

DO NOT  
SCALE FROM  
THIS PRINT

FIG 1  
(HDMP-19-01-S-EM SHOWN)



SECTION "A"-A"



NOTES:

1. Ⓢ REPRESENTS A CRITICAL DIMENSION.
2. PIN "N-1" WILL BE RECESSED AS A LAST MATE FEATURE, AS DESIGNED PER HDMI STANDARDS.
3. HDMP FORMERLY NAMED HDMIP.

TABLE 2		
No OF POSITIONS	N	N-1
-19	19	18
-29	29	28

TABLE 1			
No OF POSITIONS	"A"	"B"	"C"
-19	13.90[.547]	13.50[.531]	9.00[.354]
-29	21.20[.835]	20.80[.819]	14.00[.551]

UNLESS OTHERWISE SPECIFIED,  
DIMENSIONS ARE IN  
MILLIMETERS [INCHES].

TOLERANCES ARE:

DECIMALS ANGLES  
.X: ±0.20[.008] 1°  
.XX: ±0.10[.004]

PROPRIETARY NOTE

THIS DOCUMENT CONTAINS INFORMATION  
CONFIDENTIAL AND PROPRIETARY TO  
SAMTEC, INC. AND SHALL NOT BE REPRODUCED  
OR TRANSFERRED TO OTHER DOCUMENTS OR  
DISCLOSED TO OTHERS OR USED FOR ANY  
PURPOSE OTHER THAN THAT WHICH IT WAS  
OBTAINED WITHOUT THE EXPRESSED WRITTEN  
CONSENT OF SAMTEC, INC.

MATERIAL:  
HOUSING: DUPONT LCP UL94V-0  
TERMINAL: COPPER ALLOY  
METAL SHELL: COPPER ALLOY

DO NOT SCALE DRAWING

SHEET SCALE: 3:1

F:\DWG\MISC\MKTG\HDMP-XX-01-S-EM-MKT.SLDDRW

**samtec**

520 PARK EAST BLVD, NEW ALBANY, IN 47150  
PHONE: 812-944-6733 FAX: 812-948-5047  
e-Mail: info@SAMTEC.com code: 55322

DESCRIPTION:

HDMIP EDGE MOUNT PLUG

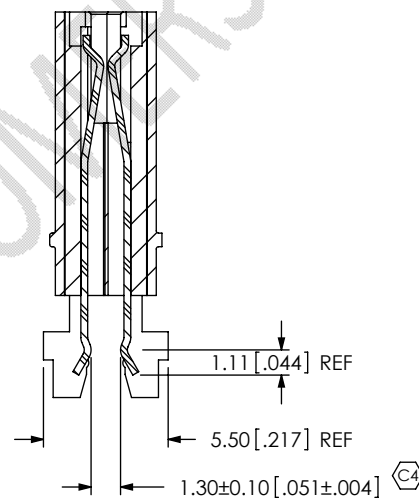
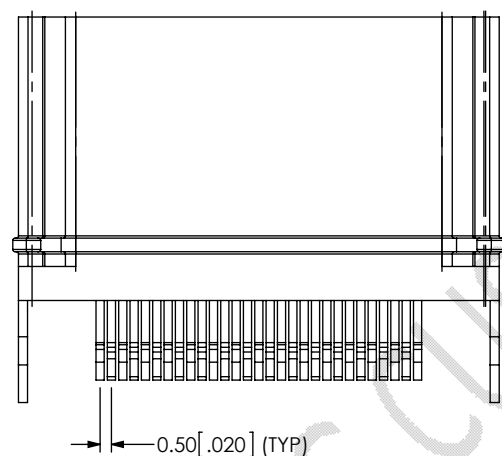
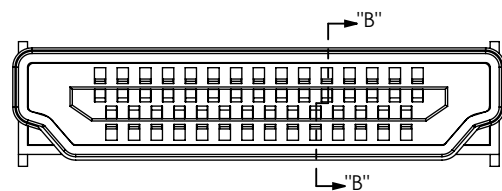
DWG. NO.

HDMP-XX-01-S-EM

BY: J. BORGELT

5/30/06

SHEET 1 OF 2



SECTION "B"-B'

FIG 2  
(HDMP-29-01-S-EM SHOWN)  
(SAME AS FIG 1 EXCEPT AS SHOWN)

PROPRIETARY NOTE

THIS DOCUMENT CONTAINS INFORMATION  
CONFIDENTIAL AND PROPRIETARY TO  
SAMTEC, INC. AND SHALL NOT BE REPRODUCED  
OR TRANSFERRED TO OTHER DOCUMENTS OR  
DISCLOSED TO OTHERS OR USED FOR ANY  
PURPOSE OTHER THAN THAT WHICH IT WAS  
OBTAINED WITHOUT THE EXPRESSED WRITTEN  
CONSENT OF SAMTEC, INC.

DO NOT SCALE DRAWING

SHEET SCALE: 3:1

**samtec**

520 PARK EAST BLVD, NEW ALBANY, IN 47150  
PHONE: 812-944-6733 FAX: 812-948-5047  
e-Mail: info@SAMTEC.com code: 55322

DESCRIPTION:  
HDMP EDGE MOUNT PLUG

DWG. NO.  
HDMP-XX-01-S-EM

BY: J. BORGELT 5/30/06 SHEET 2 OF 2

# Mouser Electronics

Authorized Distributor

Click to View Pricing, Inventory, Delivery & Lifecycle Information:

[Samtec:](#)

[HDMP-19-01-S-EM](#)