

4

3

2

1

THIS DRAWING IS UNPUBLISHED.

RELEASED FOR PUBLICATION

© COPYRIGHT

ALL RIGHTS RESERVED.

LOC

DIST


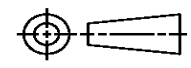
REVISIONS

P	LTR	DESCRIPTION	DATE	DWN	APVD

REPLACED BY OCEAN STYLE APPLICATOR PART NUMBER

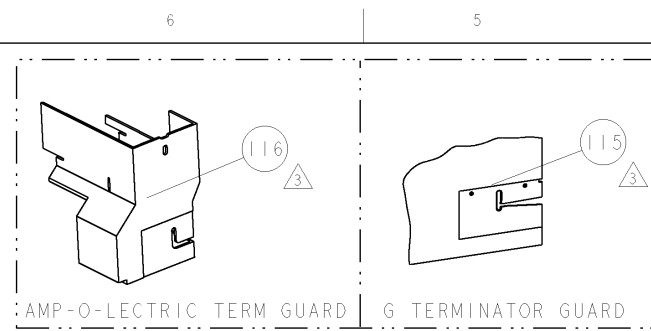
FOR REPLACEMENT PARTS FOR APPLICATOR REFER TO ADDITIONAL PAGE(S). SPARE PARTS KIT (IF LISTED) WILL REMAIN AVAILABLE.

THE REPLACEMENT OCEAN STYLE APPLICATOR HAS THE SAME TERMINATOR/PRESS INTERFACE AS APPLICATOR

THIS DRAWING IS A CONTROLLED DOCUMENT.		DWN	 TE Connectivity		
DIMENSIONS:		CHK			
TOLERANCES UNLESS OTHERWISE SPECIFIED:		APVD	NAME		
 0 PLC ± 1 PLC ± 2 PLC ± 3 PLC ± 4 PLC ± ANGLES ±		PRODUCT SPEC	RESTRICTED TO		
		APPLICATION SPEC	SIZE	CAGE CODE	DRAWING NO
MATERIAL	FINISH	WEIGHT	A3	C-	
		SCALE	SHEET	OF	REV

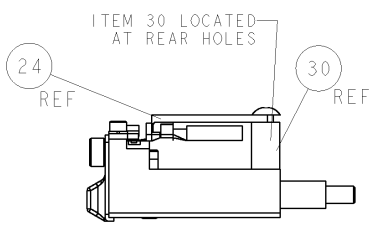
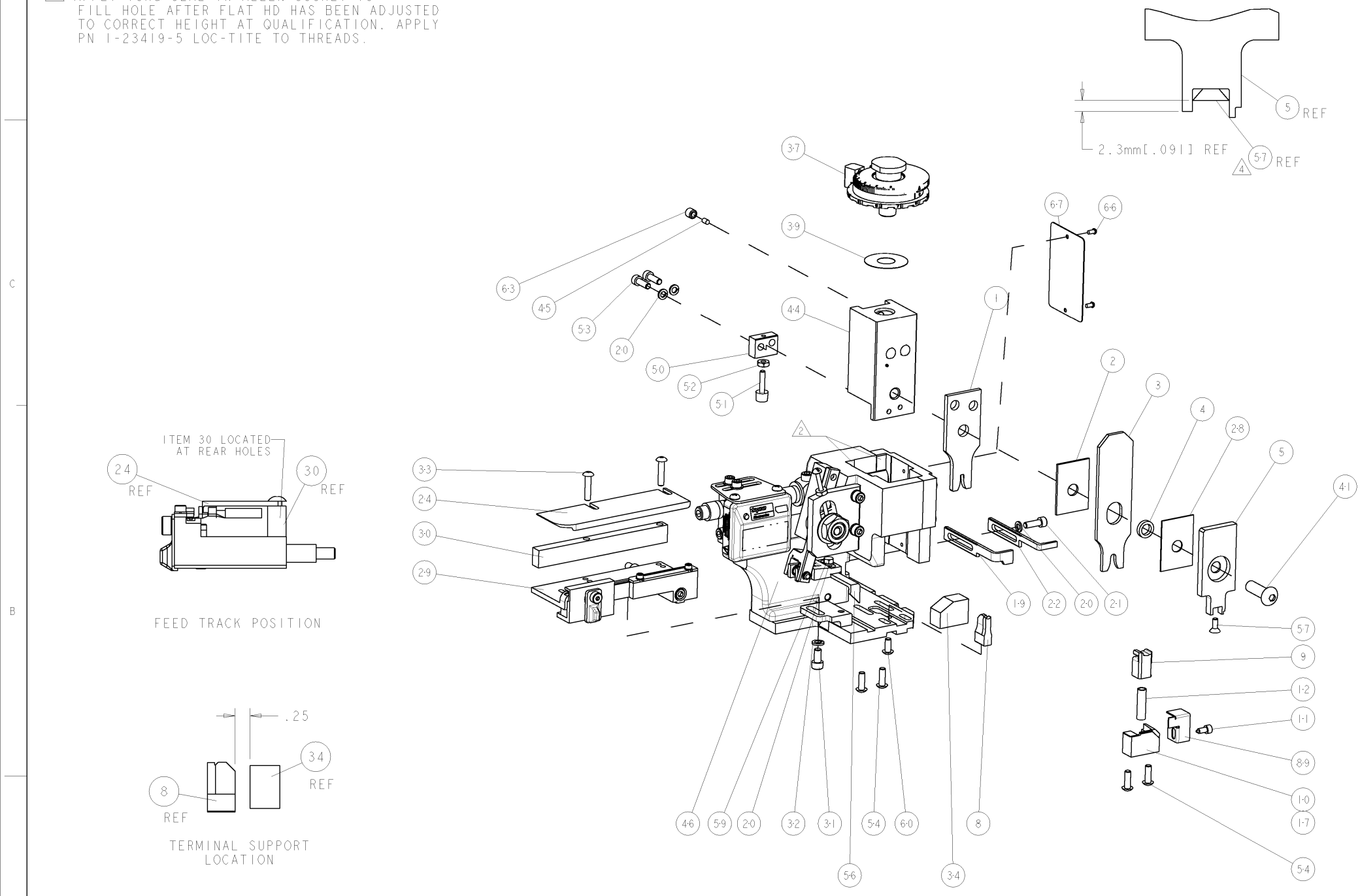
PART NUMBER	REV	FIRST USED	POWER UNIT	FEED TYPE	DESCRIPTION
1855074-1	A	122500-1	LEADMAKER	POST FEED	CUTS CARRIER
1855074-2	A	565435-5	BENCH MODEL K	PRE FEED	CUTS CARRIER
1855074-3	A	354500-1	BENCH MODEL G	PRE FEED	CUTS CARRIER
1855074-6	A	122500-1	LEADMAKER	POST FEED	CONTINUOUS CARRIER
7-1855074-7	A	-	-	-	SPARE PARTS

- ① RECOMMENDED SPARE PARTS
- ② GREASE LIGHTLY
- ③ GUARD MUST BE IN PLACE WHEN OPERATING APPLICATOR IN A BENCH MACHINE
- ④ APPLY TORQ-SEAL IN ALLEN SOCKET TO FILL HOLE AFTER FLAT HD HAS BEEN ADJUSTED TO CORRECT HEIGHT AT QUALIFICATION. APPLY PN 1-23419-5 LOC-TITE TO THREADS.

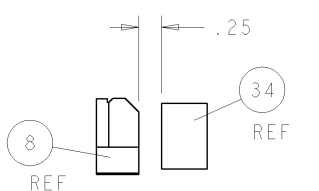


TERMINAL NAME: 2.8 x 0.8mm TAB				
962916	-	AMP TERMINAL - AMP CRIMP SPECS		
-	-	REF SETTING	CRIMP HEIGHT	WIRE SIZE
-	-	B6	1.88±0.05mm [.074±.002]	2.50mm2
-	-	C7	1.73±0.05mm [.068±.002]	2.00mm2
-	-	D7	1.58±0.05mm [.062±.002]	1.50mm2
-	-	-	-	-
SEAL PN.	-	CRIMP	SIZE	TYPE
828905-1	-	WIRE	2.54mm [.100]	F
-	-	INSUL	4.32mm [.170]	O
-	-	-	-	∅ 3.40mm MAX
WIRE STRIP LENGTH	TERM APPL SPEC	FEED	APPL INSTRUCTIONS	SET UP GAGE
4.67-5.31	114-18051	14.50	408-8040	458637-1

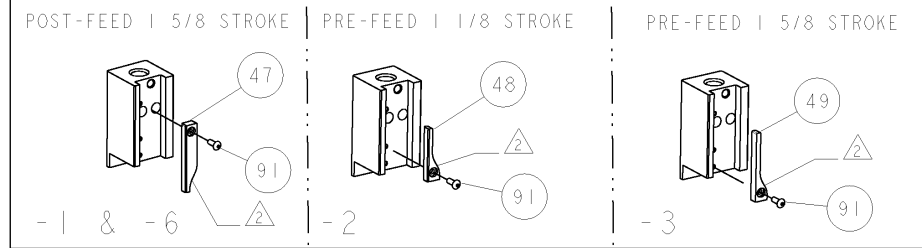
LOC	DIST	REVISIONS			
A	66	REV	DESCRIPTION	DATE	BY
		A	RELEASED	28APR2006	ROW



FEED TRACK POSITION



TERMINAL SUPPORT LOCATION



*** WARNING:**
ON INSTALLATION, SET WIRE DISC TO LARGEST WIRE SIZE SETTING. USE OF SETTINGS BELOW MIN REQUIRED CRIMP HEIGHT SETTING WILL CAUSE DAMAGE TO CRIMP TOOLING.

③	-	-	REF	-	455749-1	GUARD WINDOW	116
③	-	REF	-	-	679532-1	INSERT, GUARD	115
-	-	1	1	1	1-21002-7	SCR, BTN SKT HD CAP 6-32 X .375	91
-	-	1	1	1	318563-1	GUARD, FRONT CHIP	89
-	-	1	1	1	4088040	SF APPL INST 408-8040	72
-	-	1	1	1	217238-1	GENERAL INSTRUCTION PKG	71
-	-	1	1	1	461264-5	PLATE, IDENTIFICATION	67
-	-	2	2	2	21017-2	SCREW, DRIVE	66
-	-	1	1	1	21009-2	SCR, SET, SELF LOCKING 1/4-20 X .250	63
-	-	1	1	1	22733-8	SCR, BHSC, SELF-LOCKING, 8-32 X .375	60
-	-	1	1	1	2-22603-0	SCR, HEX HD CAP 8-32 X .312	59
④	-	1	1	1	1-21003-9	SCR, FLT SKT HD CAP 6-32 X .375	57
-	-	1	1	1	458537-2	PAWL, FEED	56
-	-	4	4	4	2-21002-2	SCR, BTN SKT HD CAP 8-32 X .500	54
-	-	2	2	2	2-21000-7	SCR, SKT HD CAP 8-32 X .500	53
-	-	1	1	1	21018-5	NUT, HEX, REG 6-32	52
-	-	1	1	1	811242-2	BUMPER, HOLD DOWN	51
-	-	1	1	1	690753-1	SPACER, TONKER	50
-	-	1	1	1	690602-6	CAM, PRE FEED, 1 5/8	49
-	-	1	1	1	690602-5	CAM, PRE FEED, 1 1/8	48
-	-	1	1	1	690501-4	CAM, POST FEED, 1 5/8	47
-	-	1	1	1	459456-1	APPL, BASIC SUB ASSY (SIDE WISE MOCA)	46
-	-	1	1	1	690191-1	PLUG, NYLON	45
-	-	1	1	1	455673-1	RAM, SIDE FEED	44
-	-	1	1	1	7-21002-9	SCR, BTN SKT HD CAP 5/16-24 X 1.00	41
-	-	1	1	1	690125-1	SHIM SUB-ASSY	39
-	-	1	1	1	879103-2	FINE ADJUST HEAD SUBASSY	37
-	-	1	1	1	690786-4	TERMINAL SUPPORT	34
-	-	2	2	2	2-21002-4	SCR, BTN SKT HD CAP 8-32 X .750	33
-	-	1	1	1	21024-5	WASHER, SPRG LOCK, REG NO 10	32
-	-	1	1	1	3-21000-4	SCR, SKT HD CAP 10-32 X .375	31
-	-	1	1	1	1320908-8	SPACER, STRIP GUIDE	30
-	-	1	1	1	1633091-4	ASSEMBLY, STRIP GUIDE	29
-	-	1	1	1	455888-6	SPACER, CRIMPER	28
-	-	1	1	1	1320928-1	PLATE, STRIP GUIDE	24
-	-	1	1	1	690472-2	STRIPPER	22
-	-	1	1	1	2-21000-7	SCR, SKT HD CAP 8-32 X .500	21
-	-	4	4	4	21024-4	WASHER, SPRG LOCK, REG NO 8	20
-	-	1	1	1	691353-1	STRIPPER	19
①	-	1	1	1	679625-2	SHEAR HOLDER, FRONT (NO CUT)	17
-	-	1	1	1	3-22280-3	SPRING, COMPRESSION	12
-	-	1	1	1	1-690461-6	STOP, SHEAR	11
①	-	1	1	1	1-690459-0	SHEAR HOLDER, FRONT	10
①	-	1	1	1	318707-2	FLOATING SHEAR, FRONT	9
①	-	1	1	1	1633111-7	ANVIL, COMBINATION .100	8
-	-	1	1	1	318701-1	DEPRESSOR, SHEAR	5
-	-	1	1	1	3-238011-3	BLOCK, CRIMPER SPACER	4
-	-	1	1	1	8-904741-3	CRIMPER, INSUL O PREMIUM	3
-	-	1	1	1	1-455888-3	SPACER, CRIMPER	2
①	-	1	1	1	456407-5	CRIMPER, WIRE PREMIUM	1

DIMENSIONS:		TOLERANCES UNLESS OTHERWISE SPECIFIED:		MATERIAL:		FINISH:		WEIGHT:		CUSTOMER DRAWING:	
INCHES:	0 PLC	+									
	1 PLC	±									
	2 PLC	±0.01									
	3 PLC	±0.001									
	4 PLC	±0.0001									

Mouser Electronics

Authorized Distributor

Click to View Pricing, Inventory, Delivery & Lifecycle Information:

[TE Connectivity:](#)

[1855074-3](#)