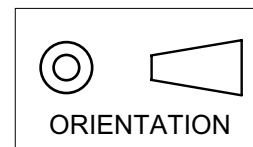
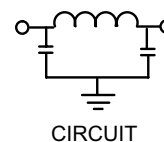
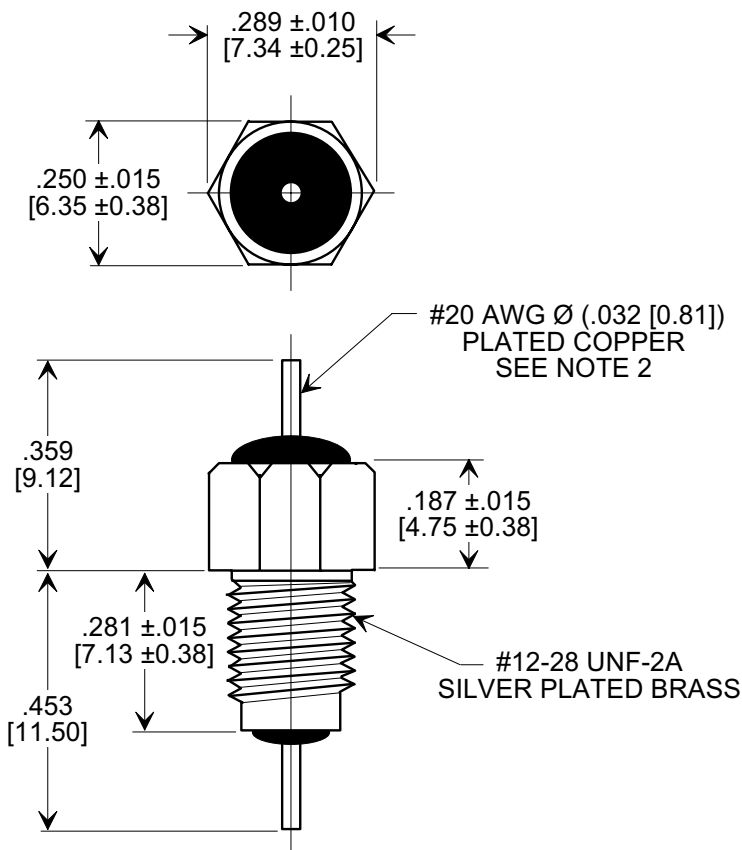


This drawing is the property of Tusonix, Inc., and may not be used, reproduced, published or disclosed to others without expressed authorization by Tusonix Inc.

MARKETING SALES DRAWING
DIMENSIONS IN INCHES - DO NOT SCALE THIS DRAWING
DIMENSIONS IN METRIC - []



Electrical Testing
per Tusonix standard
test plans and Mil-Std-202
Test Methods.



NOTES:

- TUSONIX STANDARD PART NUMBER: 4204-000.
 TUSONIX RoHS COMPLIANT PART NUMBER: 4204-000 LF.
 CUSTOMER MUST SPECIFY STANDARD OR RoHS PART NUMBER WHEN ORDERING.
- LEAD FINISH: STANDARD PART #: 60/40 SOLDER PLATED COPPER.
 RoHS PART #: SILVER PLATED COPPER.
- PART MARKING: TRADEMARK AND VARIATION NUMBER ON HEX FLATS.
 STANDARD PART: BLACK INK. RoHS PART: GREEN INK.
- SUPPLIED WITH SILVER PLATED COPPER ALLOY HEX NUT AND INTERNAL TOOTH LOCK WASHER.

| MIN. CAP. (pF) | WORKING VOLTAGE (WVdc) | | CURRENT IDC (A) | I.R. MIN. @ 100 (VDC) | DWV (VDC) | MINIMUM NO LOAD INSERTION LOSS (dB) AT 25°C PER MIL-STD -220 | | | |
|----------------|------------------------|--------|-----------------|-----------------------|-----------|--|---------|-------|--------|
| | 85°C | 125 °C | | | | 10 MHz | 100 MHz | 1 GHz | 10 GHz |
| 1500 | 350 | 200 | 10 | 10 G Ω | 700 | 5 | 45 | 70 | 70 |
| | | | | | | | | | |

| | | | | |
|--|--|--|--|------------------|
| REVISION RECORD Original Release C.O. 2898 RDN TO COMP FMT & ADDED METRIC. S.M. 04-11-00 20000412-1-01 ADDED NOTES 1-3, IR & DWV. S.M. 02-02-06 20000412-1-01 | TOLERANCES unless otherwise specified 2 PLC. DECIMAL ± // // 3 PLC. DECIMAL ± .031[.079] | | Title BUSHING STYLE EMI FILTER | |
| | ANGLES ± // // | | Drawn S.M. 04-11-00 | Scale 3 X |
| | TUSONIX TUCSON, ARIZONA | | Approved B.M. 04-11-00 | |
| | A | | 4204-000 | |

X-2015 Rev-0

Mouser Electronics

Authorized Distributor

Click to View Pricing, Inventory, Delivery & Lifecycle Information:

[Tusonix:](#)

[4204-000LF](#)